



**PREMIER
PROPERTIES**
COMMERCIAL
REAL ESTATE

FOR LEASE

299 CALIFORNIA AVE

Palo Alto, CA

Suite 100: ±1,350 Sq. Ft.

Suite 101: ±851 Sq. Ft.

Suite 120: ±1,565 Sq. Ft.



BRAD EHIKIAN

Partner

dre license #01736391

☎ | 650.618.3001

✉ | brad.ehikian@prprop.com

JON GOLDMAN

Partner

dre license #01295503

☎ | 650.618.3003

✉ | jon.goldman@prprop.com

JESSE EBNER

Vice President

dre license #02055989

☎ | 650.618.3017

✉ | jesse.ebner@prprop.com

PROPERTY DESCRIPTION

- ▶ Prime Location in California Ave Business District
- ▶ High-Visibility Building on the Corner of California Ave and Birch Street
- ▶ Popular Wine Bar and Hair Salon In-Building
- ▶ Two (2) Blocks from Caltrain Station
- ▶ Surrounded by Restaurants, Amenities, & Abundant Public Parking
- ▶ Easy Access to Oregon Expy, El Camino, U.S. 101, & I-280

Suite 100: ±1,350 Sq. Ft.

- ▶ High-Visibility Fitness / Retail / Personal Services Location
- ▶ Floor-to-Ceiling Glass Street Frontage
- ▶ Excellent Signage Opportunities
- ▶ Great Natural Light
- ▶ Hardwood Floors
- ▶ In-Suite Restroom

Suite 101 - 120: ±2,416 Sq. Ft.

- ▶ ±2,416 Sq. Ft. - Divisible to ±851 Sq. Ft. & ±1,565 Sq. Ft.
- ▶ Interior Suites Ideal for Personal Services, Salon, Tutoring, Massage, Fitness, Retail
- ▶ Immediate Access to Space From Atrium & Lobby Entrance
- ▶ Atrium Provides Natural Light

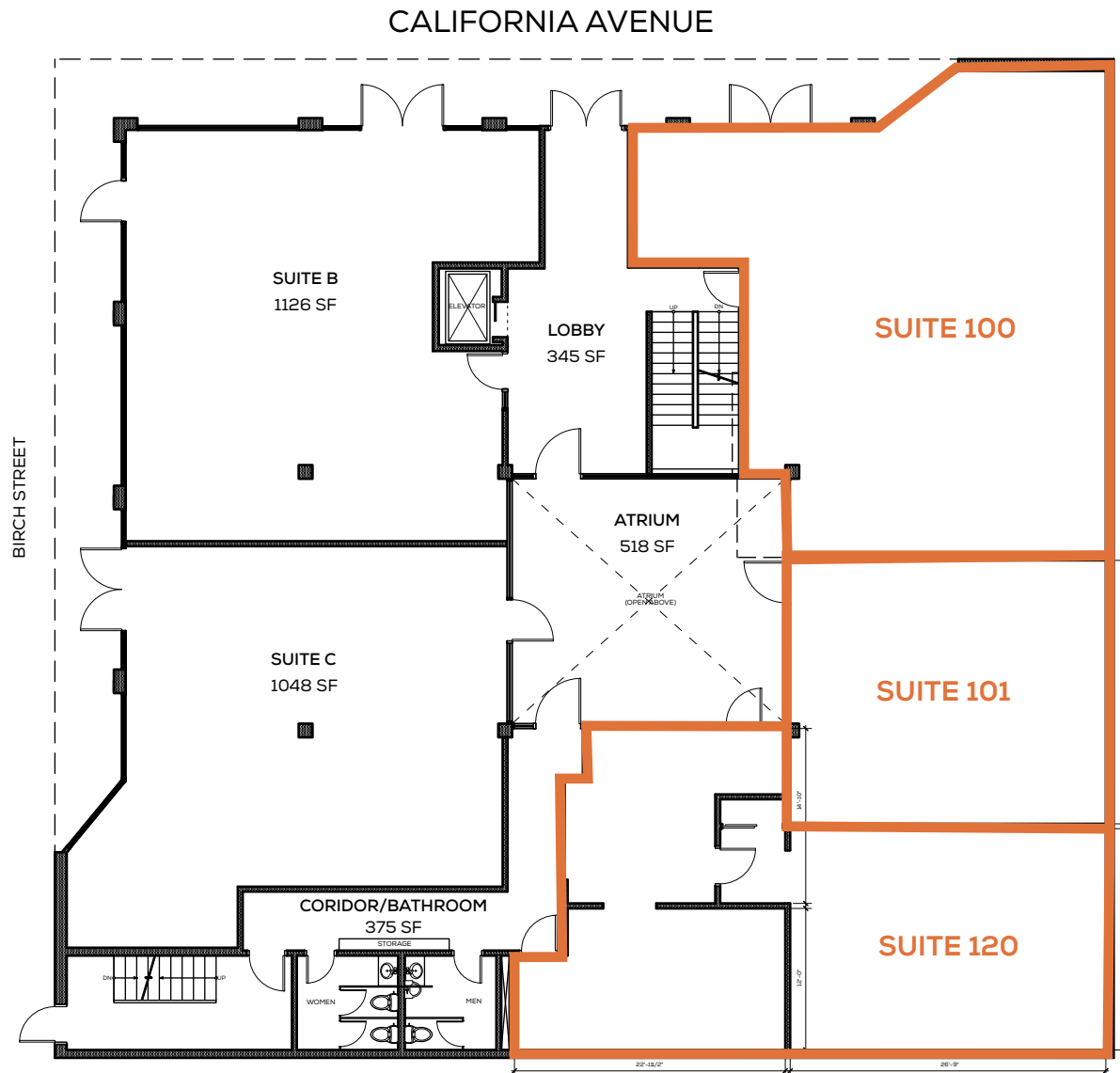


BRAD EHIKIAN
Partner
dre license #01736391
☎ | 650.618.3001
✉ | brad.ehikian@prprop.com

JON GOLDMAN
Partner
dre license #01295503
☎ | 650.618.3003
✉ | jon.goldman@prprop.com

JESSE EBNER
Vice President
dre license #02055989
☎ | 650.618.3017
✉ | jesse.ebner@prprop.com

FLOOR PLAN



BRAD EHIKIAN
Partner
dre license #01736391
☎ | 650.618.3001
✉ | brad.ehikian@prprop.com

JON GOLDMAN
Partner
dre license #01295503
☎ | 650.618.3003
✉ | jon.goldman@prprop.com

JESSE EBNER
Vice President
dre license #02055989
☎ | 650.618.3017
✉ | jesse.ebner@prprop.com

TRANSPORTATION AERIAL



SLAC National Accelerator Laboratory

Stanford University

Stanford Medical Center

Downtown Redwood City

San Francisco Int. Airport

Downtown Palo Alto

Stanford Shopping Center

Caltrain
Palo Alto CalTrain Station

Caltrain Rail Line

299 California Avenue

California Business District

Caltrain
California Avenue Station

✈ PLANES **🚆 TRAINS**

SJC - 16 miles San Francisco - 1 h 11 min
SFO - 22 miles Milbrae - 41 min
OAK - 30 miles San Jose - 25 min

🚗 AUTOMOBILES

San Francisco - 35 miles
Downtown San Jose - 22 miles
Downtown Oakland - 36 miles



Sand Hill Rd (31,468 VPD)

El Camino Real (46,000 VPD)

Page Mill Rd (24,737 VPD)

Stanford Research Park

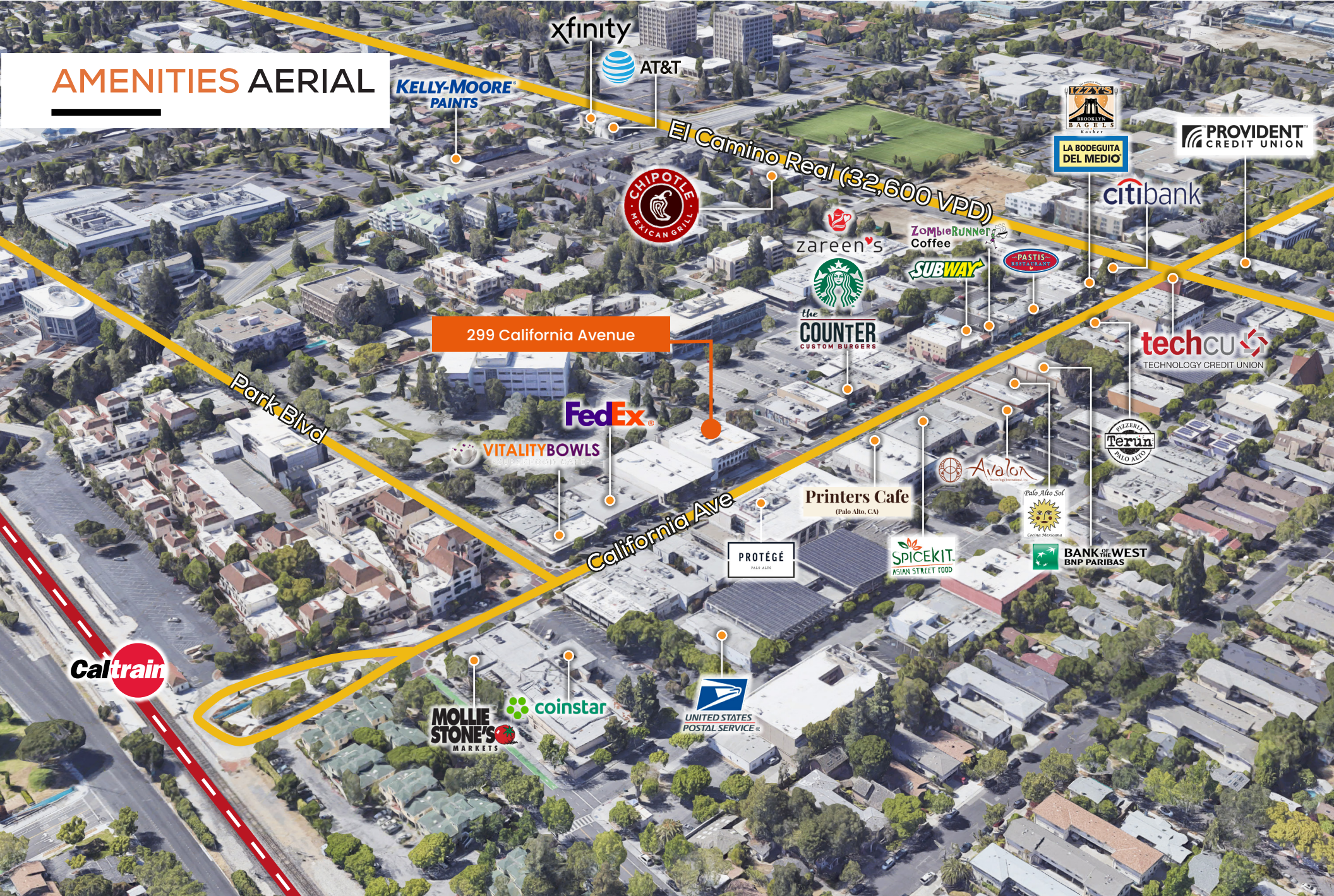


BRAD EHIKIAN
Partner
dre license #01736391
📞 | 650.618.3001
✉ | brad.ehikian@prprop.com

JON GOLDMAN
Partner
dre license #01295503
📞 | 650.618.3003
✉ | jon.goldman@prprop.com

JESSE EBNER
Vice President
dre license #02055989
📞 | 650.618.3017
✉ | jesse.ebner@prprop.com

AMENITIES AERIAL



KELLY-MOORE
PAINTS

xfinity

AT&T

El Camino Real (32,600 VPD)

LA BODEGUITA
DEL MEDIO

PROVIDENT
CREDIT UNION

CHIPOTLE
MEXICAN GRILL

zareen's

ZombieRunner
Coffee

citibank

Starbucks

SUBWAY

PASTIS
RESTAURANT

299 California Avenue

the
COUNTER
CUSTOM BURGERS

techCU
TECHNOLOGY CREDIT UNION

Park Blvd

FedEx

VITALITYBOWLS

the
COUNTER
CUSTOM BURGERS

Terun
PALO ALTO

California Ave

Printers Cafe
(Palo Alto, CA)

Avalon

Palo Alto Sol

PROTÉGÉ
PALO ALTO

SPICEKIT
ASIAN STREET FOOD

BANK OF WEST
BNP PARIBAS

Caltrain

MOLLIE
STONE'S
MARKETS

coinstar

UNITED STATES
POSTAL SERVICE

**PREMIER
PROPERTIES**
COMMERCIAL
REAL ESTATE

BRAD EHIKIAN
Partner
dre license #01736391
☎ | 650.618.3001
✉ | brad.ehikian@prprop.com

JON GOLDMAN
Partner
dre license #01295503
☎ | 650.618.3003
✉ | jon.goldman@prprop.com

JESSE EBNER
Vice President
dre license #02055989
☎ | 650.618.3017
✉ | jesse.ebner@prprop.com

DEMOGRAPHICS



ONE-MILE POPULATION: 22,376

MEDIAN AGE

38.1

MEDIAN NET WORTH



FAMILIES



PER CAPITA
INCOME

\$90,940



Average Household Income

\$225,463

Average Household Size: 2.47

Owner Occupied Housing Units: 4,439

Renter Occupied Housing Units: 4,575

Median Household Income: \$172,488

MAJOR EMPLOYERS:

Data for all businesses in area	1 mile
Total Businesses:	1,437
Total Employees:	16,086
Total Residential Population:	22,376
Employee/Residential Population Ratio (per 100 Residents)	72



BRAD EHIKIAN
Partner
dre license #01736391
☎ | 650.618.3001
✉ | brad.ehikian@prprop.com

JON GOLDMAN
Partner
dre license #01295503
☎ | 650.618.3003
✉ | jon.goldman@prprop.com

JESSE EBNER
Vice President
dre license #02055989
☎ | 650.618.3017
✉ | jesse.ebner@prprop.com