

591 WEST HAMILTON AVE

CAMPBELL



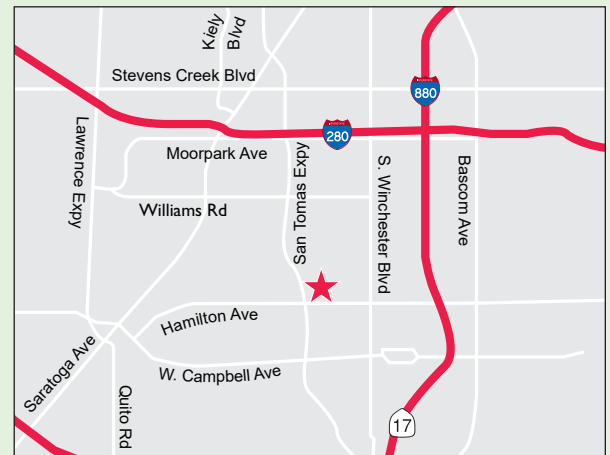
WEST VALLEY CREATIVE HIGH CEILING OFFICE FOR LEASE

1,887 & 4,319 RSF (±6,206 RSF total) Available

First Floor:

- New Modern “Market Ready” TI’s with Open Exposed 12’ High Ceilings Exterior Entrances with Building Facade & Monument Signage Available
- Excellent West Valley Location (at San Tomas Expressway)
- Easy Access to Hwy 17, 280, & 85
- 5 Minute Drive to Pruneyard and Downtown Campbell Amenities
- Comcast and AT&T Fiber Available
- Abundant ±5/1,000 Parking Ratio
- Elevator Served
- Competitive Full Service Lease Rate
- Appointment to Tour

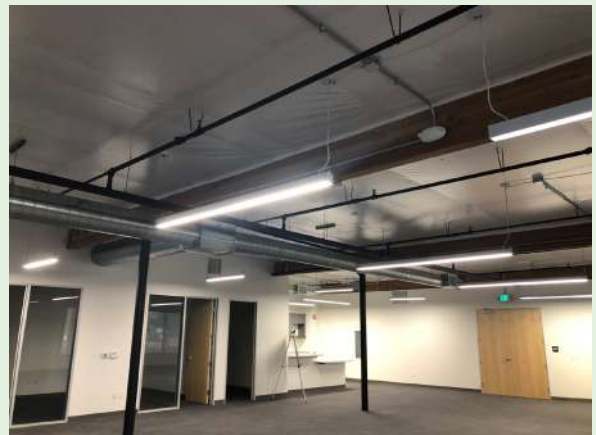
* Floor Plan on Reverse



PATTY STEELE Senior Managing Director 408.982.8463 psteale@ngkf.com CA RE License #00839635

TERRY DEVEAU Senior Managing Director 408.982.8477 tdeveau@ngkf.com CA RE License #00854750

Property Photos



PATTY STEELE Senior Managing Director 408.982.8463 psteale@ngkf.com CA RE License #00839635
TERRY DEVEAU Senior Managing Director 408.982.8477 tdeveau@ngkf.com CA RE License #00854750

Property Photos

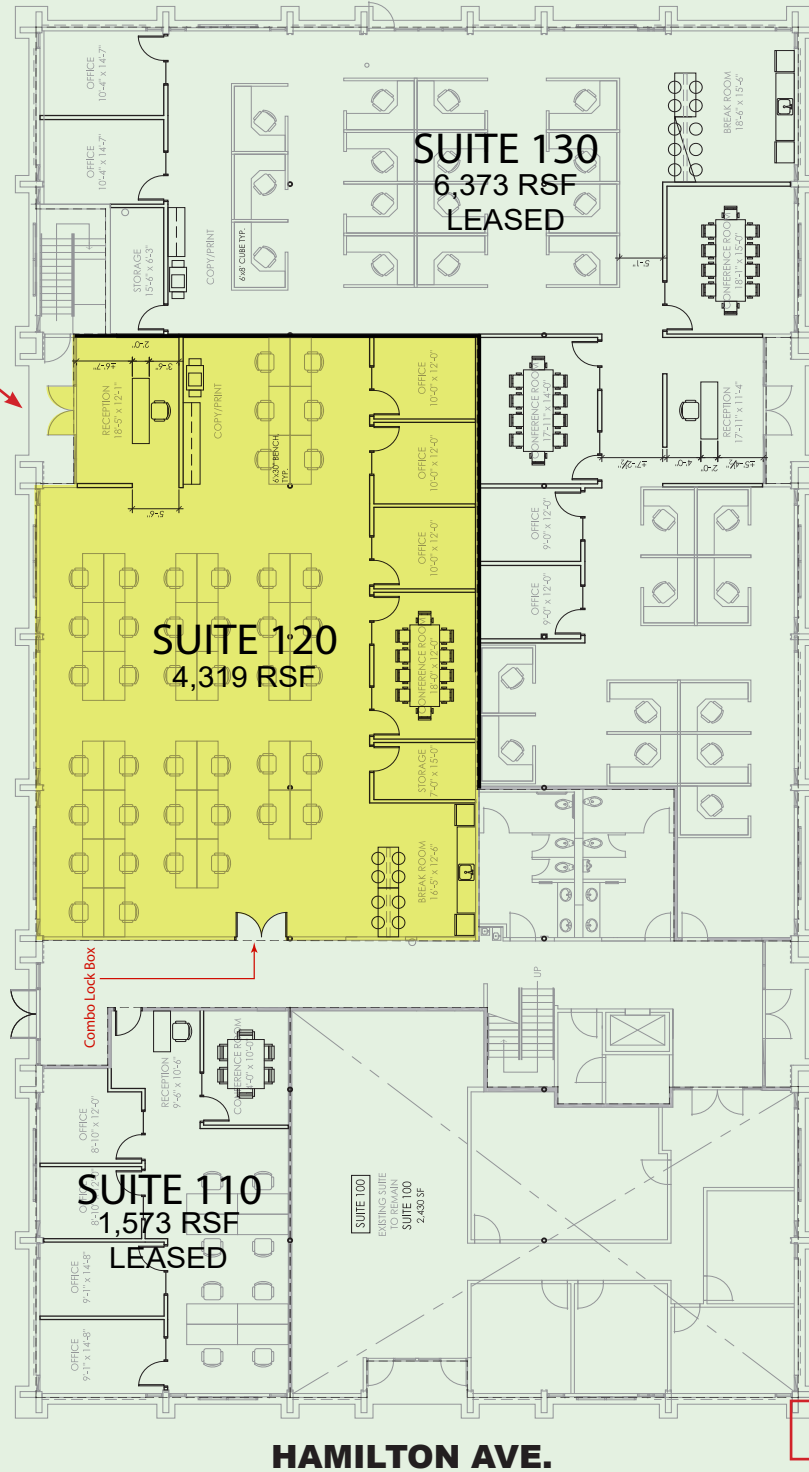


PATTY STEELE Senior Managing Director 408.982.8463 psteale@ngkf.com CA RE License #00839635
TERRY DEVEAU Senior Managing Director 408.982.8477 tdeveau@ngkf.com CA RE License #00854750

1st Floor

Building Facade Signage Here

SAN TOMAS EXPWY.

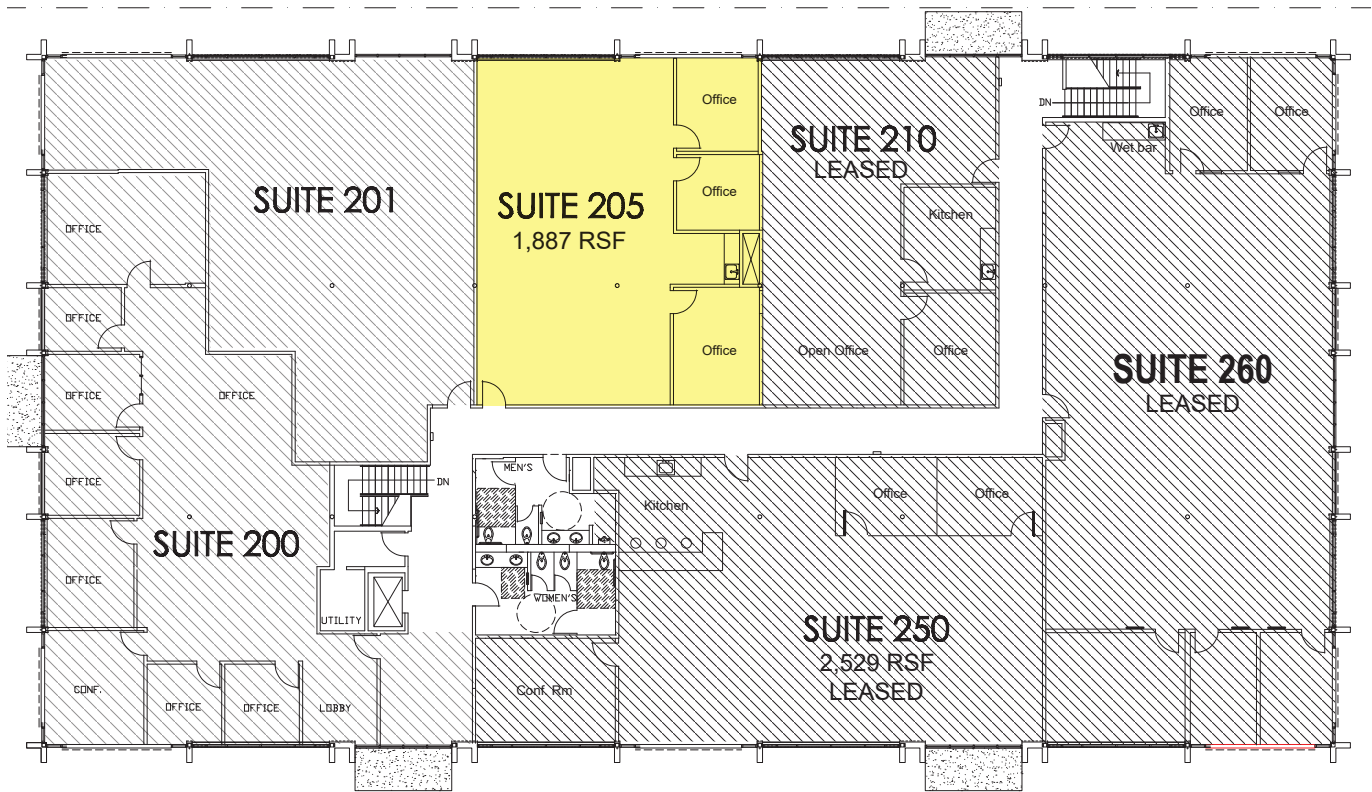


HAMILTON AVE.

Monument Signage Here

PATTY STEELE Senior Managing Director 408.982.8463 psteale@ngkf.com CA RE License #00839635
TERRY DEVEAU Senior Managing Director 408.982.8477 tdeveau@ngkf.com CA RE License #00854750

2nd Floor

**Suite 205: 1,887 RSF**

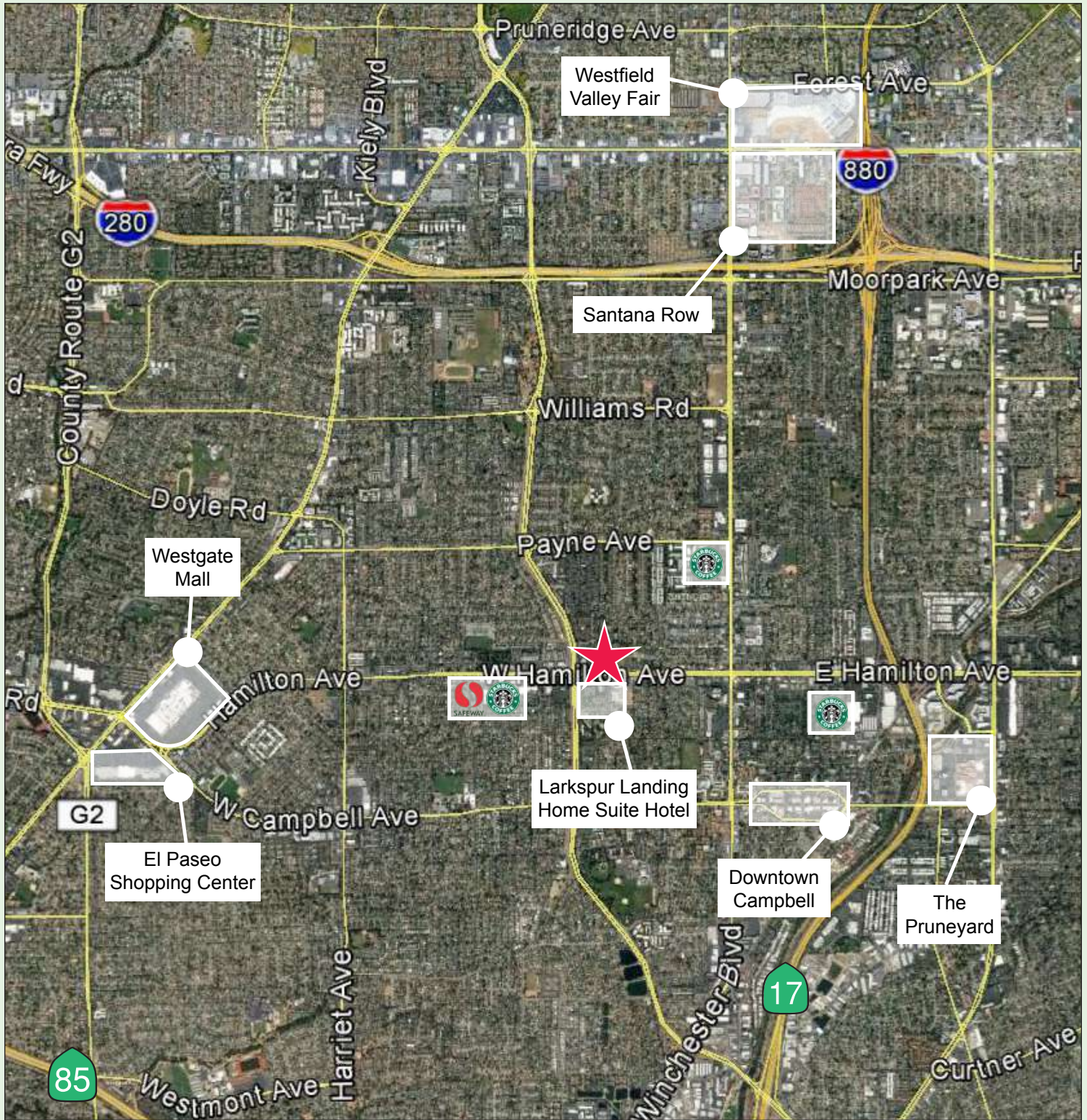
Immediate Occupancy “Market Ready” Space with:

- Two (2) Privates
- Conference Room
- Kitchenette
- Open Area

PATTY STEELE Senior Managing Director 408.982.8463 psteale@ngkf.com CA RE License #00839635

TERRY DEVEAU Senior Managing Director 408.982.8477 tdeveau@ngkf.com CA RE License #00854750

Amenities Map



PATTY STEELE Senior Managing Director 408.982.8463 psteale@ngkf.com CA RE License #00839635
TERRY DEVEAU Senior Managing Director 408.982.8477 tdeveau@ngkf.com CA RE License #00854750