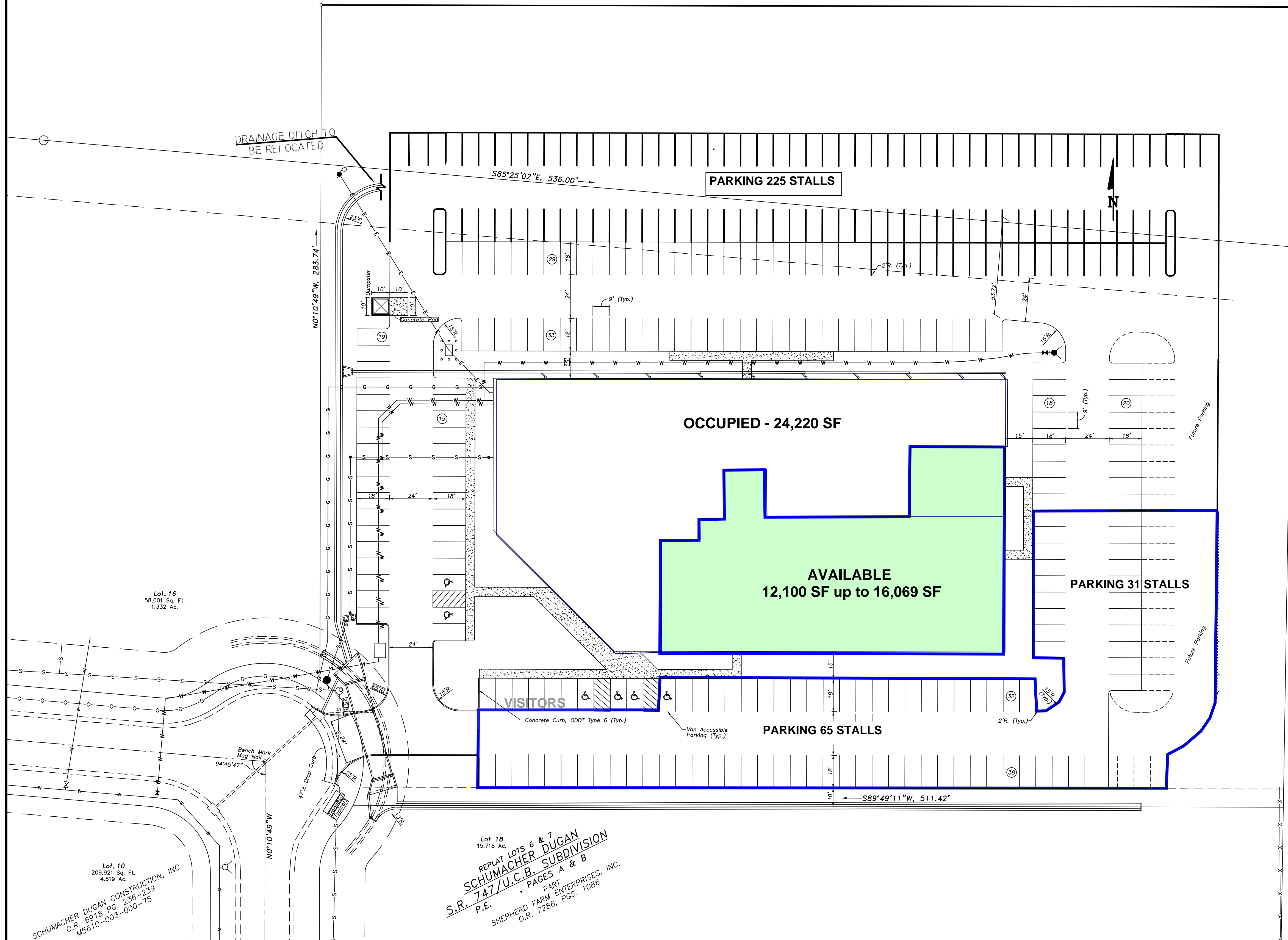


Notes:

**8488 SHEPHERD FARM - TENANT PARKING**



BOARD OF TRUSTEES UNION TOWNSHIP  
O.R. 0457, P.C. 78-89  
M5610-003-000-013

Project Name:  
**Parking Draft**

Revisions:


Drawn By: **JRB**  
Checked By: \_\_\_\_\_  
Date: **06/08/18**

Sheet Name:

Sheet Number:

Lot 18  
15,718 Ac.  
REPLAT LOTS 6 & 7  
**SCHUMACHER DUGAN**  
S.R. 747/U.C.B. SUBDIVISION  
PAGES A & B  
PART  
SHEPHERD FARM ENTERPRISES, INC.  
O.R. 7286, PGS. 1086

Lot 10  
209,921 Sq. Ft.  
4.819 Ac.  
**SCHUMACHER DUGAN CONSTRUCTION, INC.**  
O.R. 6918 PG. 236-239  
M5610-003-000-75

Lot 16  
58,001 Sq. Ft.  
1.332 Ac.