

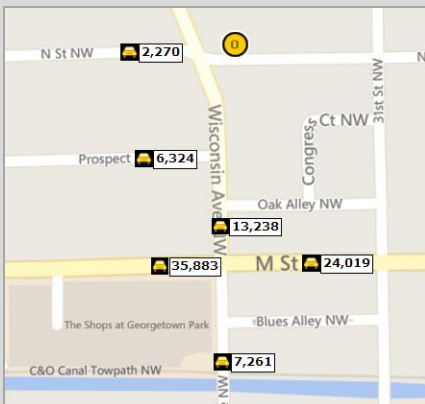
Unique Office/Retail Space 3143 N Street, NW

Available Terms:

- Approximately 1,100 Square feet
- 1st Floor walk up
- C2A zoning
- Term flexible
- Available Immediately

Highlights:

- Efficient space with great light
- Ideal for small office or retail
- On N St. and Wisconsin Ave.
- Exterior enclosed patio (no cost)
- Exterior open patio (no cost)



Fletcher Gill
(202) 735-5382

fletcherpill@thegenaugroup.com

Ashton Kline
(202) 803-2045

ashtonkline@thegenaugroup.com

Adam Collins
(202) 290-1582

adamcollins@thegenugroup.com

Collin Brown
(202) 450-3701

collinbrown@thegenaugroup.com

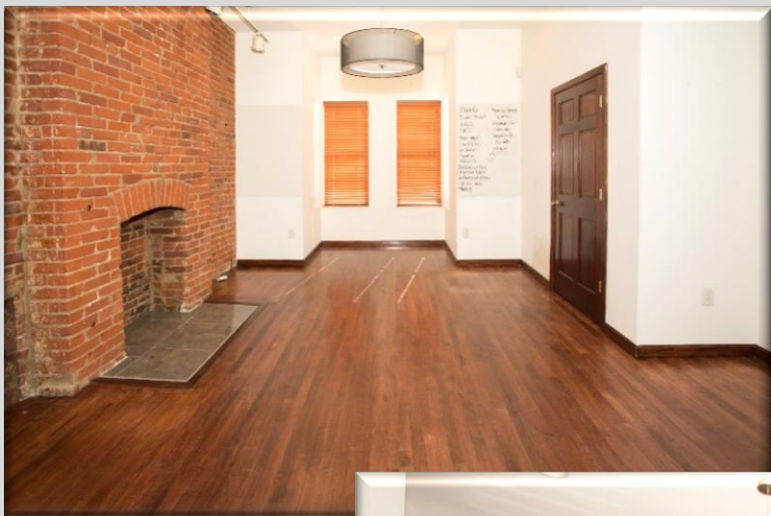
Juda Penini
(202) 803-2044

judapanini@thegenaugroup.com

All information contained herein was obtained from sources we deem to be reliable. However, we have not verified its accuracy, and make no warranties thereof. It is submitted subject to the possibility of errors and omissions, as well as prior leasing and change of price. Furthermore, it may be withdrawn with or without notice without penalty.

Photo Gallery

3143 N Street, Georgetown



Fletcher Gill
(202) 735-5382

fletcher.gill@thegenaugroup.com

Ashton Kline
(202) 803-2045

ashtonkline@thegenaugroup.com

Adam Collins
(202) 290-1582

adamcollins@thegenugroup.com

Collin Brown
(202) 450-3701

collinbrown@thegenaugroup.com

Juda Penini
(202) 803-2044

judapanini@thegenaugroup.com

Photo Gallery

3143 N Street, Georgetown



Fletcher Gill
(202) 735-5382

fletcher.gill@thegenaugroup.com

Ashton Kline
(202) 803-2045

ashtonkline@thegenaugroup.com

Adam Collins
(202) 290-1582

adamcollins@thegenugroup.com

Collin Brown
(202) 450-3701

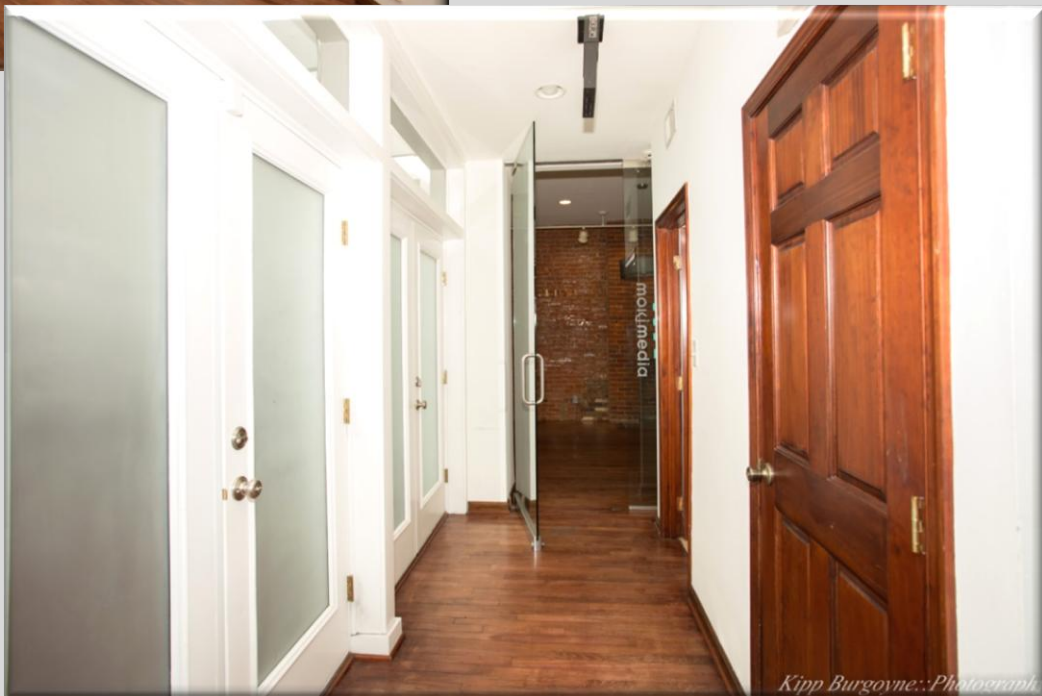
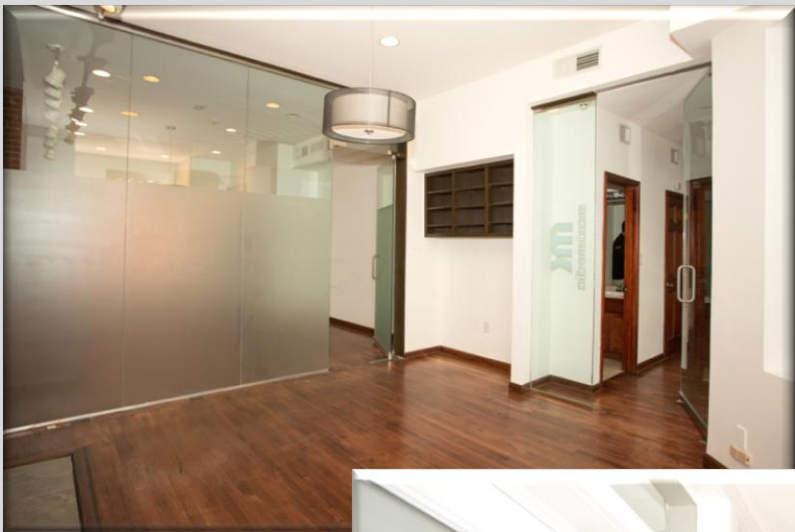
collinbrown@thegenaugroup.com

Juda Penini
(202) 803-2044

judapanini@thegenaugroup.com

Photo Gallery

3143 N Street, Georgetown



Fletcher Gill
(202) 735-5382

fletcher.gill@thegenaugroup.com

Ashton Kline
(202) 803-2045

ashtonkline@thegenaugroup.com

Adam Collins
(202) 290-1582

adamcollins@thegenugroup.com

Collin Brown
(202) 450-3701

collinbrown@thegenaugroup.com

Juda Penini
(202) 803-2044

judapanini@thegenaugroup.com

Outdoor Terrace Photo Gallery

3143 N Street, Georgetown



Fletcher Gill
(202) 735-5382

fletcher.gill@thegenaugroup.com

Ashton Kline
(202) 803-2045

ashton.kline@thegenaugroup.com

Adam Collins
(202) 290-1582

adam.collins@thegenugroup.com

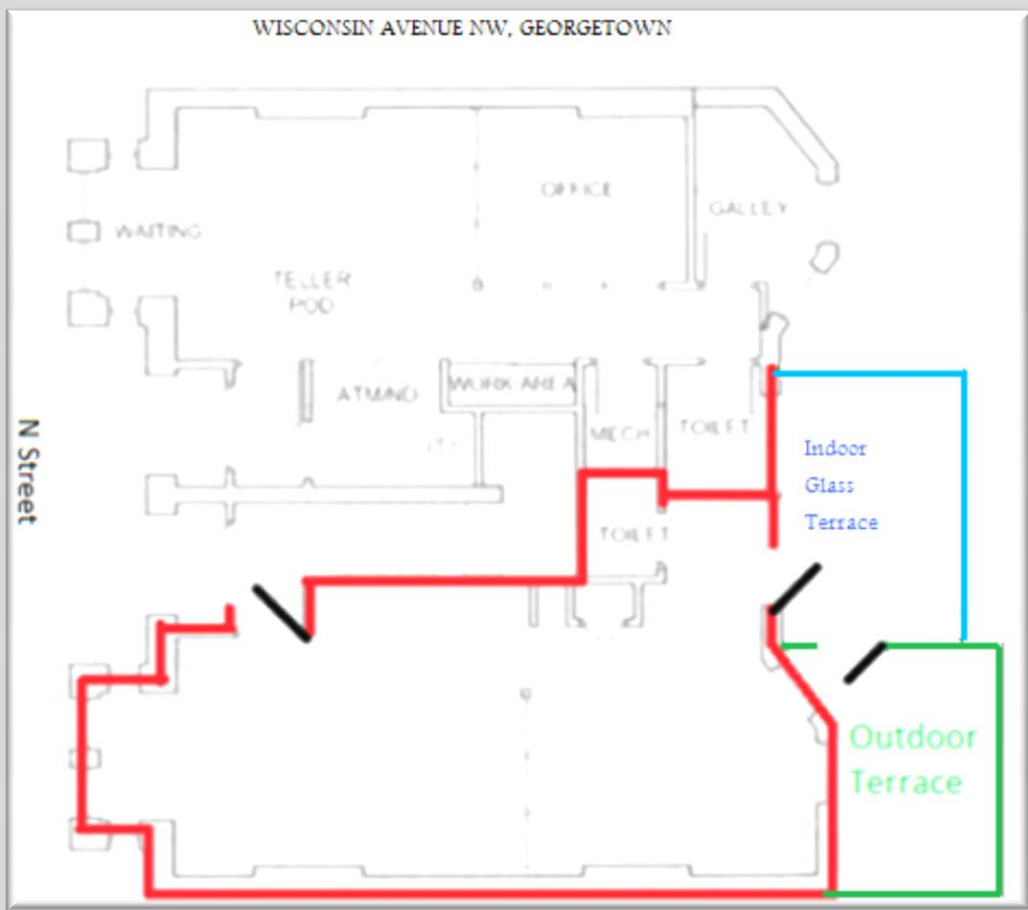
Collin Brown
(202) 450-3701

collin.brown@thegenaugroup.com

Juda Penini
(202) 803-2044

[judapanini@thegenaugroup.com](mailto:juda.penini@thegenaugroup.com)

Floor Plan 3143 N Street



Fletcher Gill
(202) 735-5382

fletcher.gill@thegenaugroup.com

Ashton Kline
(202) 803-2045

ashtonkline@thegenaugroup.com

Adam Collins
(202) 290-1582

adamcollins@thegenugroup.com

Collin Brown
(202) 450-3701

collinbrown@thegenaugroup.com

Juda Penini
(202) 803-2044

judapanini@thegenaugroup.com

Demographic Information

3143 N Street, Georgetown

Population	1 Mile	3 Mile	5 Mile
2015 Total Population:	39,470	335,604	753,303
2020 Population:	43,040	370,526	832,389
Pop Growth 2015-2020:	9.04%	10.41%	10.50%
Average Age:	33.80	35.40	36.90

Households			
2015 Total Households:	18,094	166,718	349,595
HH Growth 2015-2020:	10.89%	10.98%	10.88%
Median Household Inc:	\$111,728	\$98,344	\$93,986
Avg Household Size:	1.70	1.90	2.00
2015 Avg HH Vehicles:	1.00	1.00	1.00

Fletcher Gill
(202) 735-5382

fletcher.gill@thegenaugroup.com

Ashton Kline
(202) 803-2045

ashton.kline@thegenaugroup.com

Adam Collins
(202) 290-1582

adam.collins@thegenugroup.com

Collin Brown
(202) 450-3701

collin.brown@thegenaugroup.com

Juda Penini
(202) 803-2044

[judapanini@thegenaugroup.com](mailto:juda.penini@thegenaugroup.com)