



SUNRISE PLAZA

634 Blossom Hill Rd.
San Jose, California

25,000± SF ANCHOR SPACE AVAILABLE FOR LEASE



PROPERTY INFORMATION:



- 25,090± SF Anchor Space Available
- Adjacent to Main Entrance Into The Center
- Traffic Count: 32,000+ ADT
- Co-Anchored by Dick's Sporting Goods and Chavez Market
- Co-Tenants Include: Outback Steakhouse, Sally Beauty, KFC, Marie Callender's, Verizon Wireless, Juicy Burgers & Subway
- Contact Agent for Pricing Information

ESTIMATED DEMOGRAPHICS:

	<u>1 MILE</u>	<u>3 MILES</u>	<u>5 MILES</u>
POPULATION:	23,466	222,981	435,882
AVG. HH INCOME:	\$119,657	\$129,921	\$157,805

FOR FURTHER INFORMATION CONTACT:

MEACHAM/OPPENHEIMER, INC.
CORFAC INTERNATIONAL
8 No. San Pedro St., Suite 300
San Jose, California 95110
Tel: 408.378.5900
Fax: 408.378.5903
www.moinc.net

David Taxin
Lic. #00983163
dtaxin@moinc.net
(408) 477-2508 Direct
(408) 378-5900

SUNRISE PLAZA • 634 BLOSSOM HILL ROAD • SAN JOSE, CALIFORNIA



MEACHAM/OPPENHEIMER, INC.
CORFAC INTERNATIONAL
8 No. San Pedro St., Suite 300
San Jose, California 95110
Tel: 408.378.5900
www.moinc.net

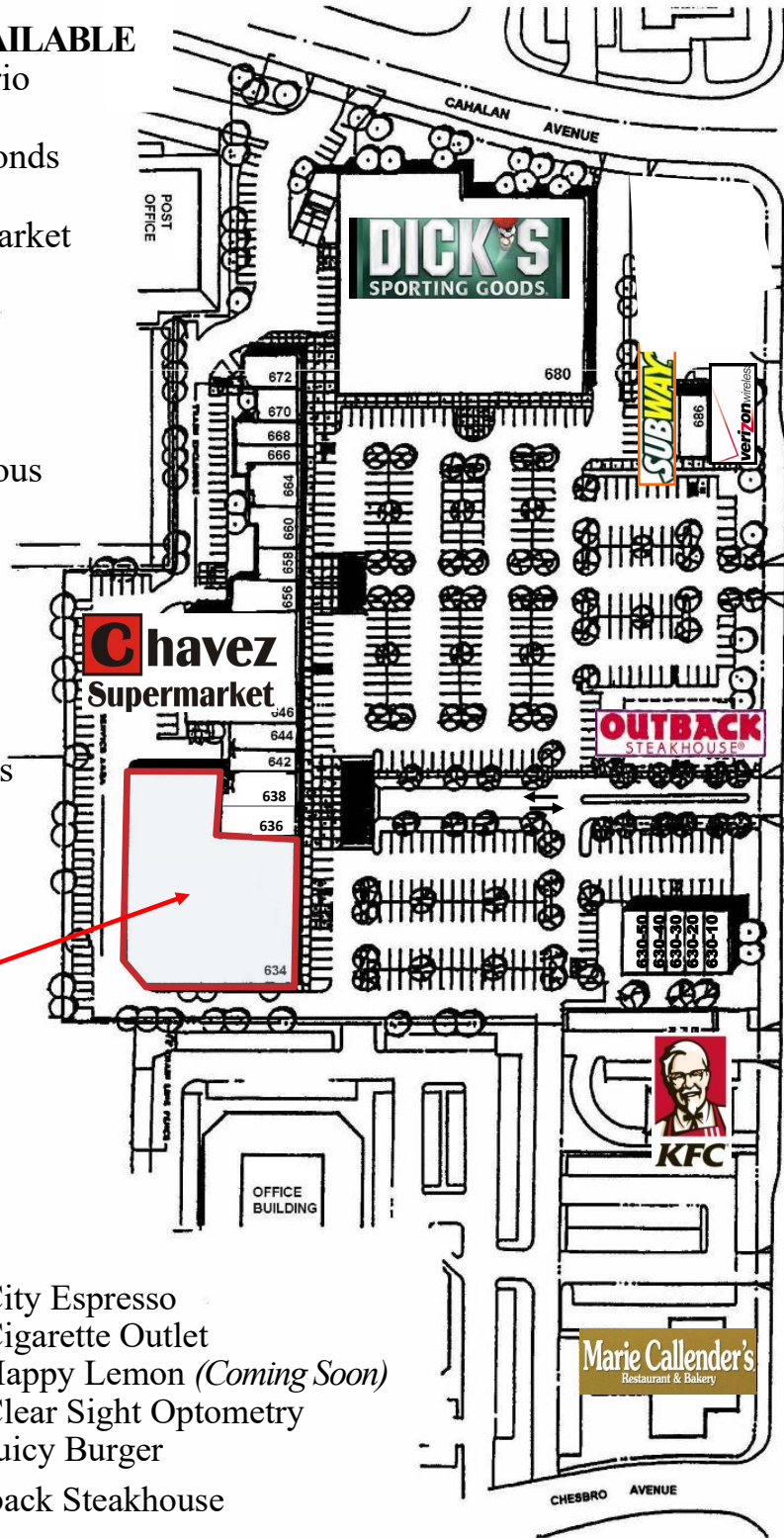
David Taxin
Lic. #00983163
dtaxin@moinc.net
(408) 477-2508 Direct
(408) 378-5900 Main

SUNRISE PLAZA • 634 BLOSSOM HILL ROAD • SAN JOSE, CALIFORNIA

634—25,960± SF AVAILABLE

- 636—Apoyo Financiero
- 638—Express Pizza
- 642—Jewels & Diamonds
- 644—Sally Beauty
- 646—Chavez Supermarket
- 656—
- 658—Fish & Chips
- 660—Beck Shoes
- 664—Shin Sushi
- 666—Elite Nails
- 668—Sweet Rendezvous
- 670—Bookkeeping
- 672—Dentist
- 680—Dick’s Sporting Goods
- 684—Subway
- 686—Chicago Title
- 690—Verizon Wireless

**AVAILABLE
25,090 ± SF**

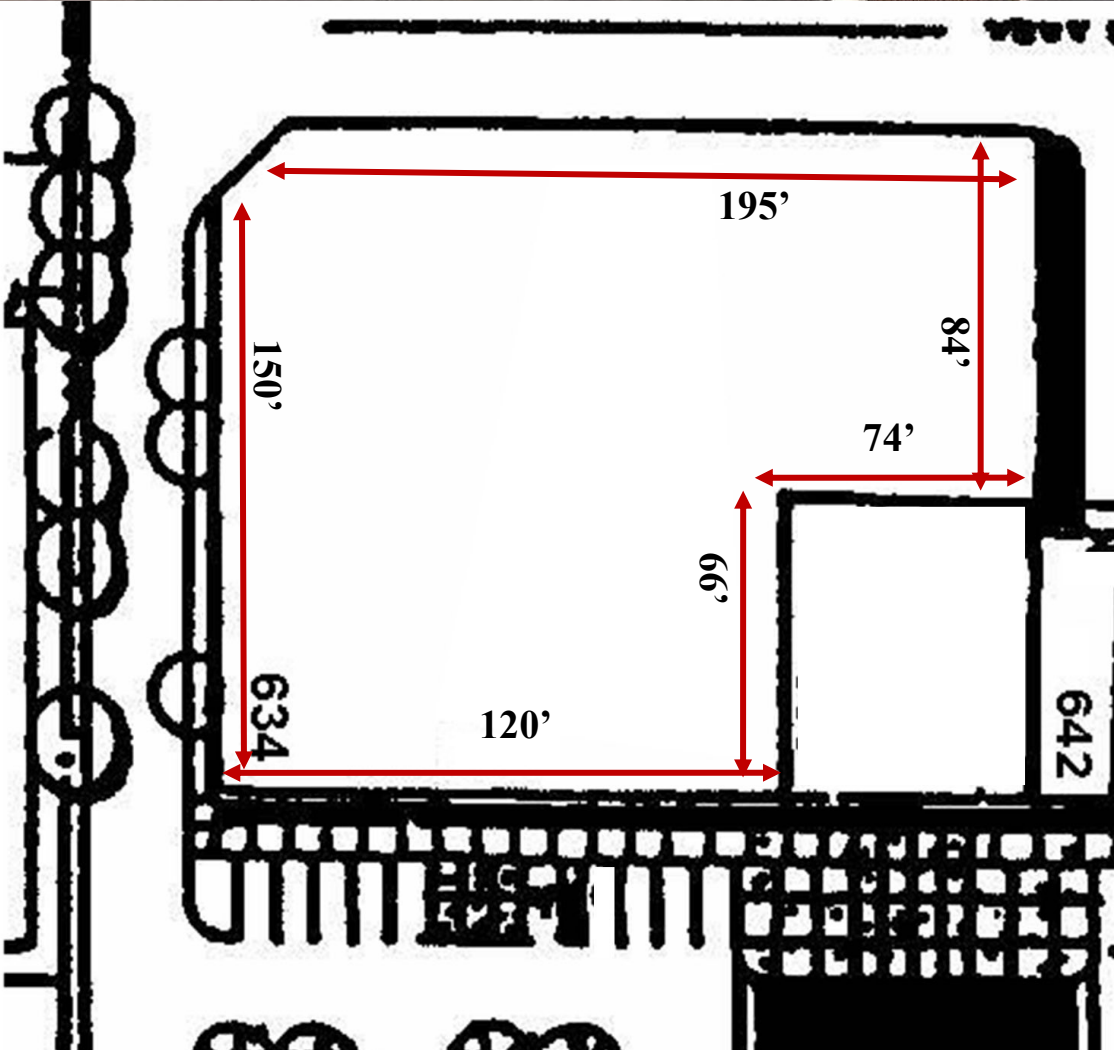


- 630-50—City Espresso
- 630-49—Cigarette Outlet
- 630-30—Happy Lemon (*Coming Soon*)
- 630-20—Clear Sight Optometry
- 630-10—Juicy Burger
- 632—Outback Steakhouse

MEACHAM/OPPENHEIMER, INC.
CORFAC INTERNATIONAL
 8 No. San Pedro St., Suite 300
 San Jose, California 95110
 Tel: 408.378.5900
 www.moinc.net

David Taxin
 Lic. #00983163
dtaxin@moinc.net
(408) 477-2508 Direct
(408) 378-5900 Main

SUNRISE PLAZA • 634 BLOSSOM HILL ROAD • SAN JOSE, CALIFORNIA



Not Exact/Measurements Approximate

MEACHAM/OPPENHEIMER, INC.
CORFAC INTERNATIONAL
8 No. San Pedro St., Suite 300
San Jose, California 95110
Tel: 408.378.5900
www.moinc.net

David Taxin
Lic. #00983163
dtaxin@moinc.net
(408) 477-2508 Direct
(408) 378-5900 Main

The information contained herein has been obtained from sources we deem reliable. We cannot, however, assume responsibility for its accuracy.

SUNRISE PLAZA • 634 BLOSSOM HILL ROAD • SAN JOSE, CALIFORNIA



MEACHAM/OPPENHEIMER, INC.
CORFAC INTERNATIONAL
8 No. San Pedro St., Suite 300
San Jose, California 95110
Tel: 408.378.5900
www.moinc.net

David Taxin
Lic. #00983163
dtaxin@moinc.net
(408) 477-2508 Direct
(408) 378-5900 Main

The information contained herein has been obtained from sources we deem reliable. We cannot, however, assume responsibility for its accuracy.