

For Sale

Vacant Land

±20.6 Acres | \$3,500,000



Map data ©2021 Imagery ©2021, Maxar Technologies, U.S. Geological Survey, USDA Farm Service Agency

4000 Areno Road

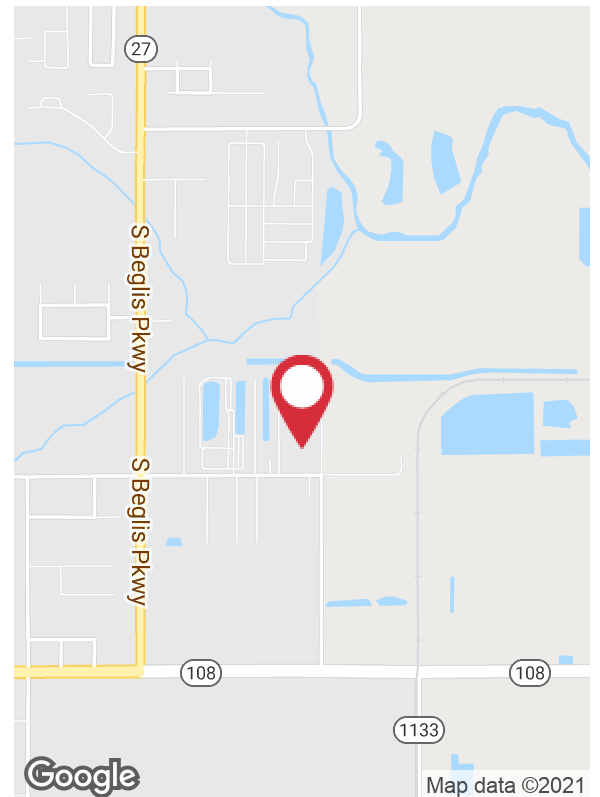
Sulphur, Louisiana 70663

Property Highlights

- ±20 Acres Available For Sale
- Located on Areno and Ravia Roads
- Cleared and Fenced
- 5 Acres of Stabilized Yard
- I1 "Light Industrial" Zoning
- Near Refineries and Petrochemical Companies
- Flood Zone(s) X and AE

Sale Price

\$3,500,000



CALL OR EMAIL FOR MORE INFORMATION

For more information

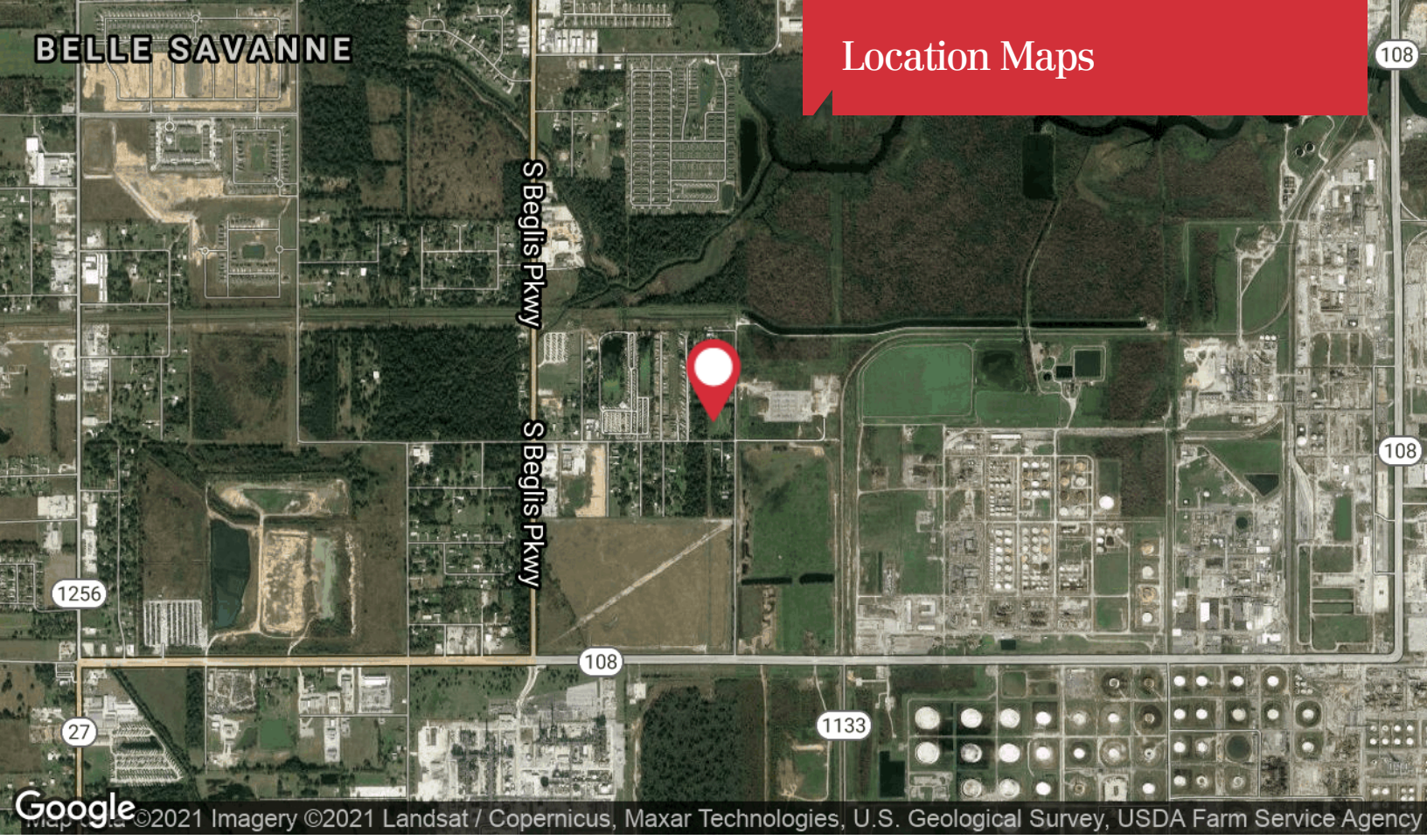
Matt Redd, CCIM, SIOR, CRE

O: 337 310 7333 x206 | C: 337 489 9666
mattredd@reddproperties.com

NO WARRANTY OR REPRESENTATION, EXPRESS OR IMPLIED, IS MADE AS TO THE ACCURACY OF THE INFORMATION CONTAINED HEREIN, AND THE SAME IS SUBMITTED SUBJECT TO ERRORS, OMISSIONS, CHANGE OF PRICE, RENTAL OR OTHER CONDITIONS, PRIOR SALE, LEASE OR FINANCING, OR WITHDRAWAL WITHOUT NOTICE, AND OF ANY SPECIAL LISTING CONDITIONS IMPOSED BY OUR PRINCIPALS NO WARRANTIES OR REPRESENTATIONS ARE MADE AS TO THE CONDITION OF THE PROPERTY OR ANY HAZARDS CONTAINED THEREIN ARE ANY TO BE IMPLIED. LICENSED IN LOUISIANA.

810 W Bayou Pines Drive
Lake Charles, LA 70601
337 310 7333 tel
latterblum.com

June 22, 2021



©2021 Imagery ©2021 Landsat / Copernicus, Maxar Technologies, U.S. Geological Survey, USDA Farm Service Agency



Map data ©2021

810 W Bayou Pines Drive
Lake Charles, LA 70601
337 310 7333 tel
latterblum.com