



GIBBONS WHITE
INCORPORATED



1135 Pearl Street

Boulder, CO



Chris Boston, CCIM, MBA

cboston@gibbonswhite.com
(303) 586-5930

Kegan McNutt

kegan@gibbonswhite.com
(303) 586-5929

www.gibbonswhite.com



[View Map](#)

Pearl Street Office Space For Lease

Available Space	2,000 - 3,260 sq. ft.
Lease Rate / sq. ft.	\$23.95 NNN
Expenses / sq. ft.	\$14.69*

*Includes Utilities & Excludes Janitorial

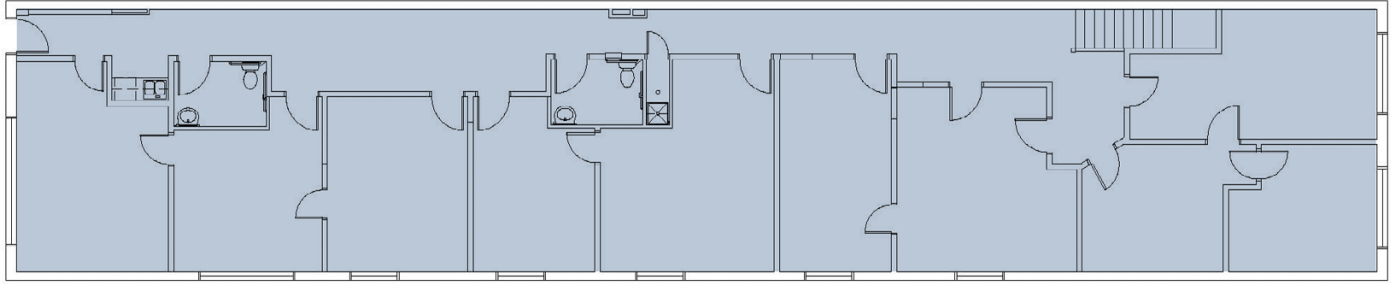
- Year 1 Introductory Rate of \$23.95 NNN & Year 2 Rate of \$28.95 NNN for Any 5+ Year Lease Term
- Flexible Suite Sizes and Configurations Available
- Newly Updated Office Space with Private Offices & Restrooms, Conference Room and Kitchenette
- Many Offices Share an Interior Door - Perfect for Greater Collaboration
- Elegant Finishes Throughout Space
- Prime Pearl Street Location with Proximity to Many Amenities
- 4 City Parking Permits Available
- Access Controlled

The information included has been obtained from sources believed reliable. While we do not doubt the accuracy of the information, it has not been verified and no guarantee, warranty, or representation is being made.

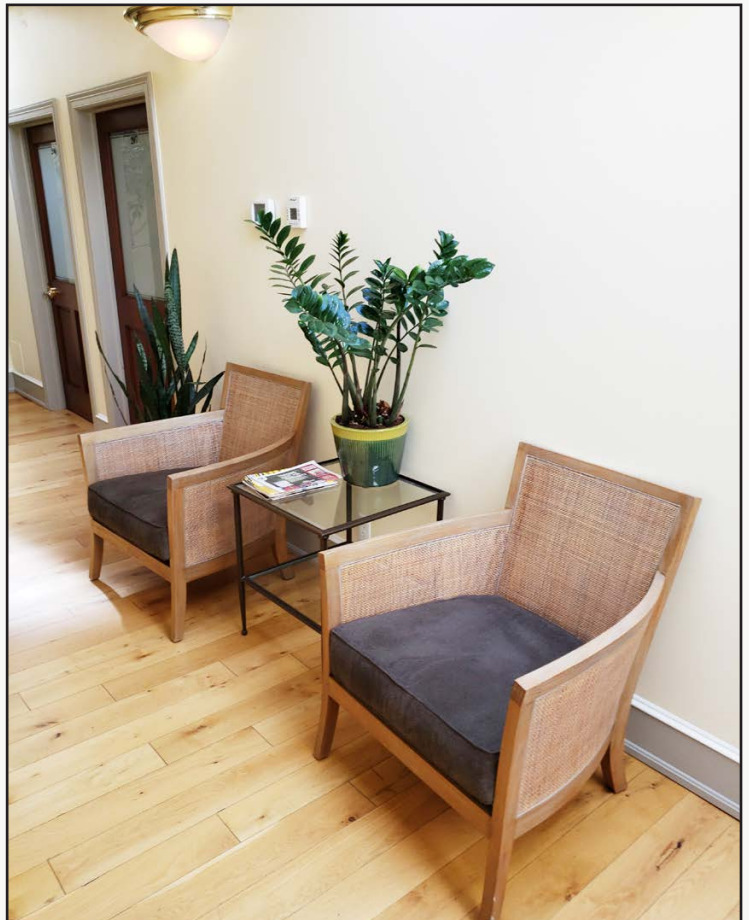


2305 Canyon Blvd, Suite 200, Boulder, CO 80302 - (303) 442-1040

© 2020 Gibbons-White, Inc.



1135 Pearl Street
2,000 sq. ft. - 3,260 sq. ft.



The information included has been obtained from sources believed reliable. While we do not doubt the accuracy of the information, it has not been verified and no guarantee, warranty, or representation is being made.