

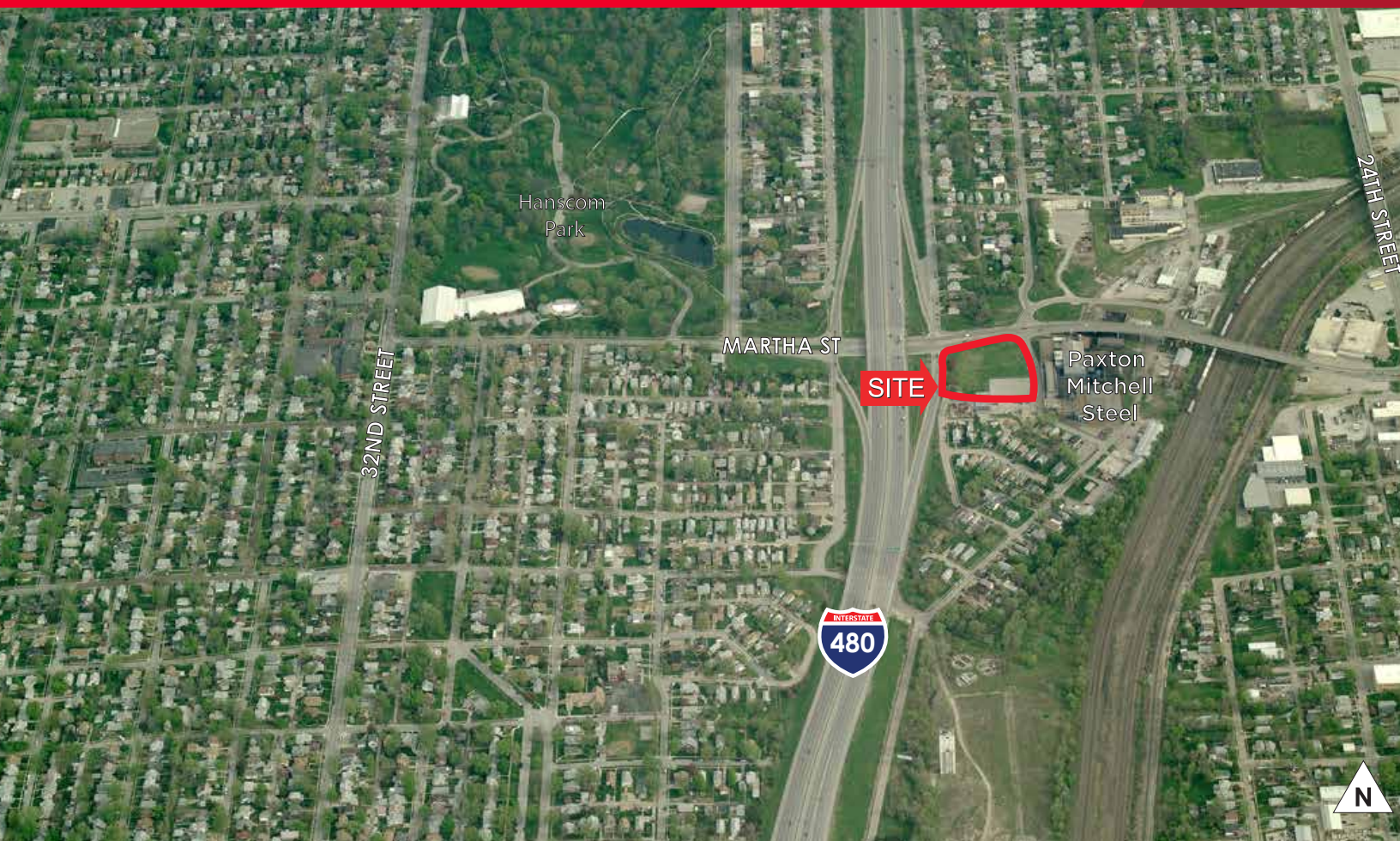


CUSHMAN &
WAKEFIELD

LUND
COMPANY

FOR SALE

2711 Martha Street
Omaha, NE



1.44 Acres of Undeveloped Land

Sale Price: \$375,000

Vacant industrial zoned land immediately off I-480. Located on the southeast corner of Martha Street and I-480.

Michael P. Earl
Principal
(402) 548 4005
mearl@lundco.com

450 Regency Parkway, Suite 200
Omaha, NE 68114
+1 402 393 8811
lundco.com

Independently Owned and Operated / A Member of the Cushman & Wakefield Alliance

Cushman & Wakefield Copyright 2015. No warranty or representation, express or implied, is made to the accuracy or completeness of the information contained herein, and same is submitted subject to errors, omissions, change of price, rental or other conditions, withdrawal without notice, and to any special listing conditions imposed by the property owner(s). As applicable, we make no representation as to the condition of the property (or properties) in question.



Availability

Sale Price	\$375,000
Price Per Acre	\$260,417
Total Vacant	\$5.98 PSF

Property Highlights

Total Site Area	1.44 AC
Zoning	Industrial (HI)
Lot Dimensions:	226 x 240.5 x 279 x 268
Flood Plain	No
Utilities	At Street
Operating Expenses	\$1,251.10 RE Taxes

