

# WING OFFICE PARK

3950-3960 PARAMOUNT BLVD • LAKEWOOD, CA 90712



## PROPERTY FEATURES

**1,482-8,517 SF Available  
at \$1.75-\$1.95 PSF FSG**

- Adjacent to Douglas Park - Long Beach's New 4 Million SF+ Business Community
- Local Amenities - Long Beach Airport, Lakewood Country Club, Restaurants, Entertainment
- Golf Course Views
- Garden Rise / Walk Up Business Park
- 4:1,000 Free Parking
- Elevator Served
- Excellent 405 Freeway Access
- Frontier Fios Available

For more information, please contact:

**GARRETT MASSARO**

Principal

BRE#: 01771471

T: 562.354.2527

E: gmassaro@leelalb.com

**BRANDON CARRILLO**

Principal

BRE#: 01745362

T: 562.354.2510

E: bcarrillo@leelalb.com

**NATE ORTEGA**

Associate

BRE#: 01989242

T: 562.354.2531

E: nortega@leelalb.com

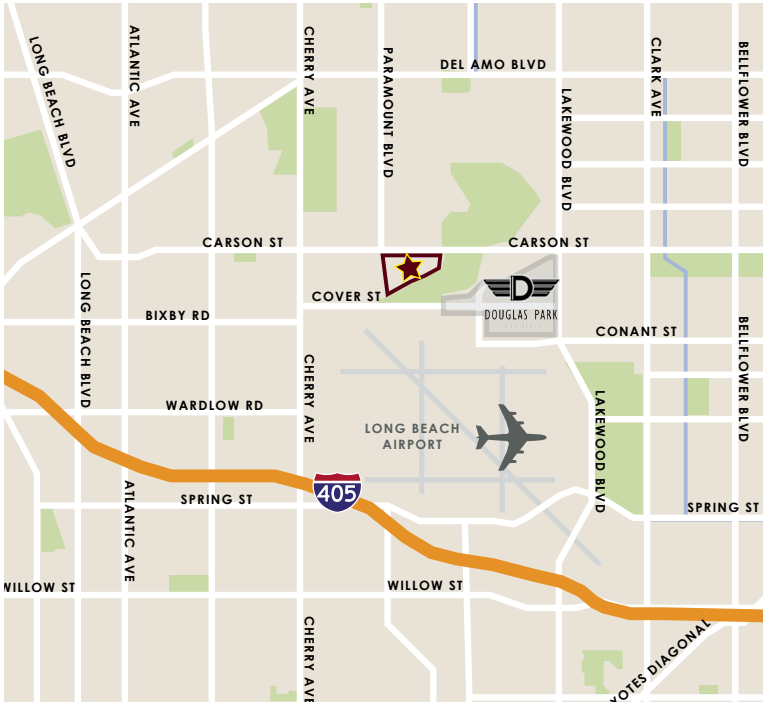


COMMERCIAL REAL ESTATE SERVICES

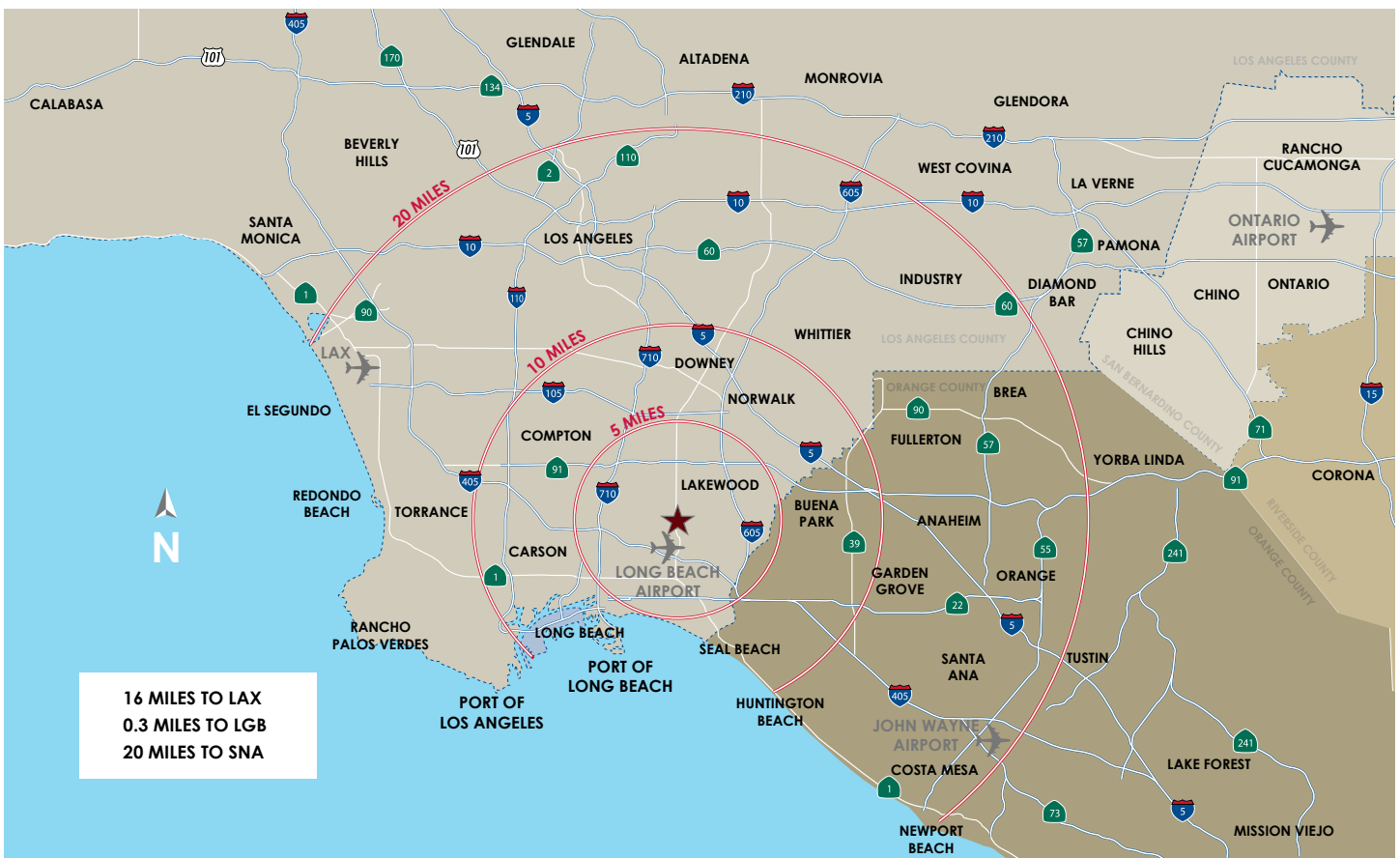
# WING OFFICE PARK

3950-3960 PARAMOUNT BLVD • LAKEWOOD, CA 90712

Wing Office Park is strategically located on the border of Long Beach and Lakewood and offers a 30-minute solution to major markets, airports, and ports.



- Centrally Located Between Los Angeles and Orange County
- Located Between Two Major Airports: Los Angeles International Airport & John Wayne Airport
- Adjacent to Long Beach Airport
- Adjacent to Douglas Park Development
- Close Proximity to the Ports of Los Angeles and Long Beach
- 405, 710, 605, and 91 Freeway Access
- Walking Distance To Restaurants, Shopping, and Public Transportation





# WING OFFICE PARK

3950-3960 PARAMOUNT BLVD • LAKEWOOD, CA 90712

## AVAILABLE SUITES AT 3950 PARAMOUNT BLVD:

SUITE	SQ FT	RATE	DESCRIPTION
101	2,509	\$1.75 FSG	6 Private Offices, Open Cubical Area, Kitchenette, Double Door Entry, Extensive Glass Line along 2 sides of Suite. Available Now.
110	1,482	\$1.95 FSG	Extensive Glass Line, Golf Course Views, Large Conference Room, 3 Offices, Space for 2 Cubicles, & Reception. Available With 30 Days Notice.
115	2,753	\$1.95 FSG	Extensive Glass, Corner Location, 5 Private Offices, Kitchen, IT Room, Reception, & Open Cubical Area.

## AVAILABLE SUITES AT 3960 PARAMOUNT BLVD:

SUITE	SQ FT	RATE	DESCRIPTION
106	1,773	\$1.95 FSG	3 Private offices, golf course views, storage room, Large open area. Available now.



Copyright © Lee & Associates. All rights reserved. No part of this work may be reproduced or distributed without written permission of the copyright owner. The information contained in this report was gathered by Lee & Associates from sources believed to be reliable. Lee & Associates, however, makes no representation concerning the accuracy or completeness of such information and expressly disclaims any responsibility for any inaccuracy contained herein. 5.15.17

5000 E. Spring St., Suite 600 | Long Beach, CA 90815 | PH: 562.354.2500 | [www.lee-associates.com](http://www.lee-associates.com)



# WING OFFICE PARK

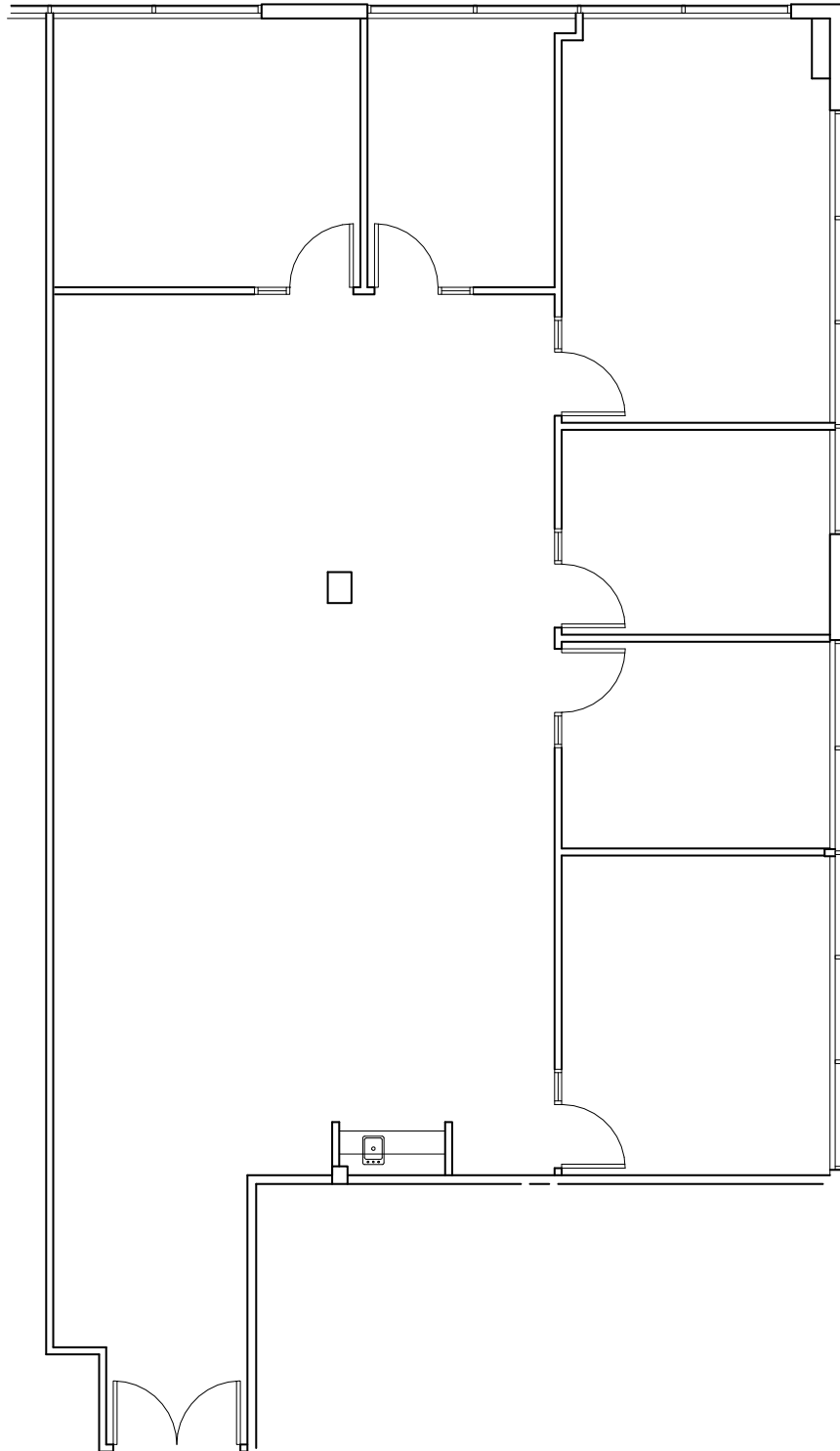
3950-3960 PARAMOUNT BLVD • LAKEWOOD, CA 90712



Copyright © Lee & Associates. All rights reserved. No part of this work may be reproduced or distributed without written permission of the copyright owner. The information contained in this report was gathered by Lee & Associates from sources believed to be reliable. Lee & Associates, however, makes no representation concerning the accuracy or completeness of such information and expressly disclaims any responsibility for any inaccuracy contained herein. 5.15.17

5000 E. Spring St., Suite 600 | Long Beach, CA 90815 | PH: 562.354.2500 | [www.lee-associates.com](http://www.lee-associates.com)

3950 Paramount Blvd • Lakewood, CA 90712  
Suite 101 • 2,509 SF



FOR MORE INFORMATION, PLEASE CONTACT:

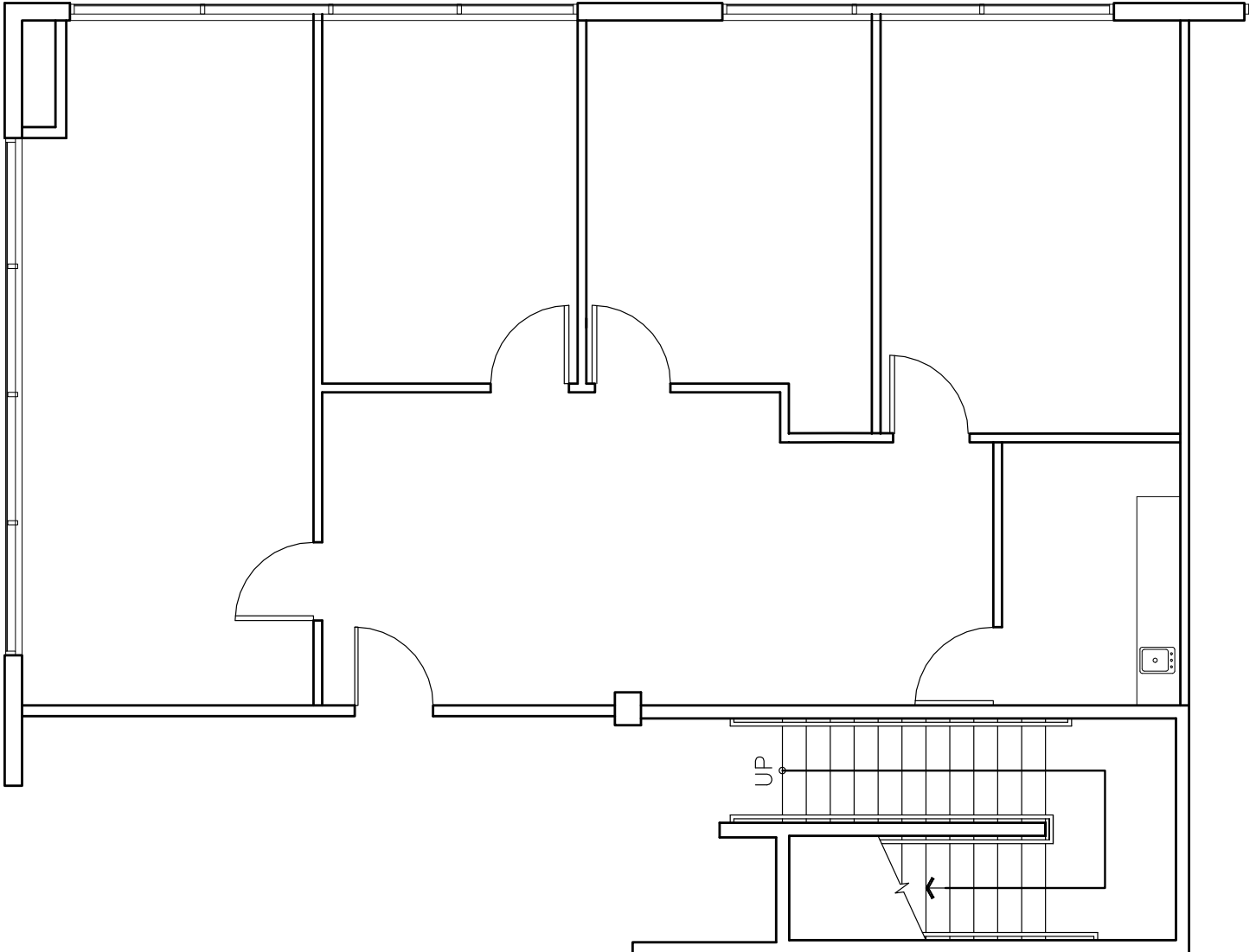


GARRETT MASSARO  
Principal  
BRE# 01771471  
PH: 562.354.2516  
E: gmassaro@leelalb.com

BRANDON CARRILLO  
Principal  
BRE# 01745362  
PH: 562.354.2510  
E: bcarrillo@leelalb.com

NATE ORTEGA  
Associate  
BRE# 01989242  
PH: 562.354.2531  
E: nortega@leelalb.com

3950 Paramount Blvd • Lakewood, CA 90712  
Suite 110 • 1,482 SF



FOR MORE INFORMATION, PLEASE CONTACT:

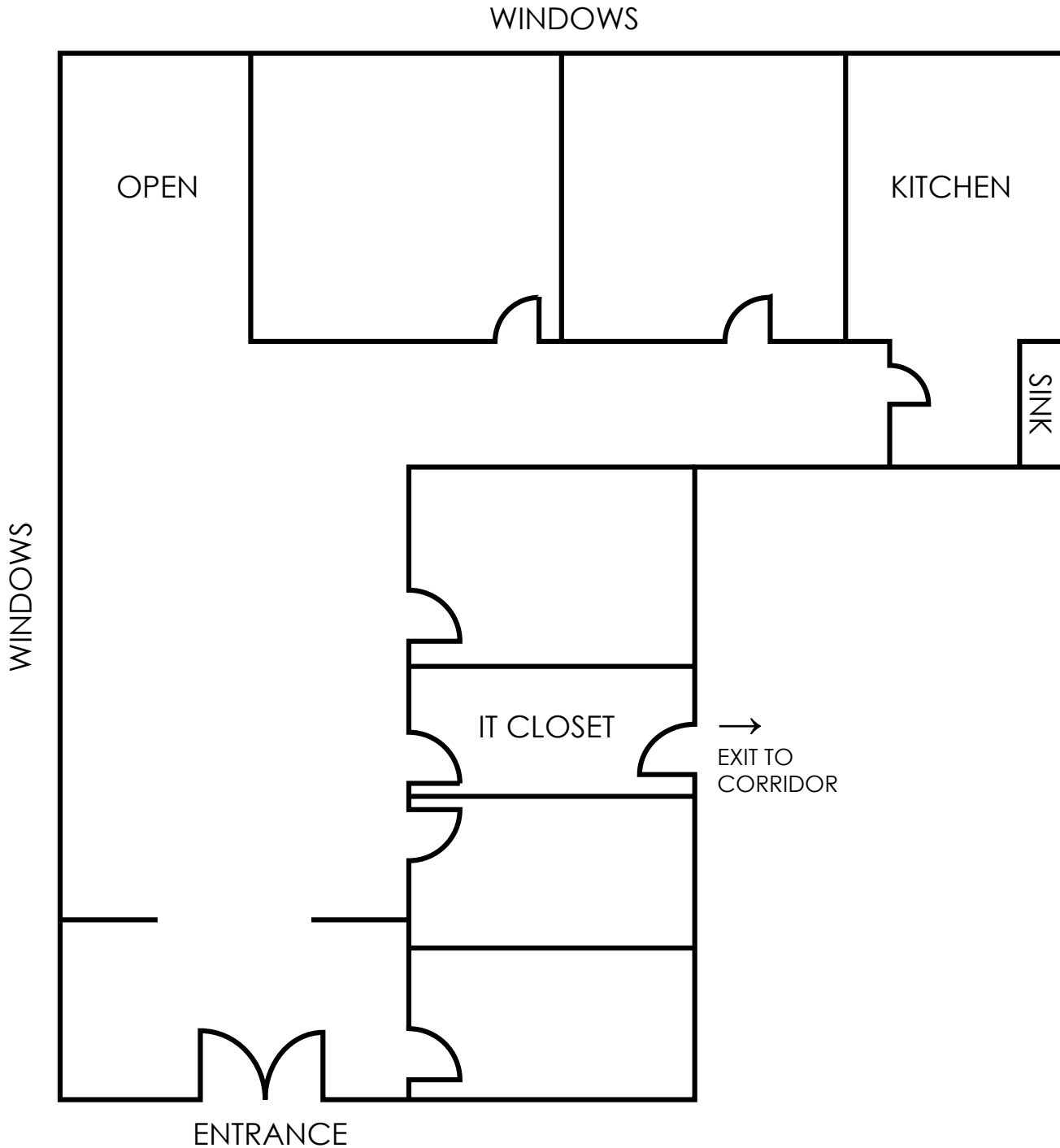


GARRETT MASSARO  
Principal  
BRE# 01771471  
PH: 562.354.2516  
E: gmassaro@leelalb.com

BRANDON CARRILLO  
Principal  
BRE# 01745362  
PH: 562.354.2510  
E: bcarrillo@leelalb.com

NATE ORTEGA  
Associate  
BRE# 01989242  
PH: 562.354.2531  
E: nortega@leelalb.com

3950 Paramount Blvd • Lakewood, CA 90712  
Suite 115 • 2,753 SF



FOR MORE INFORMATION, PLEASE CONTACT:

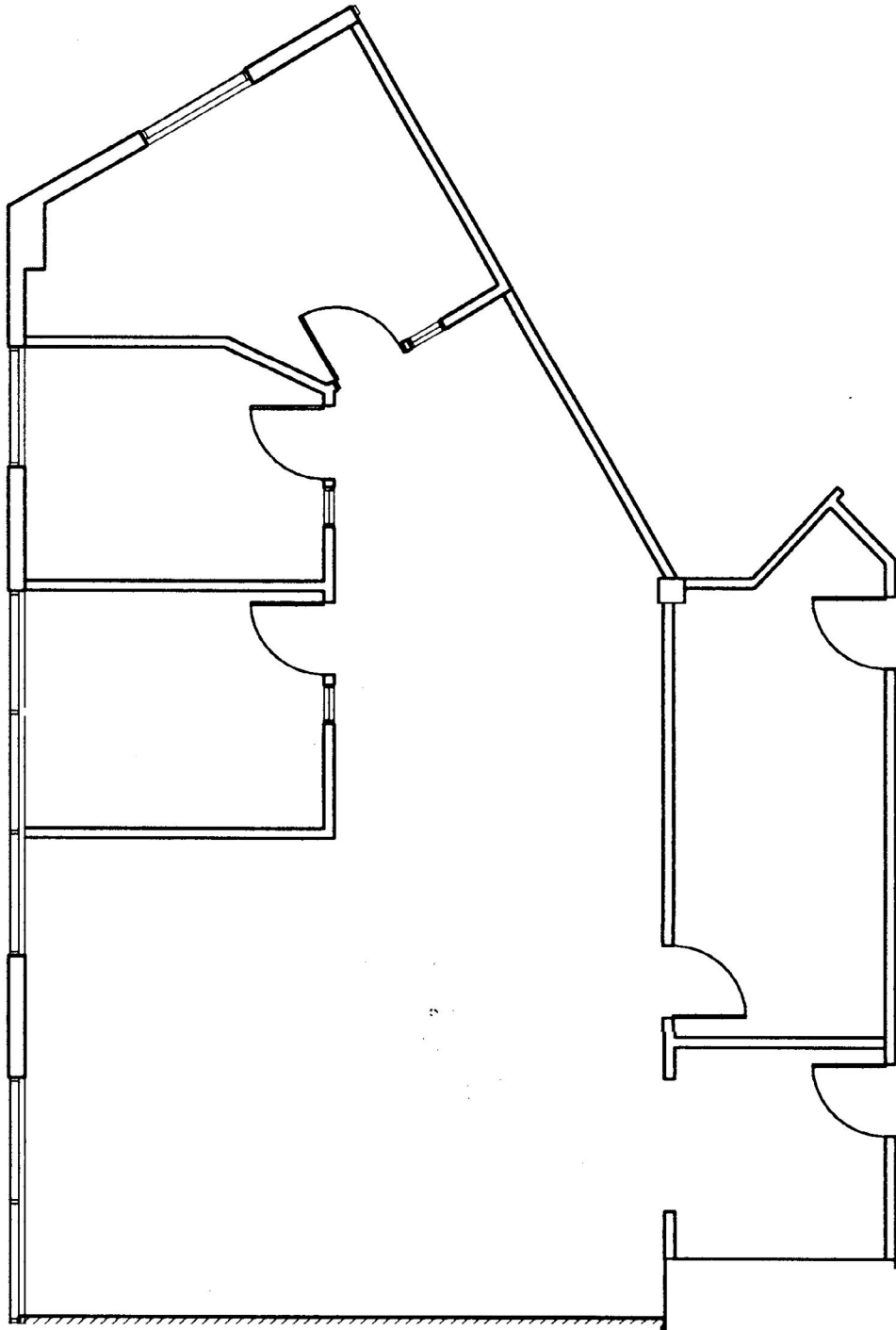


GARRETT MASSARO  
Principal  
BRE# 01771471  
PH: 562.354.2516  
E: gmassaro@leelalb.com

BRANDON CARRILLO  
Principal  
BRE# 01745362  
PH: 562.354.2510  
E: bcarrillo@leelalb.com

NATE ORTEGA  
Associate  
BRE# 01989242  
PH: 562.354.2531  
E: nortega@leelalb.com

3960 Paramount Blvd • Lakewood, CA 90712  
Suite 106 • 1,773 SF



FOR MORE INFORMATION, PLEASE CONTACT:



GARRETT MASSARO  
Principal  
BRE# 01771471  
PH: 562.354.2516  
E: gmassaro@leelalb.com

BRANDON CARRILLO  
Principal  
BRE# 01745362  
PH: 562.354.2510  
E: bcarrillo@leelalb.com

NATE ORTEGA  
Associate  
BRE# 01989242  
PH: 562.354.2531  
E: nortega@leelalb.com