

1300 S EL CAMINO

SAN MATEO



TOSS VALLENTINE
+1 650 480 2133
toss.vallentine@am.jll.com
Lic #: 01742629

TONY GUGLIELMI
+1 650 480 2191
tony.guglielmi@am.jll.com
Lic #: 01785436





FEATURES

INTERIOR

- Custom artwork
- Interactive directory
- Upgraded restrooms
- New elevator operating system
- Common area upgrades
- Newly constructed spec suites

EXTERIOR

- On-site bike share program
- Newly installed EV charging stations
- New landscaping and planter boxes
- Door entrance remodel
- Parking lot and garage resurfaced



FINISHES

GLASS LINED ROOMS



NEW KITCHENS



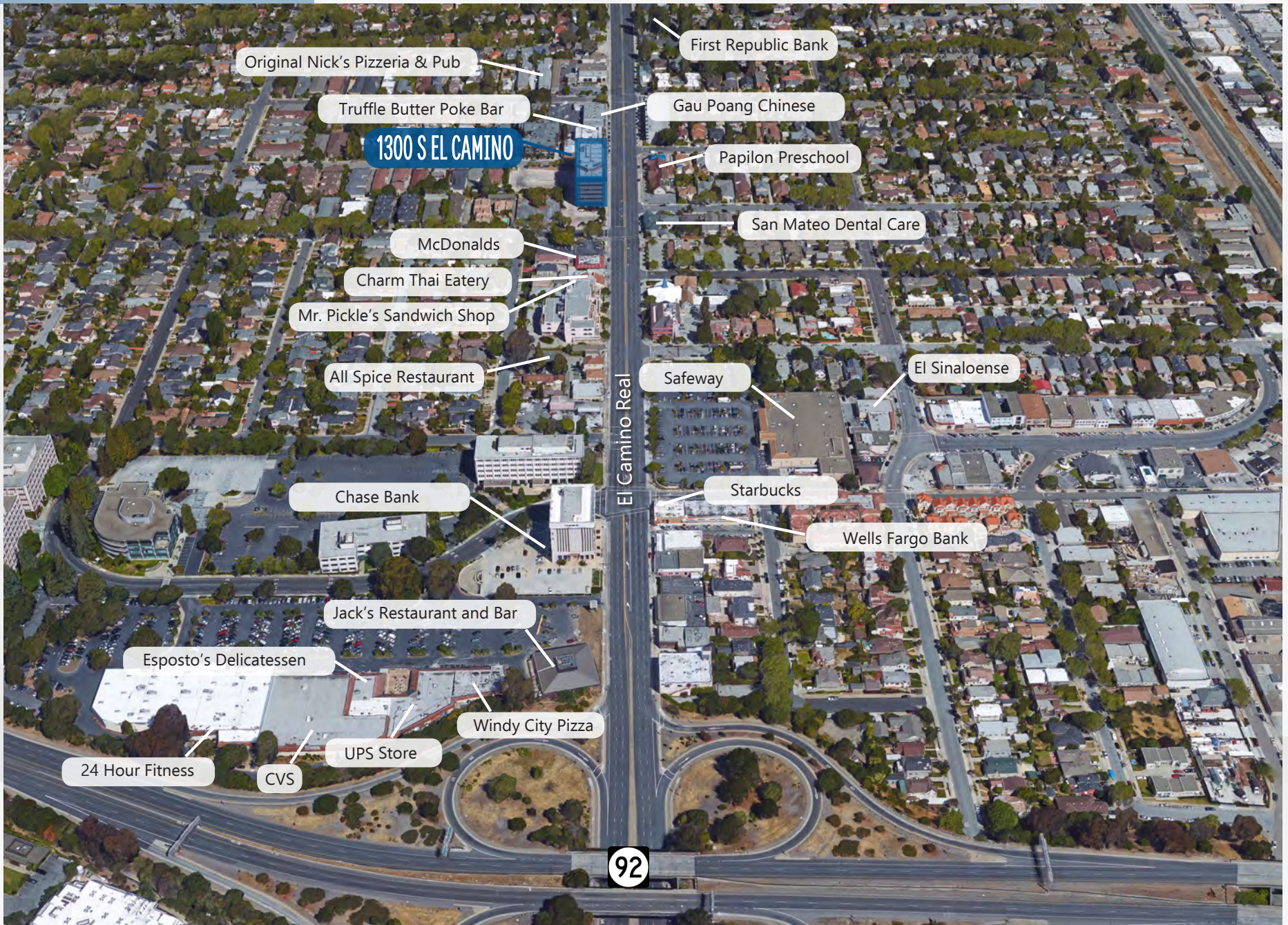
POLISHED CONCRETE



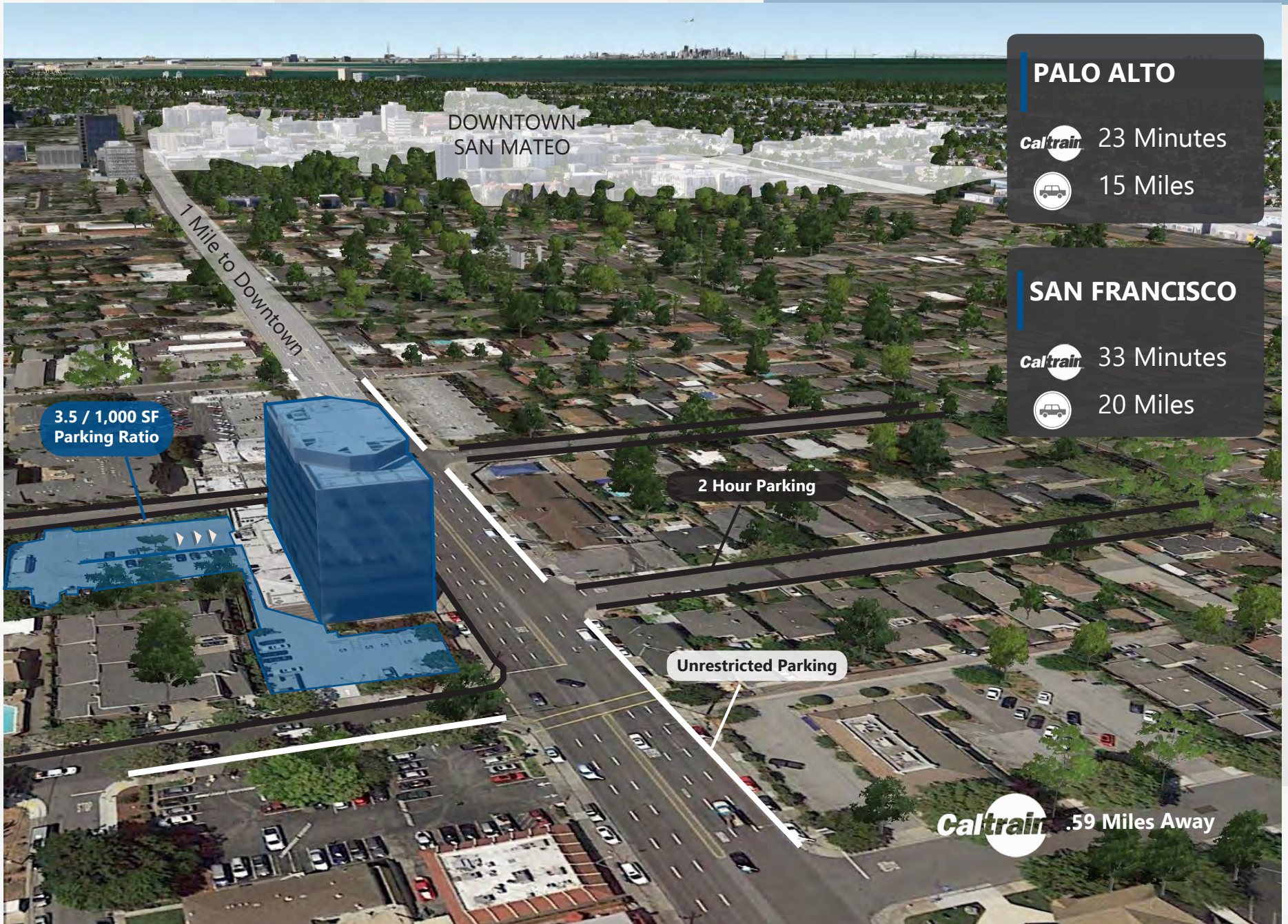
OPEN CEILINGS



AMENITIES



TRANSPORTATION



DOWNTOWN
SAN MATEO

1 Mile to Downtown


3.5 / 1,000 SF
Parking Ratio

2 Hour Parking

Unrestricted Parking


PALO ALTO

Caltrain 23 Minutes

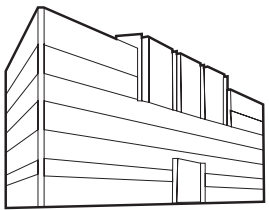
 15 Miles

SAN FRANCISCO

Caltrain 33 Minutes

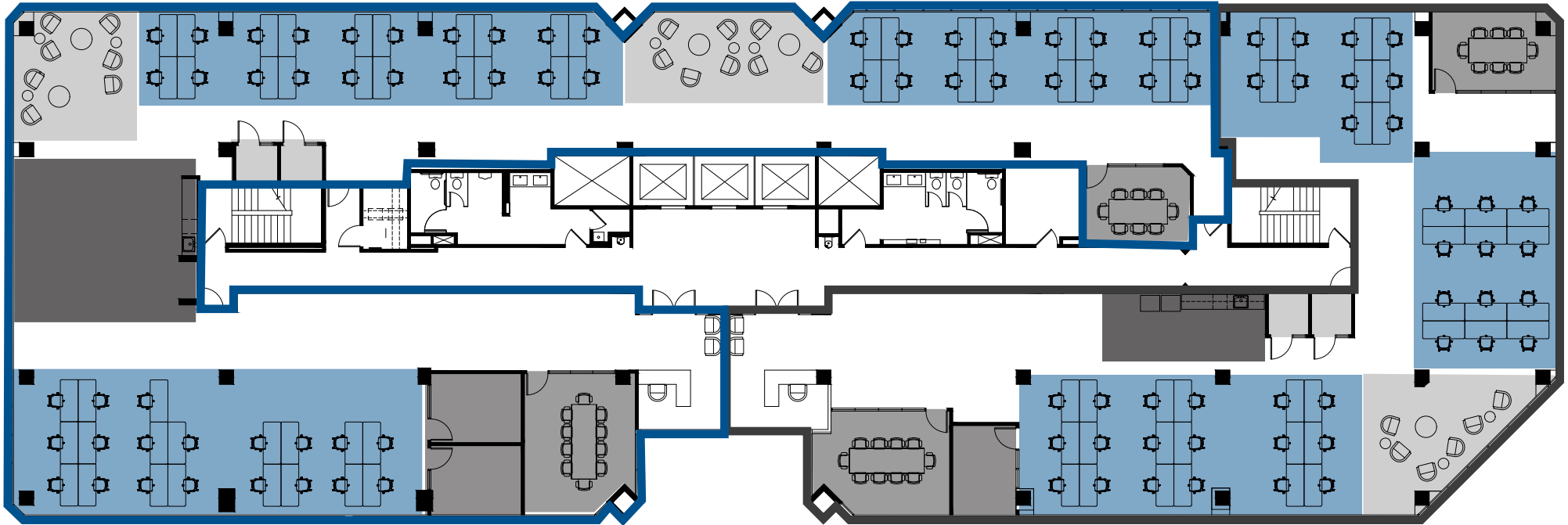
 20 Miles

Caltrain .59 Miles Away



1300 S EL CAMINO

2ND FLOOR



*HYPOTHETICAL MULTI-TENANT FLOOR PLAN & FURNITURE PLAN

SUITE A
±10,218 SF
DELIVERS FEB 2020

- 55 Workstations
- 2 Private Offices
- Collaboration / Phone Rooms
- 2 Conference Rooms
- Break Area

SUITES CAN BE SIZED-TO-SUIT

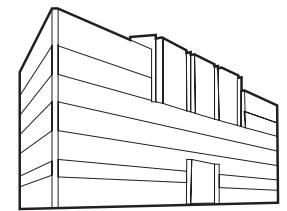
TOSS VALLENTINE
 +1 650 480 2133
 toss.vallentine@am.jll.com
 Lic #: 01742629

TONY GUGLIELMI
 +1 650 480 2191
 tony.guglielmi@am.jll.com
 Lic #: 01785436

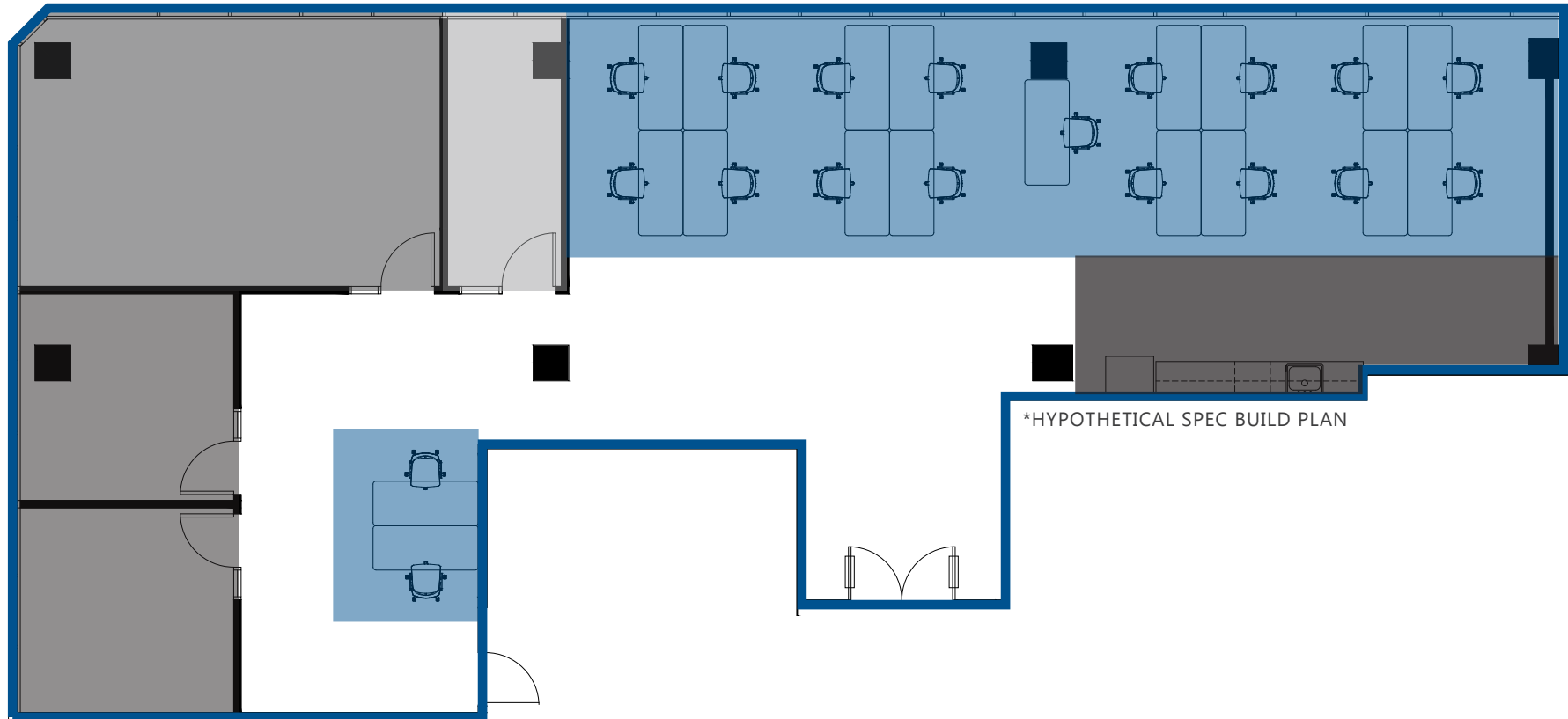
SUITE B
±6,764 SF
DELIVERS FEB 2020

- 40 Workstations
- 1 Private Office
- Collaboration / Phone Rooms
- 2 Conference Rooms
- Break Area

3RD FLOOR



1300 S EL CAMINO



SUITE 310
±3,414 SF
DELIVERS MARCH 2020

- 19 Workstations
- 2 Offices
- 1 Lg. Conference Room
- Collaboration/Phone Room
- Break Area

TOSS VALLENTINE
+1 650 480 2133
toss.valentine@am.jll.com
Lic #: 01742629

TONY GUGLIELMI
+1 650 480 2191
tony.guglielmi@am.jll.com
Lic #: 01785436

1300 S EL CAMINO

SAN MATEO

TOSS VALLENTINE
+1 650 480 2133
toss.vallentine@am.jll.com
Lic #: 01742629

TONY GUGLIELMI
+1 650 480 2191
tony.guglielmi@am.jll.com
Lic #: 01785436

MERIDIAN
Buildings for Life



SHEGON ALLEY'S community foundation