

ELK GROVE COMMERCE CENTER

Warehouse/Flex Space - 21 Building Campus



- Immediate occupancy
- 2,000 to 15,000 SF units available
- On-site leasing and management
- Truck docks and grade level doors
- 14' 6" clear heights
- Within 1 mile south of I-90 Elmhurst ramp
- 200 amp/3-phase 120-240 volt
- Expansion capabilities
- Masonry construction

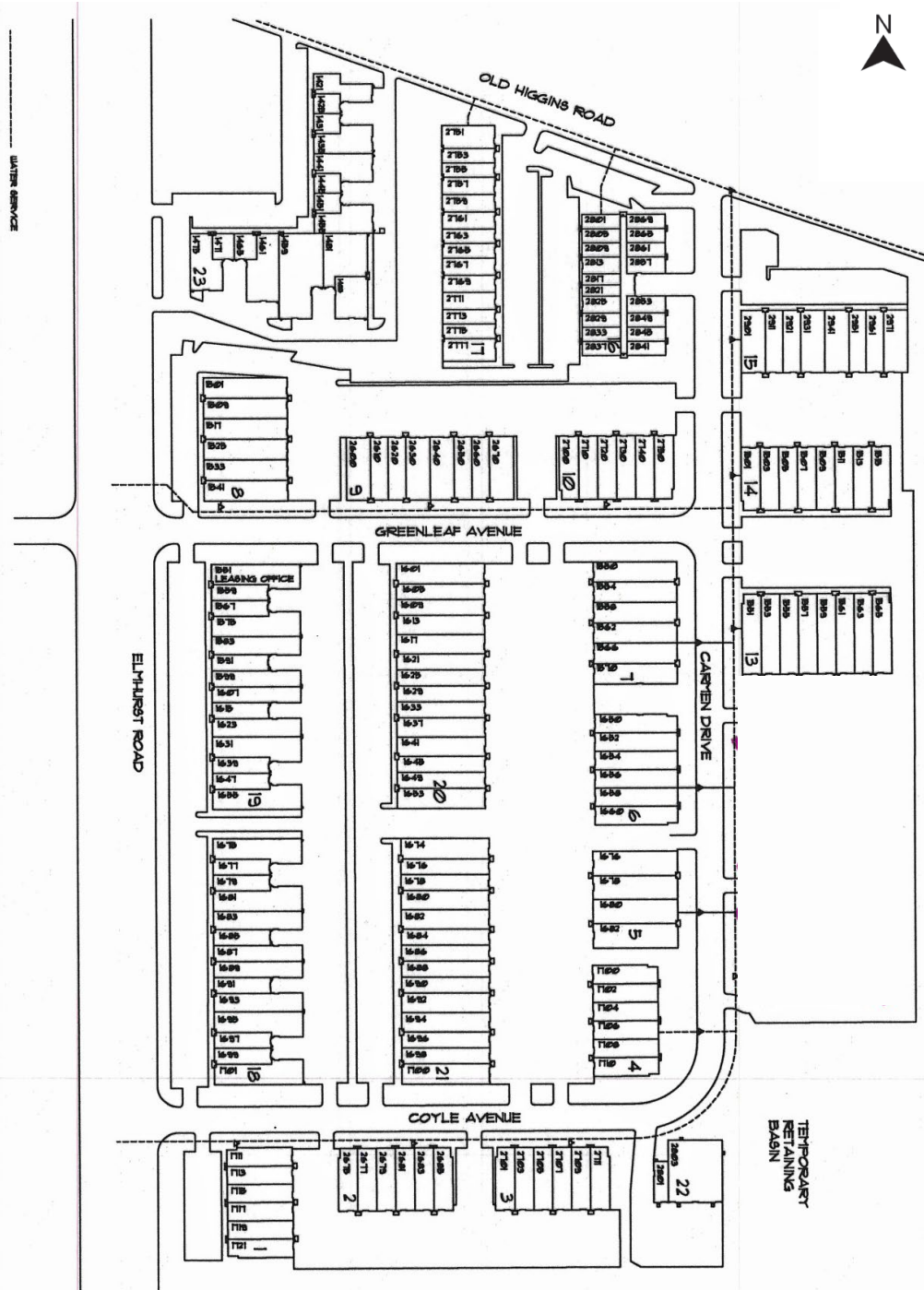
ADDRESS	SIZE (SF)	OFFICE (SF)	LOADING	RENT	OP EX
2649-2653 Greenleaf	9,088	15%	2 Exterior Docks & 1 Drive-in Door	\$7.95	\$1.05
2921-2931 Old Higgins	7,965	15%	3 Exterior Docks	\$7.80	\$1.05
2600-2610 Greenleaf	7,965	20%	3 Exterior Docks	\$7.80	\$1.05
2653 Greenleaf	5,112	25%	2 Exterior Docks & 1 Drive-in Door	\$8.25	\$1.05
1485 Elmhurst	4,650	10%	1 Common Dock & 1 Drive-in Door	\$7.80	\$1.05
1711 Elmhurst	3,600	40%	1 Exterior Dock	\$8.25	\$1.05
2710 Greenleaf	3,600	10%	1 Exterior Dock	\$7.80	\$1.05
1697 Elmhurst	3,230	10%	1 Common Dock	\$7.80	\$1.05
1471 Elmhurst	2,200	10%	1 Common Dock	\$7.80	\$1.05
2817 Old Higgins	2,000	10%	1 Common Dock & 1 Drive-in Door	\$7.80	\$1.77
2853 Old Higgins	2,000	10%	1 Common Dock	\$7.80	\$1.77

Mark Baumhart, CCIM
Principal
mbaumhart@lee-associates.com
D 773.355.3000

All information furnished regarding property for sale, rental or financing is from sources deemed reliable, but no warranty or representation is made to the accuracy thereof and same is submitted to errors, omissions, change of price, rental or other conditions prior to sale, lease or financing or withdrawal without notice. No liability of any kind is to be imposed on the broker herein.

ELK GROVE COMMERCE CENTER

Warehouse/Flex Space - 21 Building Campus



Mark Baumhart, CCIM
Principal
mbaumhart@lee-associates.com
D 773.355.3000

All information furnished regarding property for sale, rental or financing is from sources deemed reliable, but no warranty or representation is made to the accuracy thereof and same is submitted to errors, omissions, change of price, rental or other conditions prior to sale, lease or financing or withdrawal without notice. No liability of any kind is to be imposed on the broker herein.