

For Lease

FCB Building

1,135 to 16,846 SF



Farm Credit Bank Building

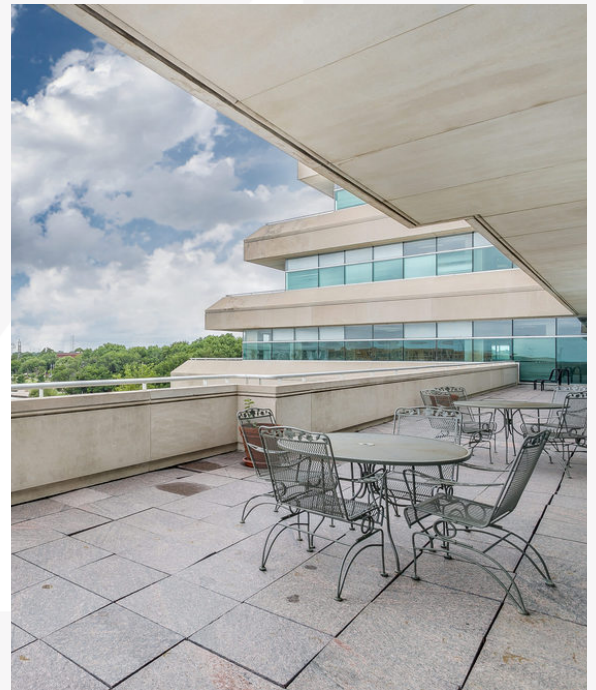
245 N. Waco Street
Wichita, Kansas 67202

Property Highlights

- Premium river front property in downtown Wichita
- Class A building, high quality co-tenants
- Excellent internet connectivity and generator backup power
- 230 surface parking spaces and 451 covered parking garage spaces
- 86% occupancy
- Cafeteria and Conference Center

Property Description

The Farm Credit Bank Building is located on the Arkansas River just northwest of Wichita's Central Business District. It is minutes from US Highway 54/400 and is only 20 minutes from any destination in the city. The location provides amazing visibility and benefits from \$30 million in riverfront investments and improvements – including a new river promenade and enhancements to walkways adjacent to the building. The building's exterior is an iconic design that has remained a classic since its construction in 1983, utilizing a limestone clad curtain wall of concrete and glass panels. The mechanical rooms and common areas are in pristine condition. The property has been extensively updated to include granite lobby floors, fully modernized elevators, various fire and safety systems, access system, energy savings devices and features an operating cafeteria and conference center on the garden level. The building offers the highest quality office environment in the city.



For more information

Patrick Ahern, SIOR, CCIM

O: 316 847 4914

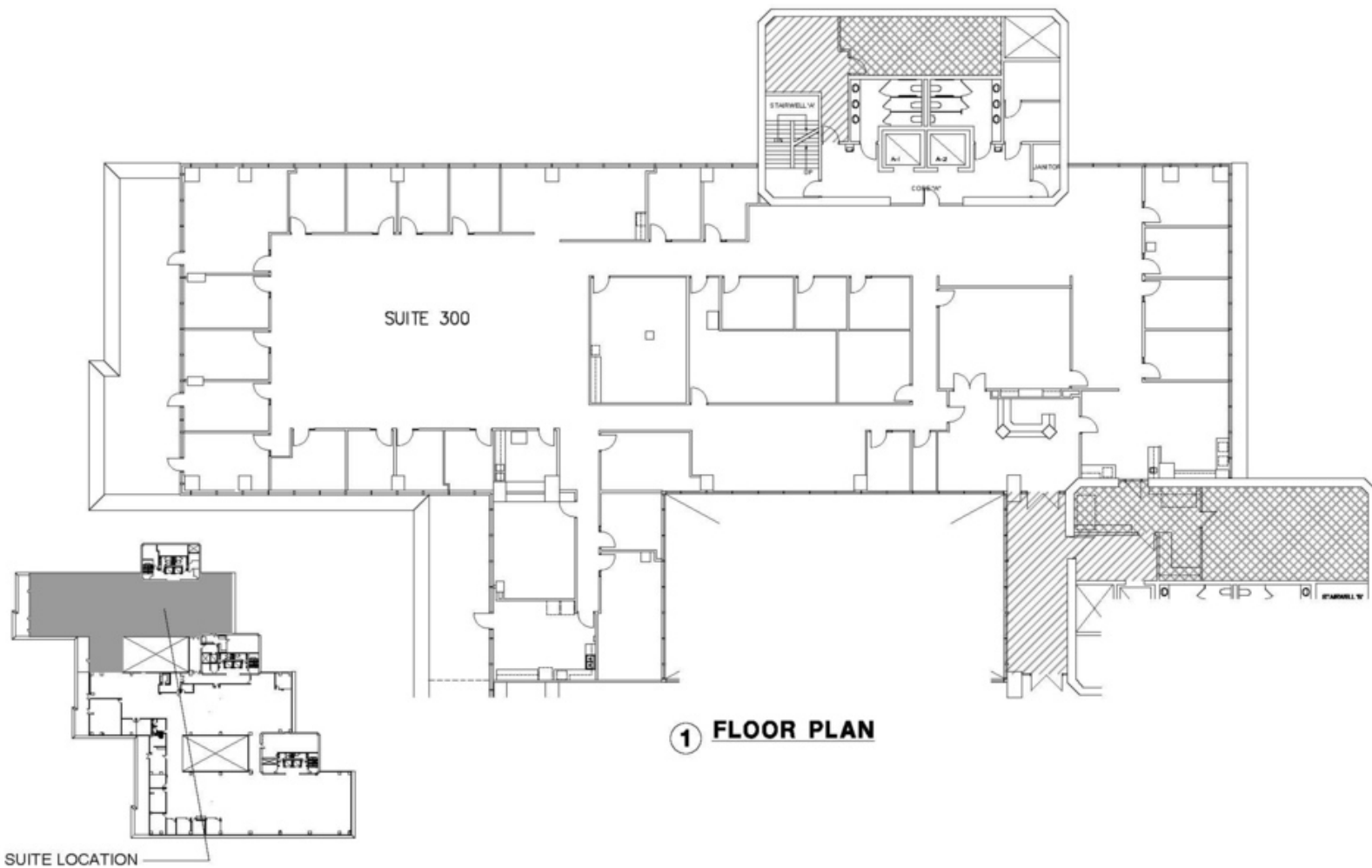
pahern@naimartens.com



435 South Broadway,
Wichita, KS 67202
316 262 0000 tel
naimartens.com



Additional Photos



Completed Renovation



Building Cafe



Co-working Space



Fitness Center

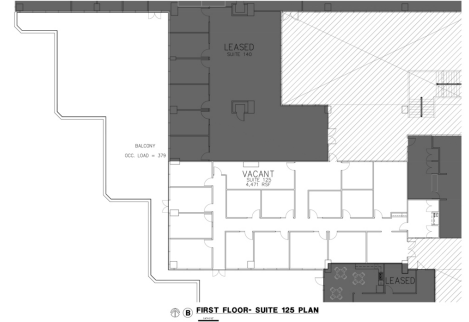


Locker Rooms

For Lease

FCB Building

1,135 to 16,846 SF



AVAILABLE SPACES

Suite 100	2,852 SF
Suite 105	2,677 SF
Suite 125	4,471 SF
Suite 230	2,804 SF
Suite 250	1,792 SF
Suite 300	16,846 SF
Suite 402	1,135 SF
Suite T175	1,500 SF