

±96 ACRES ON DANDINI BOULEVARD

EXCLUSIVE LISTING | MULTI-FAMILY DEVELOPMENT OPPORTUNITY | RENO, NEVADA

LOCATION The Property is located north and south of Dandini Boulevard in Reno, Washoe County, Nevada

SIZE ±96 gross acres

PRICE Submit

PROPERTY CONDITION Vacant/Unimproved

PARCELS 035-011-04, 035-012-11, 035-031-01, 035-032-01

TOPOGRAPHY Gentle to Moderate slopes

ZONING/LAND USE MU/DRC (Mixed Use/ Dandini Regional Center Planning Area Overlay Zoning District). A mix of land uses are permitted by the underlying Mixed Use base zoning district.

DEVELOPMENT POLICY New development should provide a minimum residential density of 14 dwelling units per acre and a minimum of 0.75 floor area ratio (FAR) for nonresidential and mixed use development.

UNIT COUNT 453

Subject

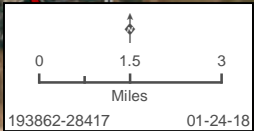
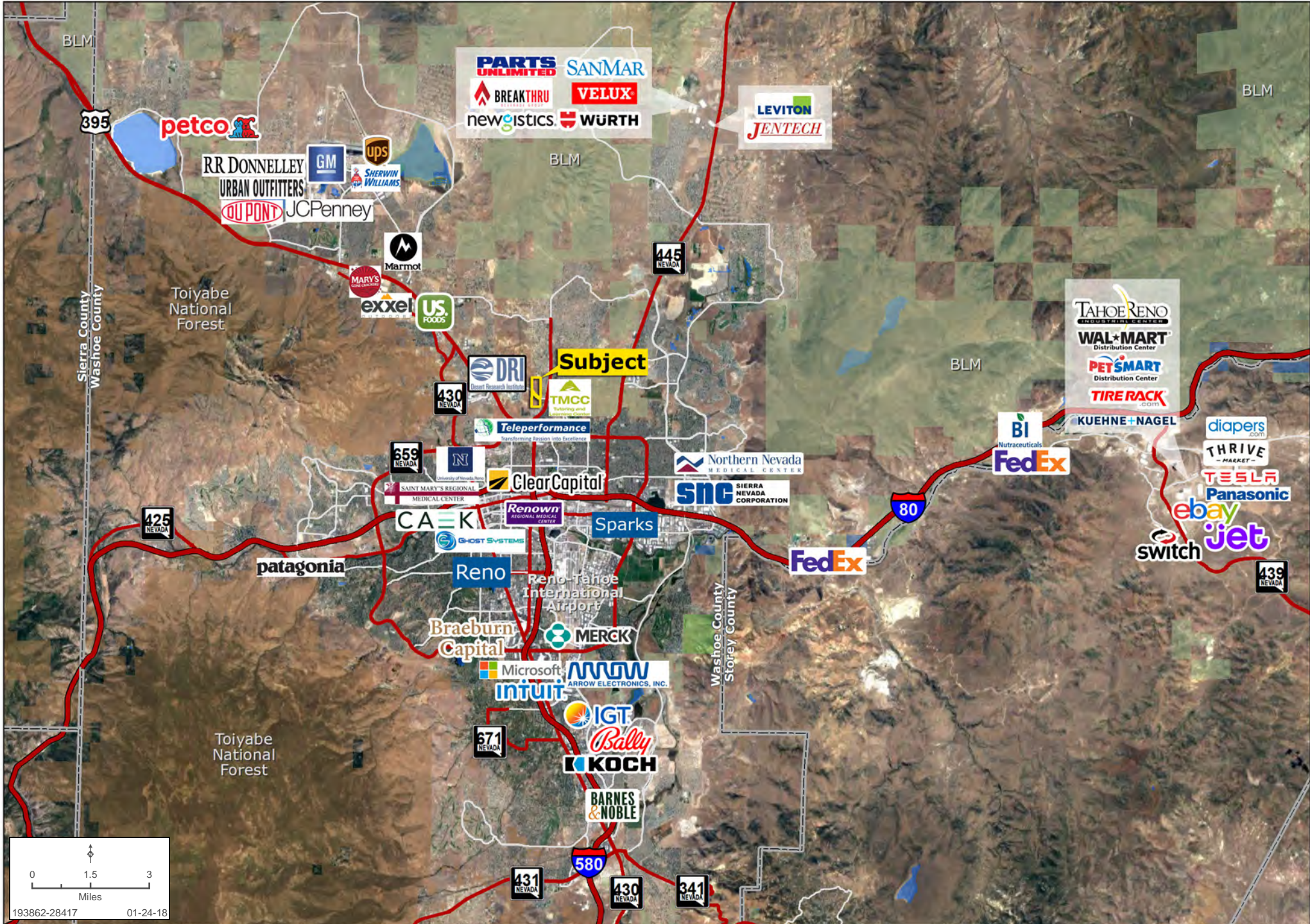
Rick Hildreth | rhildreth@landadvisors.com

200 S. Virginia Street, 8th Floor, Reno, Nevada 89501 ph. 775.398.3049 | www.landadvisors.com

The information contained herein is from sources deemed reliable. We have no reason to doubt its accuracy but do not guarantee it. It is the responsibility of the person reviewing this information to independently verify it. This package is subject to change, prior sale or complete withdrawal. NVWashoe193862-7.31.18

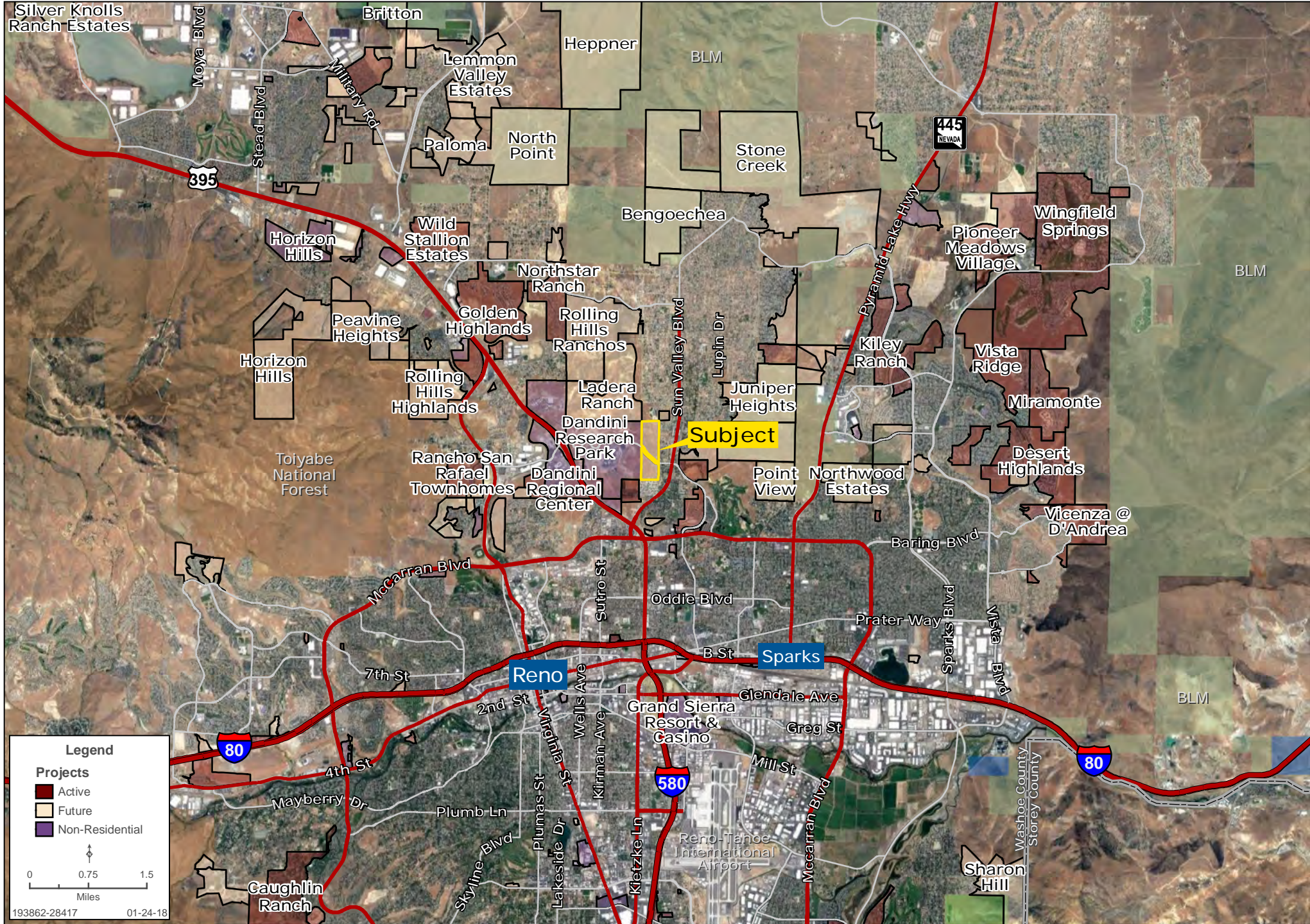
SURROUNDING EMPLOYERS MAP

Rick Hildreth | 702.262.9199 | www.landadvisors.com



REGIONAL MAP

Rick Hildreth | 702.262.9199 | www.landadvisors.com



OBLIQUE MAP

Rick Hildreth | 702.262.9199 | www.landadvisors.com

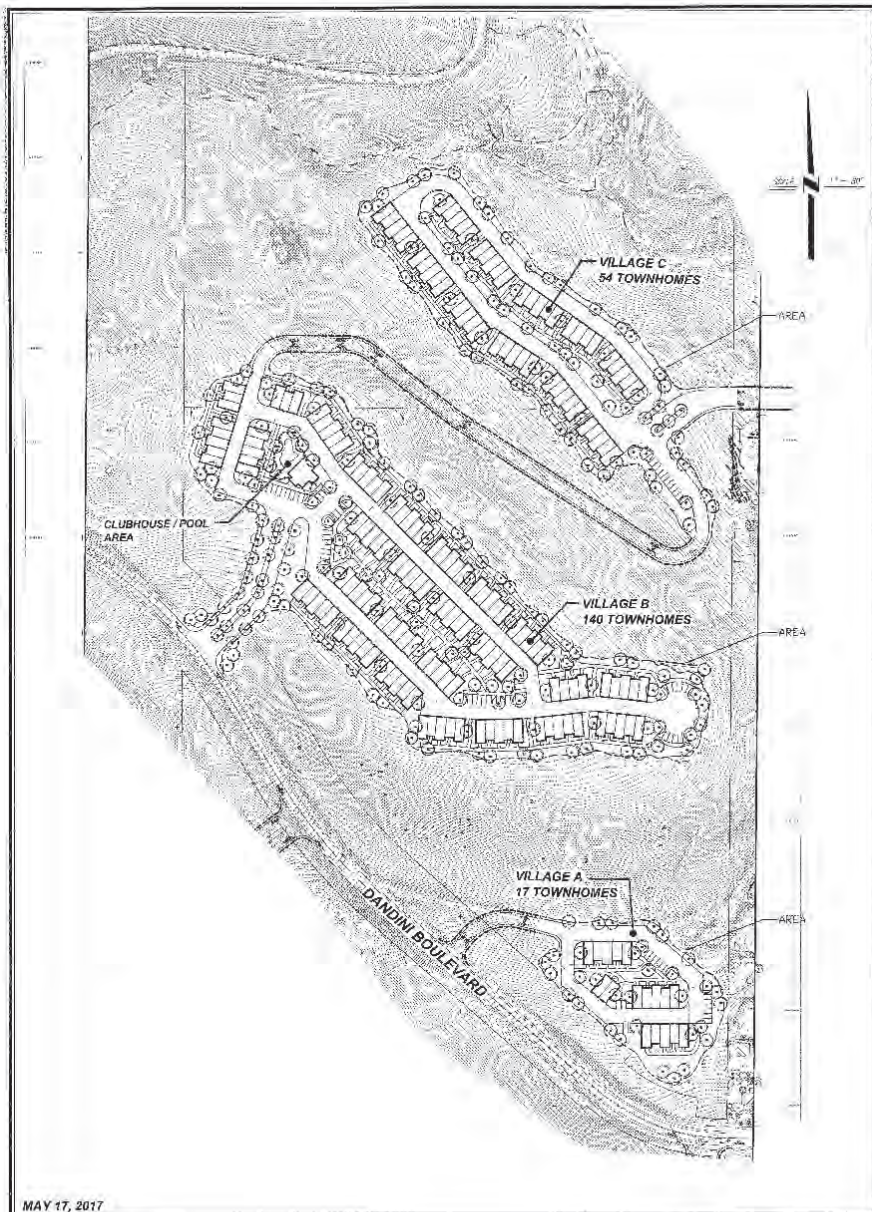


193862-28417 01-24-18

PROPERTY DETAIL MAP

Rick Hildreth | 702.262.9199 | www.landadvisors.com

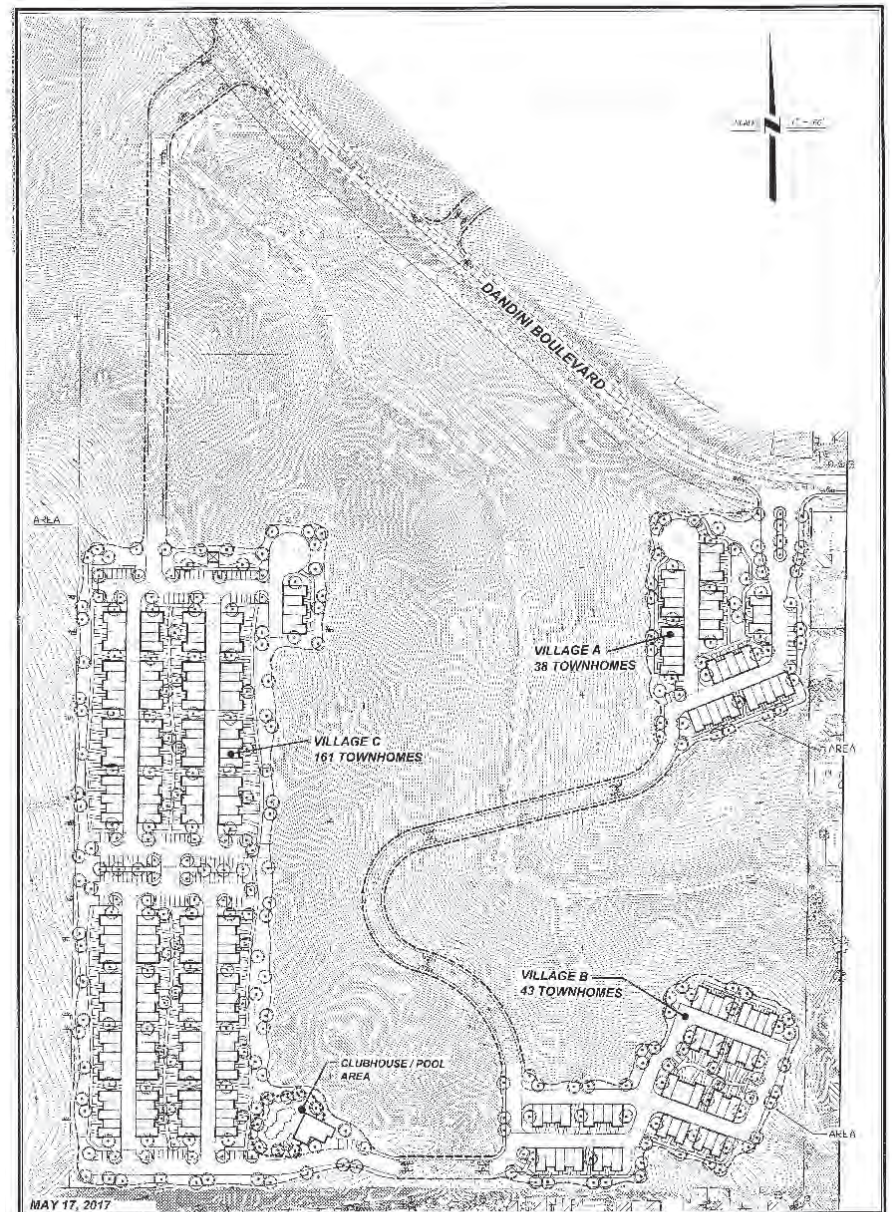




MAY 17, 2017

DANDINI - NORTHERN PARCEL

RENO, NEVADA
Lansing Companies 12671 High Bluff Dr., Suite 150, San Diego, CA 92130 (858) 523-0719



MAY 17, 2017

DANDINI - SOUTHERN PARCEL

RENO, NEVADA
Lansing Companies 12671 High Bluff Dr., Suite 150, San Diego, CA 92130 (858) 523-0719

