

THE SHOPS AT  
**COURT**  
STREET

---

BROOKLYN



# THE SHOPS AT COURT STREET

The Shops at Court Street is a 115,340 square foot urban retail complex in Brooklyn, New York. Located on the busy thoroughfare of Court Street between State Street and Schermerhorn Street, the property is positioned within walking distance to the Brooklyn Court Houses and

surrounded by a mix of national as well as local retailers. Such as Verizon Wireless, Trader Joe's, Chase Bank, McDonald's, Starbucks, Soul Cycle, Sephora and Neiman Marcus among others that draw shoppers, neighborhood residents and employees to the bustling block.



## NEIGHBORHOOD

The borough of Brooklyn has a population of approximately 2.5 million. Borough Hall, where The Shops at Court Street is located, is one of the busiest hubs in Downtown Brooklyn. It is neighbor to the Brooklyn Court Houses as well as bordering on Cobble Hill – one of the most affluent neighborhoods in Brooklyn.

- Conveniently located close to mass transit.
- Prominent brand visibility for prospective retailers in a strong retail area.
- Growth area with over 8,000 residents within walking distance and 25,000 residents within a quarter mile.

## AVAILABLE SPACES

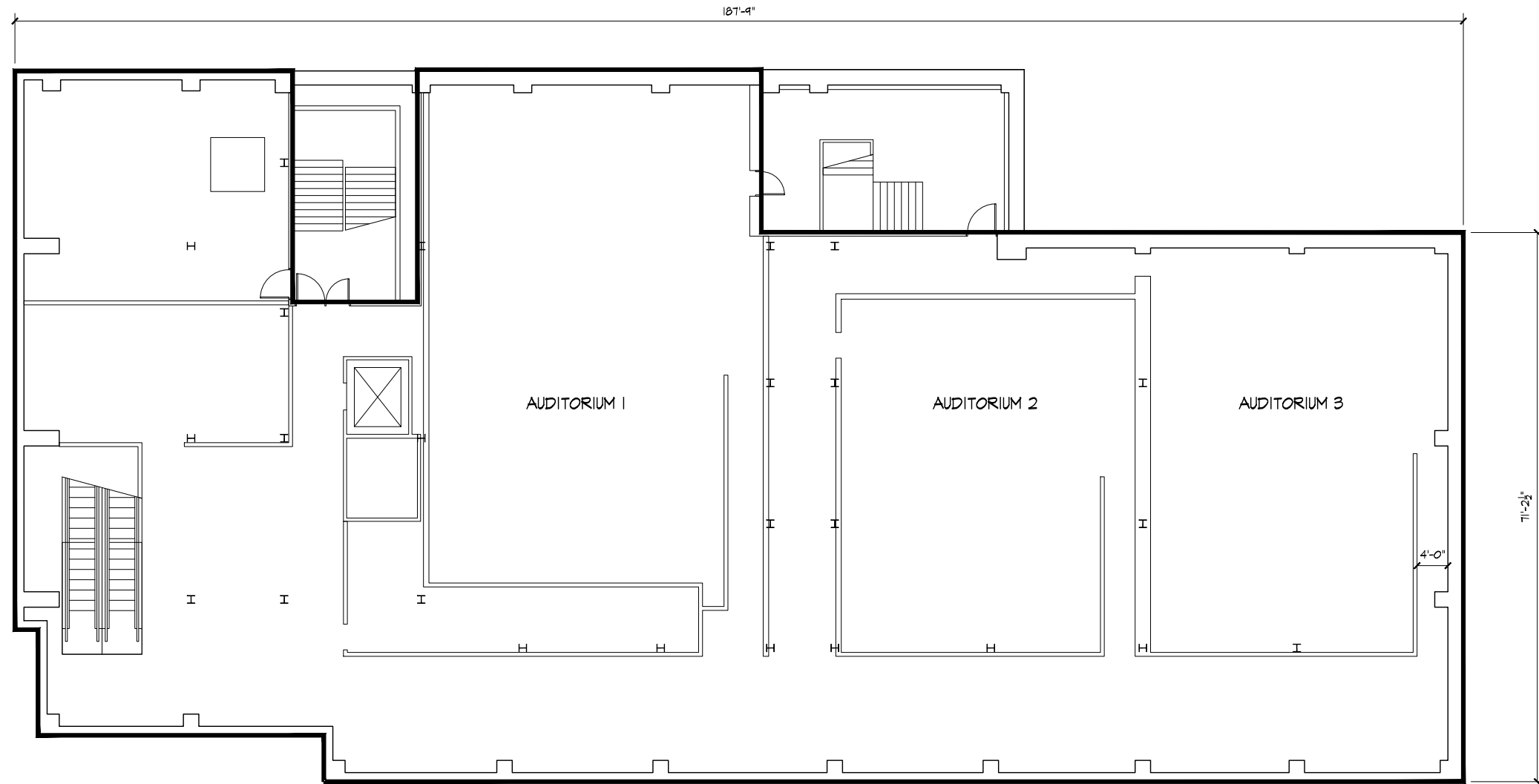
Sub Cellar – 14,617 SF	6th Level – 4,264 SF
Cellar – 7,073 SF	7th Level – 8,946 SF
Street Level – 14,130 SF	8th Level – 3,284 SF
2nd Level – 13,035 SF	9th Level – 8,777 SF
3rd Level – 13,198 SF	10th Level – 2,766 SF
4th Level – 4,036 SF	11th Level – 6,184 SF
5th Level – 13,364 SF	12th Level – 1,666 SF

## TRANSPORTATION

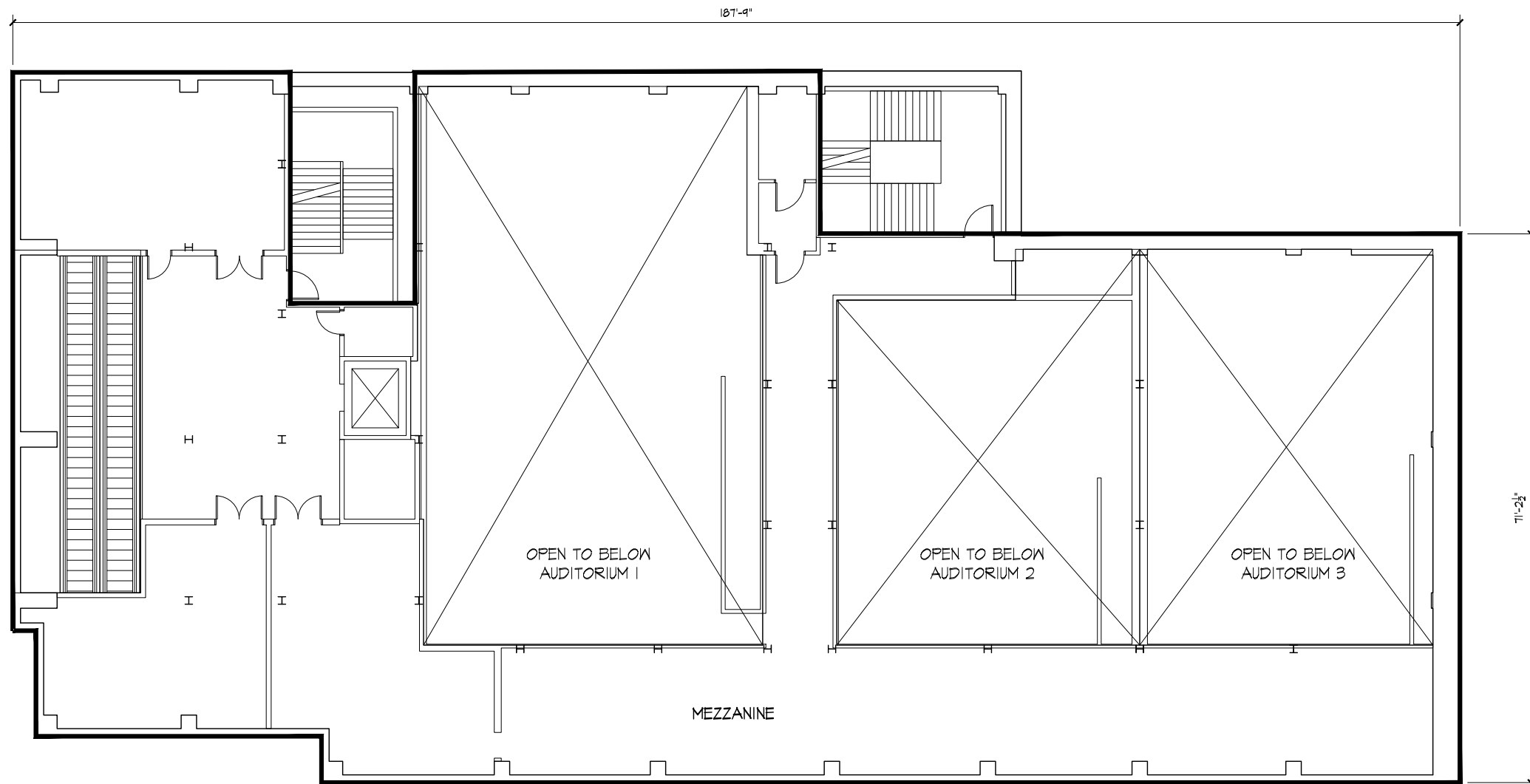
The Shops at Court Street is conveniently situated amidst the Court Street/Borough Hall Subway Station and the Bergen Street Subway Station, which are served by the N, R, W, 2, 3, 4, 5 trains as well as the F and G Subway lines. Shoppers can also arrive to The Shops at Court Street via the B57 Bus which stops on the corner of Court Street and Schermerhorn Street.

## AVAILABLE SPACES



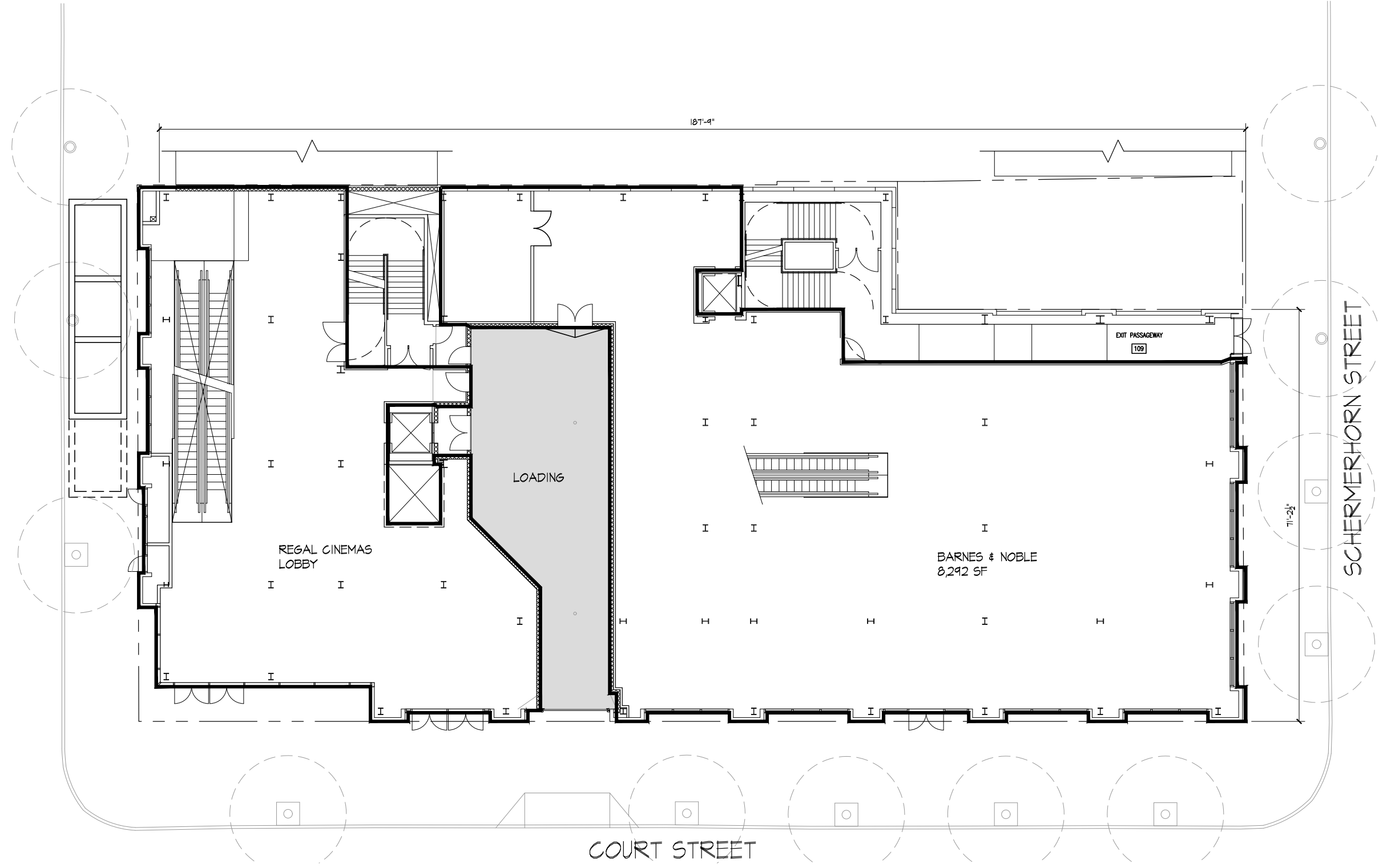


NTS



NTS

STATE STREET



COURT STREET

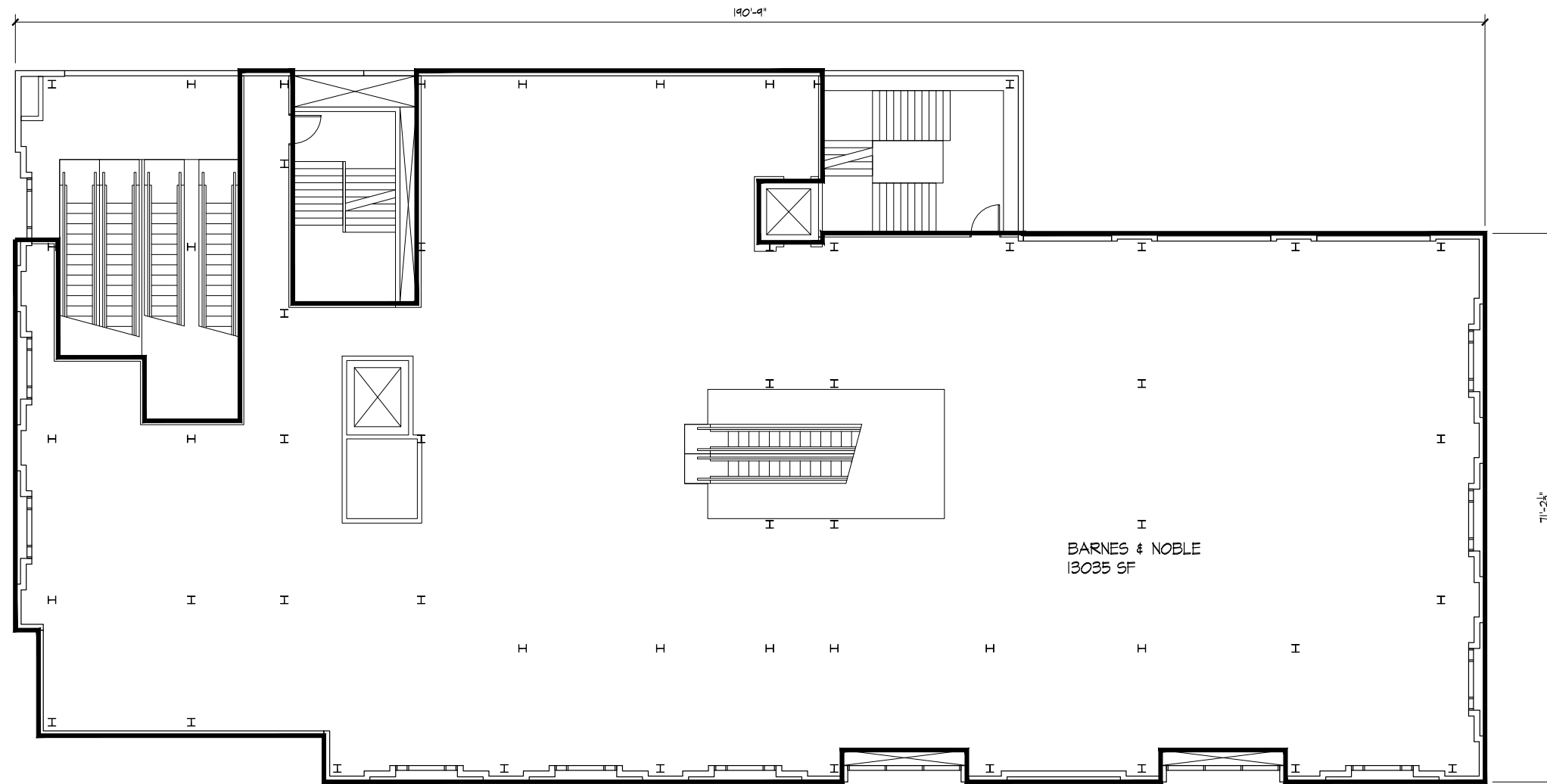
SCHERMERHORN STREET



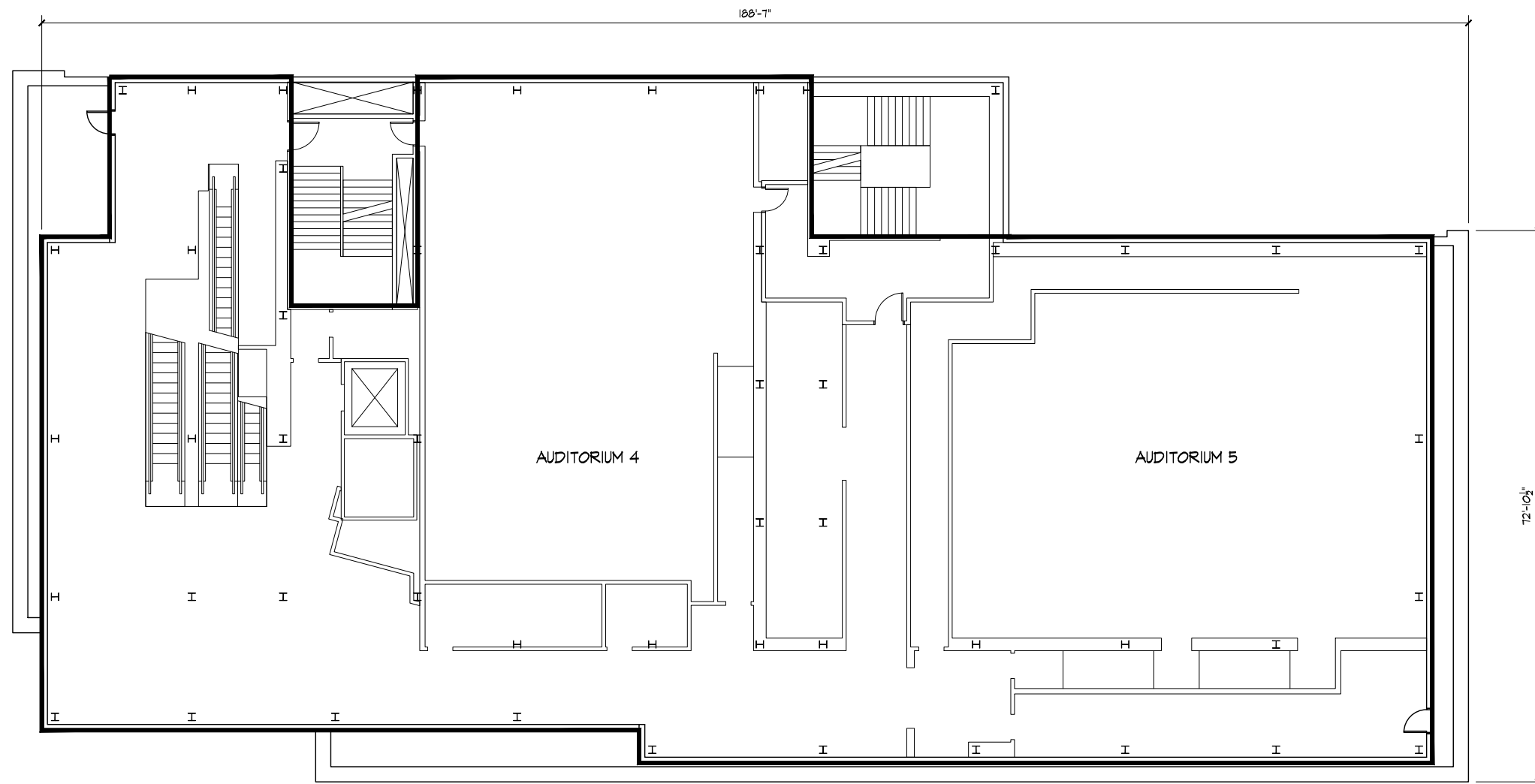
NTS

THE SHOPS AT COURT STREET

STREET LEVEL  
14,130 SF

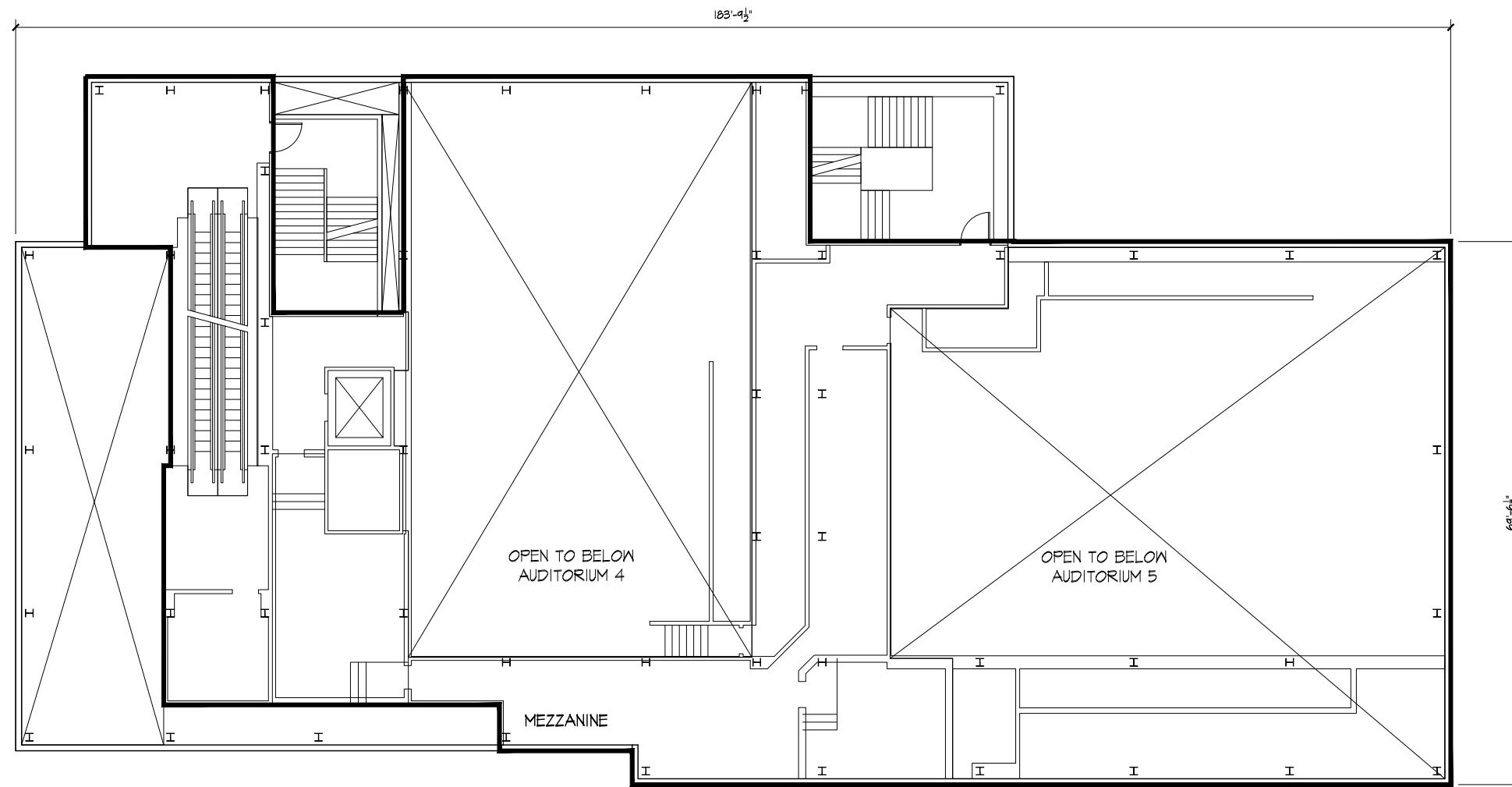


NTS

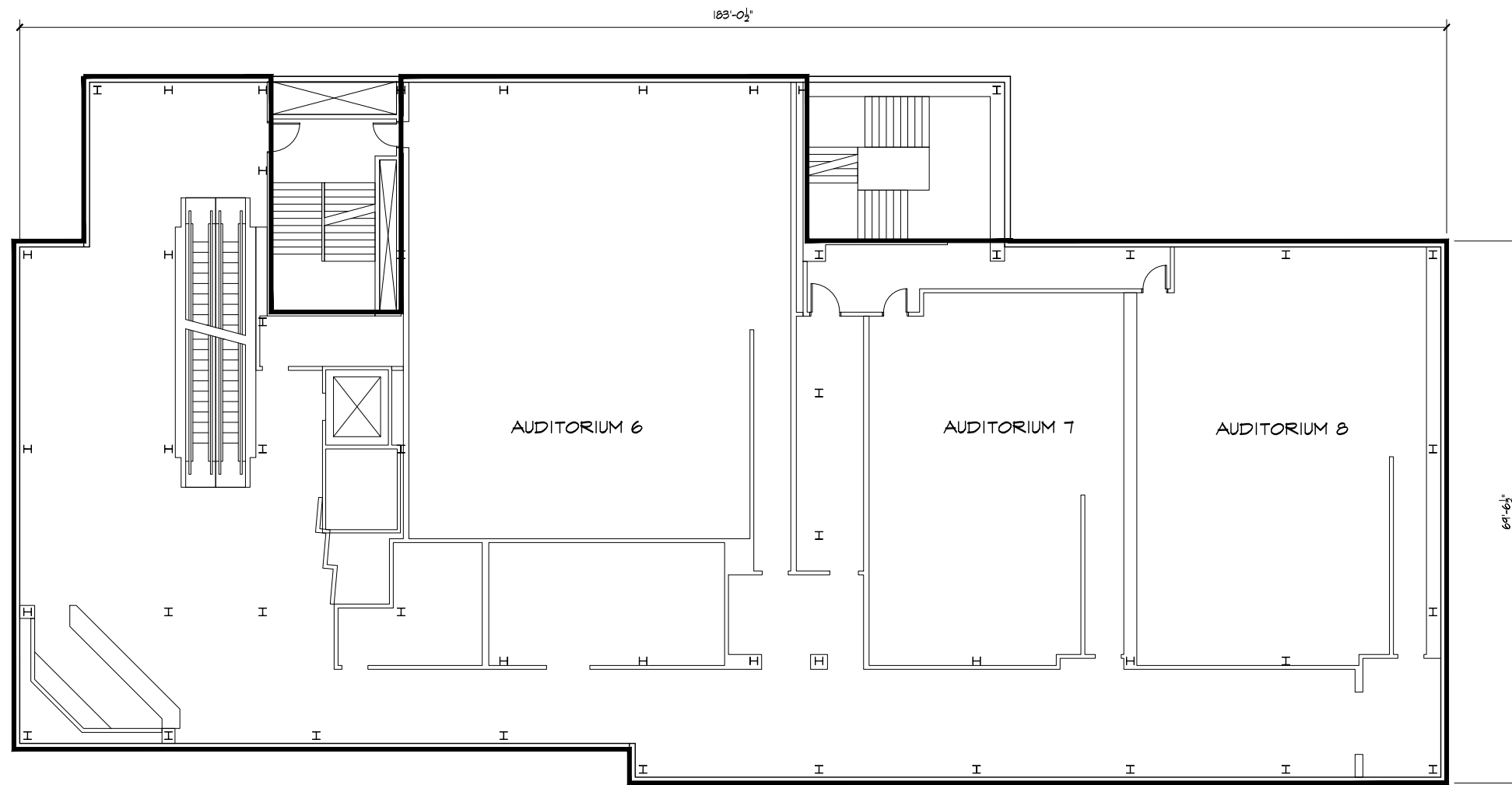


NTS

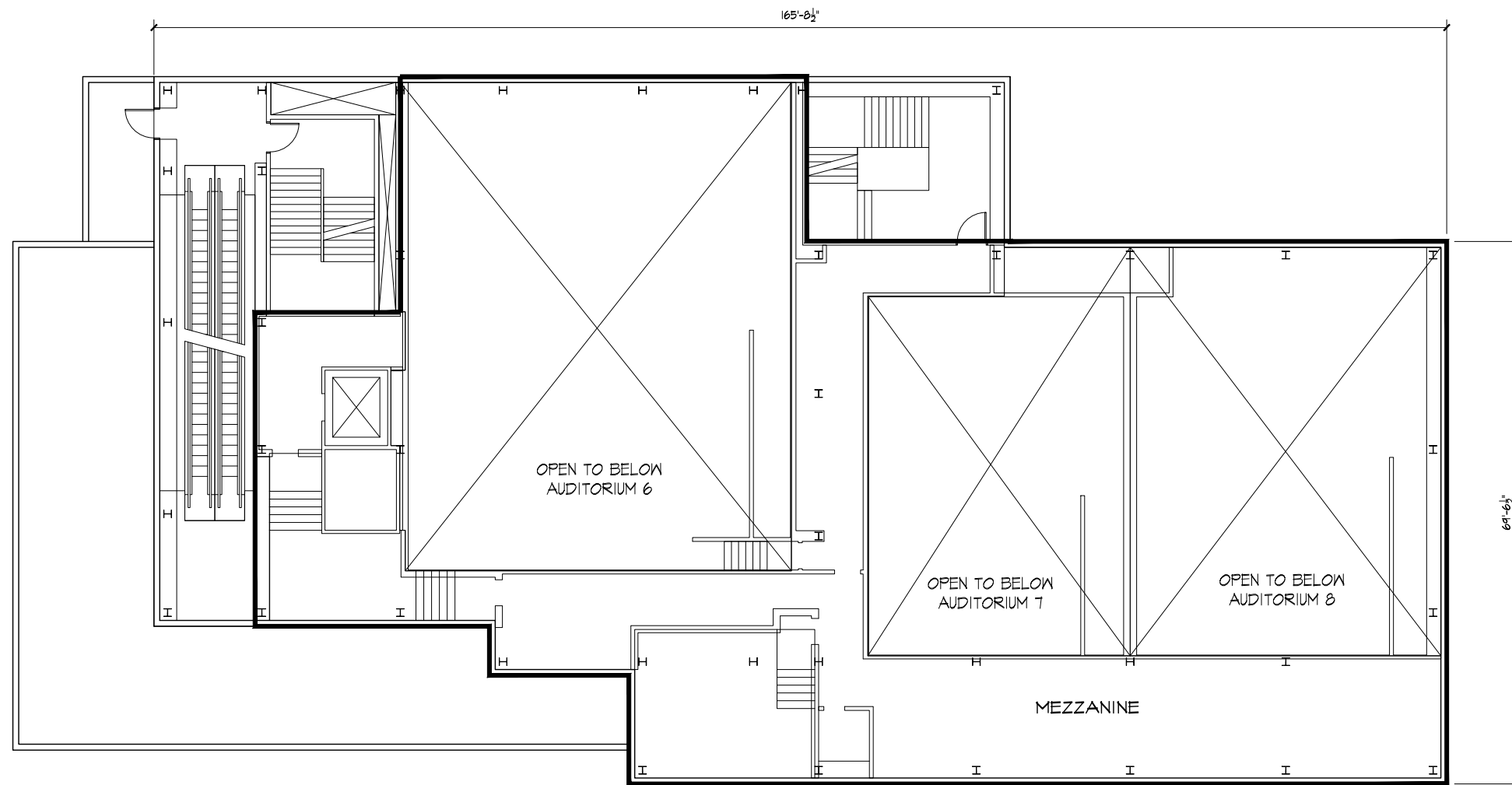




NTS



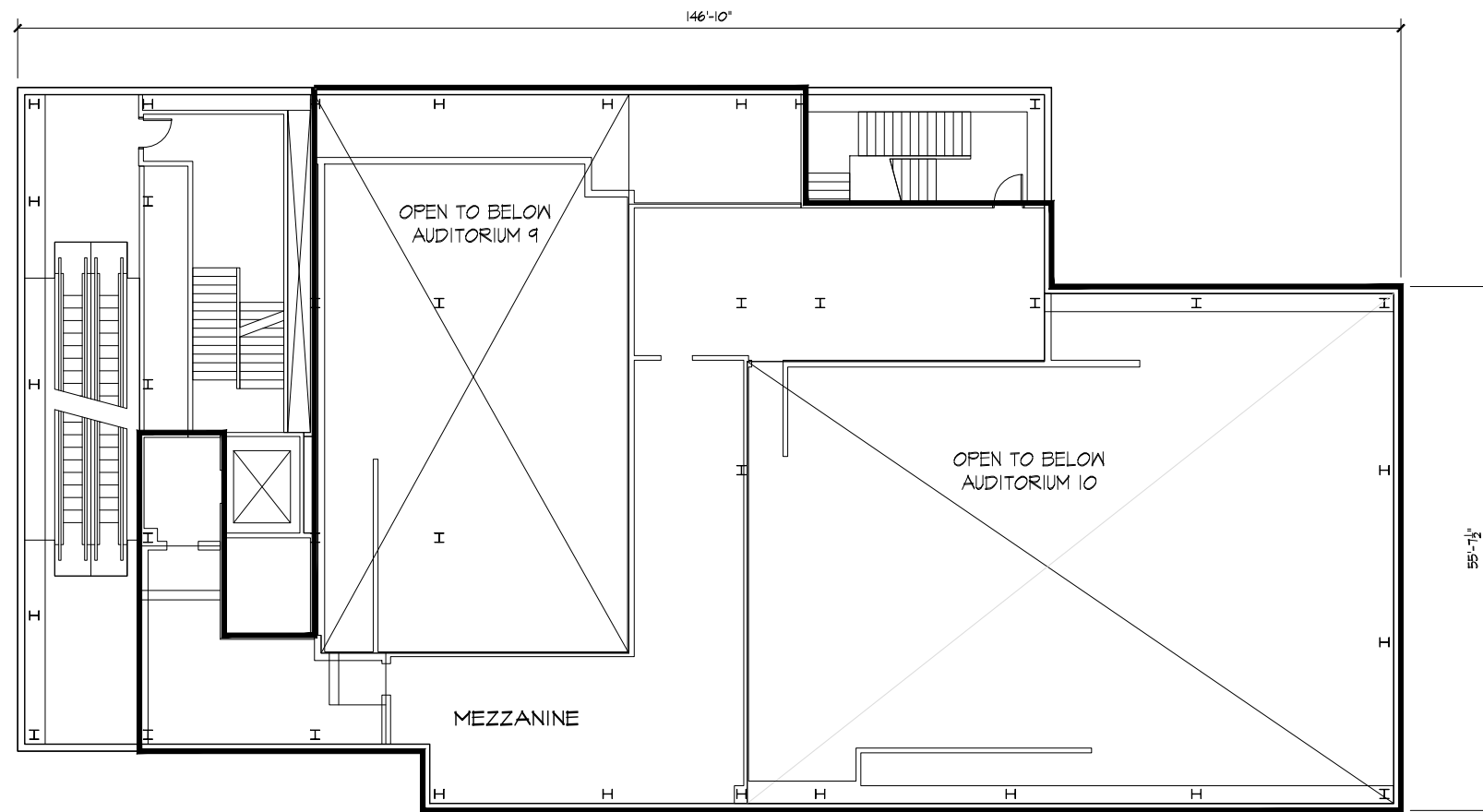
NTS



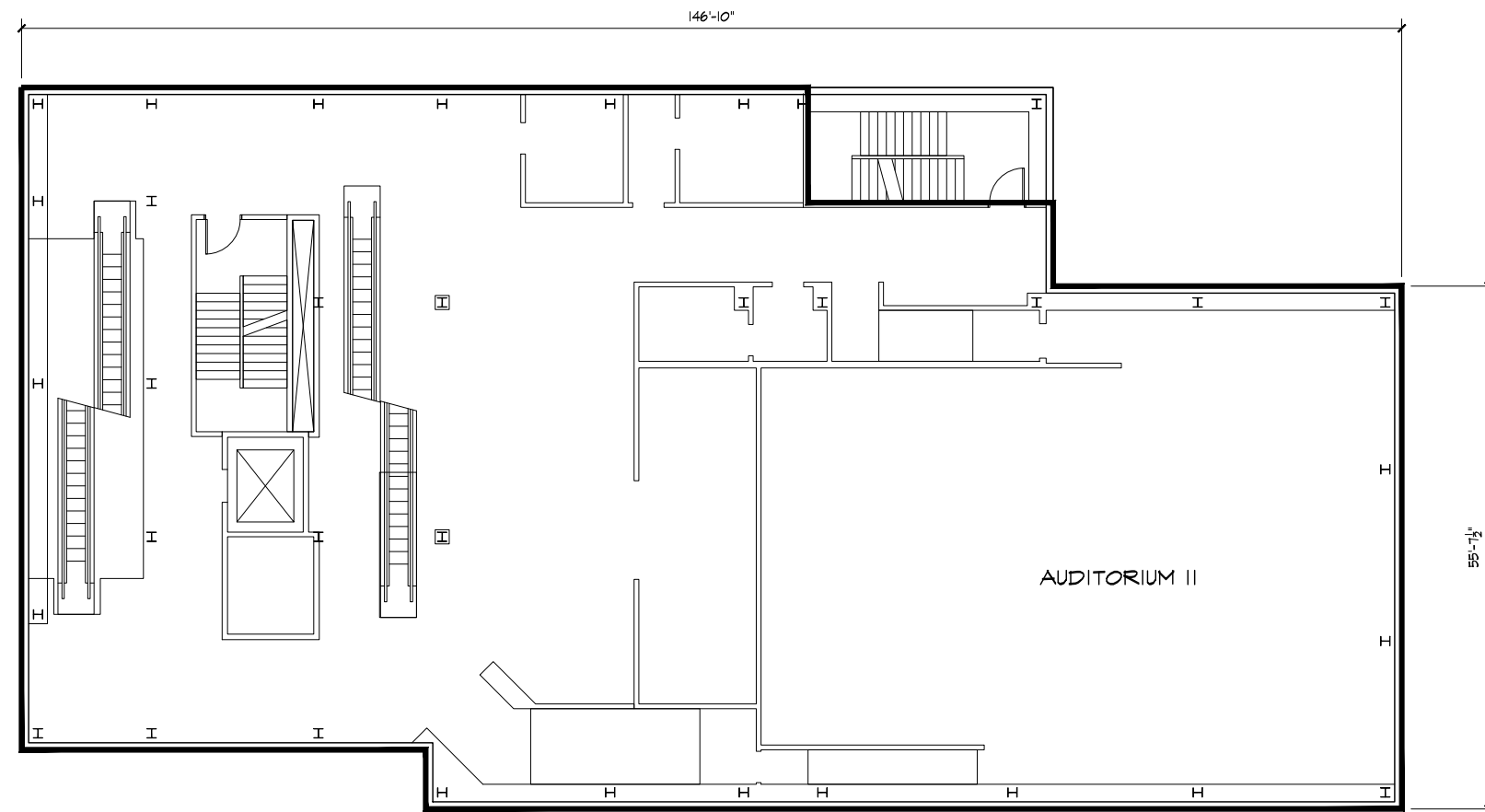
NTS

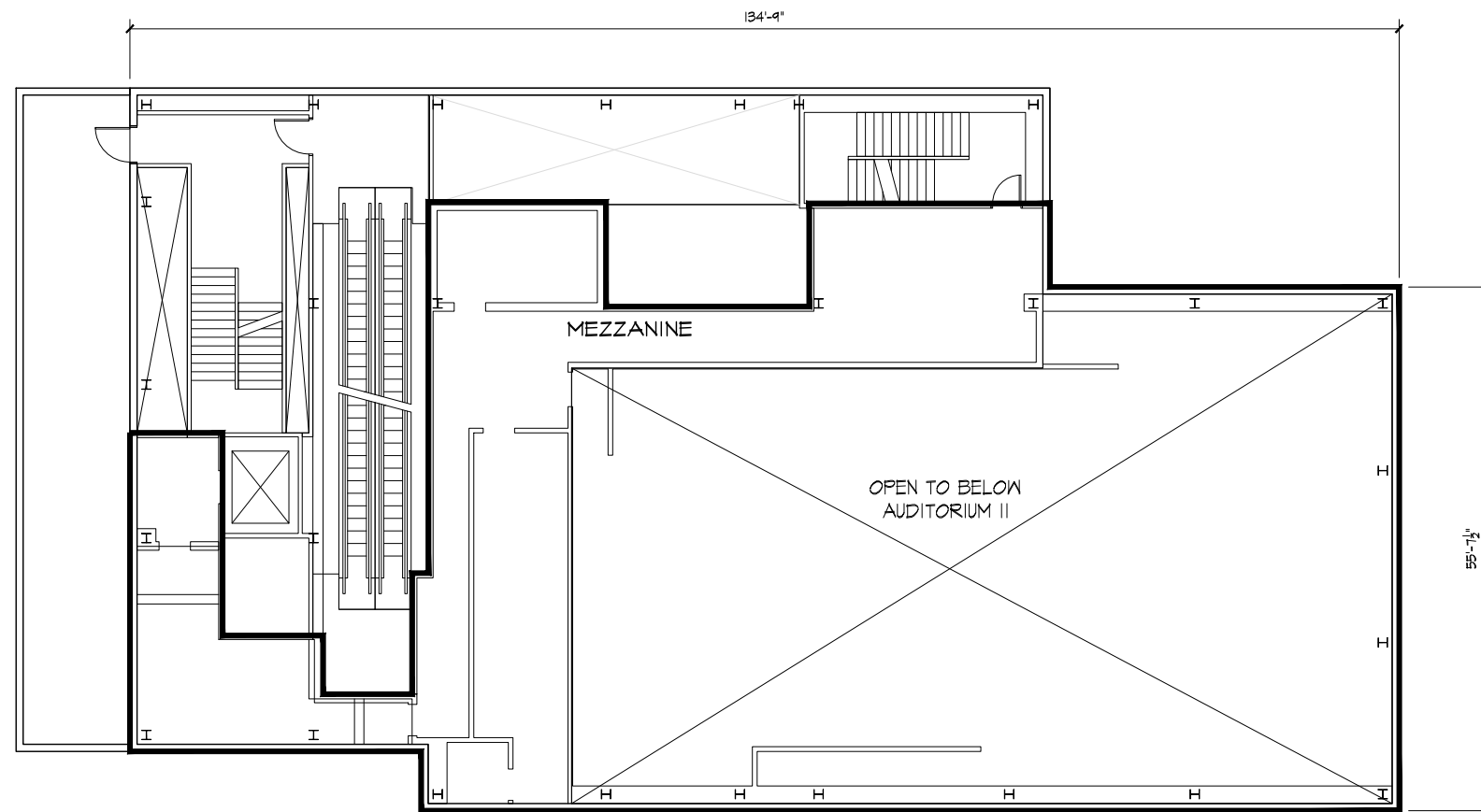


NTS

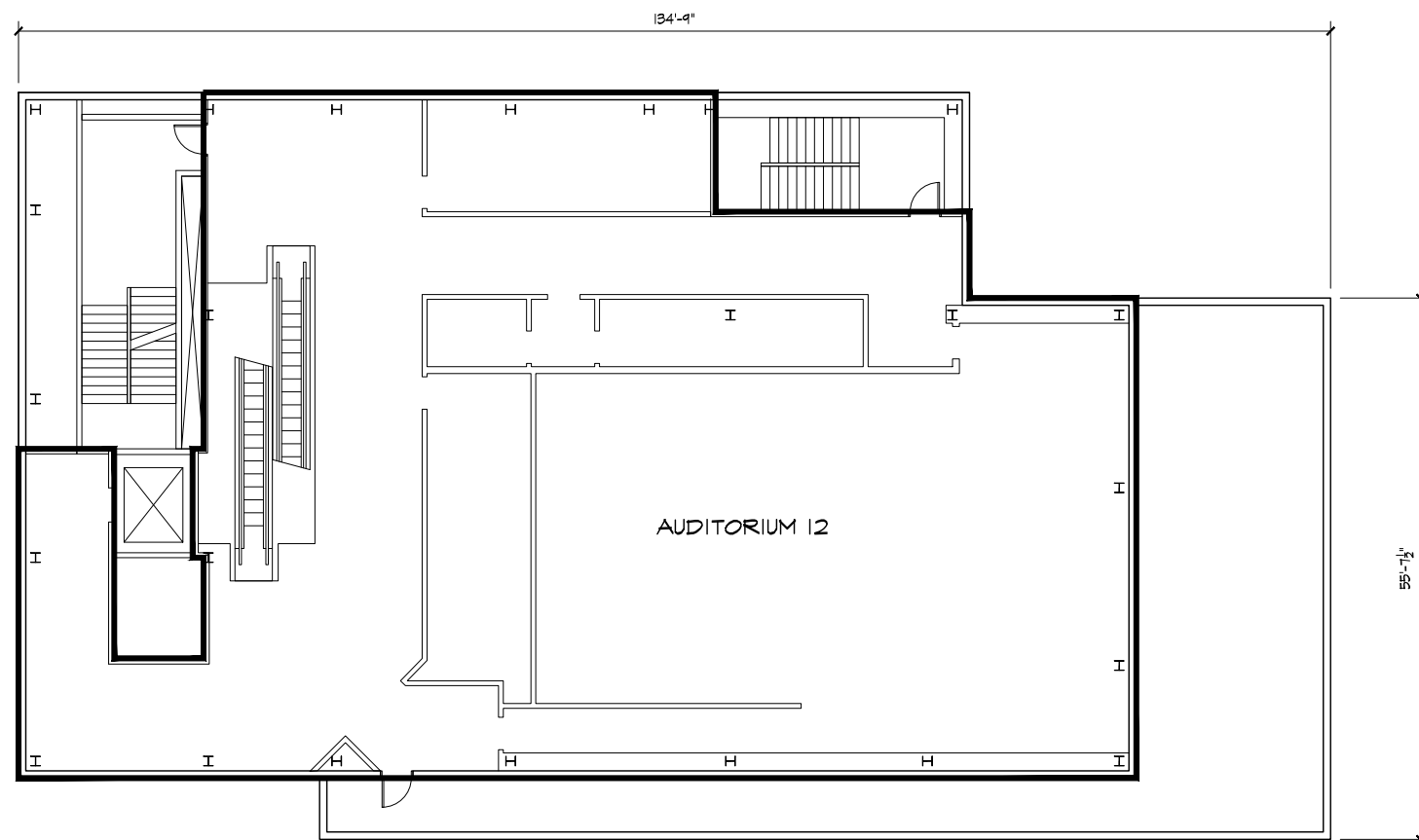


NTS

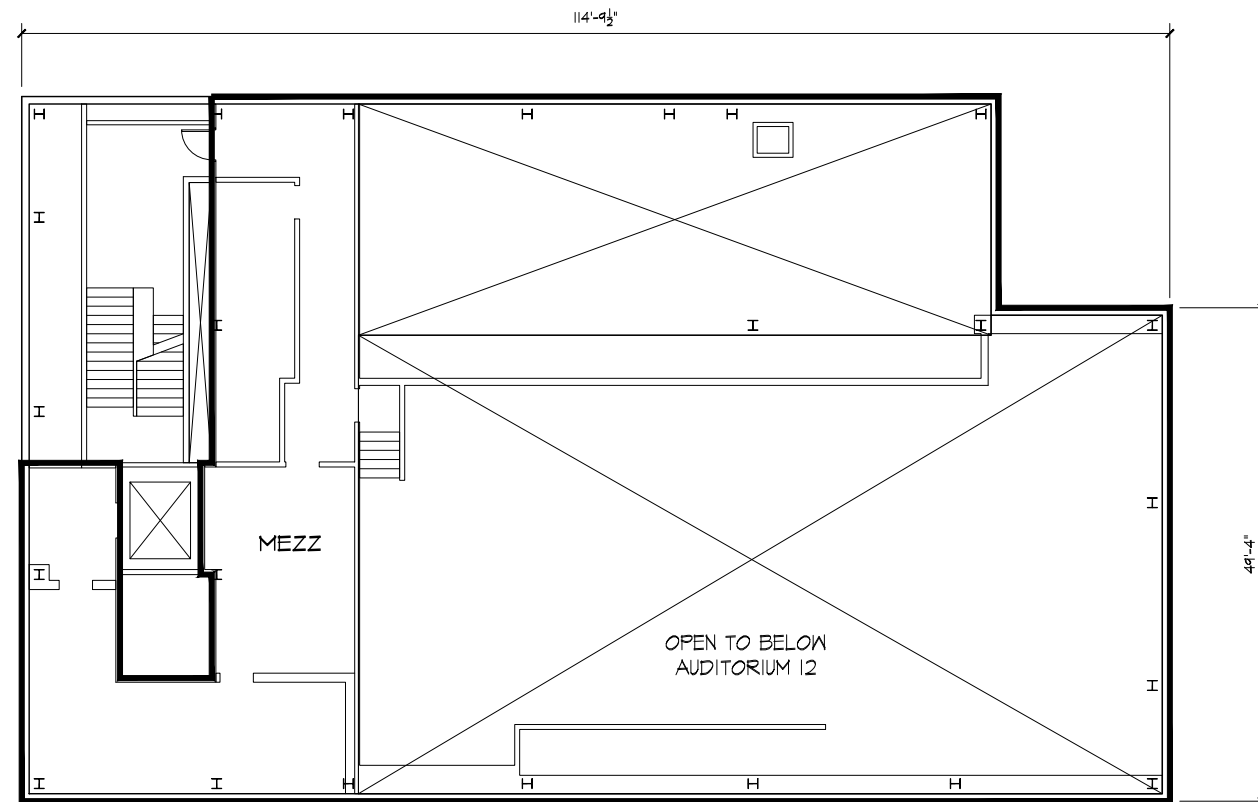




NTS









**DIANA D. BOUTROSS**  
EXECUTIVE MANAGING DIRECTOR  
212.841.5097  
DIANA.BOUTROSS@CUSHWAKE.COM

**IAN LERNER**  
SENIOR DIRECTOR  
212.841.5948  
IAN.LERNER@CUSHWAKE.COM

**ALAN SCHMERZLER**  
VICE CHAIRMAN  
212.841.5930  
ALAN.SCHMERZLER@CUSHWAKE.COM

**BRANDON L. SINGER**  
MANAGING DIRECTOR  
212.841.7837  
BRANDON.SINGER@CUSHWAKE.COM

A commission computed and earned in accordance with the rates and conditions of our agency agreement with our Principal, when received from our Principal, will be paid to the cooperating broker who consummates a lease which is unconditionally executed and delivered by and between lessor and lessee (a copy of the rates and conditions referred to above is available upon request). The depiction in the above photograph of any person, entity, sign, logo, or property (other than Cushman & Wakefield's client and the property offered by Cushman & Wakefield) is incidental only, and is not intended to connote any affiliation, connection, association, sponsorship, or approval by or between that which is incidentally depicted by Cushman & Wakefield or its client.