



8285 Tom Dr

Baton Rouge, Louisiana 70815

Property Description

A 2,584 Sf Building that includes a large showroom with two offices and a conference room.

Location Description

Located on Tom Dr. this property provides easy access to Airline Highway and Florida Boulevard.

Demographics

	1 Mile	3 Miles	5 Miles
Total Households	2,882	28,072	78,870
Total Population	7,361	72,339	201,158
Average HH Income	\$47,234	\$52,752	\$57,251



For more information

Grey Hammett III

O: 225 295 0800 | C: 225 588 4343
grey@latterblum.com

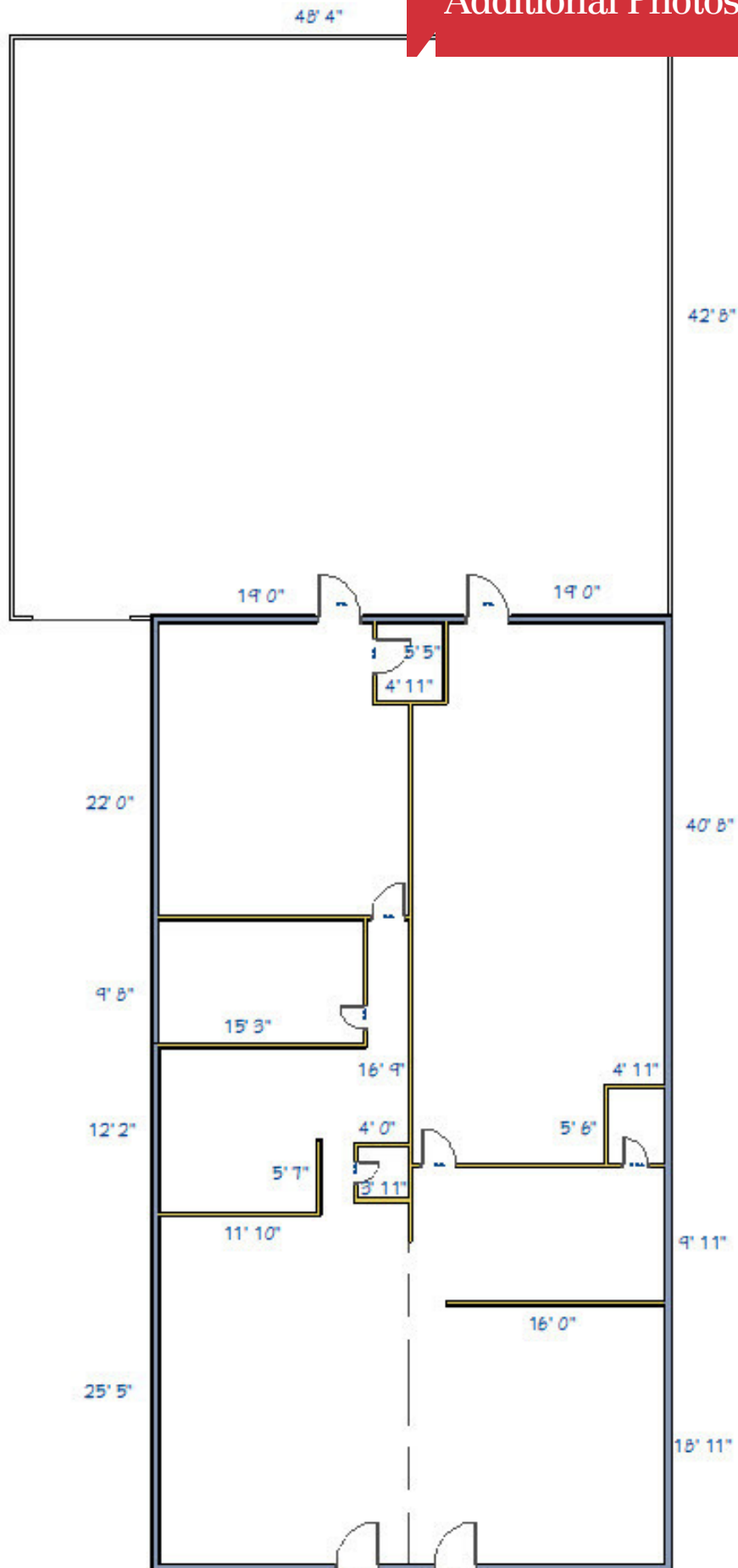
Parker Cavin

O: 225 295 0800 | C: 225 888 4030
pcavin@latterblum.com

CALL OR EMAIL FOR MORE INFORMATION

NO WARRANTY OR REPRESENTATION, EXPRESS OR IMPLIED, IS MADE AS TO THE ACCURACY OF THE INFORMATION CONTAINED HEREIN, AND THE SAME IS SUBMITTED SUBJECT TO ERRORS, OMISSIONS, CHANGE OF PRICE, RENTAL OR OTHER CONDITIONS, PRIOR SALE, LEASE OR FINANCING, OR WITHDRAWAL WITHOUT NOTICE, AND OF ANY SPECIAL LISTING CONDITIONS IMPOSED BY OUR PRINCIPALS NO WARRANTIES OR REPRESENTATIONS ARE MADE AS TO THE CONDITION OF THE PROPERTY OR ANY HAZARDS CONTAINED THEREIN ARE ANY TO BE IMPLIED. LICENSED IN LOUISIANA.

1700 City Farm Drive
Baton Rouge, LA 70806
225 295 0800 tel
latterblum.com



Location Maps

