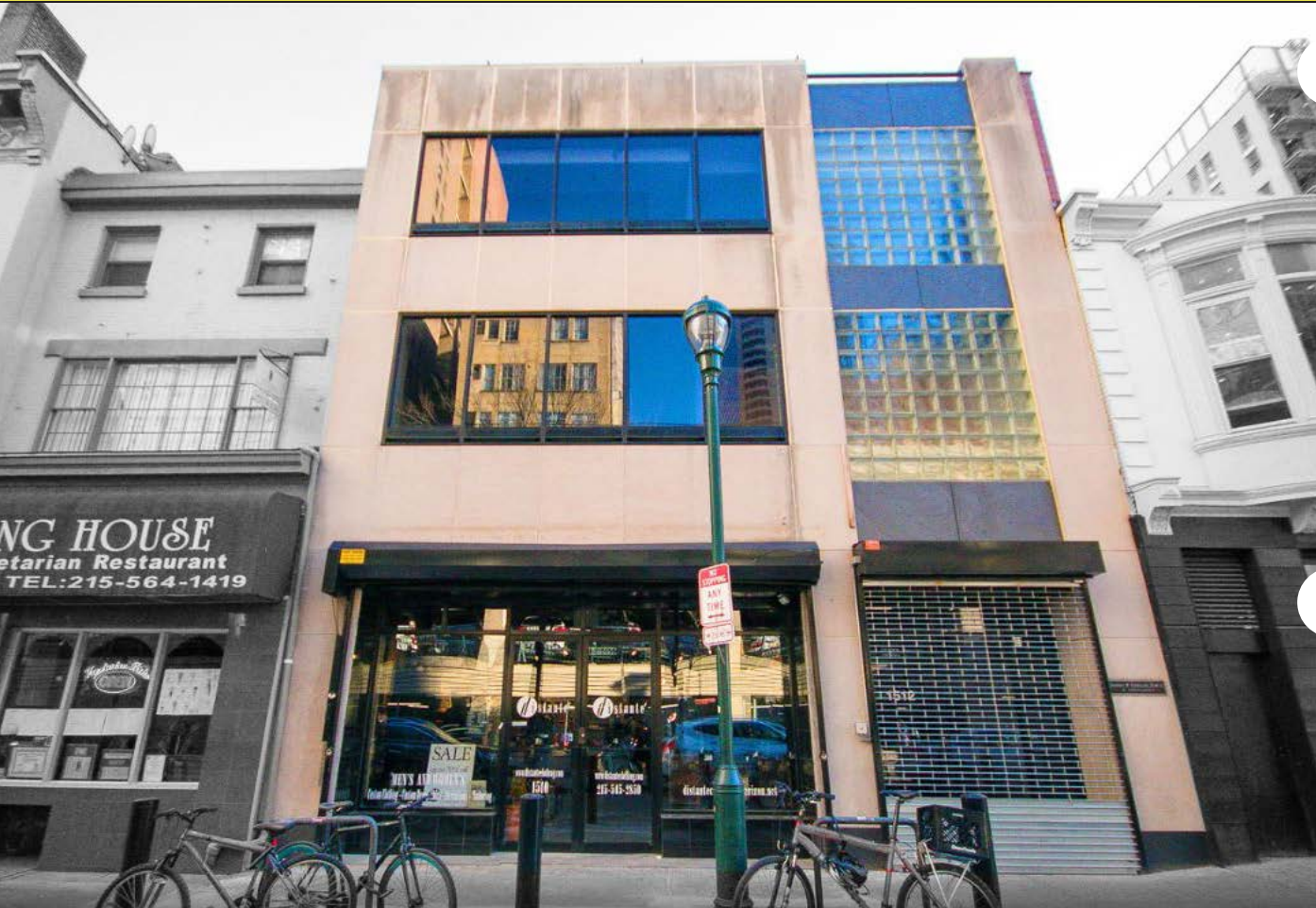


1510 -1512 SANSOM STREET

PHILADELPHIA, PA

±1,643 SF AVAILABLE SECOND FLOOR OFFICE SPACE FOR LEASE

JOIN



property highlights.

- In the heart of the Central business District of Philadelphia
- Second floor opportunity
- Large windows facing front of Sansom Street
- ADA Accessible space
- Elevator building with lobby area
- Seeking office tenant, nail/hair salon, low-impact fitness

stats.

2018 DEMOGRAPHICS*	0.25 MILE	0.5 MILES	0.75 MILES
EST. POPULATION	7,840	30,372	62,803
EST. HOUSEHOLDS	4,835	19,540	37,133
EST. AVG. HH INCOME	\$128,452	\$115,878	\$115,382



METRO[®]
COMMERCIAL
REAL ESTATE, INC.

MetroCommercial.com | PHILADELPHIA, PA | PLYMOUTH MEETING, PA | MOUNT LAUREL, NJ | NAPLES, FL

get in touch.

JONATHAN SPOERL

office 215.893.0300
direct 215.282.0157
jspoerl@metrocommercial.com

SHANE HART

office 215.893.0300
direct 215.282.0151
shart@metrocommercial.com



COMCAST TECHNOLOGY CENTER

- 1,121 FEET TALL
- 59-STORY TOWER
- APPROXIMATELY 1,517 MILLION RENTABLE SQUARE FEET, INCLUDING 1,285 MILLION RENTABLE SQUARE FEET OF OFFICE SPACE, 230,112 SQUARE FEET OF HOTEL SPACE AND 2,682 RENTABLE SQUARE FEET OF RETAIL SPACE

FOUR SEASONS Hotels and Resorts
 vernick fish Sean-Georges

Wawa Starbucks CRISP KITCHEN

EVERYBODY FIGHTS TD Bank

CVS pharmacy
 Naf Naf Grill
 FALAFEL • SHAWARMA • KABABS

chima
 Brazilian Steakhouses

RUTH'S CHRIS STEAK HOUSE
 SONESTA

REAL FOOD EATERY

THE SHOPS at Liberty Place

W Hotels element by WESTIN

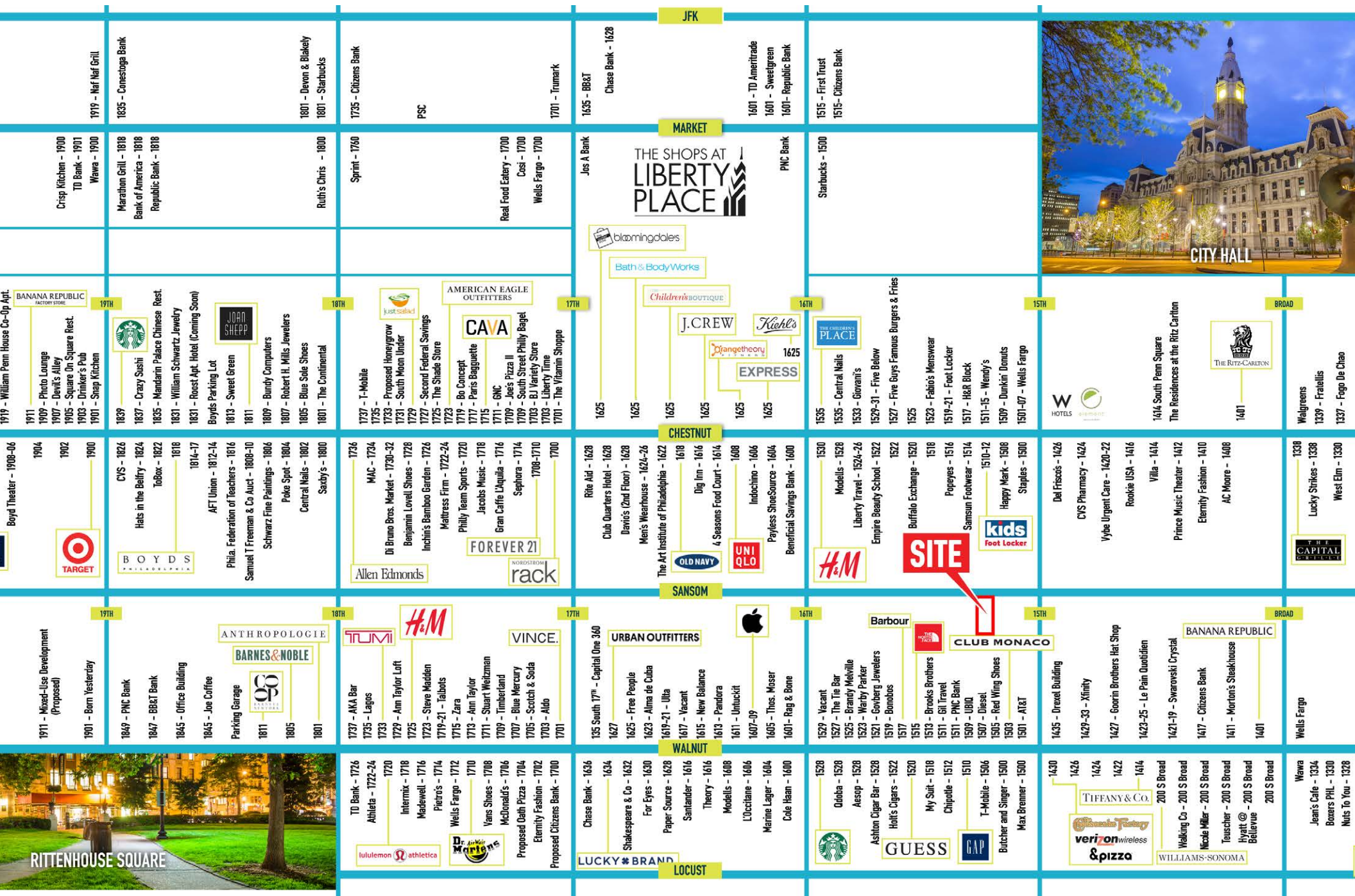
PROPOSED
 ★ PRET A MANGER ★



1510 - 1512 SANSON STREET
 PHILADELPHIA, PA



The information and images contained herein are from sources deemed reliable. However, Metro Commercial Real Estate, Inc. makes no representation whatsoever as to their accuracy or authenticity. Images shown may be modified for illustrative purposes. Images may be out-of-date and not current. 10.30.19



1510 - 1512 SANSOM STREET PHILADELPHIA, PA

The information and images contained herein are from sources deemed reliable. However, Metro Commercial Real Estate, Inc. makes no representation whatsoever as to their accuracy or authenticity. Images shown may be modified for illustrative purposes. Images may be out-of-date and not current. 10.30.19