

Cadillac Industrial Park

1123 Cadillac Court, Milpitas, CA



FEATURES

- ±10,965 SF
- Great Visibility Front Unit
- Building and Monument Signage Available
- ±40% Office, Balance is Manufacturing/Warehouse
- 2 Dock High and 1 Grade Level Doors
- ±18'-21' Clear Height
- ±1,200 Amps @ 277/480 Volt, 3-Phase, 4-Wire
- 3.71/1,000 SF parking
- Excellent Access to Interstate 880
- Available Nov. 2019!

*All information subject to verification



OWNED AND OPERATED BY

PSBUSINESSPARKS

www.psbusinessparks.com

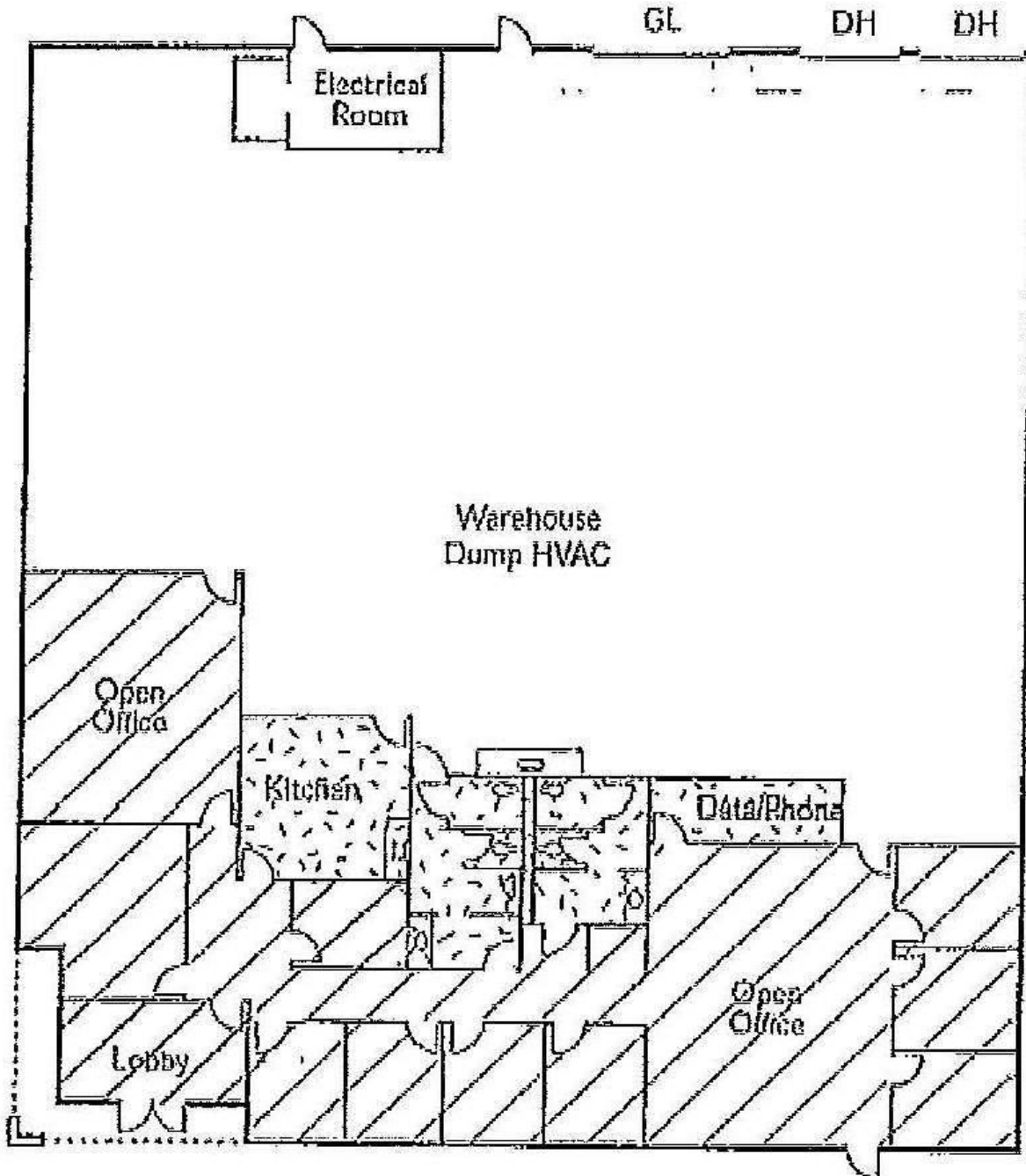
FOR LEASING CONTACT:
408-453-9921

KEVIN LAZZINI
klazzini@psbusinessparks.com

Cadillac Industrial Park

1123 Cadillac Court, Milpitas, CA

Floor Plan:



*All information subject to verification



OWNED AND OPERATED BY

PSBUSINESSPARKS

www.psbusinessparks.com

FOR LEASING CONTACT:
408-453-9921

KEVIN LAZZINI
klazzini@psbusinessparks.com