

Troon North Office Available

±6,722 SF

SUBJECT

For Sale: \$1,680,500 (\$250/SF)
For Lease: \$23/SF (NNN)

10045 E Dynamite Blvd, Suite 235-260
Scottsdale, Arizona 85262

NAIHorizon

2944 N 44th St, Suite 200, Phoenix, Arizona

+1 602 955 4000

naihorizon.com

NO WARRANTY OR REPRESENTATION, EXPRESS OR IMPLIED, IS MADE AS TO THE ACCURACY OF THE INFORMATION CONTAINED HEREIN, AND THE SAME IS SUBMITTED SUBJECT TO ERRORS, OMISSIONS, CHANGE OF PRICE, RENTAL OR OTHER CONDITIONS, PRIOR SALE, LEASE OR FINANCING, OR WITHDRAWAL WITHOUT NOTICE, AND OF ANY SPECIAL LISTING CONDITIONS IMPOSED BY OUR PRINCIPALS NO WARRANTIES OR REPRESENTATIONS ARE MADE AS TO THE CONDITION OF THE PROPERTY OR ANY HAZARDS CONTAINED THEREIN

For more information:

Laurel Lewis

+1 602 393 6656

laurel.lewis@naihorizon.com

Dylan Whitwer

+1 602 393 6609

dylan.whitwer@naihorizon.com

10045 E Dynamite Blvd, Suites 235-260

Property & Location Highlights

- ±6,722 SF beautifully built-out office space
- Exposed, industrial-look ceilings
- Open floor plan includes reception/waiting area, multiple private offices, full kitchenette
- Barn doors on private offices
- Build-out could support traditional office or medical use
- Expansive views of surrounding mountains from suite
- Located in the area of the affluent Troon North Golf Club, numerous golf courses and luxury houses
- Near amenities in Cave Creek, Carefree, Desert Ridge and North Scottsdale
- 600+ new home permits in the vicinity
- Numerous hiking trails within driving distance



For Sale: \$1,680,500 (\$250/SF)
For Lease: \$23/SF (NNN)

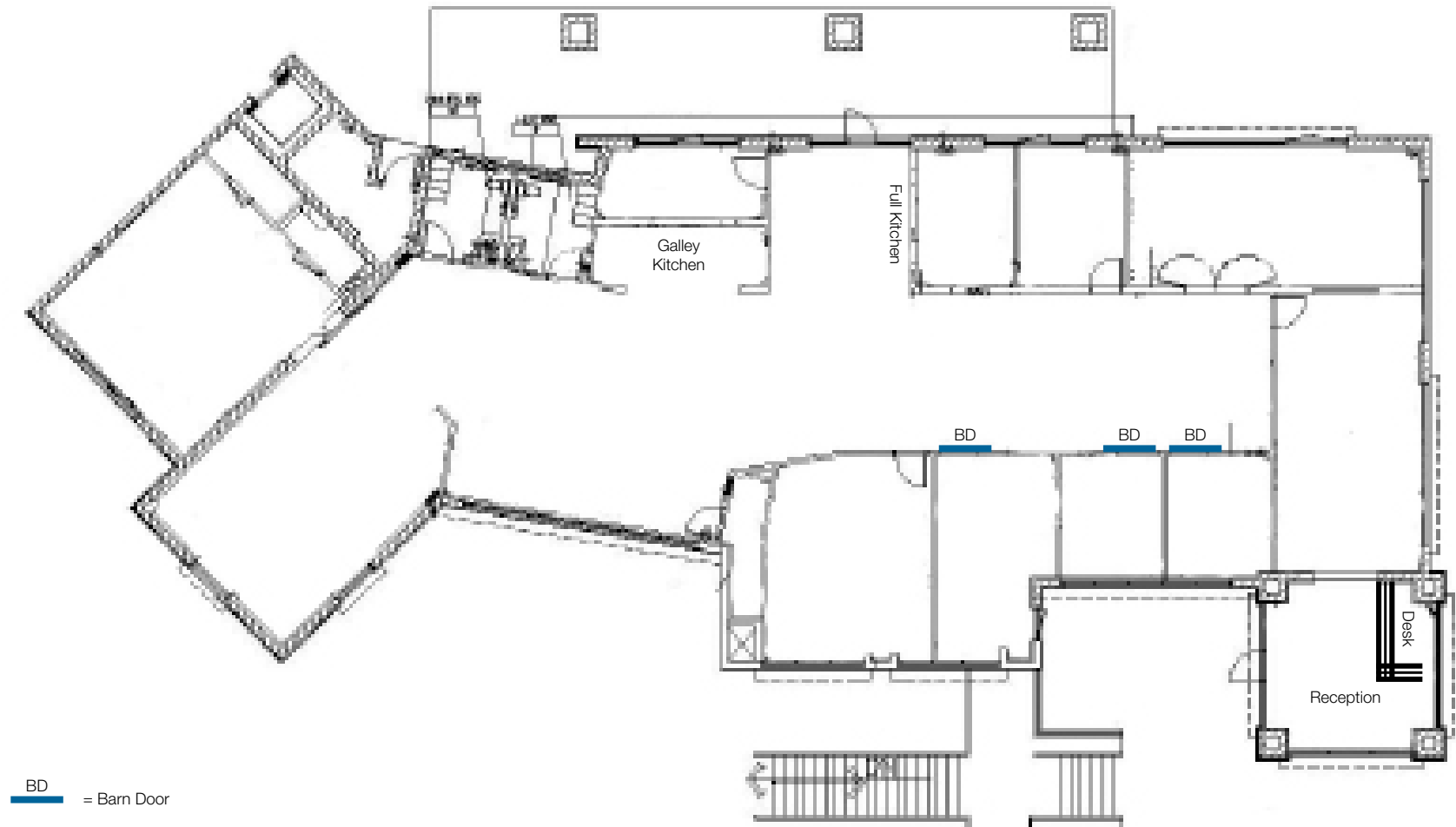
Laurel Lewis
+1 602 393 6656
laurel.lewis@naihorizon.com

Dylan Whitwer
+1 602 393 6609
dylan.whitwer@naihorizon.com

NAIHorizon

10045 E Dynamite Blvd, Suites 235-260

Floor Plan



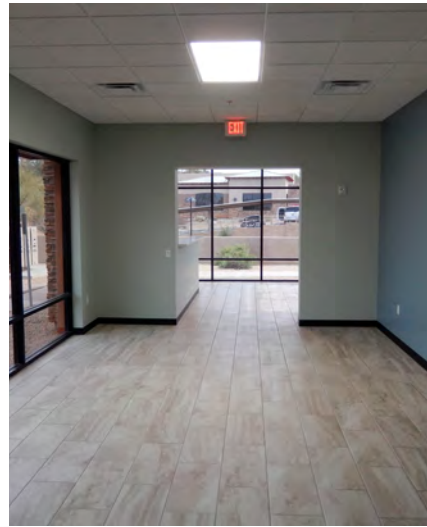
Laurel Lewis
+1 602 393 6656
laurel.lewis@naihorizon.com

Dylan Whitwer
+1 602 393 6609
dylan.whitwer@naihorizon.com

NAIHorizon

10045 E Dynamite Blvd, Suites 235-260

Property Photos



Laurel Lewis
+1 602 393 6656
laurel.lewis@naihorizon.com

Dylan Whitwer
+1 602 393 6609
dylan.whitwer@naihorizon.com

NAIHorizon

10045 E Dynamite Blvd, Suites 235-260

Property Photos



Laurel Lewis
+1 602 393 6656
laurel.lewis@naihorizon.com

Dylan Whitwer
+1 602 393 6609
dylan.whitwer@naihorizon.com

NAIHorizon

10045 E Dynamite Blvd, Suites 235-260

Property Aerial



Laurel Lewis
+1 602 393 6656
laurel.lewis@naihorizon.com

Dylan Whitwer
+1 602 393 6609
dylan.whitwer@naihorizon.com

NAIHorizon