

FOR LEASE

# WORLDS FAIR CORPORATE CENTER

20

WORLDS FAIR DRIVE – UNIT E & F  
Somerset, NJ



## SPECIFICATIONS

Available space:	±10,000 RSF
Warehouse size:	±5,500 RSF
Office size:	±4,500 RSF
Year built:	1999
Ceiling height:	18'
Loading:	2 loading docks
Power:	200 amps
Sprinkler:	Wet



## CONTACT US

### MINDY LISSNER, SIOR

Executive Vice President  
+1 732 509 2831  
mindy.lissner@cbre.com

### ROBERT PINE

Vice President  
+1 732 509 2830  
robert.pine@cbre.com

### DAVID GHERIANI

First Vice President  
+1 732 509 8942  
david.gheriani@cbre.com

[www.cbre.com](http://www.cbre.com)

**CBRE**

**FIRST**  
INDUSTRIAL  
REALTY TRUST

# FOR LEASE WORLDS FAIR CORPORATE CENTER

20  
WORLDS FAIR DRIVE – UNITS E & F  
Somerset, NJ

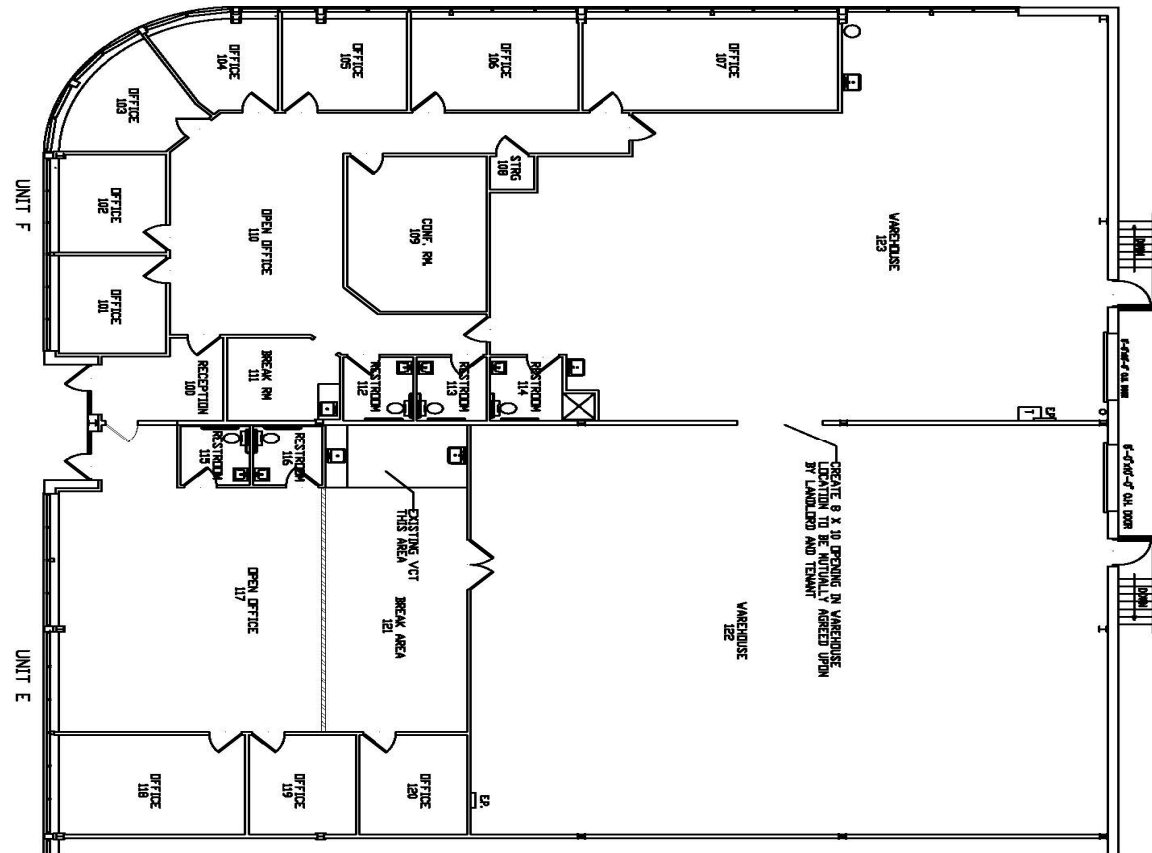


## FLOOR PLAN

- + Units E & F: ±10,000 RSF available
- + Office: ±4,500 RSF
- + Warehouse: ±5,500 RSF
- + Rental Rate: \$10.50 NNN PSF

## COMMENTS

- + 1 per 1,000 car parking
- + Available: June 2020
- + Access to I-287, Route 27, New Jersey Turnpike and the Garden State Parkway



© 2020 CBRE, Inc. All rights reserved. This information has been obtained from sources believed reliable, but has not been verified for accuracy or completeness. You should conduct a careful, independent investigation of the property and verify all information. Any reliance on this information is solely at your own risk. CBRE and the CBRE logo are service marks of CBRE, Inc. All other marks displayed on this document are the property of their respective owners. Photos herein are the property of their respective owners. Use of these images without the express written consent of the owner is prohibited.

