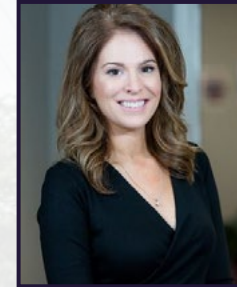




AGENT PROFILE



Maureen Anter-Ressler

INVESTMENT SUMMARY

| | |
|------------------------|----------------------|
| Sale Price: | \$240,000.00 |
| Square Footage: | 1,680 SF |
| Year Built: | 1950 |
| County | Cuyahoga |
| Acreage: | 0.31 Acres |
| Traffic Count: | 11,244 VPD |
| Parcel ID: | 67318006 67318007 |
| Zoning: | General Retail |

QUICK LINKS [\(click to view\)](#)

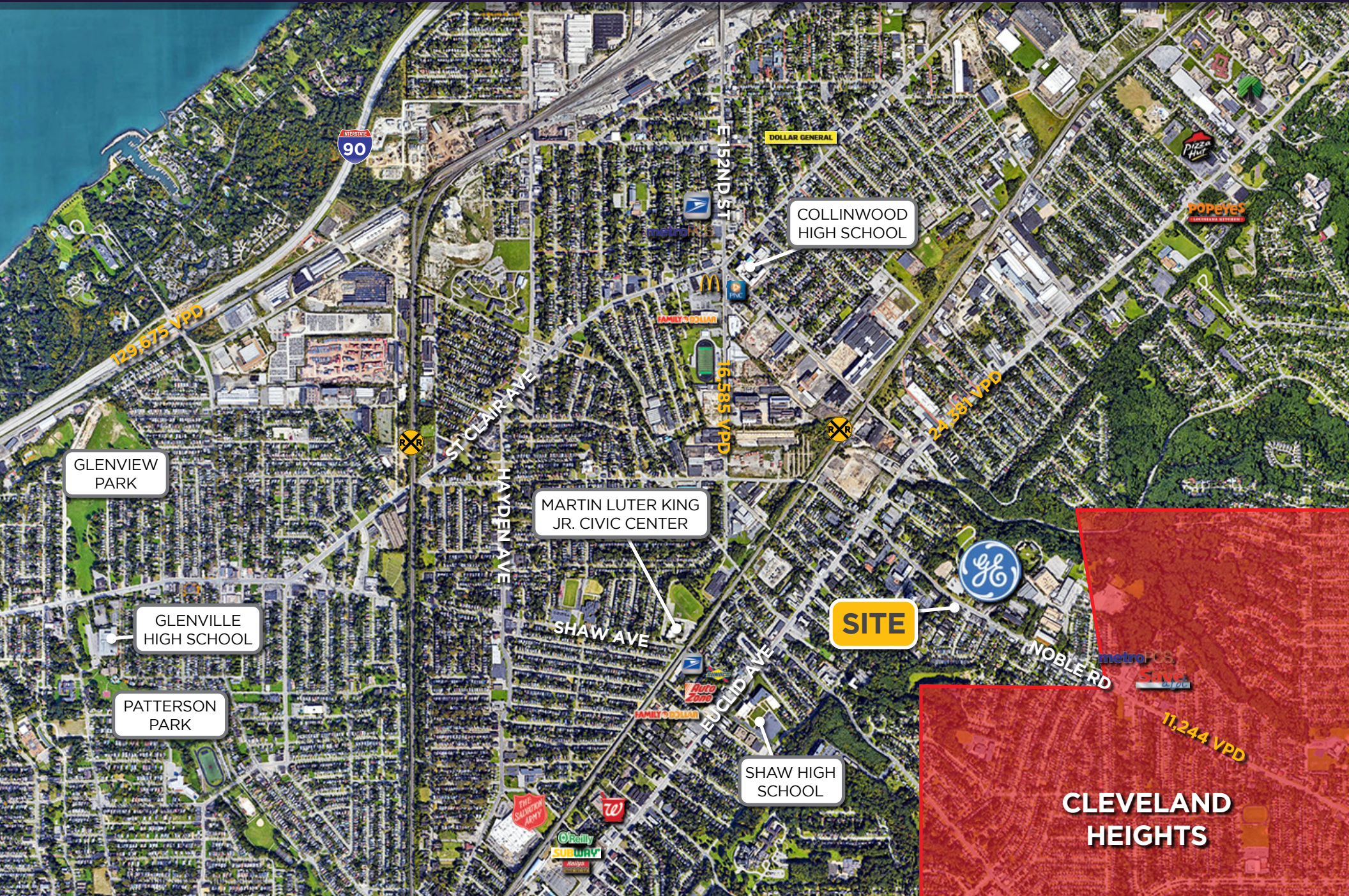


SITE



COLUMBO ROOM

NOBLE RD





Source: <https://www.ideastream.org/news/ge-to-sell-lighting-division-housed-at-nela-park>

SPECIFICATIONS

East Cleveland

- RTA Bus Line
- Daytime Employees:
 - One (1) Mile: 2,578
 - Three (3) Miles: 31,989
- Across the street from GE Lighting, The Lighting Institute, and The Cleveland STEM School. All location in the historic NELA Park (above)
- Population:
 - One (1) Mile: 15,609
 - Three (3) Miles: 139,349
- Vehicles Per Day: 10,167

BUSINESS INFORMATION

East Cleveland

- Four (4) pumps - Regular 87
- Includes FF&E
- Beer & Wine license
- Lottery
- Approved/Accept EBT
- ATM Revenue
- Locked-in low rate lease with 13-years remaining