

GATEWAY II



FOR LEASE

GATEWAY TWO

915 118th Avenue SE, Bellevue, WA

EXCLUSIVELY REPRESENTED BY

JOE LYNCH

Executive Managing Director
joe.lynch@ngkf.com
425.362.1399

DAN HARDEN

Senior Managing Director
dan.harden@ngkf.com
425.362.1393

Newmark Knight Frank
10900 NE 4th St, Suite 1430
Bellevue, WA 98004

ngkf.com



**NICOLA
CROSBY**
REAL ESTATE

The distributor of this communication is performing acts for which a real estate license is required. The information contained herein has been obtained from sources deemed reliable but has not been verified and no guarantee, warranty or representation, either express or implied, is made with respect to such information. Terms of sale or lease and availability are subject to change or withdrawal without notice.



GATEWAY II FACT SHEET

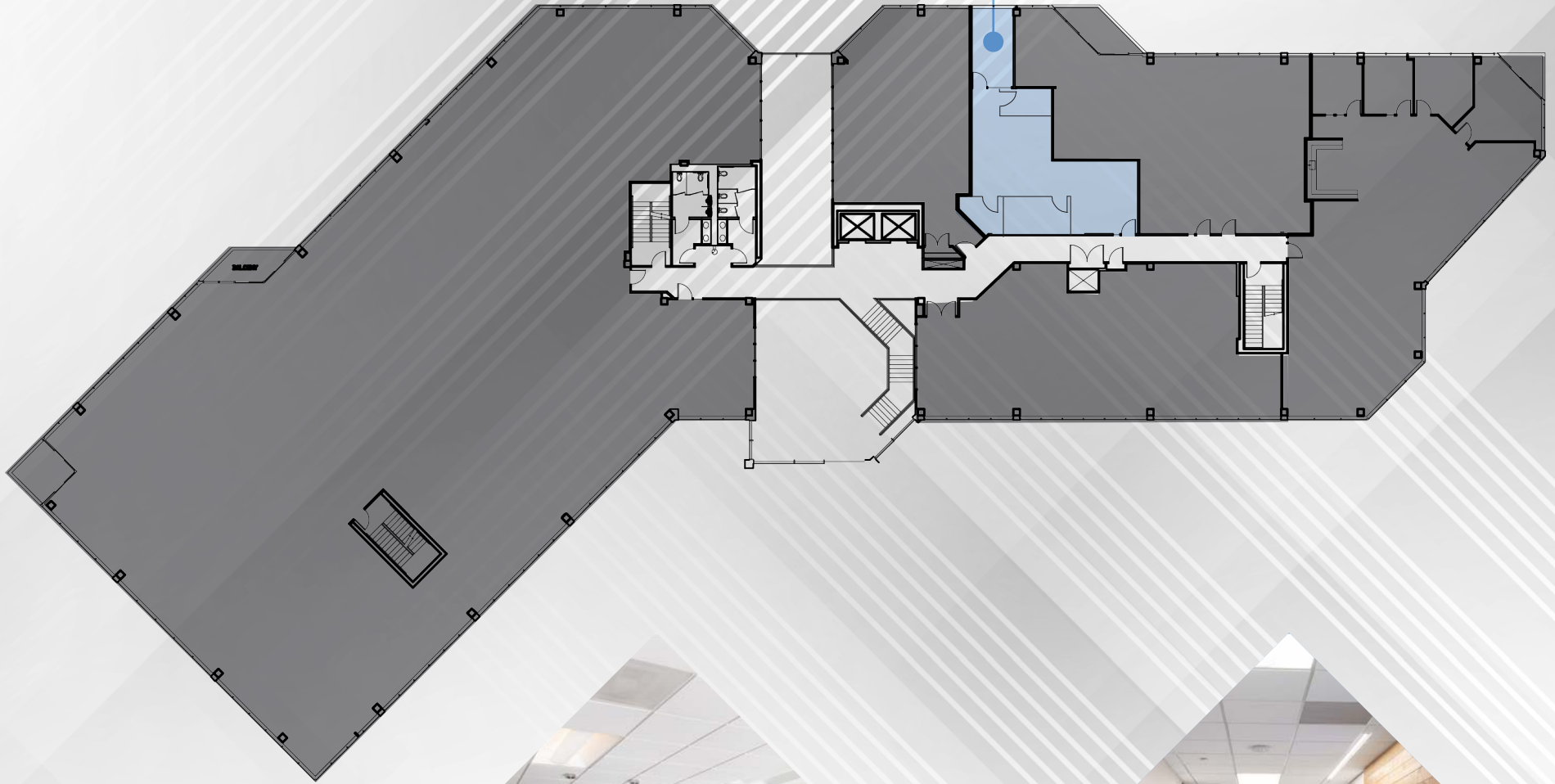
ADDRESS	915 118th Avenue SE, Bellevue, WA
BUILDING SIZE	68,776 SF
FLOORS	Three (3)
2020 ESTIMATED OPEX	\$11.86
PARKING RATIO	3.20/1,000 SF (Free surface parking, covered parking available, rate \$75.00/mo + WSST)
CABLE PROVIDERS	CenturyLink (Fiber Available) TW Telecom
BUILDING HOURS	24 hour access, 365 days per year. Building system operates from 7:00 am to 6:00 pm each weekday and from 8:00 am to 1:00 pm on Saturdays.
AMENITIES	Fitness Center (includes men's and women's showers/lockers) On-site Conference Facility Avanti Self Service Market
AVERAGE FLOOR PLATES	22,800 SF



FLOOR 2 - FULL FLOOR LAYOUT

SUITE 270

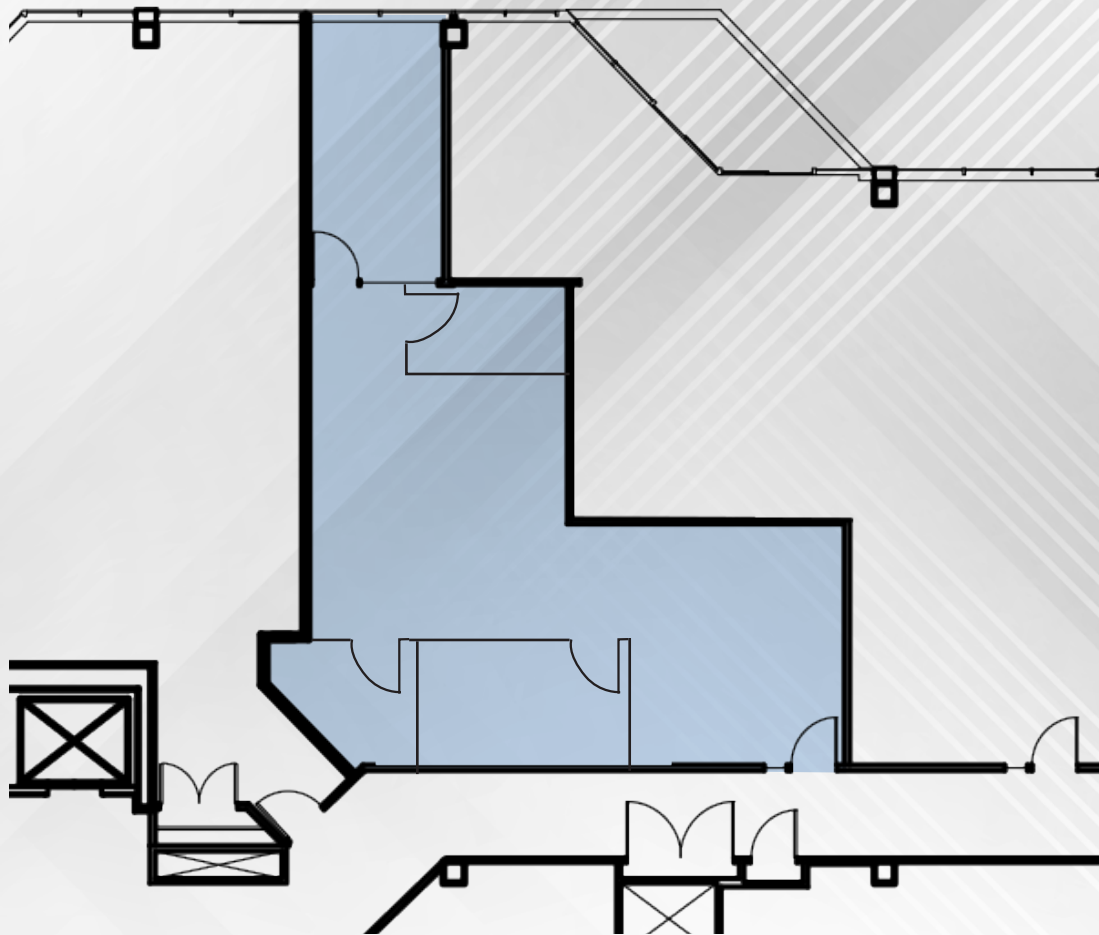
SUITE 270
1,157 RSF



FLOOR 2 - SUITE 270

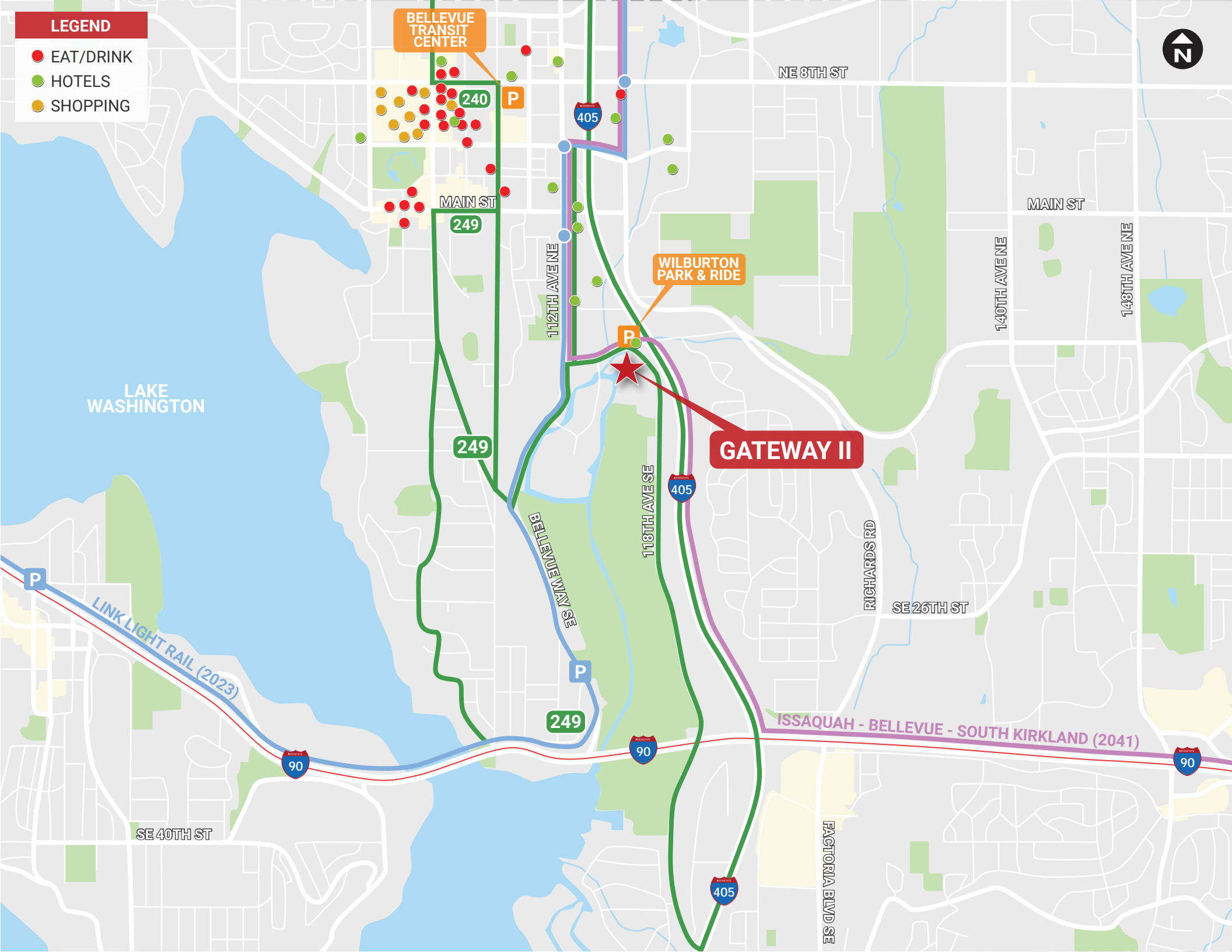
1,157 RSF

AVAILABLE NOW



LEGEND

- EAT/DRINK
- HOTELS
- SHOPPING





**Newmark
Knight Frank**

JOE LYNCH

Executive Managing Director
joe.lynch@ngkf.com
425.362.1399

DAN HARDEN

Senior Managing Director
dan.harden@ngkf.com
425.362.1393