

WARD PARKWAY PLAZA

85th Street at State Line Road & Ward Parkway, Kansas City, MO



RETAIL SPACE FOR LEASE | 2,100 SF SPACE

DEMOGRAPHICS

	1 mile	3 miles	5 miles
Estimated Population	9,656	92,474	232,326
Avg. Household Income	\$117,403	\$114,401	\$105,366

- Directly Across from newly redeveloped Ward Parkway Mall
- Just one block north of Ward Parkway Center which includes Target, Trader Joe's, 24 Hour Fitness, TJ Maxx, Home Goods, Pier 1 Imports, and many more
- Intersection carries over 60,000 cars per day

[CLICK HERE TO VIEW MORE LISTING INFORMATION](#)

For More Information Contact:

PHIL PECK, CCIM | 816.412.7364 | ppeck@blockandco.com

DAVID BLOCK | 816.412.7400 | dblock@blockandco.com

Exclusive Agents



WARD PARKWAY PLAZA

85th Street at State Line Road & Ward Parkway, Kansas City, MO

**IN-LINE RETAIL
SPACE AVAILABLE
FOR LEASE**

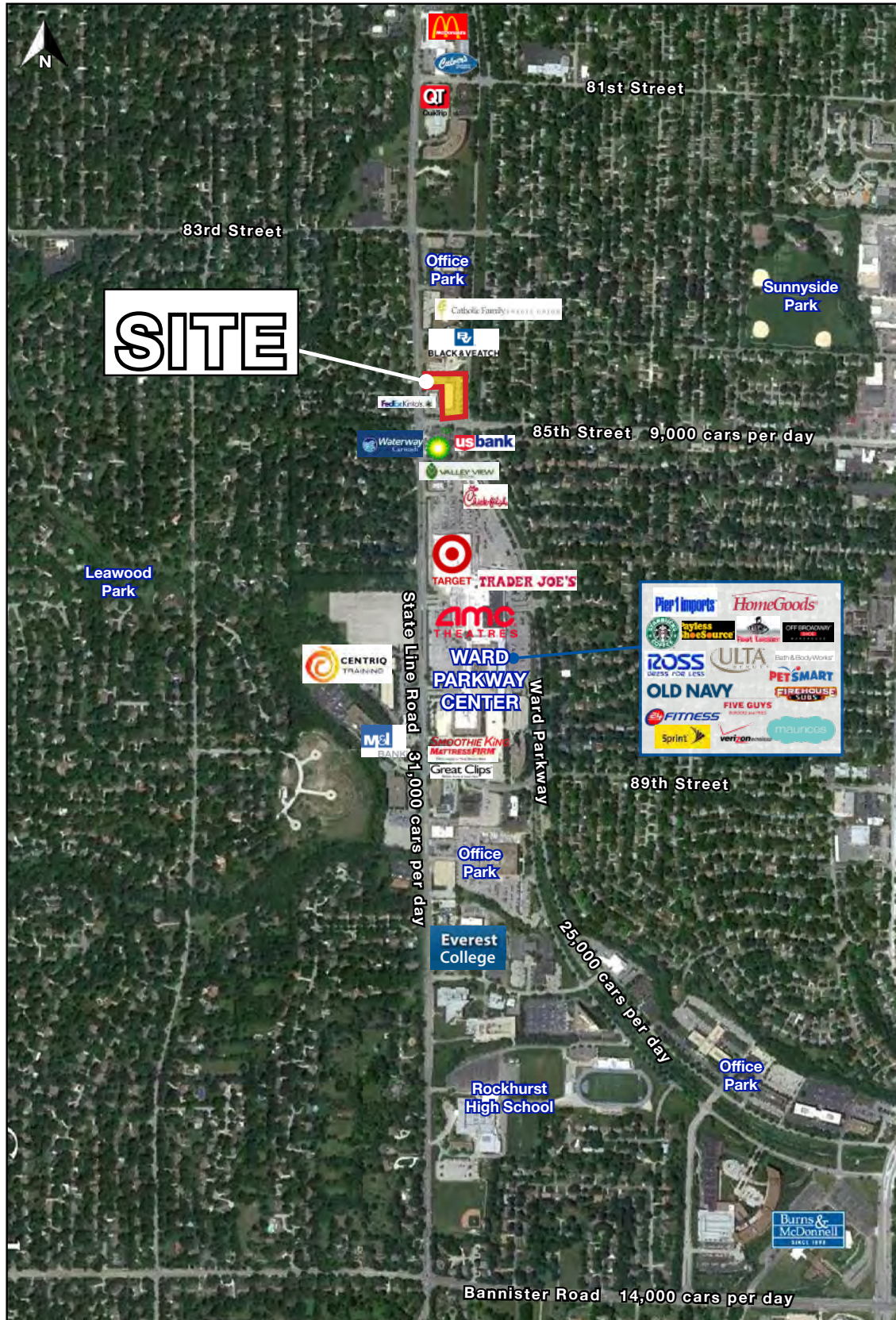
PROPERTY PHOTOS



WARD PARKWAY PLAZA

85th Street at State Line Road & Ward Parkway, Kansas City, MO

AERIAL



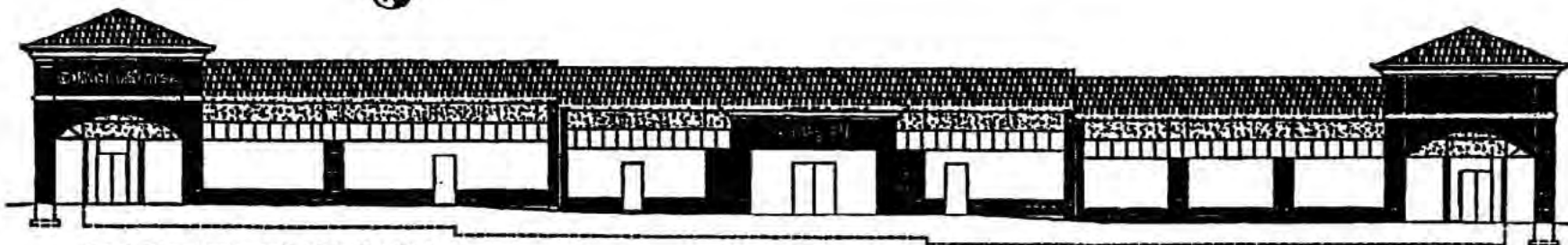
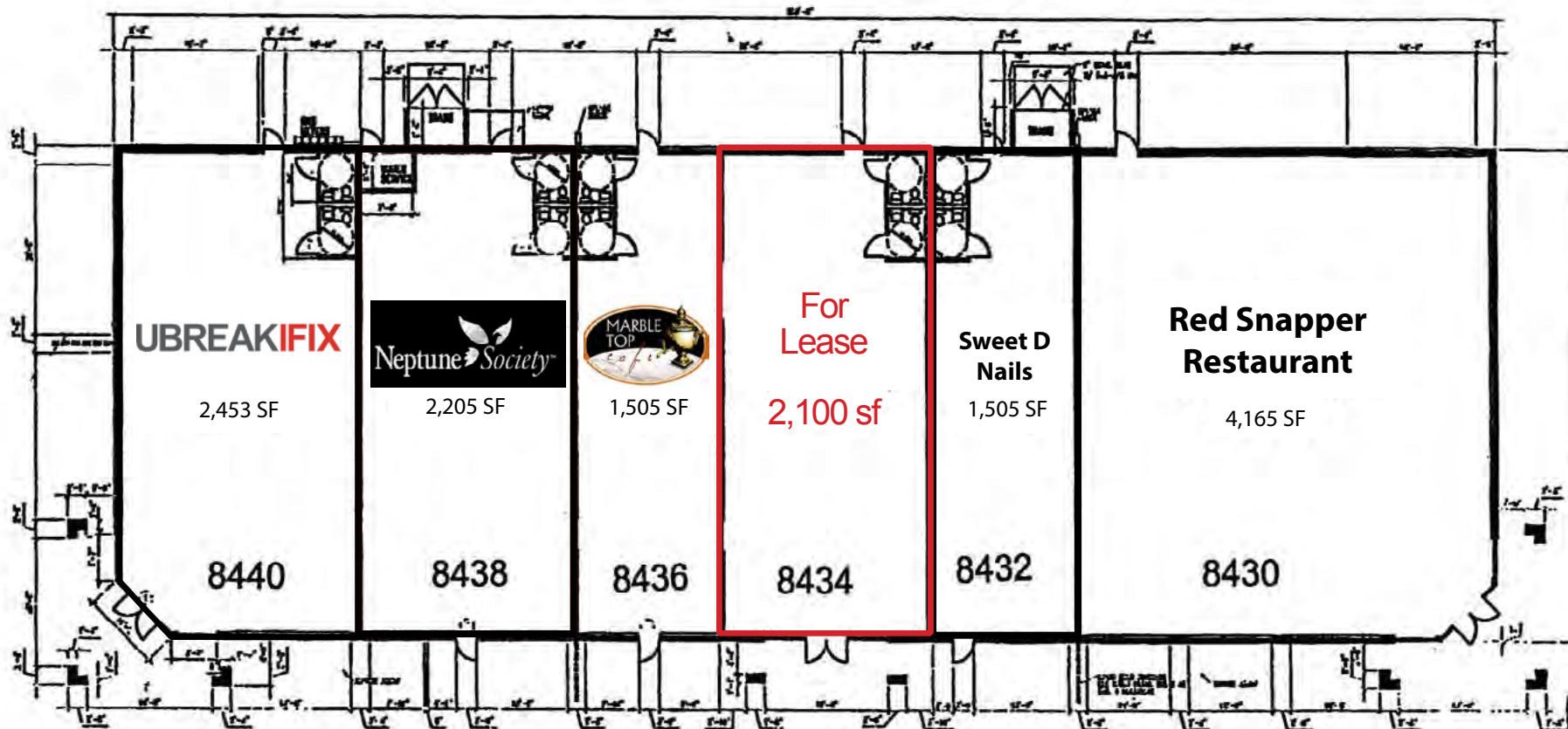


WARD PARKWAY PLAZA

85th Street at State Line Road & Ward Parkway, Kansas City, MO

**IN-LINE RETAIL
SPACE AVAILABLE
FOR LEASE**

AERIAL



EAST ELEVATION

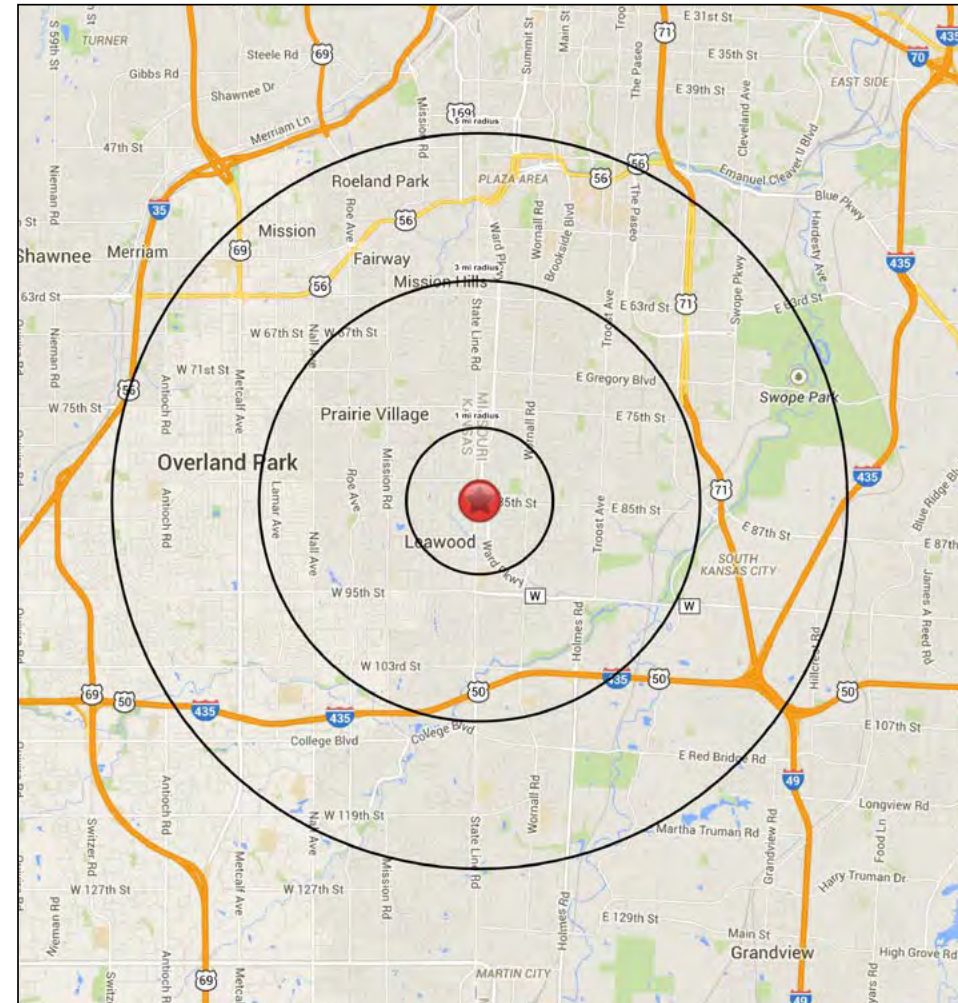
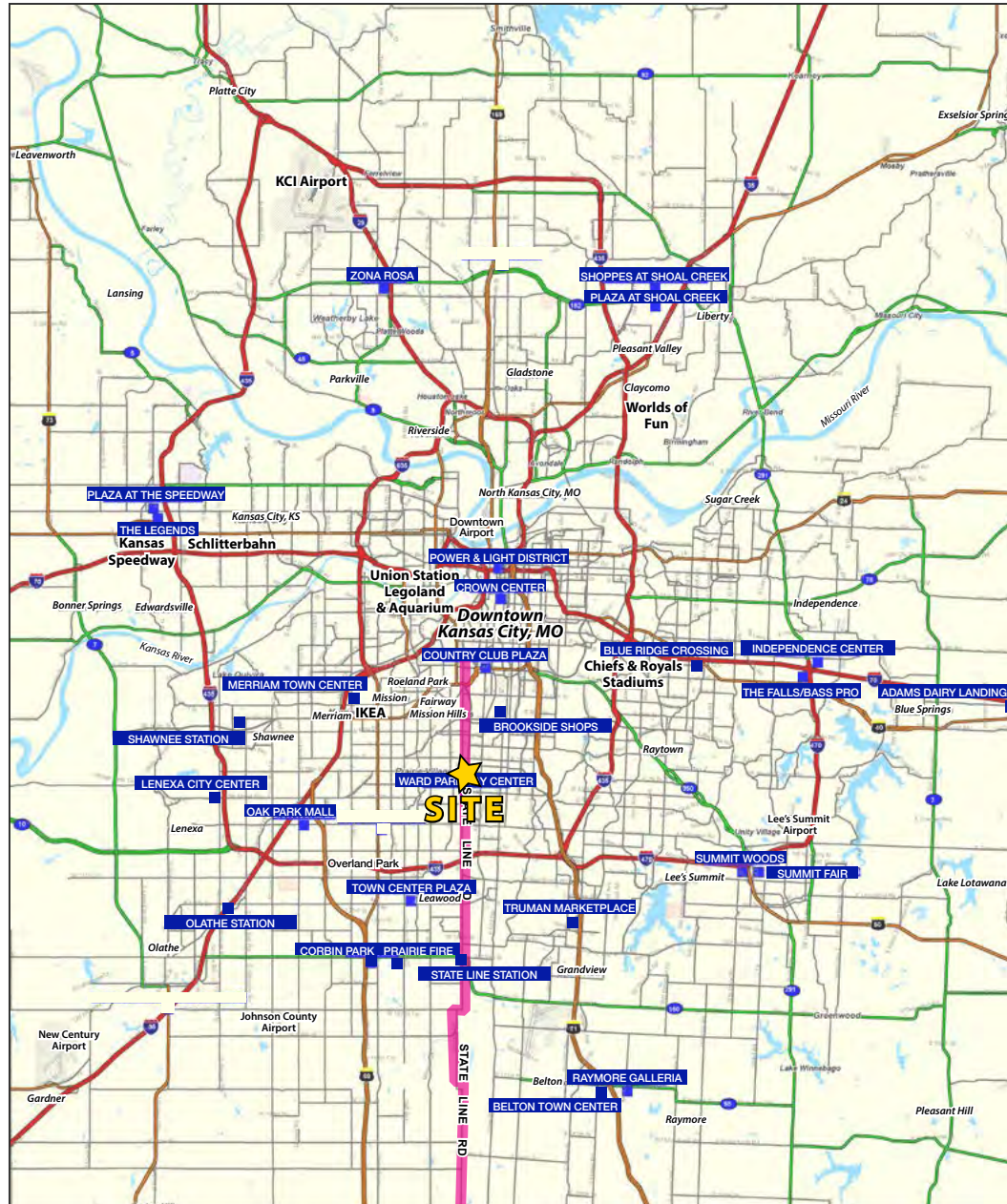




WARD PARKWAY PLAZA

85th Street at State Line Road & Ward Parkway, Kansas City, MO

**IN-LINE RETAIL
SPACE AVAILABLE
FOR LEASE**





WARD PARKWAY PLAZA

85th Street at State Line Road & Ward Parkway, Kansas City, MO

85th Street & Ward Parkway		1 mi radius	3 mi radius	5 mi radius
Kansas City, Missouri				
POPULATION	2018 Estimated Population	9,656	92,474	232,326
	2023 Projected Population	9,938	96,096	243,070
	2010 Census Population	9,542	90,258	224,394
	2000 Census Population	9,712	94,365	235,564
	Projected Annual Growth 2018 to 2023	0.6%	0.8%	0.9%
	Historical Annual Growth 2000 to 2018	-	-0.1%	-0.1%
	2018 Median Age	40	41.1	39.8
HOUSEHOLDS	2018 Estimated Households	4,670	42,779	106,815
	2023 Projected Households	4,825	44,682	112,563
	2010 Census Households	4,515	40,769	100,578
	2000 Census Households	4,587	42,089	103,939
	Projected Annual Growth 2018 to 2023	0.7%	0.9%	1.1%
	Historical Annual Growth 2000 to 2018	0.1%	0.1%	0.2%
RACE AND ETHNICITY	2018 Estimated White	88.4%	76.3%	72.2%
	2018 Estimated Black or African American	5.4%	17.4%	19.7%
	2018 Estimated Asian or Pacific Islander	2.4%	2.2%	2.9%
	2018 Estimated American Indian or Native Alaskan	0.3%	0.3%	0.3%
	2018 Estimated Other Races	3.5%	3.7%	4.9%
	2018 Estimated Hispanic	5.3%	4.7%	6.2%
INCOME	2018 Estimated Average Household Income	\$117,403	\$114,401	\$105,366
	2018 Estimated Median Household Income	\$83,116	\$87,156	\$77,808
	2018 Estimated Per Capita Income	\$56,871	\$52,973	\$48,539
EDUCATION (AGE 25+)	2018 Estimated Elementary (Grade Level 0 to 8)	0.5%	1.0%	1.5%
	2018 Estimated Some High School (Grade Level 9 to 11)	1.6%	2.7%	3.6%
	2018 Estimated High School Graduate	14.4%	15.2%	17.6%
	2018 Estimated Some College	19.9%	18.2%	19.7%
	2018 Estimated Associates Degree Only	7.1%	5.6%	6.4%
	2018 Estimated Bachelors Degree Only	35.2%	33.6%	30.2%
	2018 Estimated Graduate Degree	21.4%	23.7%	21.0%
BUSINESS	2018 Estimated Total Businesses	730	4,165	13,691
	2018 Estimated Total Employees	7,306	43,395	198,395
	2018 Estimated Employee Population per Business	10.0	10.4	14.5
	2018 Estimated Residential Population per Business	13.2	22.2	17.0

