

FOR LEASE **Petaluma**

Theatre District Office & Retail

**CLICK HERE FOR MORE INFO
ON NEW LEASING INCENTIVES!**

- FULL FEE FOR PROCURING BROKERS
- VIRTUAL TOUR CLOSE INCENTIVE
- TOUR INCENTIVES

Vibrant, Class "A" Office & Retail Spaces For Lease | Petaluma, CA



FOR LEASE **Petaluma** Theatre District Office & Retail

Downtown Petaluma

Theatre Square is Petaluma's premier downtown location, in the center of it all

Type:

Office & Retail

Address:

151 Petaluma Blvd. South
140 Second Street
Petaluma, CA

Total SF:

140,755

DESCRIPTION

- Theatre Square is Petaluma's premier downtown location, in the center of it all
- Prompt decision-making & uncomplicated negotiations by local, reputable owner
- Class 'A' building with high-quality finishes throughout
- Abundant and convenient parking nearby
- Men's and women's shower/lockers for office tenants
- Operable windows
- Annual average daily traffic count at D Street & 1st Street is approximately 18,371*



FOR LEASE **Petaluma** Theatre District Office & Retail



Downtown Petaluma



©2020 Jones Lang LaSalle IP, Inc. All rights reserved. All information contained herein is from sources deemed reliable; however, no representation or warranty is made to the accuracy thereof.



EXCLUSIVELY MARKETING BY THE DOWLING-BRACCO TEAM OF JLL | WWW.DBREA.COM | 707.421.2900

Tony Sarno
707.217.7196
RE License# 01430933

Jordan Lazor
415.595.5102
RE License# 0201117

Chris Tewhill
415.747.0798
RE License# 02034376

Glen Dowling
707.227.7800
RE License# 0890450

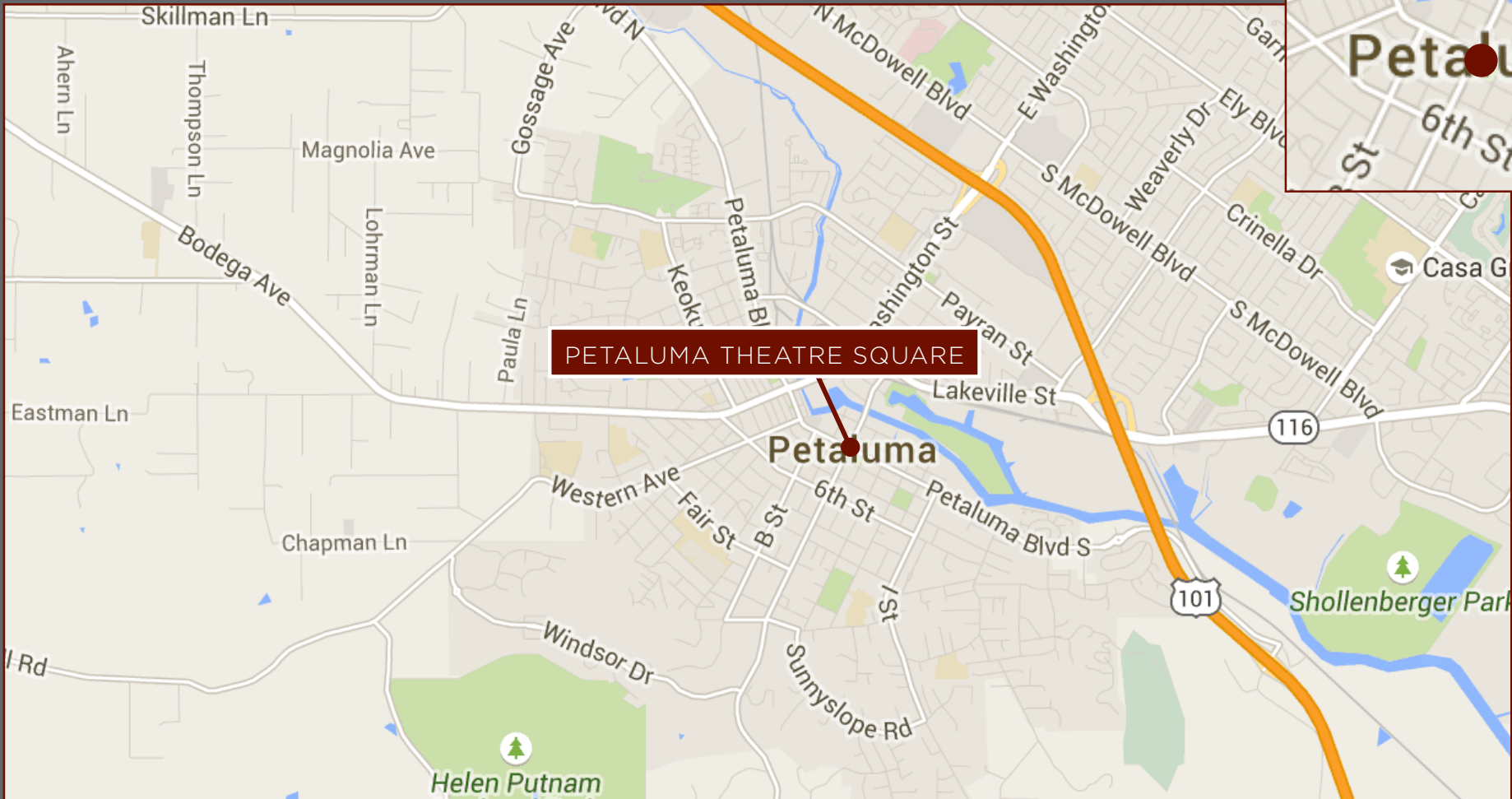
Jones Lang LaSalle Brokerage, Inc.
Real Estate License # 01856260

FOR LEASE Petaluma Theatre District

Working in Petaluma has never been easier

Demographics:

	1 mile	2 miles	3 miles
Population	15,831	45,353	65,053
Avg. HH Income	\$99,724	\$103,853	\$111,881
Daytime Population	18,743	41,583	62,063



EXCLUSIVELY MARKETING BY THE DOWLING-BRACCO TEAM OF JLL | WWW.DBREA.COM | 707.421.2900

Tony Sarno
707.217.7196
RE License# 01430933

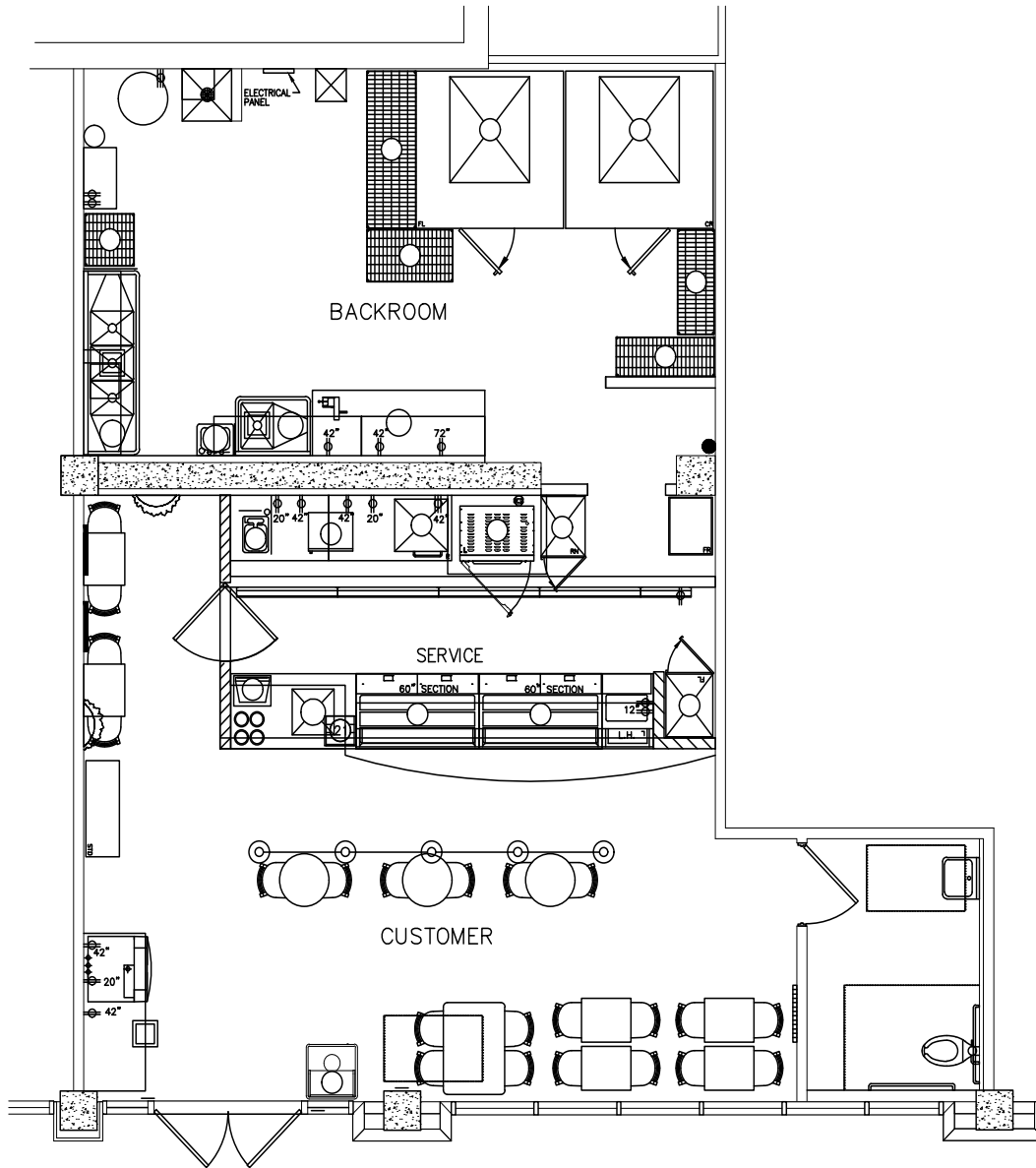
Jordan Lazor
415.595.5102
RE License# 0201117

Chris Tewhill
415.747.0798
RE License# 02034376

Glen Dowling
707.227.7800
RE License# 0890450

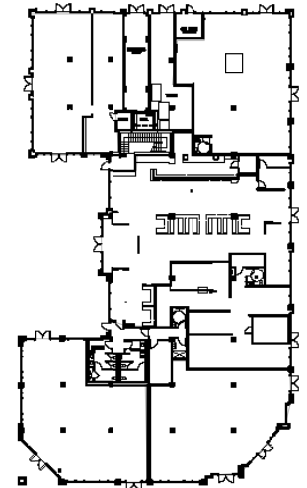
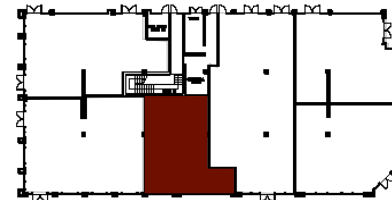
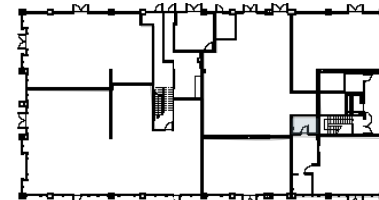


FOR LEASE | Theatre District Office & Retail
151 Petaluma Blvd. South | Petaluma, CA



1,246 RSF
Suite 109

Former Subway restaurant location.
Previous Subway buildout.
Current space is warm shell.



FOR LEASE | Theatre District Office & Retail 151 Petaluma Blvd. South | Petaluma, CA

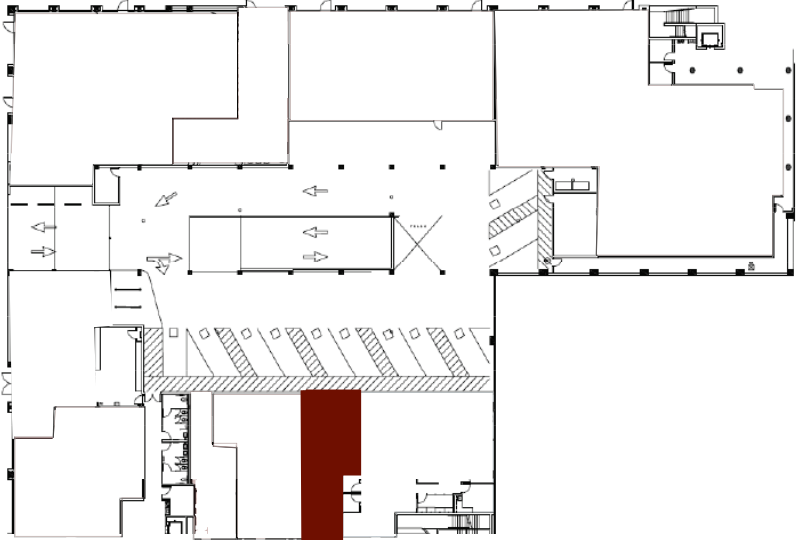
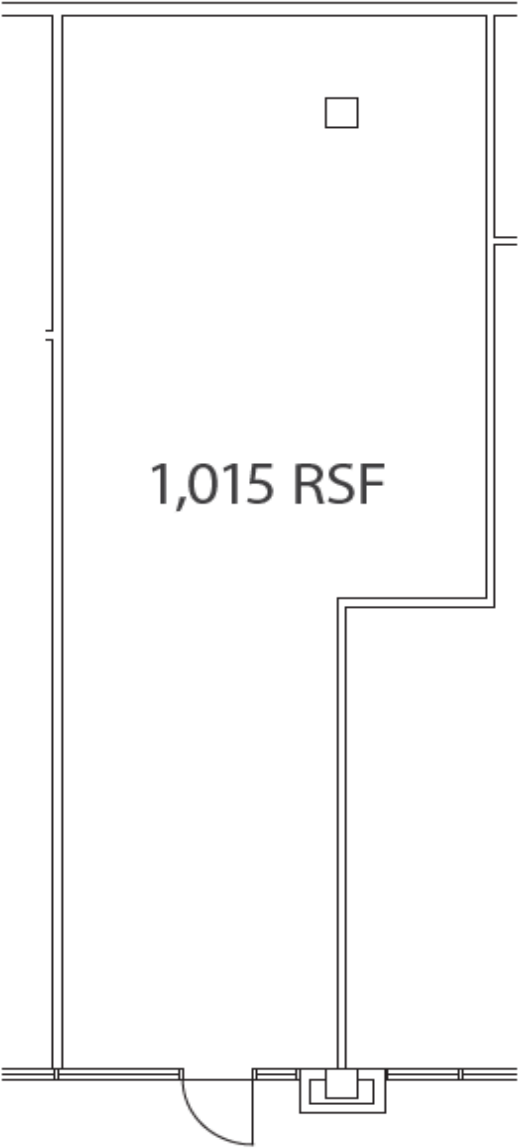
Retail



FOR LEASE | Theatre District Office & Retail
151 Petaluma Blvd. South | Petaluma, CA



1,015 RSF



EXCLUSIVELY MARKETED BY THE DOWLING-BRACCO TEAM OF JLL | WWW.DBREA.COM | 707.421.2900

Tony Sarno
707.217.7196
RE License# 01430933

Jordan Lazor
415.595.5102
RE License# 0201117

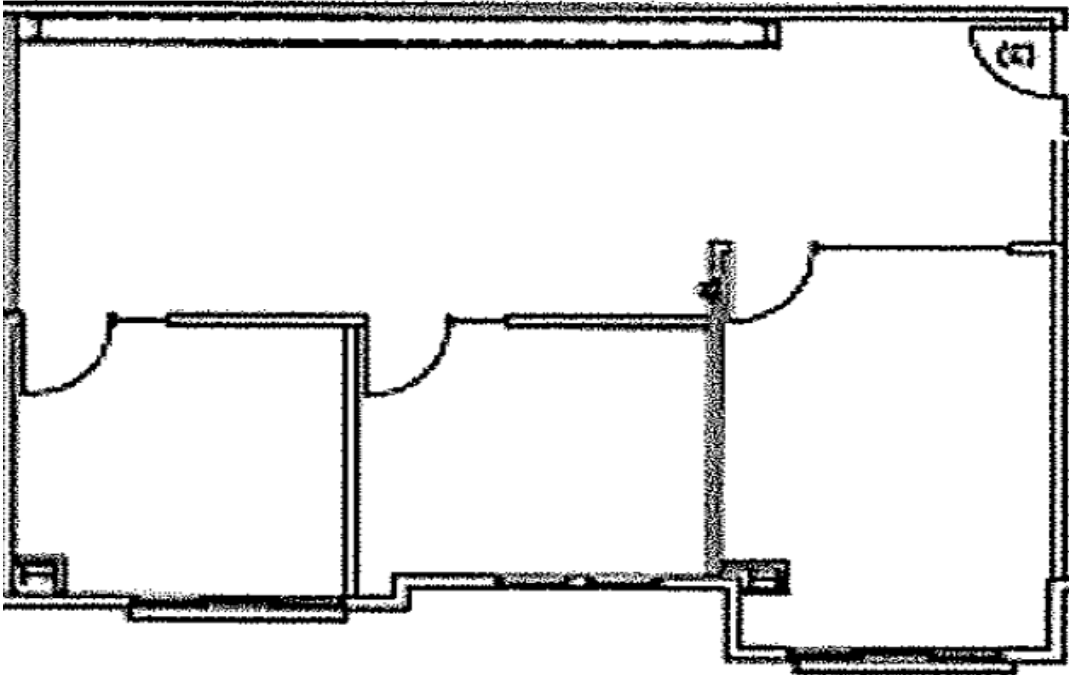
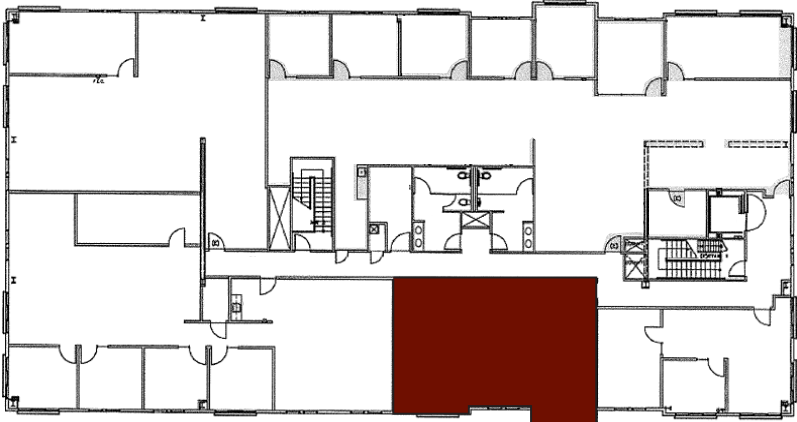
Chris Tewhill
415.747.0798
RE License# 02034376

Glen Dowling
707.227.7800
RE License# 0890450

FOR LEASE | Theatre District Office & Retail
140 Petaluma Blvd. South | Petaluma, CA



1,145 RSF
Suite 314



EXCLUSIVELY MARKETING BY THE DOWLING-BRACCO TEAM OF JLL | WWW.DBREA.COM | 707.421.2900

Tony Sarno
707.217.7196
RE License# 01430933

Jordan Lazor
415.595.5102
RE License# 0201117

Chris Tewhill
415.747.0798
RE License# 02034376

Glen Dowling
707.227.7800
RE License# 0890450