

# RESIDENTIAL LAND PARCELS

Idaho Road & Apache Trail (AZ 88) | Apache Junction, AZ



## OFFERING DETAILS

SALE PRICE	\$2,950,000
TOTAL AVAILABLE PARCELS	7
TOTAL LAND SIZE	+/- 26.4 Acres
ZONING	Residential

## OFFERING SUMMARY

This offering includes a total of seven land parcels totaling approximately 26.4 Acres. The parcels are located off of Apache Trail & Idaho Road and Apache Trail & Superstition Boulevard in Apache Junction, Arizona. Downtown Apache Junction area serves as the gateway to the Superstition Mountains, containing the core civic functions of the city, as well as a growing number of retail and restaurant amenities. The city is ready and able to diversify their residential offerings with new apartments to serve the next generation.

## EXCLUSIVELY LISTED BY:



**LARRY KUSH**

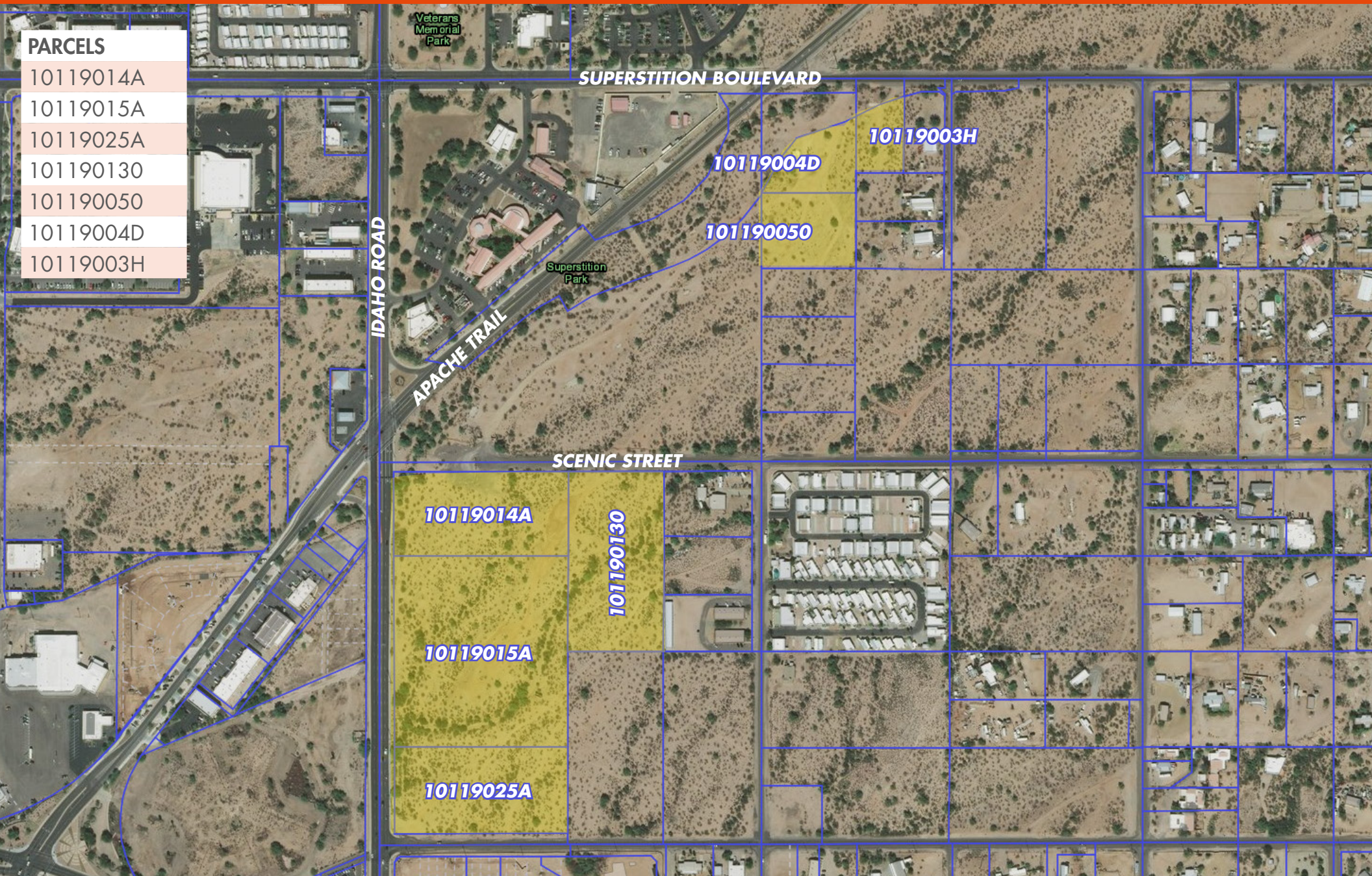
O: 480.482.1944

C: 480.290.2909

[larry.kush@orionprop.com](mailto:larry.kush@orionprop.com)

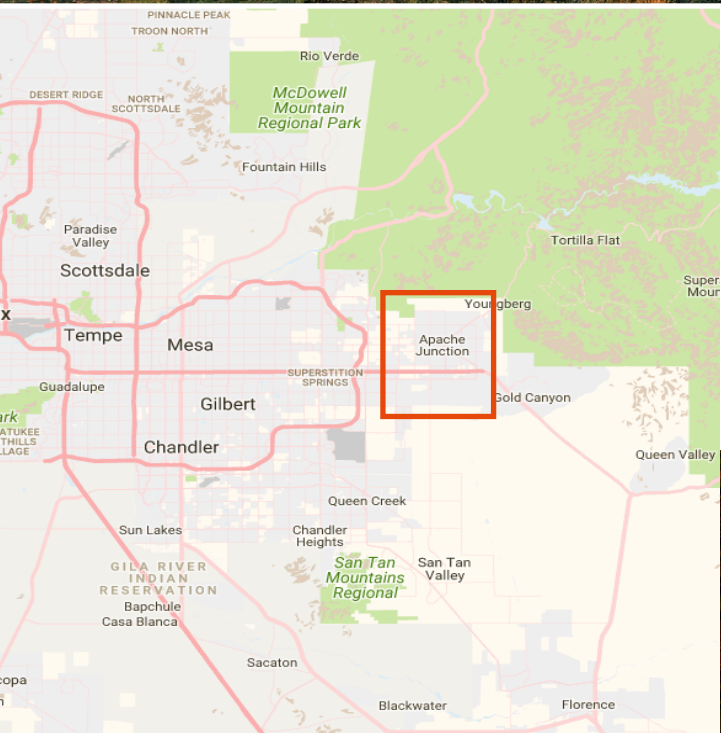


- PARCELS**
- 10119014A
  - 10119015A
  - 10119025A
  - 101190130
  - 101190050
  - 10119004D
  - 10119003H



**LARRY KUSH**  
O: 480.482.1944  
C: 480.290.2909  
larry.kush@orionprop.com





**APACHE JUNCTION, AZ**

Apache Junction is a vibrant city among nature, offering abundant outdoor activities from visiting beautiful parks like the Lost Dutchman State Park or Tonto National Forest, to riding through Canyon and Roosevelt Lakes. Apache Junction was established along route 88 in Arizona, a historic trail with many things to experience. Tourists and residents alike can enjoy great camping, jet skiing, fishing, mountain biking, river tubing, hiking, and much more.

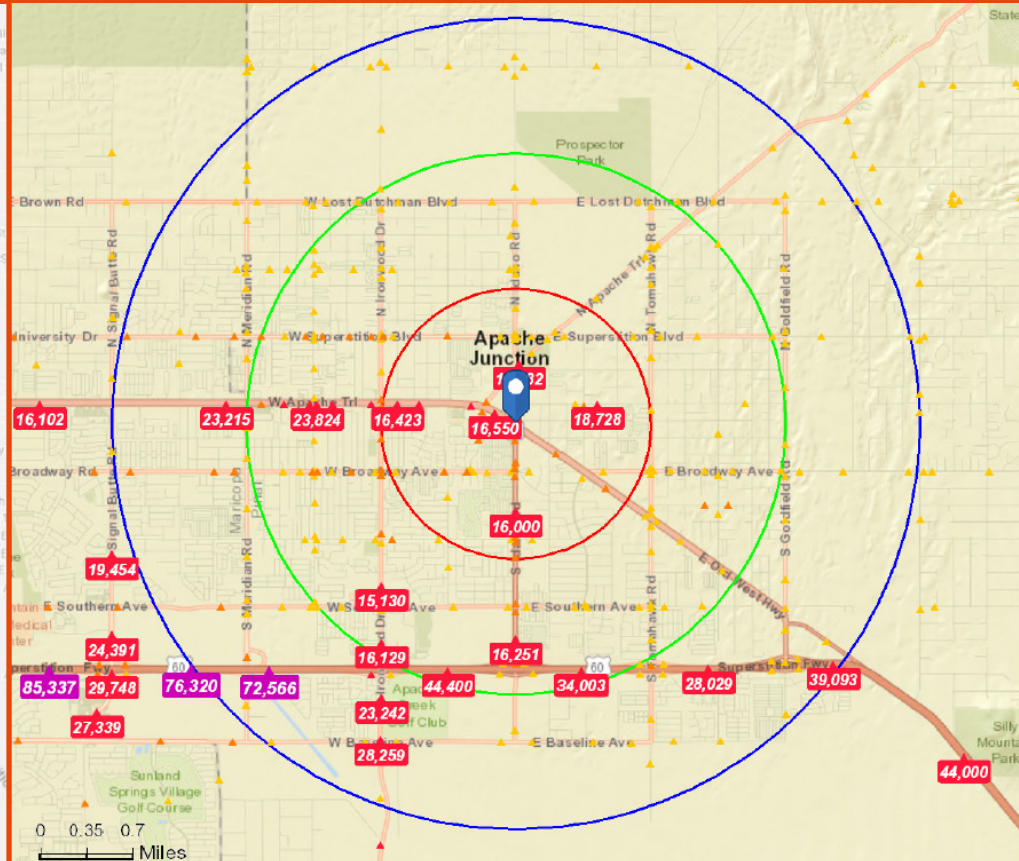
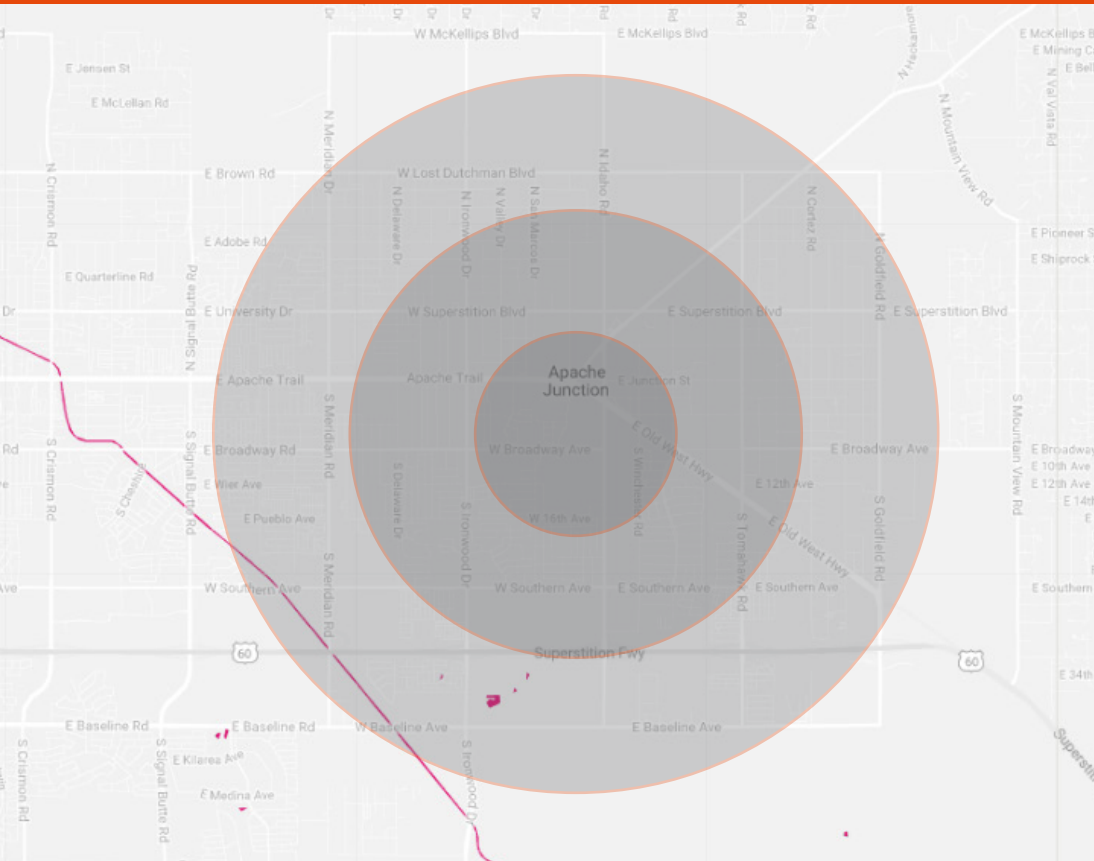
***"The Apache Trail combines the grandeur of the Alps, the glory of the Rockies, the magnificence of the Grand Canyon and then adds the indefinable something that none of the others have." - President Theodore Roosevelt***



**LARRY KUSH**  
O: 480.482.1944  
C: 480.290.2909  
larry.kush@orionprop.com



# RESIDENTIAL LAND PARCELS DEMOGRAPHICS



2017 SUMMARY	ONE MILE	TWO MILE	THREE MILE
DAYTIME POPULATION	12,254	38,211	64,196
POPULATION	9,148	31,760	54,708
AVERAGE HOUSEHOLD SIZE	2.18	2.28	2.33
AVERAGE HOUSEHOLD INCOME	\$51,140	\$50,248	\$53,496
MEDIAN AGE	51.8	49.1	49.8



**LARRY KUSH**  
 O: 480.482.1944  
 C: 480.290.2909  
 larry.kush@orionprop.com

