

# OFFICE SPACE FOR LEASE



**279 South Main Street, Suite 2B  
Doylestown Borough, Bucks County, PA**

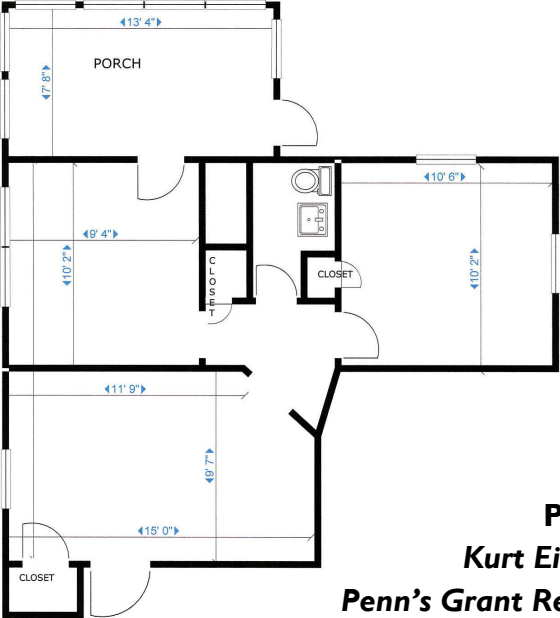
COMMERCIAL • INDUSTRIAL • INVESTMENT

*Central Doylestown  
Borough Location!*



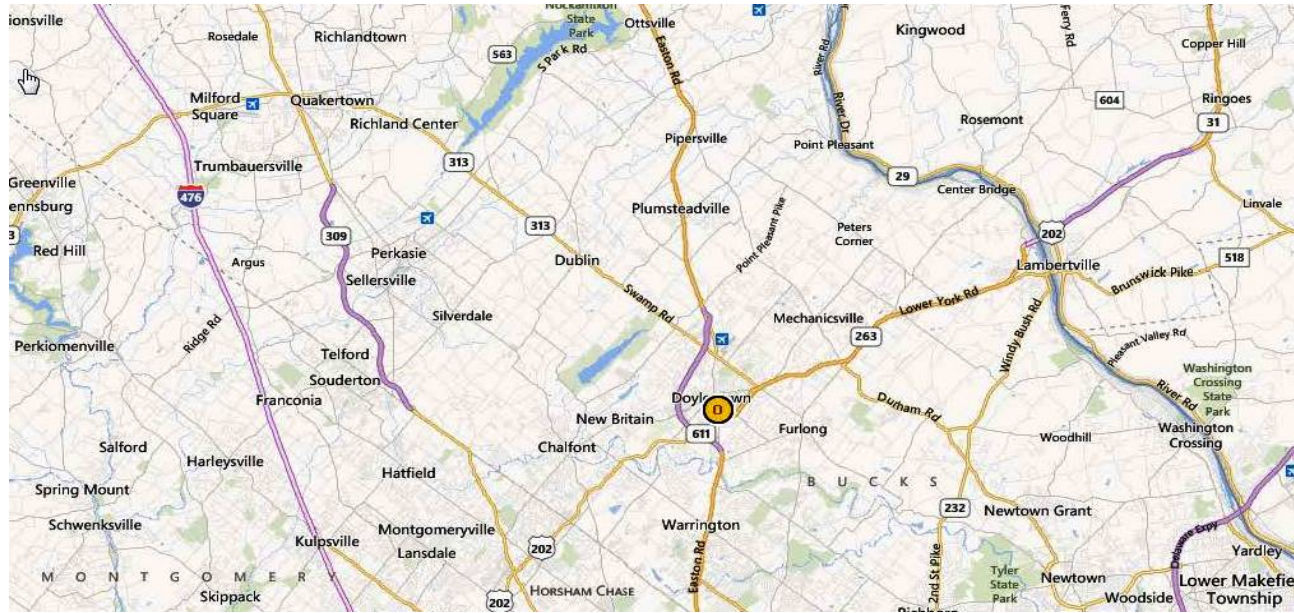
### PROPERTY SPECIFICATIONS

**Available Space:** ..... 560± SF  
**Availability:** ..... Available  
**HVAC** ..... Window Units  
**Lease Rate:** ..... \$18 PSF (\$840 per month)  
plus electric, trash, water & sewer

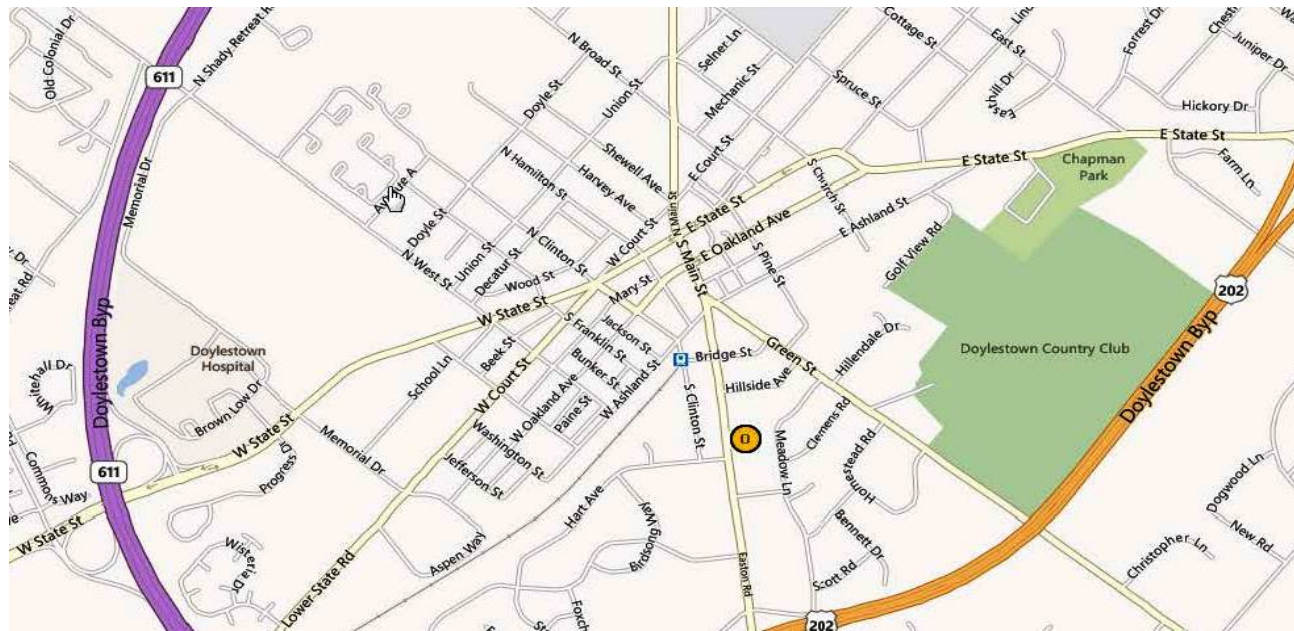


**PRESENTED BY:**  
**Kurt Eisenschmid, CCIM**  
**Penn's Grant Realty Corporation**

2005 S Easton Rd, STE 306, Doylestown, PA  
• 215-489-3800 x3 • kurt@pgr Realty.com • www.pgr Realty.com



REGIONAL MAP



STREET MAP