

1868 PACIFIC AVENUE LONG BEACH, CA



FOR SALE

Approximately 1,461 SF
MEDICAL OFFICE BUILDING



1868 Pacific Avenue

Long Beach, CA 90806



P R O P E R T Y S U M M A R Y

Available SF: 1,461 SF (Approx.)

Lot Size: 6,750 SF

APN: 7209-021-005

Sale Price: \$494,000

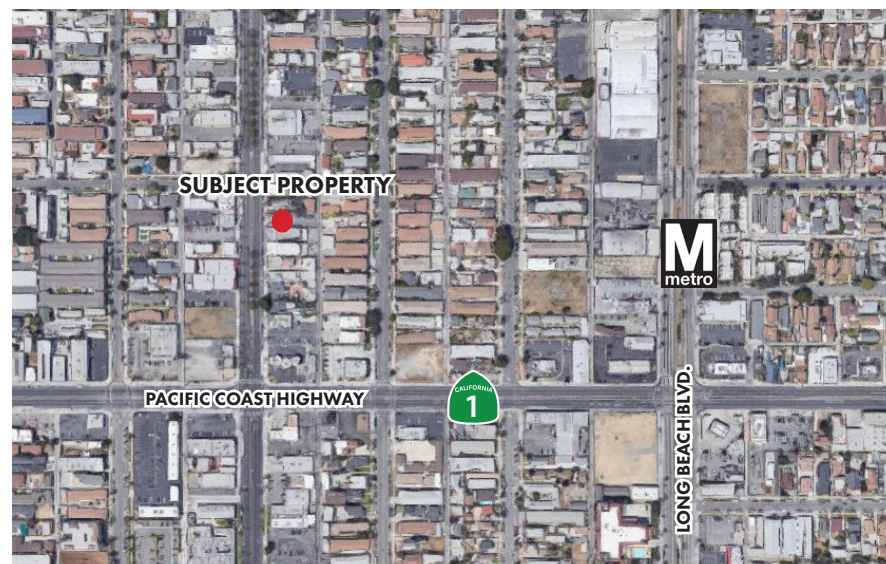
Parking: 9 spaces (6:1)

Zoning: LBCCA - Community Automobile Oriented District (CCA) which permits retail and service uses for an entire community.

Year Built: 1922/1941

Additional Features:

- Midtown District of Long Beach
- New HVAC
- Short Distance from Long Beach Memorial Medical Center
- Quick 710 Freeway Access
- Close to the Blue Line Metro
- Property will be delivered vacant.

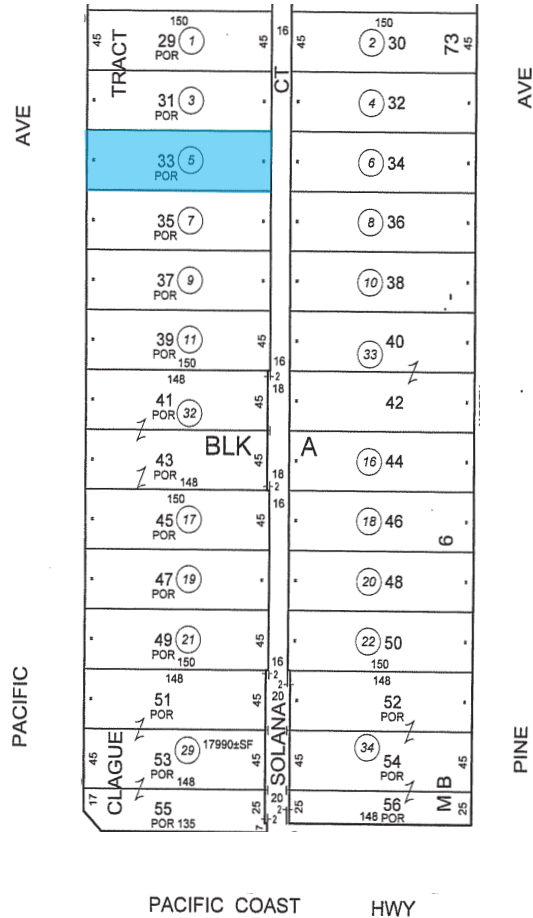


HIGHLIGHTS

Property is located in the Wrigley District, named after William Wrigley Jr, the owner and founder of Wrigley Spearmint Gum and is one of the first communities established in the City of Long Beach. Home to Veteran's Park and the Wrigley Marketplace shopping district, the area consists primarily of modest single-family homes developed between 1920 and 1940 with commercial uses concentrated on Pacific Coast Highway, Pacific Avenue and Willow Avenue. The property is 2 blocks north of the College Medical Center South campus and less than 2 miles from Long Beach Memorial Medical Center, a major regional provider of medical and surgical services.

Photos





**For Sale
Information
Contact:**

Becky Blair

CEO & Principal

Cell: (562) 301-4515

Email: BBlair@cbclair.com

LIC# 00630793

Linda Treffry

Associate

Cell: (562) 541-5627

Email: LTreffry@cbclair.com

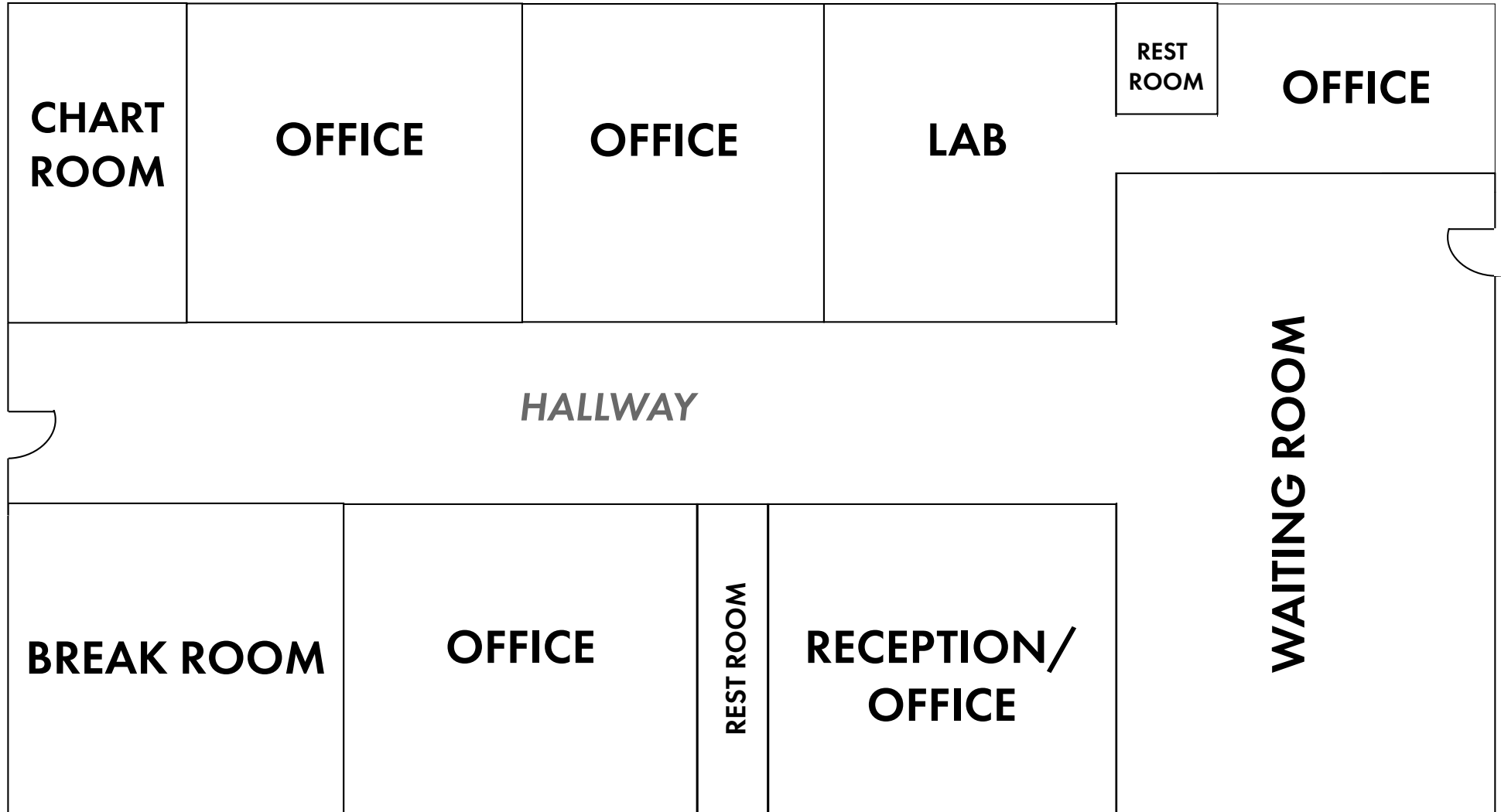
LIC# 01991392



Floor Plan



BLAIR WESTMAC



**1868 PACIFIC AVENUE
LONG BEACH, CA 90806**

CONTACT:

BECKY BLAIR

CEO & Principal

Cell: (562) 301-4515

Email: BBlair@cbcblair.com

LIC# 00630793

LINDA TREFFRY

ASSOCIATE

Cell: (562) 541-5627

Email: LTreffry@cbcblair.com

LIC# 01991392



PARKING AREA

©2020 Coldwell Banker Real Estate LLC, dba Coldwell Banker Commercial Affiliates. All rights reserved. Coldwell Banker Real Estate LLC, dba Coldwell Banker Commercial affiliates fully supports the principles of the equal opportunity act. Each office is independently owned and operated. Coldwell Banker Commercial and the Coldwell Banker Commercial logo are registered service marks owned by Coldwell Banker Real Estate LLC, dba Coldwell Banker Commercial affiliates. Corporate BRE #01330395

As of 07.06.20



Coldwell Banker Commercial BLAIR WESTMAC | 333 W. Broadway, Ste. 312 | Long Beach, CA 90802
562.495.6070 - phone | 562.495.6072 - fax | www.cbcblair.com | BRE#: 01330395