

Tesson Ferry Road at Mattis Road
St. Louis, Missouri

Southroads Center

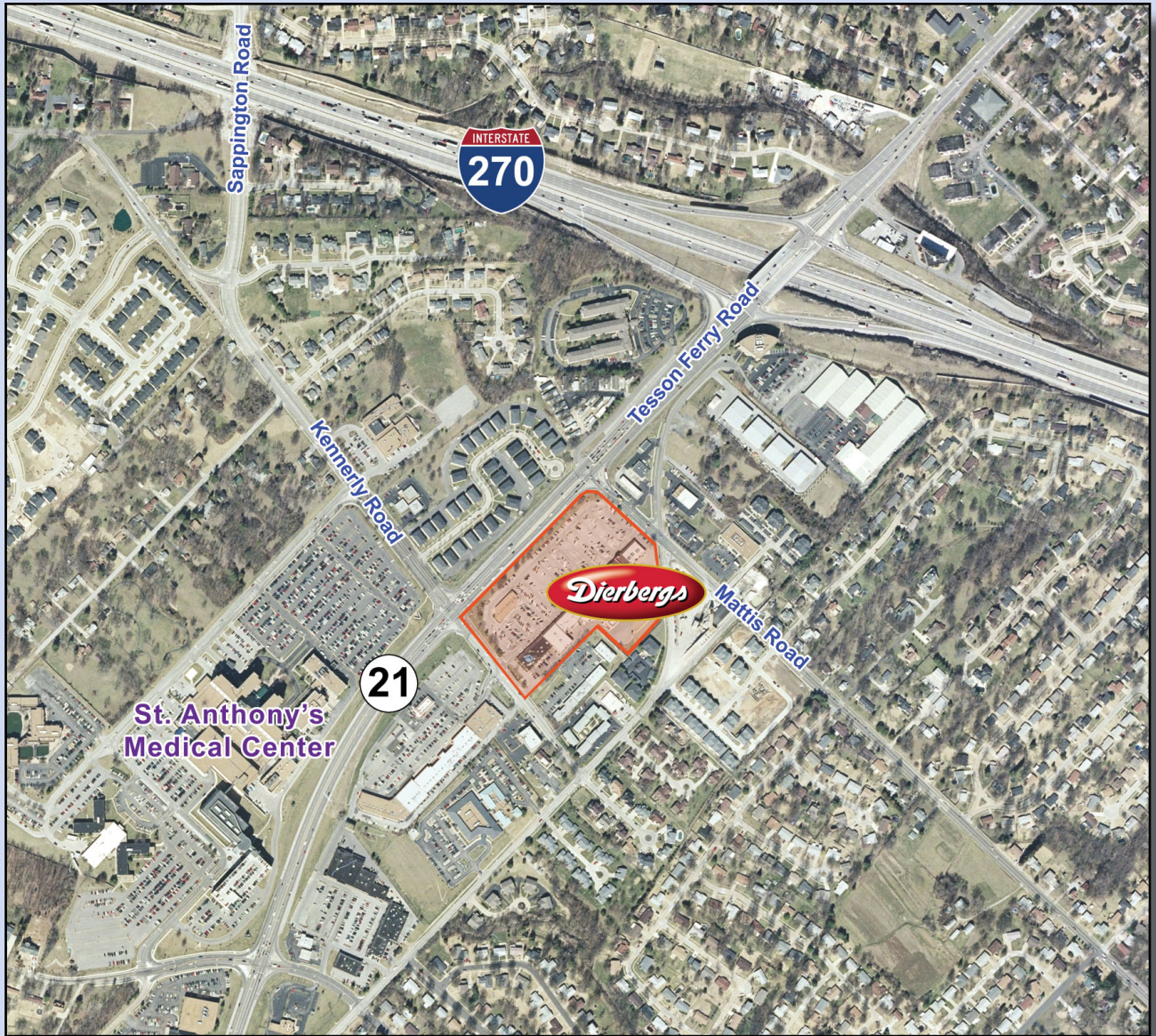


For more information please contact:

(314)991-8900 Phone • (314)991-2474 Fax

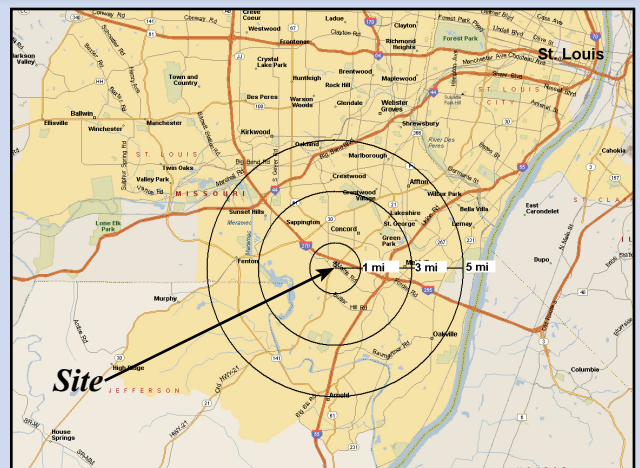
Weller Meyer (x226) • wmeyer@caplaco.com

11850 Studt Avenue • P.O. Box 419121 • St. Louis, Missouri 63141



<i>Demographics</i>	<i>1-Mile</i>	<i>3-Mile</i>	<i>5-Mile</i>
2020 Population	7,357	67,815	188,308
2020 Average Household Income	\$106,263	\$98,106	\$92,841

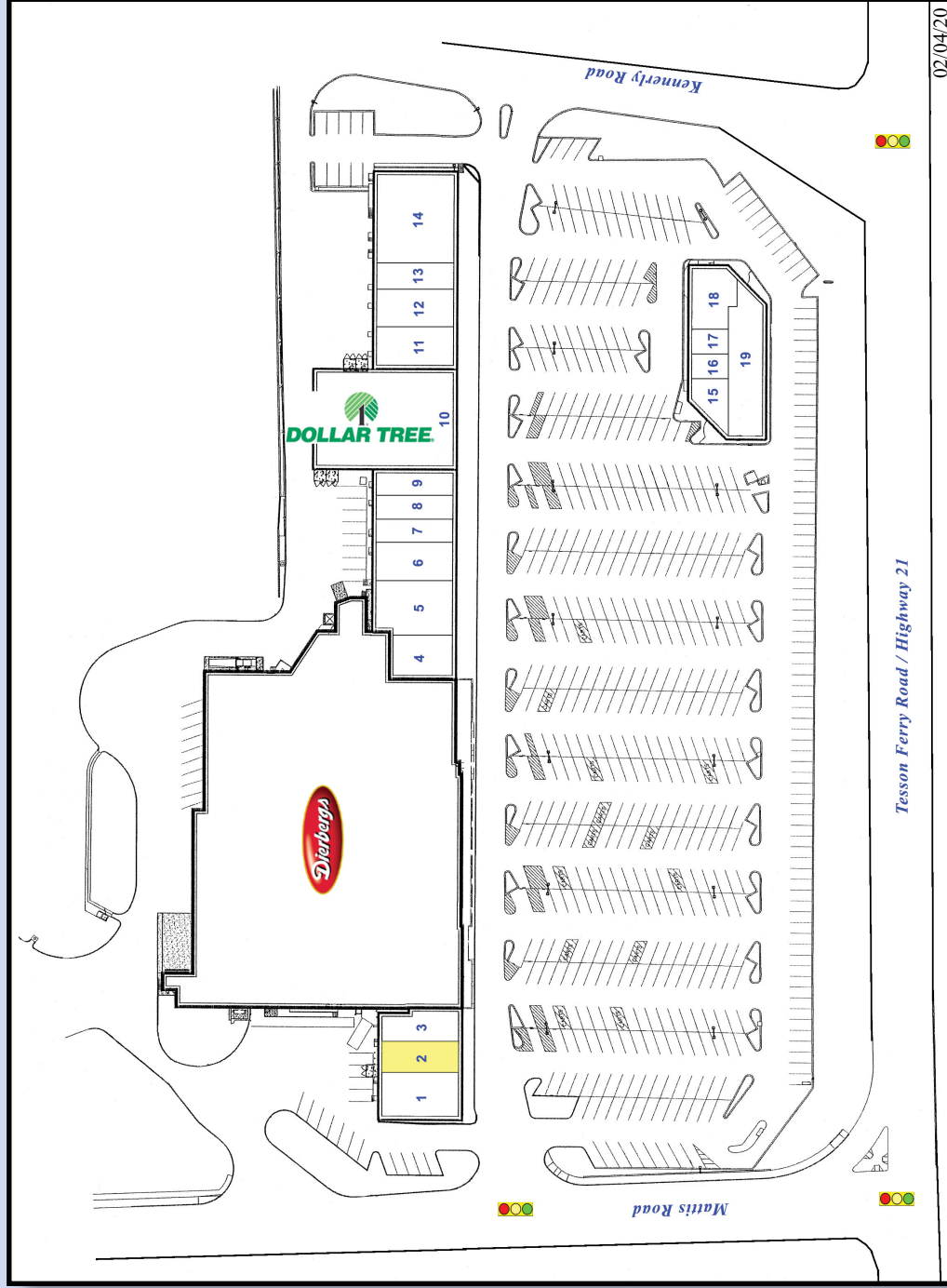
- 2019 traffic count on Tesson Ferry Road near I-270 is 49,606 vehicles per day.
- Anchored by Dierbergs.



Southroads Center

Tesson Ferry Road at Mattis Road
St. Louis, Missouri

<u>Space</u>	<u>Tenant</u>	<u>Size (sf)</u>
1	Credit Union	2,800
2	Available	1,680
3	Clarkson Eyecare	1,618
4	UPS Store	1,620
5	Orange Theory	3,140
6	St. Louis Children's Hospital	2,100
7	Topline Nails	1,820
8	AT&T Mobility	1,330
9	American Cleaners	1,750
10	Dollar Tree	10,000
11	Hunan Royal	2,100
12	Starbucks	2,415
13	Custom Cuts	1,225
14	Chevy's Fresh Mex	5,670
15	Edward Jones	761
16	Dr. Mammem, DDS	636
17	Beltone Hearing Aids	636
18	Sinha Dental	1,404
19	Fleet Feet	3,438



02/04/20



The information contained herein was obtained from sources deemed reliable, however, Capitol Realty Group makes no guarantees as to the completeness or accuracy thereof. This information is subject to error, omission, change in price or conditions, prior sale or lease, or withdrawal without notice.

11850 Studt Avenue • P.O. Box 419121 • St. Louis, Missouri 63141 • Telephone: (314)991-8900 • Fax: (314)991-2474