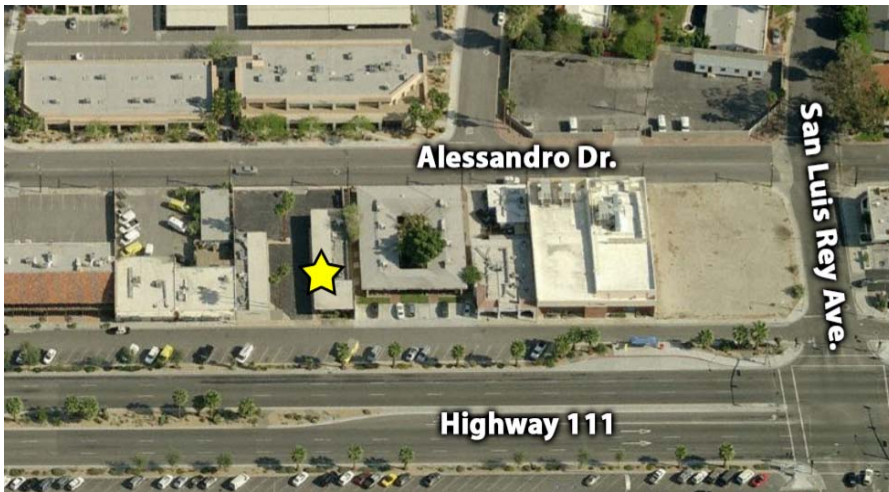


# OFFICE / RETAIL SPACE FOR LEASE

## HIGHWAY 111 VISIBILITY



**73730 Highway 111, Suite 6  
Palm Desert, CA**



- Suite 6 -- Approx. 450 SF
- \$675/Mo. Mod. Gross
- Brand New Paint, Carpet, and Roof!
- Prime Highway 111 Retail Location
- Easy Access to Front & Rear Parking
- APN: 627-173-005



www.baxleyproperties.com  
Phone: 760-773-3310  
Fax: 760-773-3013  
73712 Alessandro Drive, Ste B-4, Palm Desert, CA 92260

**Donna Rodriguez**  
donna@baxleyproperties.com  
**760-773-6017**  
DRE License # 01928453

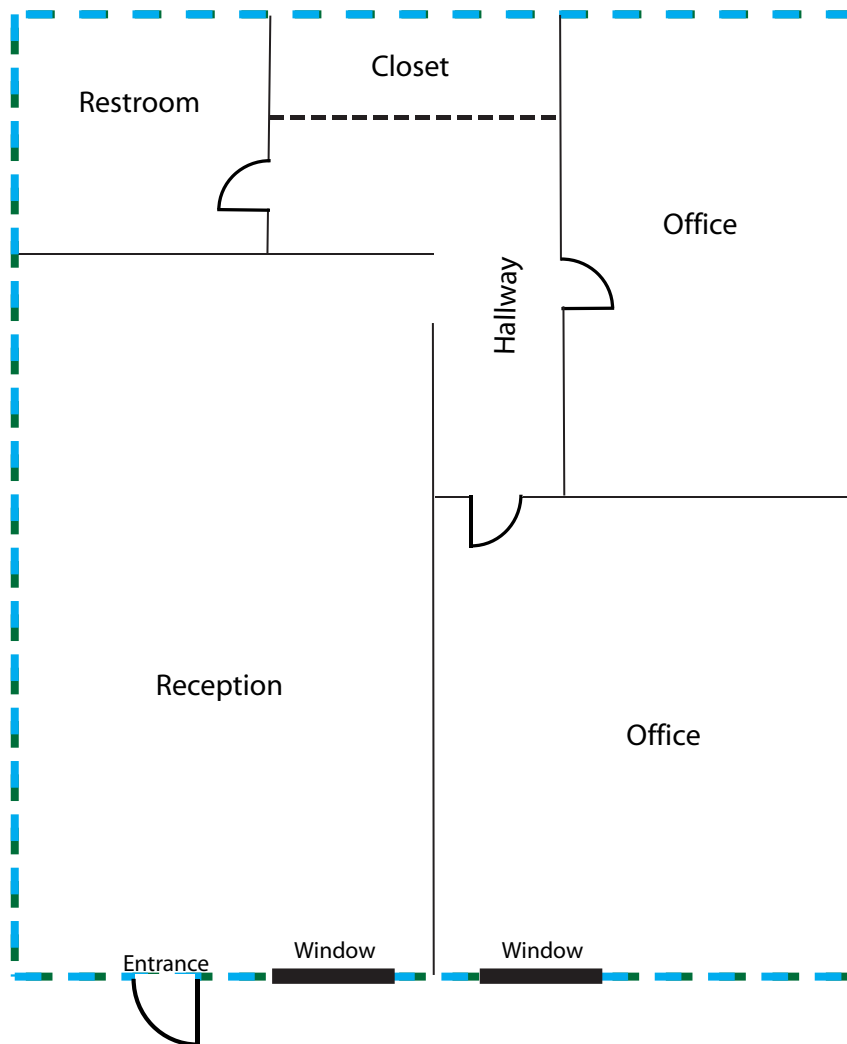
#### DISCLAIMER:

The information above has been obtained from sources believed reliable. While we do not doubt its accuracy, we have not verified it and make no guarantee, warranty or representation about it. It is your responsibility to independently confirm its accuracy and completeness. Any projections, opinions, assumptions or estimates used are for example only, and do not represent the current or future performance of the property.

1/21/20

# OFFICE / RETAIL SPACE FOR LEASE

73730 HIGHWAY 111, SUITE 6, PALM DESERT, CA: FLOORPLAN



**DISCLAIMER:**

The information above has been obtained from sources believed reliable. While we do not doubt its accuracy, we have not verified it and make no guarantee, warranty or representation about it. It is your responsibility to independently confirm its accuracy and completeness. Any projections, opinions, assumptions or estimates used are for example only, and do not represent the current or future performance of the property.