

Puyallup Distribution Center

Todd Road NE &
Spencer Street North
Puyallup, WA

123,500 SF Building

Under Construction
Available Q4 2017



Divisible to a two-tenant building

Excellent access to SR-167

Concrete tilt construction;
reinforced slab

60 mil TPO roof

20 DH doors / 2 GL doors

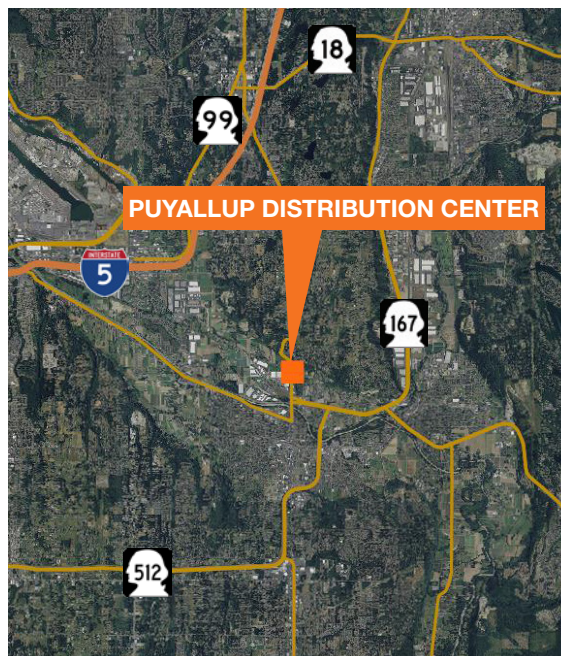
32' clear height

1,200 amp electrical service

ESFR fire protection

15 trailer stalls, or this area
can be used for additional
employee parking

Location



Contact

Todd Clarke

253.722.1422

tclarke@kiddermathews.com

Thad Mallory, SIOR

206.248.7338

tmallory@kiddermathews.com



CROW HOLDINGS
INDUSTRIAL

Puyallup Distribution Center



Contact

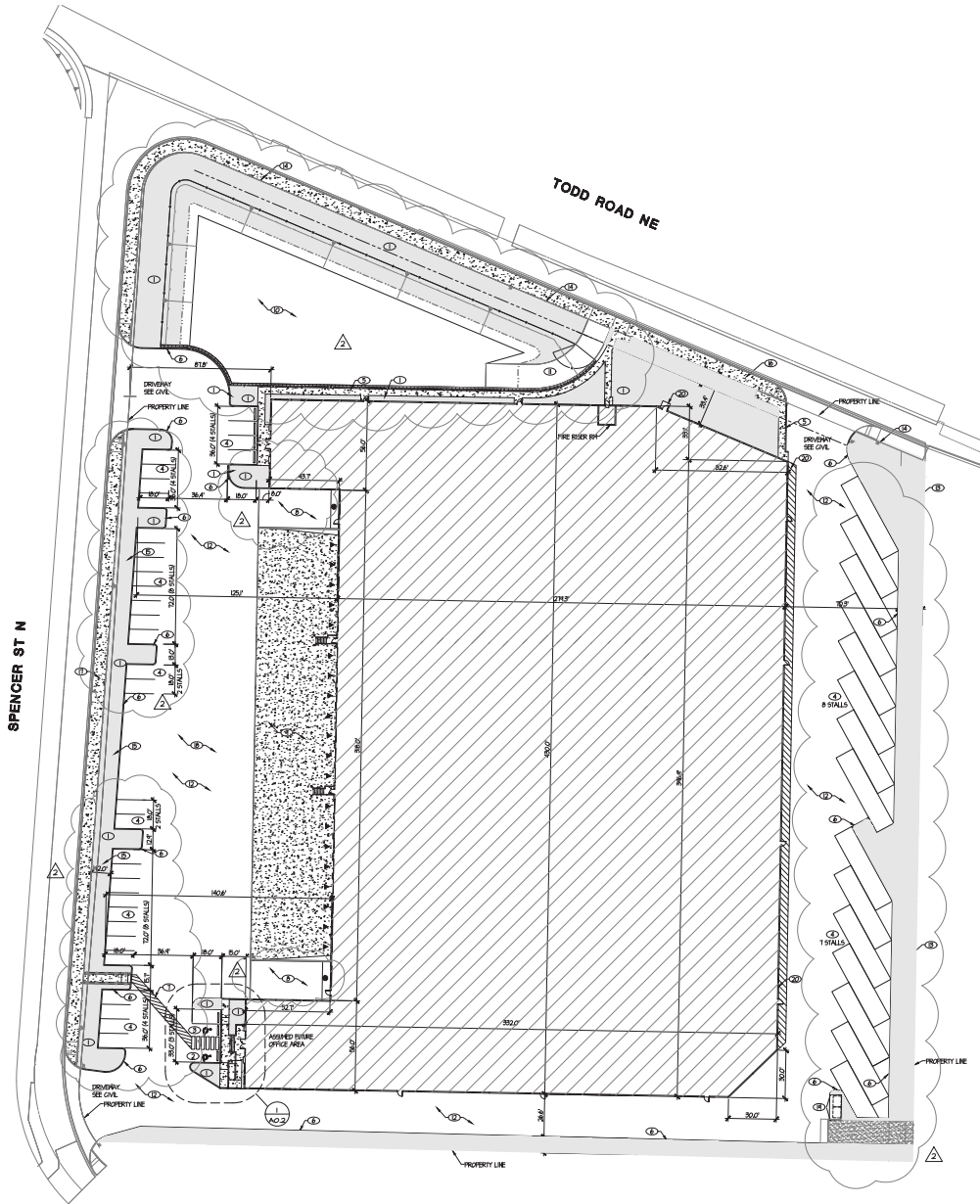
Todd Clarke
253.722.1422
tclarke@kiddermathews.com

Thad Mallory, SIOR
206.248.7338
tmallory@kiddermathews.com



CROW HOLDINGS
INDUSTRIAL

Puyallup Distribution Center



SITE PLAN
SCALE: 1"=30'-0"

GRAPHIC SCALE
0 5 10 20 30 40 50 60 70 80 90 100

Contact

Todd Clarke
253.722.1422
tclarke@kiddermathews.com

Thad Mallory, SIOR
206.248.7338
tmallory@kiddermathews.com



CROW HOLDINGS
INDUSTRIAL