

[ACCESS NEW VIRTUAL TOUR HERE](#)

 **TRANSWESTERN**[®]



OFFICE | SOMA EAST | LUXURY DETAILS | UNIQUE CHARACTER

520 BRYANT

FULL BUILDING OPPORTUNITY

CONTACT

MIKE MCCARTHY

LIC# 00929942
mike.mccarthy@transwestern.com
415.489.1756

BRIAN MCCARTHY

LIC# 01840990
brian.mccarthy@transwestern.com
415.489.1753

MADDIE MEYERSIECK

LIC# 01961652
maddie.meyersieck@transwestern.com
415.489.1757

OFFICE | SOMA EAST | LUXURY DETAILS | UNIQUE CHARACTER

520 BRYANT

FULL BUILDING OPPORTUNITY



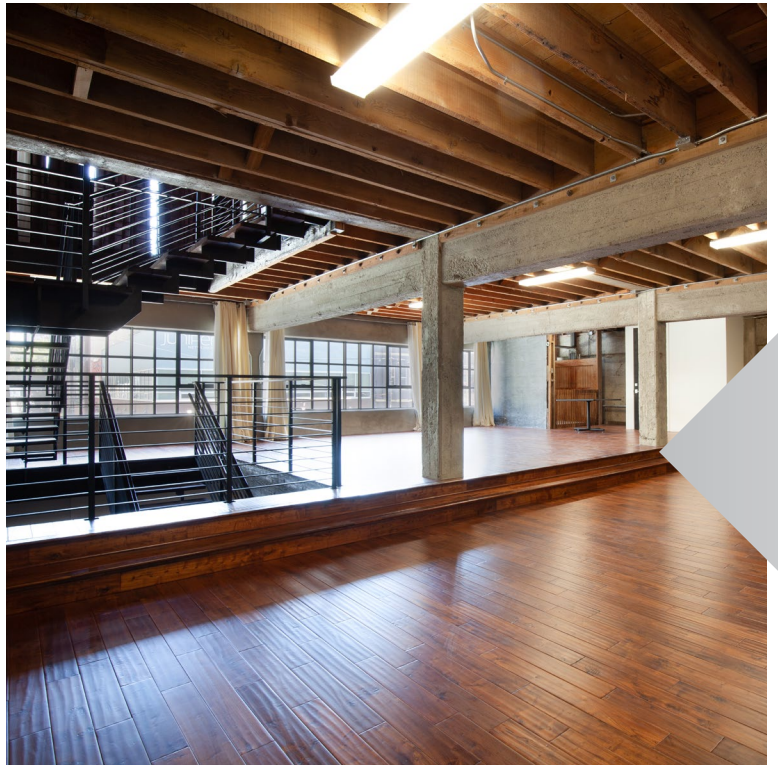
ABOUT THE PROPERTY

520 Bryant is a three-story building including a parking garage. Built in 1924, this centrally located building in SOMA is within walking distance to Oracle Ball Park, Freeway, Bay Bridge, transportation and many popular neighborhood amenities.

DETAILS

- 7,025 SF
- Zoning: Office
- High Quality Build Out
- 6 Conference Rooms/Private Offices
- Abundant Natural Light
- Skylights
- Full Luxury Kitchen and Stainless Steel Appliances
- Hardwood Floor Throughout
- Exclusive Parking Garage
- Asking: \$90.00 IG
- Available Now





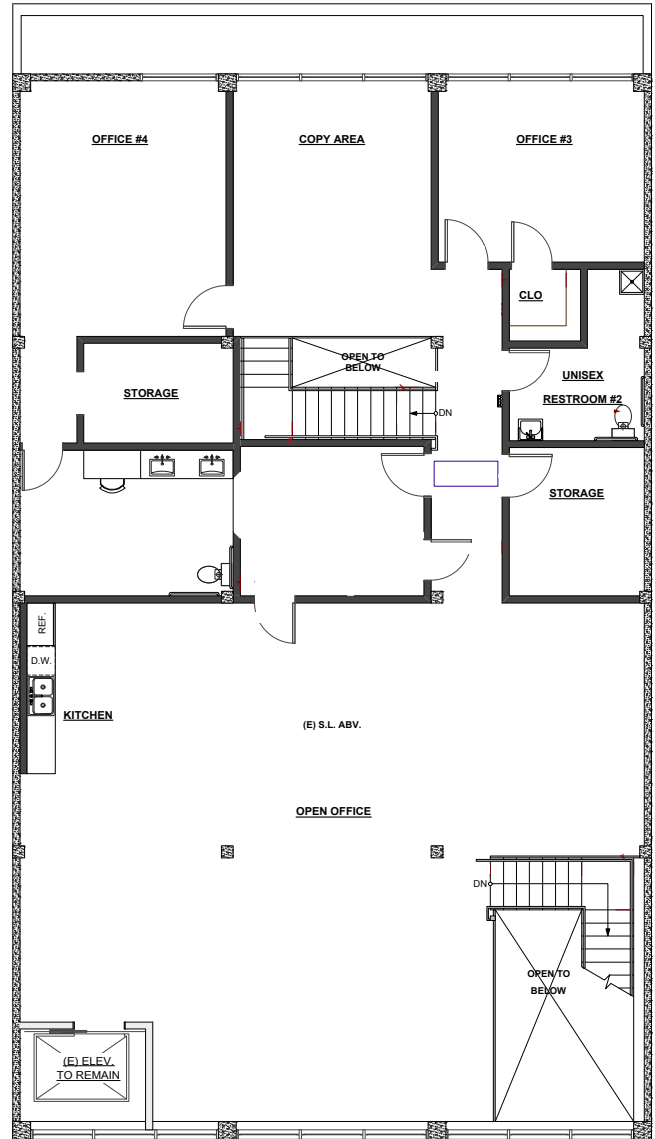
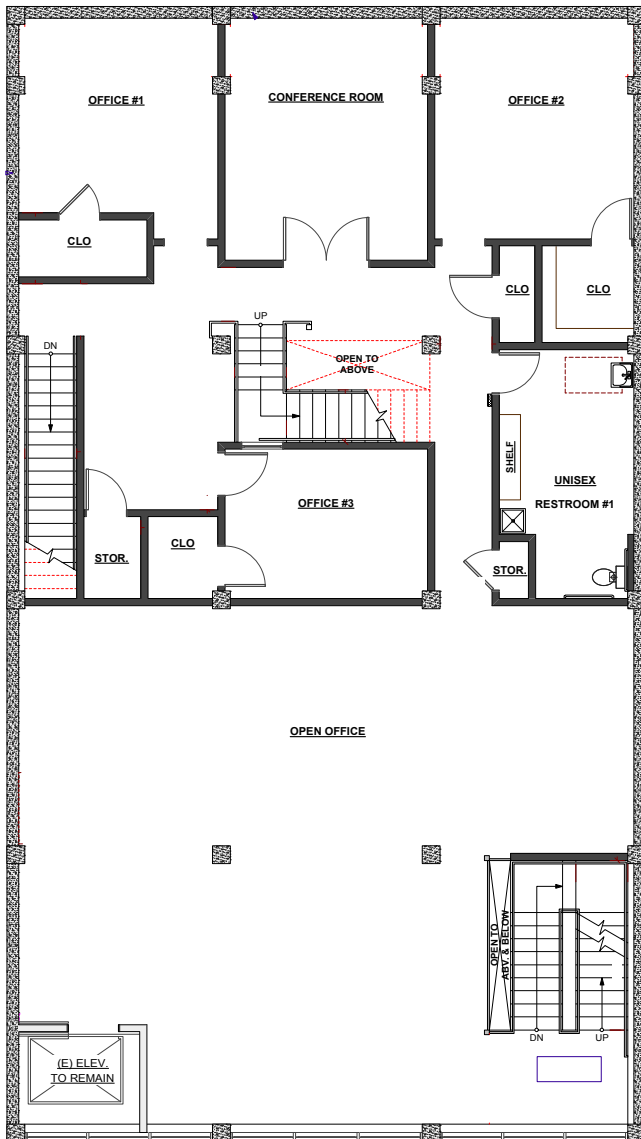
520 BRYANT

FULL BUILDING OPPORTUNITY

FLOOR PLANS

2ND FLOOR | 3,514 RSF

3RD FLOOR | 3,511 RSF



CONTACT

MIKE MCCARTHY

LIC# 00929942

mike.mccarthy@transwestern.com

415.489.1756

BRIAN MCCARTHY

LIC# 01840990

brian.mccarthy@transwestern.com

415.489.1753

MADDIE MEYERSIECK

LIC# 01961652

maddie.meyersieck@transwestern.com

415.489.1757