

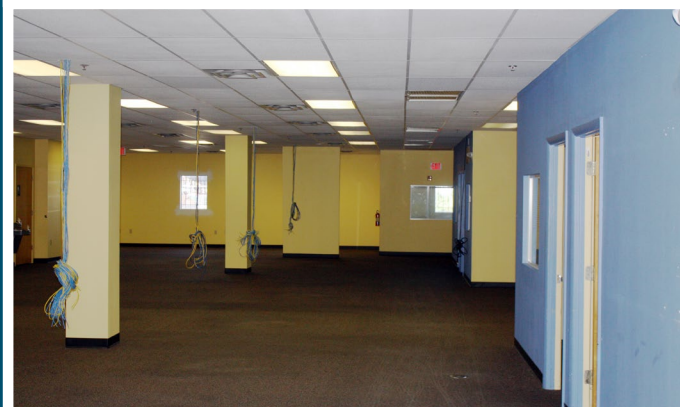
Office/Industrial Bldg For Sale



Office/Industrial Building

2140 W. Washington St. | Orlando, FL 32805

- 28,727 SF office building with additional adjacent 151 space parking lot
- Perfect for owner/user
- Excellent visibility and access
- Ideal location for government office, medical service providers, or call centers
- Located in the heart of Orlando with easy access to I-4, 408, John Young Parkway and Colonial Drive
- Financing available
- Available for sale or lease with option to purchase



ALEX ROWLINSON
T: 407-691-0505
arowlinson@holdthyssen.com

301 S. New York Avenue
Suite 200
Winter Park, FL 32789

www.holdthyssen.com

AERIAL



DEMOGRAPHICS

2015	1-Mile	3-Mile	5-Mile
Total Population	6,469	90,296	320,147
Total Households	2,442	35,783	124,163
Male Population	3,155	43,740	158,072
Female Population	3,314	46,556	162,075
% Population Change 2010-2015	4.78%	9.13%	8.77%
% Household Change 2010-2015	2.01%	6.13%	4.77%
Median Age	42	36	34
Median Household Income	\$29,113	\$35,723	\$38,736
Average Household Income	\$49,578	\$55,703	\$56,112
Per Capita Income	\$19,493	\$22,929	\$22,350

The information above has been obtained from sources believed reliable. While we do not doubt its accuracy we make no guarantee, warranty or representation about it. It is your responsibility to independently confirm its accuracy and completeness. Any projections, opinions, assumptions, or estimates used are for example only and do not represent the current or future performance of the property. Hold-Thyssen, Inc. is a licensed real estate broker.

FOR MORE INFORMATION:



ALEX ROWLINSON

arowlinson@holdthyssen.com
T: 407-691-0505

301 S. New York Ave.
Suite 200
Winter Park, FL 32789



www.holdthyssen.com