



FOR LEASE
4376 Forestdale Drive, Unit 6
 Park City, Utah 84098



FOR LEASE
4376 Forestdale Drive, Unit 6
 Park City, Utah 84098



Synergy Commons - Industrial Office Flex Space

Property Highlights

- Price: \$18/NNN
- 3,760 sf available
- Tenant improvement allowance available
- Zoned community commercial
- End unit with unobstructed views
- Radiant floor heat
- Main level 1,950 sf / 2nd level 1,810 sf
- 200 amp service
- Two stories with 15' clear on main level
- 14' x 14' overhead garage door

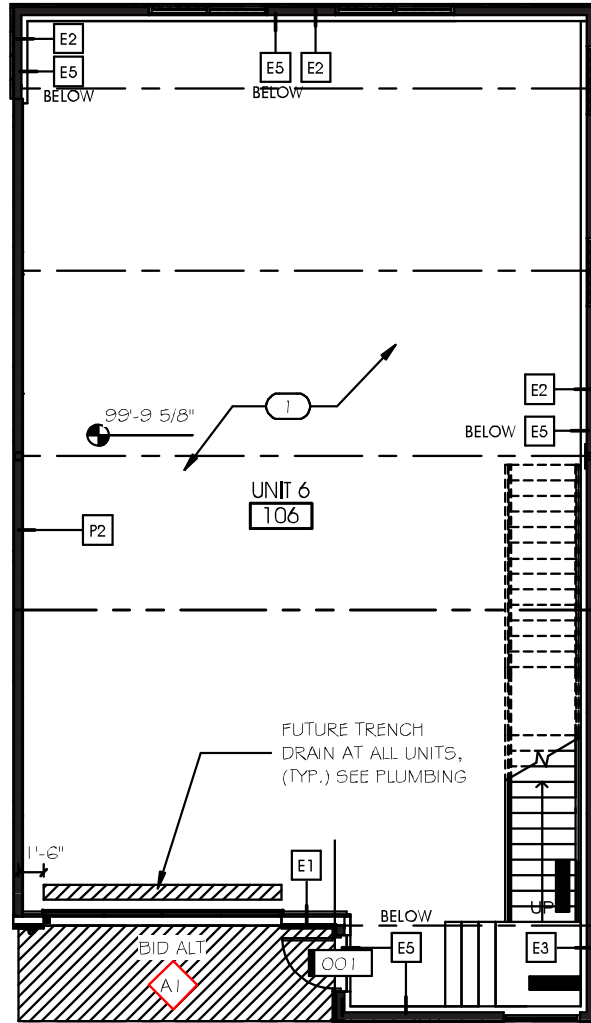
Tim Anker
 Managing Broker
 +1 435 575 5630
 tim.anker@cushwake.com

1794 Olympic Parkway, Suite 130
 Park City, Utah 84098
 Main +1 435 575 5600
 Fax +1 435 575 5640
 cushmanwakefield.com

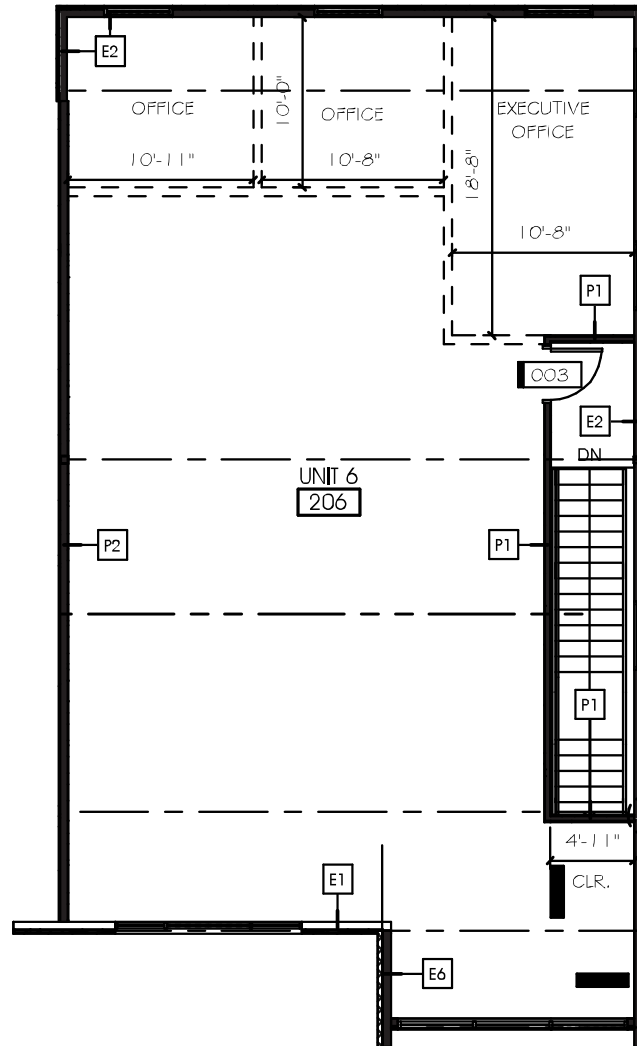
Tim Anker
 Managing Broker
 +1 435 575 5630
 tim.anker@cushwake.com

1794 Olympic Parkway, Suite 130
 Park City, Utah 84098
 Main +1 435 575 5600
 Fax +1 435 575 5640
 cushmanwakefield.com

Level 1



Level 2



Site Plan

