

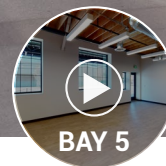
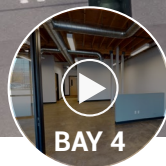
SODOROW

4786 FIRST AVENUE SOUTH | SEATTLE, WA

Creative Flex / Office / Industrial Space in the Heart of SODO

AVAILABLE NOW

202,621 SF TOTAL (DIVISIBLE TO 12,000 SF)

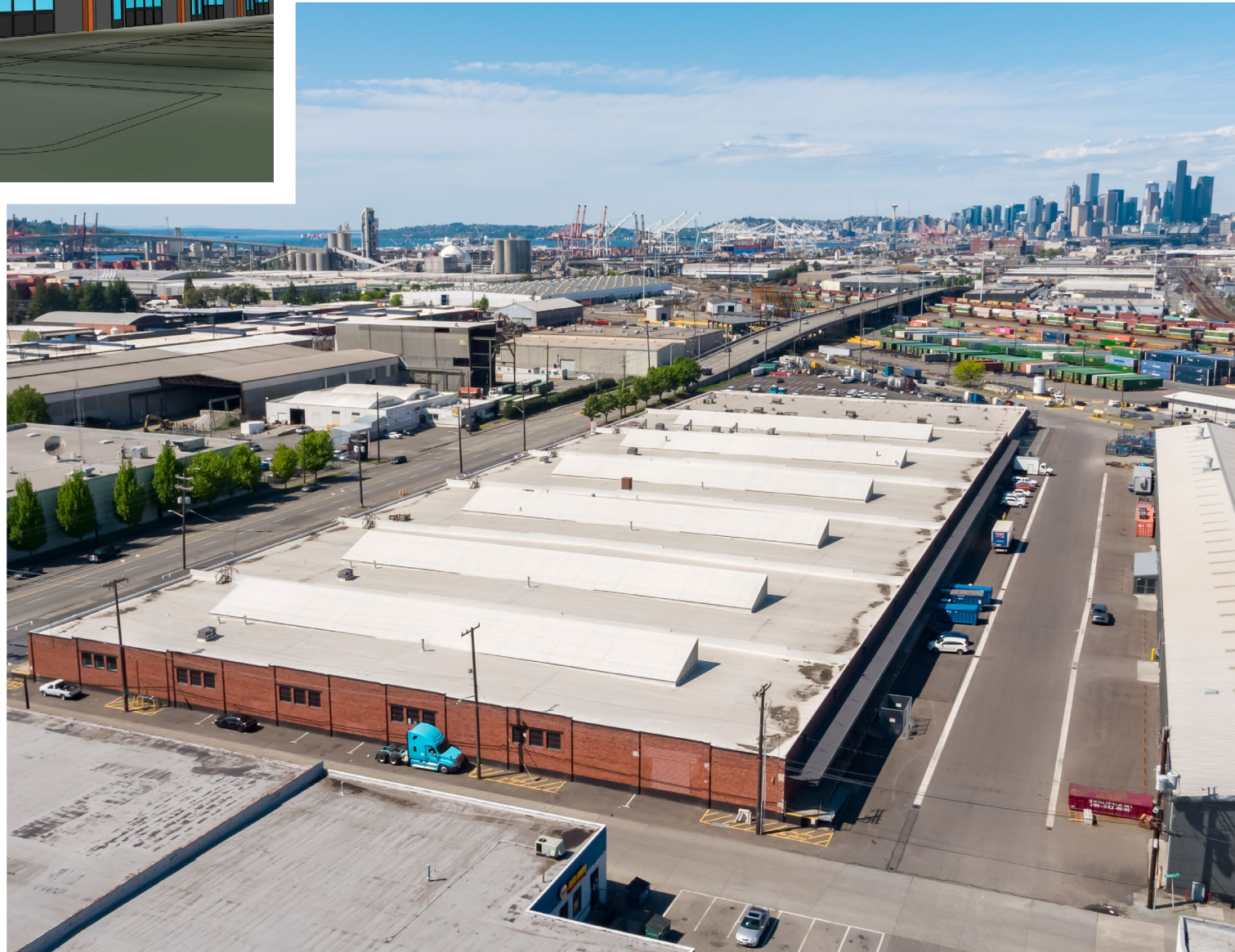


CLICK PLAY TO VIEW A VIRTUAL TOUR OF THE SPACE!



www.sodorowseattle.com

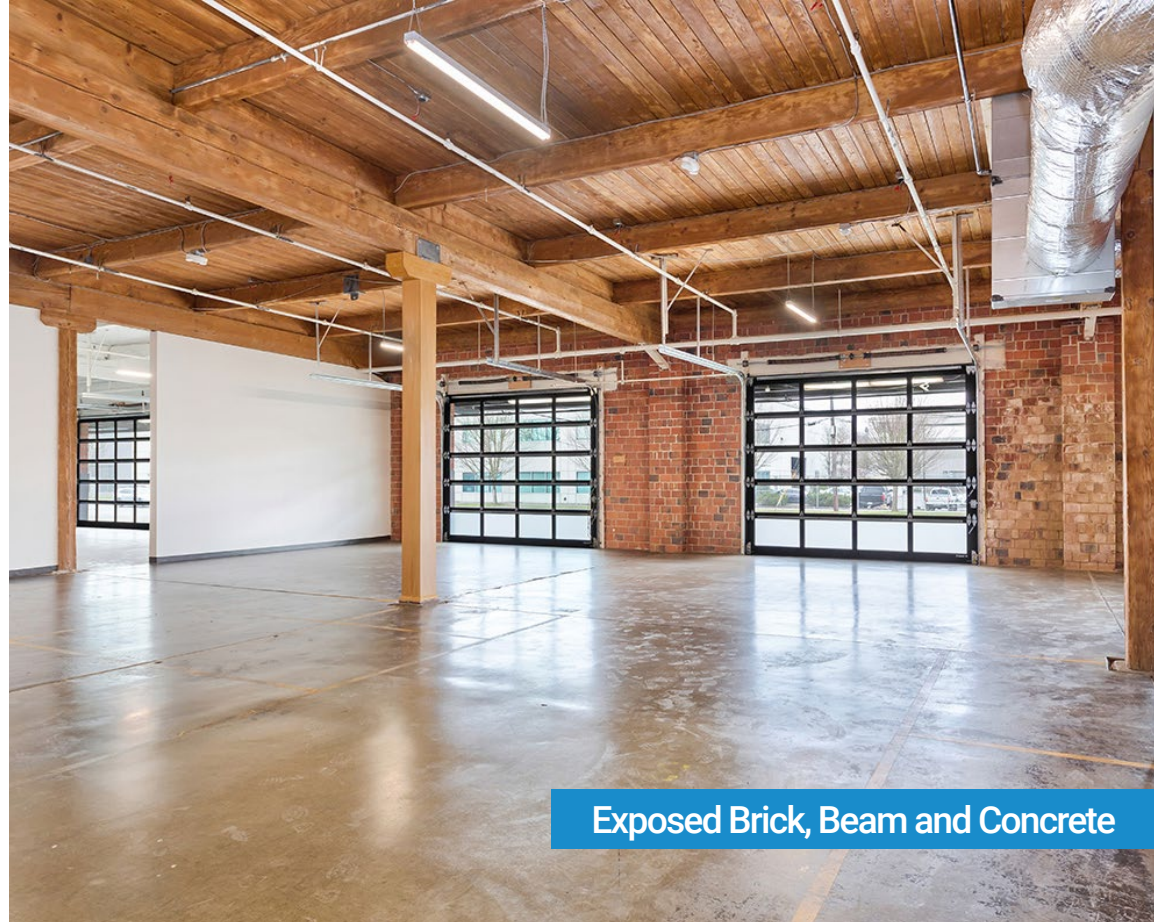
REDEFINED & REVITALIZED



BUILDING HIGHLIGHTS



High End Finishes Throughout



Exposed Brick, Beam and Concrete

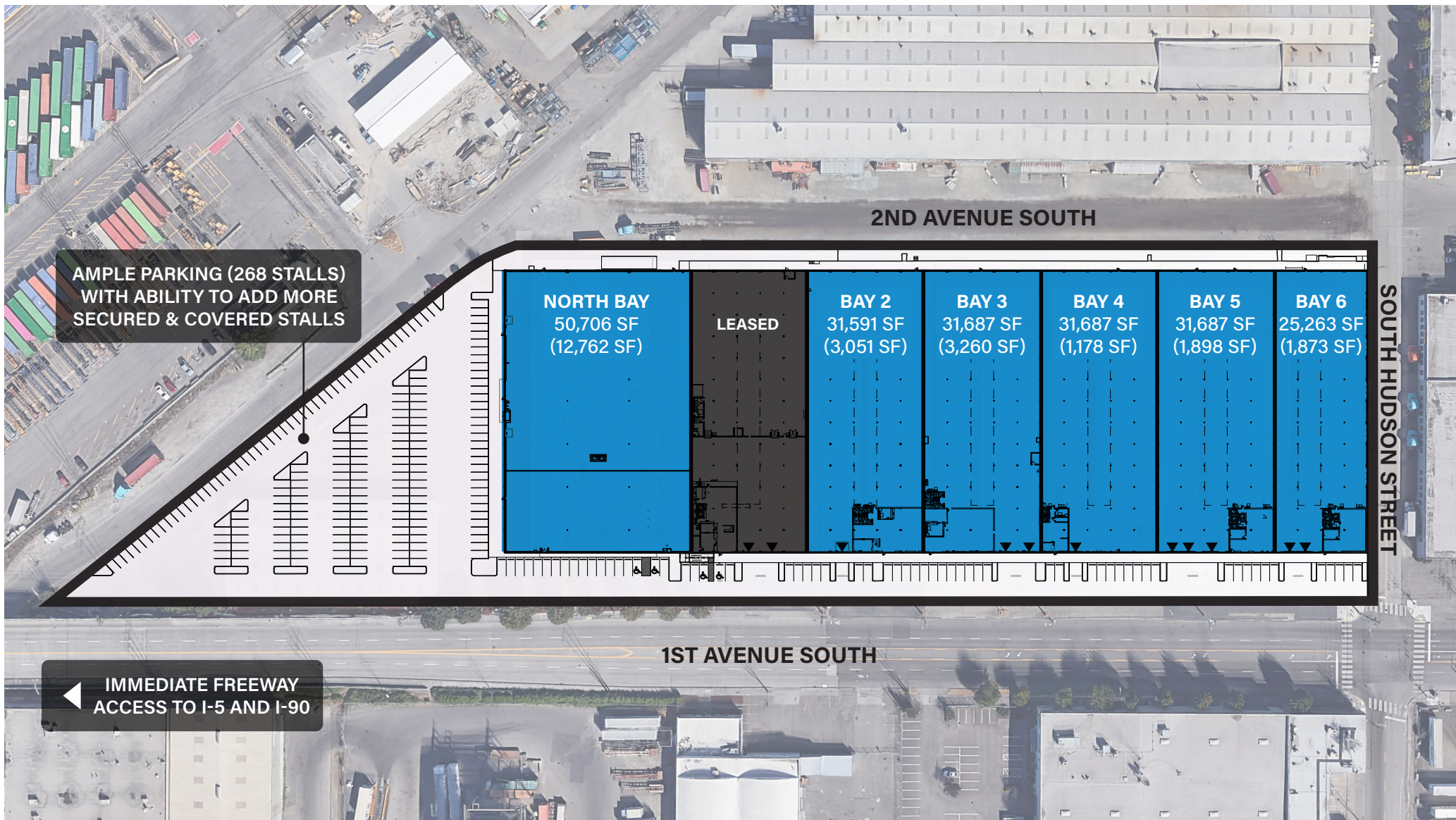


Abundant Natural Light



Creative Space & Flexible Configurations

SITE PLAN



TOTAL 202,621 SF AVAILABLE
(DIVISIBLE TO 12,000 SF)

LOCATION



- | | | | |
|---------------------------|----------------------|----------------------------|---------------------------|
| 1. Jack's BBQ | 7. Conscious Eatery | 13. Marco Polo Bar & Grill | 19. Monkey Loft |
| 2. Bread and Circuses | 8. Jack in the Box | 14. Dog House Bar & Grill | 20. Derby |
| 3. Hudson | 9. Burger King | 15. Two Beers Brewing Co | 21. Seattle Cider Company |
| 4. Starbucks Headquarters | 10. Soup Daddy Soups | 16. Elysian Taproom | 22. Starbucks |
| 5. Slims Last Chance | 11. Denny's | 17. Georgetown Brewing Co | |
| 6. Subway | 12. Fonda La Catrina | 18. Seapine Brewing | |

SODOROW

4786 FIRST AVENUE SOUTH | SEATTLE, WA
www.sodorowseattle.com

THAD MALLORY, SIOR
Vice Chairman
425.362.1410
thad.mallory@ngkf.com

TAYLOR HOFF, SIOR
Senior Managing Director
425.362.1388
taylor.hoff@ngkf.com

CAM WARREN
Associate Director
425.362.1395
cam.warren@ngkf.com

BLAKE BENTZ
Associate
425.362.1391
blake.bentz@ngkf.com

JESSE OTTELE
Executive Managing Director
206.452.4529
jesse.ottele@ngkf.com

