



2801 W. I-240 Service Road
Oklahoma City, Oklahoma 73159

PROPERTY HIGHLIGHTS

- Renovated in 2016
- Equipped with Vent Hood
- Walk-In Cooler
- Pylon Sign Available

LOCATION HIGHLIGHTS

- Fronts on I-240
- Close to Oklahoma City Community College (22,000+ Students)
- Easy Access to I-44 & I-240
- Proximity to Will Rogers World Airport



TOTAL SF	4,500 SF MOL
LAND IN ACRES	0.91 MOL
ZONING	C-3
BUILT	1979

www.naisullivangroup.com

David Hartnack / Sam Swanson / Nathan Wilson

David's Cell: 1 405 761 8955
 Sam's Cell: 1 405 208 2046
 Nathan's Cell: 1 405 760 5327
davidh@naisullivangroup.com
sam@naisullivangroup.com
nathan@naisullivangroup.com

4045 N.W. 64th Street, Suite 340
 Oklahoma City, Oklahoma 73116
 Office: 1 405 840 0600
 Fax: 1 405 840 0610

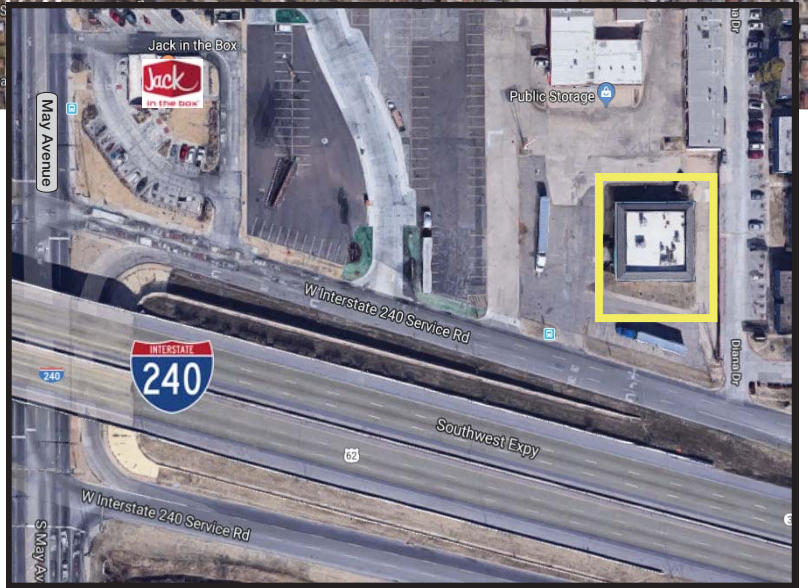
NO WARRANTY OR REPRESENTATION, EXPRESS OR IMPLIED, IS MADE AS TO THE ACCURACY OF THE INFORMATION CONTAINED HEREIN, AND THE SAME IS SUBMITTED SUBJECT TO ERRORS, OMISSIONS, CHANGE OF PRICE, RENTAL OR OTHER CONDITIONS, PRIOR SALE, LEASE OR FINANCING, OR WITHDRAWAL WITHOUT NOTICE, AND OF ANY SPECIAL LISTING CONDITIONS IMPOSED BY OUR PRINCIPALS NO WARRANTIES OR REPRESENTATIONS ARE MADE AS TO THE CONDITION OF THE PROPERTY OR ANY HAZARDS CONTAINED THEREIN ARE ANY TO BE IMPLIED.

2801 W. I-240 Service Road
Oklahoma City, OK 73159



DEMOGRAPHICS

Population		
1 Mile: 13,280	3 Mile: 92,291	5 Mile: 185,038
Average Household Income		
1 Mile: \$41,001	3 Mile: \$41,572	5 Mile: \$42,704
Total Households		
1 Mile: 5,185	3 Mile: 34,987	5 Mile: 68,567



David Hartnack / Sam Swanson / Nathan Wilson

David's Cell: 1 405 761 8955
Sam's Cell: 1 405 208 2046
Nathan's Cell: 1 405 760 5327
davidh@naisullivangroup.com
sam@naisullivangroup.com
nathan@naisullivangroup.com

4045 N.W. 64th Street, Suite 340
Oklahoma City, Oklahoma 73116
Office: 1 405 840 0600
Fax: 1 405 840 0610

www.naisullivangroup.com

NAISullivan Group