



Retail For Lease
1,440 SF-4,956 SF
Short Term Lease
Opportunity



545 South Broadway

Denver, Colorado 80209

Property Overview

- Fully built out retail suites for lease with prominent signage facing South Broadway
- Spaces ranging in size from 1,440 SF to 4,956 SF and can be combined for a total of 3,737 SF
- SHORT TERM LEASING OPPORTUNITIES AVAILABLE
- TOD site proximate to Alameda & Broadway Light Rail Stations with easy access to I-25
- Denver Design District, Washington Park, and Baker neighborhoods nearby
- Located at the entrance of the 75 acre, mixed-use redevelopment of Broadway Park® (formerly known as Denver Design District®)

Contact Broker for Lease Rates

NO WARRANTY OR REPRESENTATION, EXPRESS OR IMPLIED, IS MADE AS TO THE ACCURACY OF THE INFORMATION CONTAINED HEREIN, AND THE SAME IS SUBMITTED SUBJECT TO ERRORS, OMISSIONS, CHANGE OF PRICE, RENTAL OR OTHER CONDITIONS, PRIOR SALE, LEASE OR FINANCING, OR WITHDRAWAL WITHOUT NOTICE, AND OF ANY SPECIAL LISTING CONDITIONS IMPOSED BY OUR PRINCIPALS NO WARRANTIES OR REPRESENTATIONS ARE MADE AS TO THE CONDITION OF THE PROPERTY OR ANY HAZARDS CONTAINED THEREIN ARE ANY TO BE IMPLIED.

Property Facts

Available SF:	1,440 SF - 4,956 SF
Building Size:	17,483 SF
Year Built / Renov.:	1996
Walk Score:	Very Walkable (77)
Transit Score:	Excellent Transit (71)

www.BroadwayPark.com

For more information:

Cory Dulberg

303 565 3039

cdulberg@shamesmakovsky.com

1400 Glenarm Place, Suite 100

Denver, CO 80202

303 534 5005

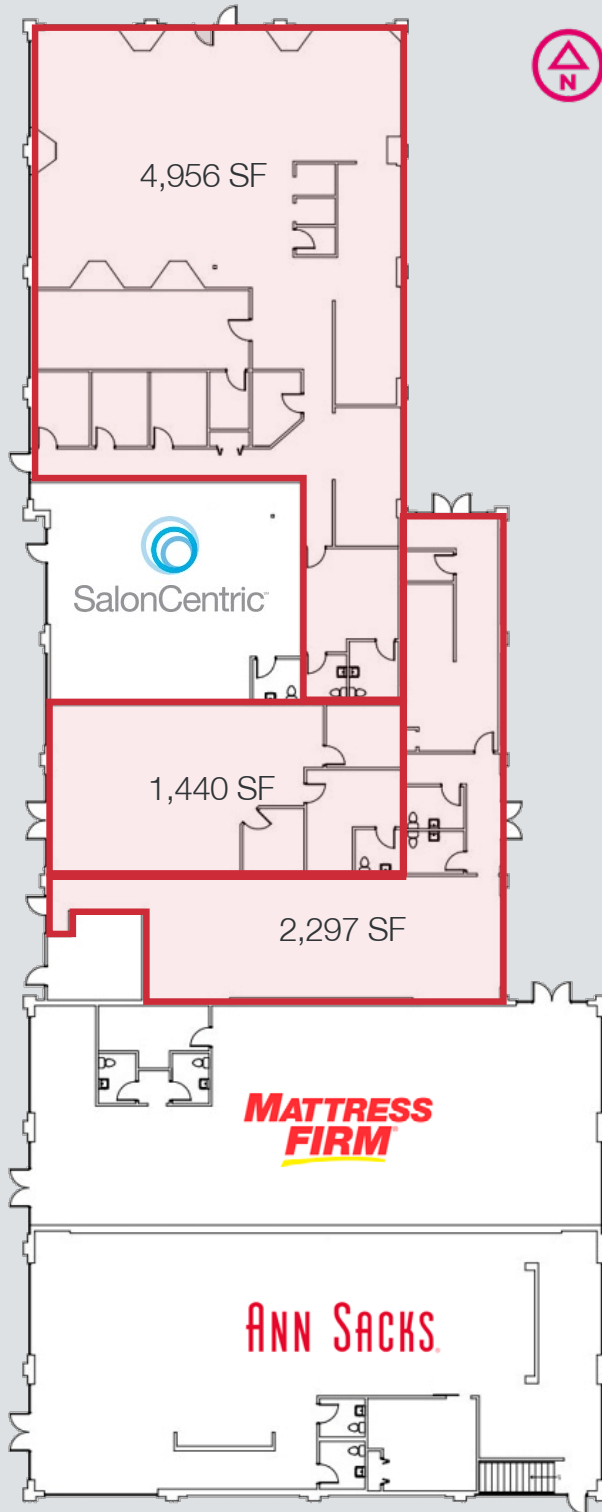
naishamesmakovsky.com

Retail For Lease

1,440 SF-4,956 SF

Short Term Lease

Opportunity



1400 Glenarm Place, Suite 100

Denver, CO 80202

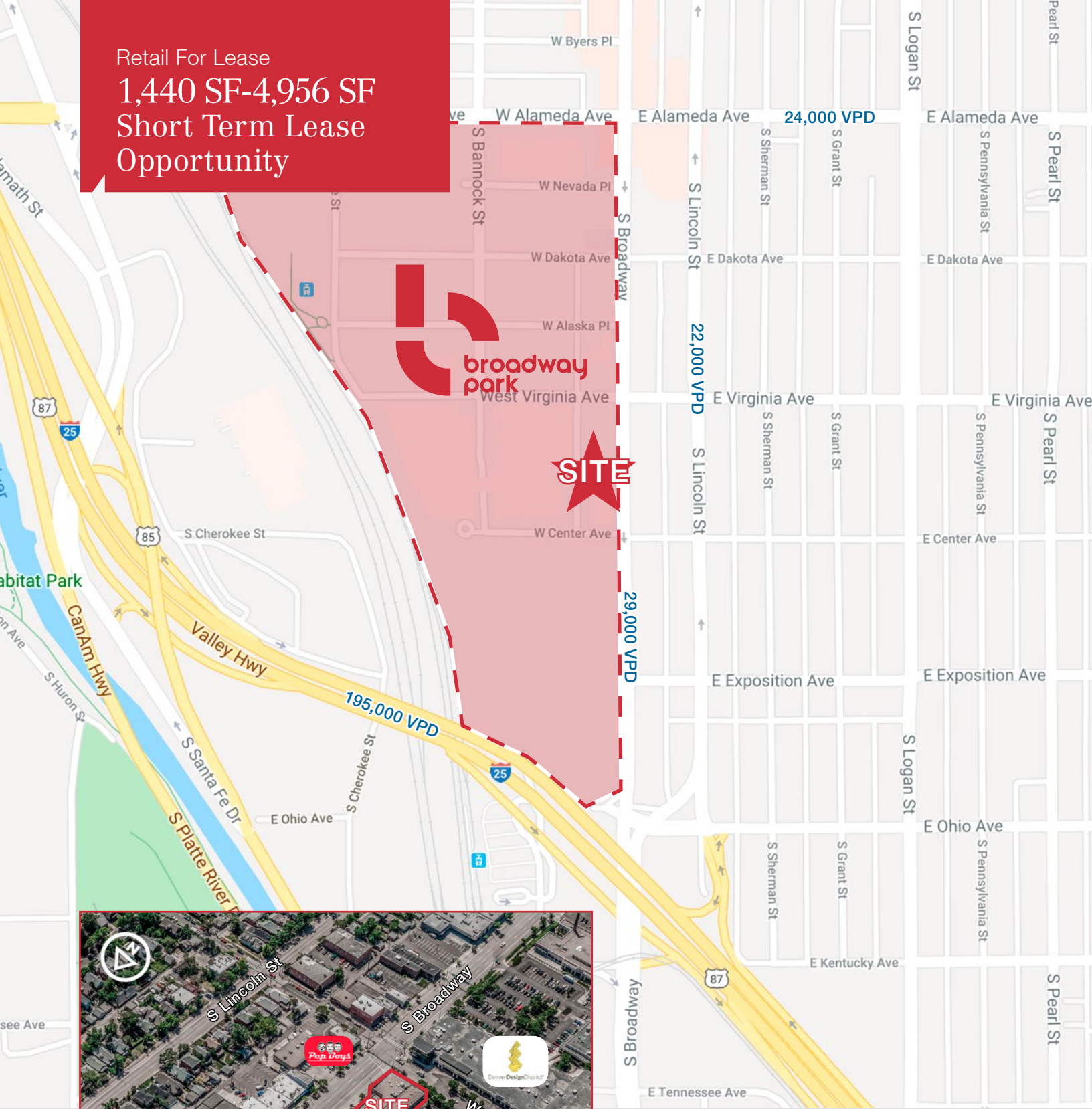
303 534 5005

naishamesmakovsky.com



For more information:
Cory Dulberg
303 565 3039
cdulberg@shamesmakovsky.com

Retail For Lease
1,440 SF-4,956 SF
 Short Term Lease
 Opportunity



For more information:

Cory Dulberg
 303 565 3039
 cdulberg@shamesmakovsky.com

1400 Glenarm Place, Suite 100
 Denver, CO 80202
 303 534 5005

naishamesmakovsky.com