

# VENTURE

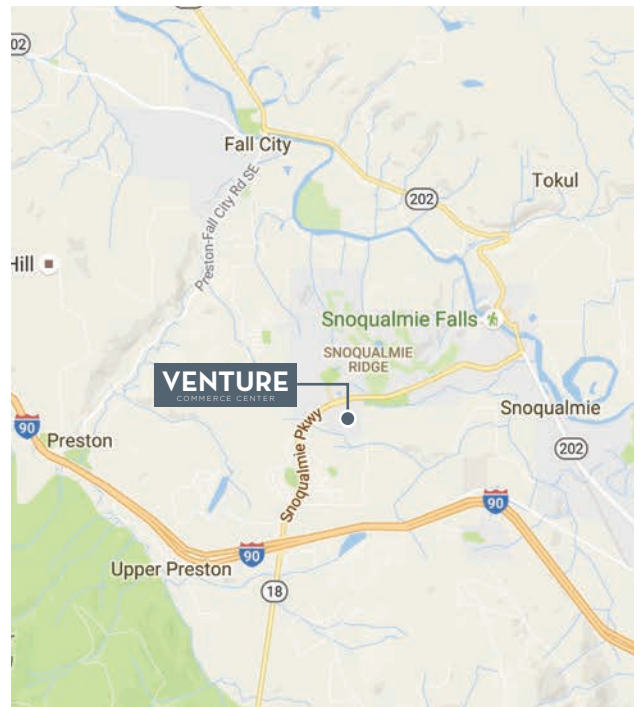
## COMMERCE CENTER

35312 SE Center Street • Snoqualmie, WA 98065



### BUILDING FEATURES

- Located within the greater Snoqualmie Ridge Business Park
- Furniture can be included
- Fully furnished and air-conditioned, one ADA bathroom, 200-amp electric service
- Corner unit, lots of natural light
- Two dedicated parking spaces
- Easy access to I-90, SR-18 and SR-202
- Open floor plan with tall ceilings



Commercial Real Estate Services

10500 NE 8<sup>th</sup> Street, Suite 900  
Bellevue, WA 98004  
main | 425.646.3444  
[www.broderickgroup.com](http://www.broderickgroup.com)

For more information or to schedule a tour, please contact:

**CONNOR GILCHRIST**  
425.274.4286  
[gilchrist@broderickgroup.com](mailto:gilchrist@broderickgroup.com)

**TYLER SLONE**  
425.274.4281  
[slone@broderickgroup.com](mailto:slone@broderickgroup.com)

The information contained herein has been given to us by the owner or other sources that we deem reliable. We have no reason to doubt its accuracy. All prospective tenants should carefully verify the information contained herein.

# VENTURE

## COMMERCE CENTER

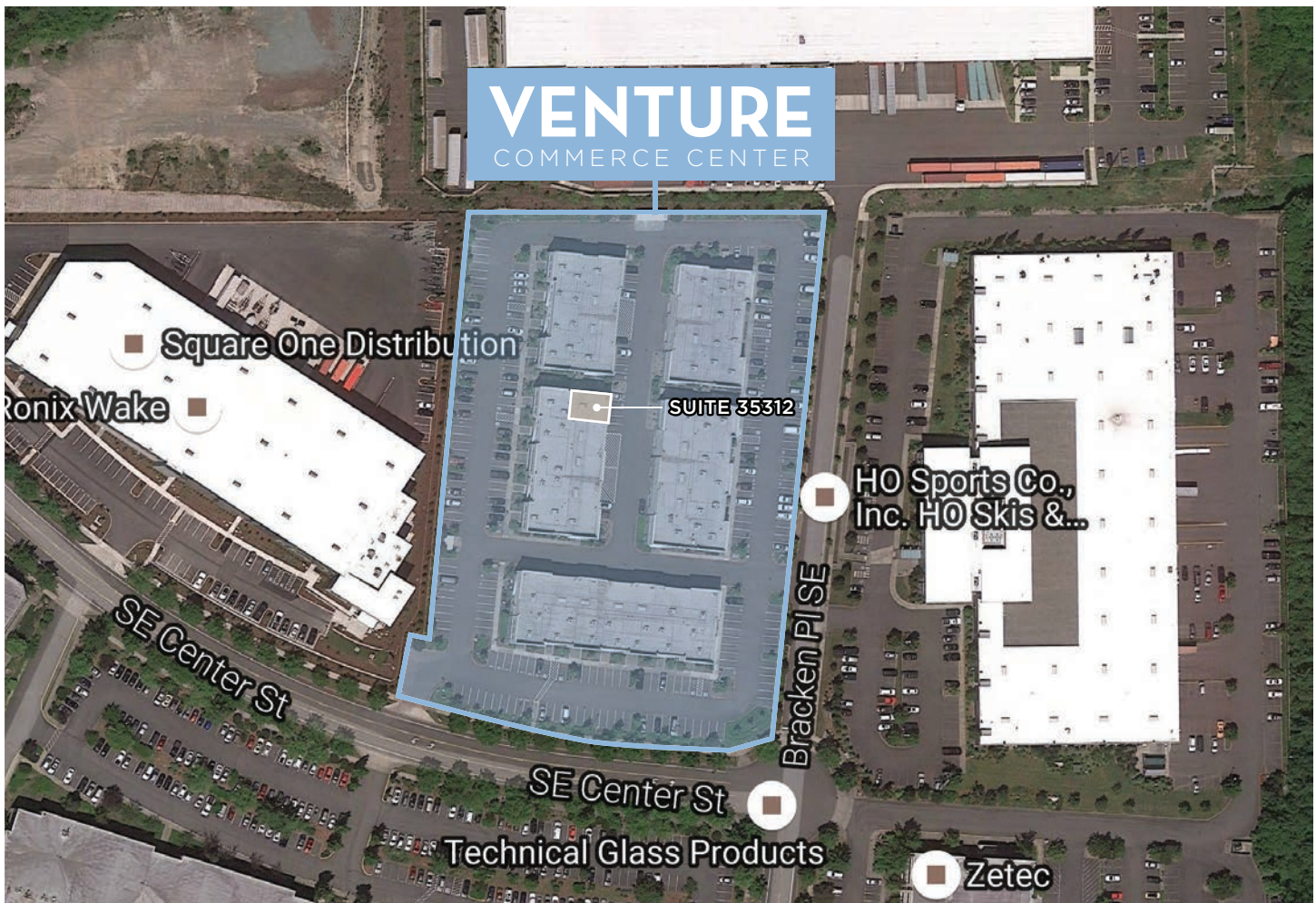
35312 SE Center Street • Snoqualmie, WA 98065

### AVAILABLE SPACE

FLOOR / SUITE	AVAIL. DATE	CONDO SF	SALE	LEASE	COMMENTS
1 / 35312	Available Now	1,218 RSF	\$380,000	\$20.00/SF, NNN	Fully furnished office space available for sale or lease

\* Lease commission based on base rent

### AERIAL MAP



Commercial Real Estate Services

10500 NE 8<sup>th</sup> Street, Suite 900  
 Bellevue, WA 98004  
 main | 425.646.3444  
[www.broderickgroup.com](http://www.broderickgroup.com)

For more information or to schedule a tour, please contact:

**CONNOR GILCHRIST**  
 425.274.4286  
[gilchrist@broderickgroup.com](mailto:gilchrist@broderickgroup.com)

**TYLER SLONE**  
 425.274.4281  
[slone@broderickgroup.com](mailto:slone@broderickgroup.com)

The information contained herein has been given to us by the owner or other sources that we deem reliable. We have no reason to doubt its accuracy. All prospective tenants should carefully verify the information contained herein.

# VENTURE

## COMMERCE CENTER

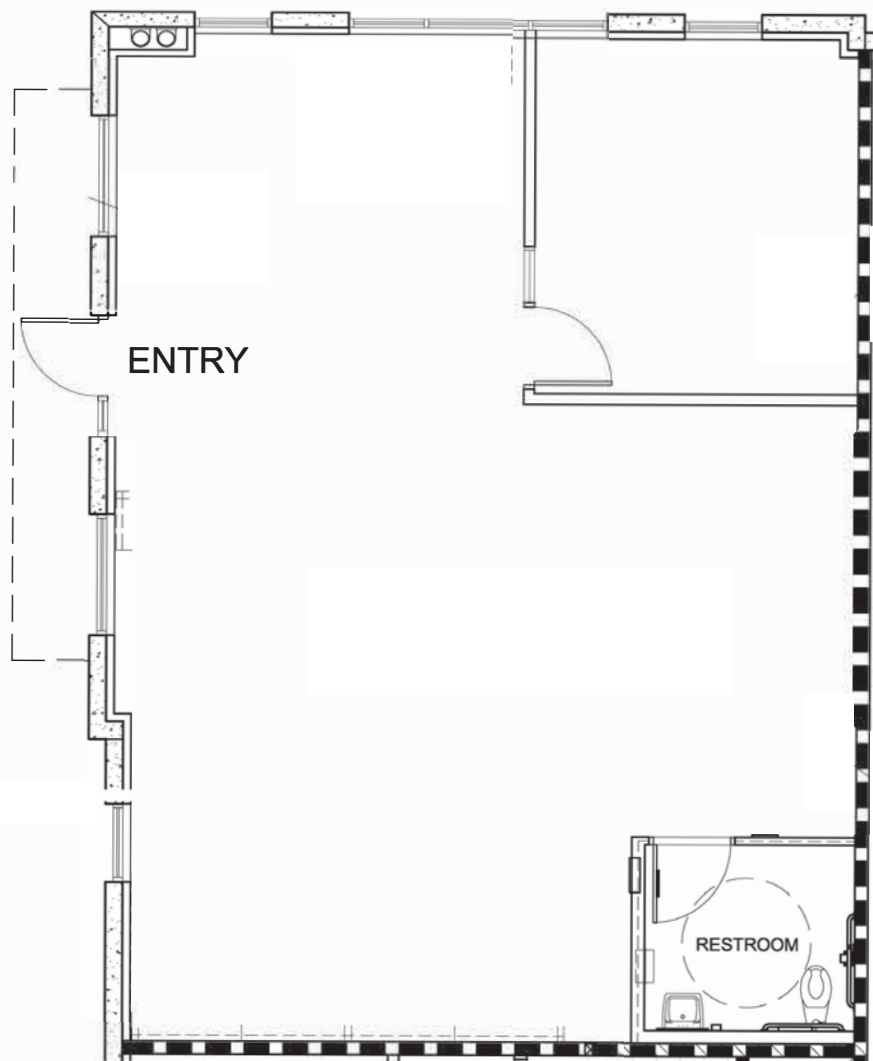
35312 SE Center Street • Snoqualmie, WA 98065

### FLOOR PLAN

Suite 35312

1,218 RSF

Available Now



Commercial Real Estate Services

10500 NE 8<sup>th</sup> Street, Suite 900  
Bellevue, WA 98004  
main | 425.646.3444  
[www.broderickgroup.com](http://www.broderickgroup.com)

For more information or to schedule a tour, please contact:

**CONNOR GILCHRIST**  
425.274.4286  
[gilchrist@broderickgroup.com](mailto:gilchrist@broderickgroup.com)

**TYLER SLONE**  
425.274.4281  
[slone@broderickgroup.com](mailto:slone@broderickgroup.com)

The information contained herein has been given to us by the owner or other sources that we deem reliable. We have no reason to doubt its accuracy. All prospective tenants should carefully verify the information contained herein.

# VENTURE

## COMMERCE CENTER

35312 SE Center Street • Snoqualmie, WA 98065

### PHOTOS



Commercial Real Estate Services

10500 NE 8<sup>th</sup> Street, Suite 900  
Bellevue, WA 98004  
main | 425.646.3444  
[www.broderickgroup.com](http://www.broderickgroup.com)

For more information or to schedule a tour, please contact:

**CONNOR GILCHRIST**  
425.274.4286  
[gilchrist@broderickgroup.com](mailto:gilchrist@broderickgroup.com)

**TYLER SLONE**  
425.274.4281  
[slone@broderickgroup.com](mailto:slone@broderickgroup.com)

*The information contained herein has been given to us by the owner or other sources that we deem reliable. We have no reason to doubt its accuracy. All prospective tenants should carefully verify the information contained herein.*