

FOR SALE –PAD SITE

3.4 AC NW HWY & EXECUTIVE DR. DALLAS, TX

- Zoned Commercial
- 1 mile west of LBJ Freeway
- National & Local retailers at intersection
- Visibility from Northwest Hwy 40,000+ cars per day
- CALL FOR PRICE



LOCATION:

NE quadrant of Northwest Highway and Executive Drive. Located in front of Sam's Club & Fry's Electronics. This intersection also includes Wendy's, Whataburger, Sonic, and Christian Bro's Automotive

DEMOGRAPHICS (2015):

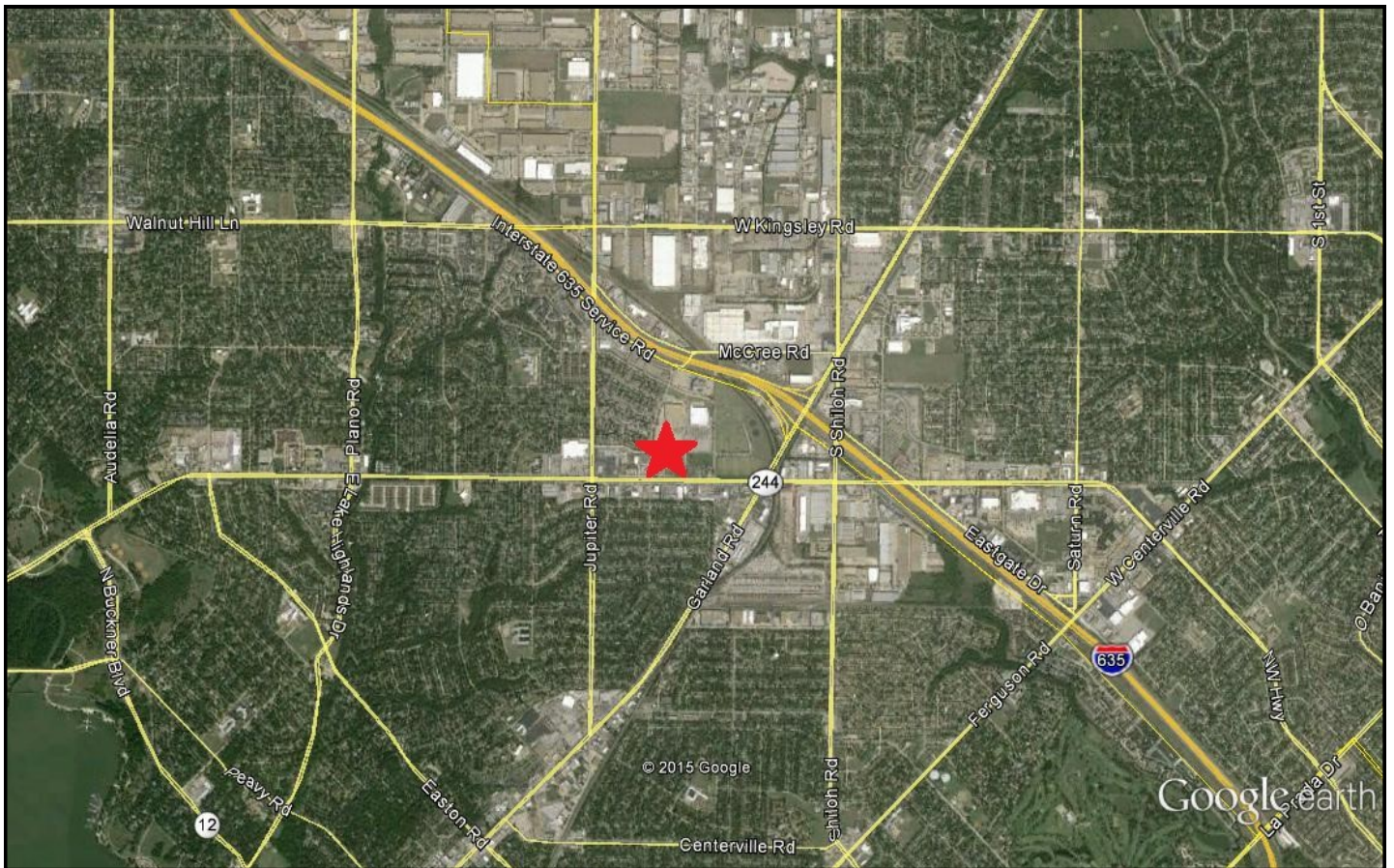
	1 Mile	3 Mile
Total Population:	12,183	118,839

For More Information contact:

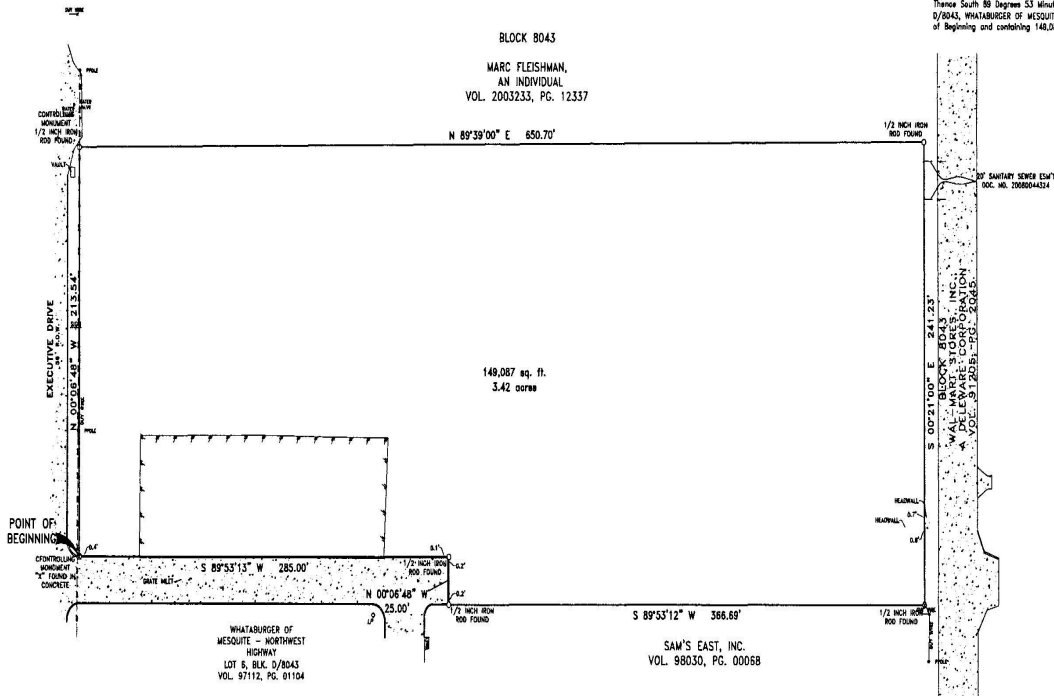
Jeremy A. Gray at 214.220.0101 ext.23 or
jgray@grayandcorealtors.com

GRAY & CO REALTORS, INC.
4305 MacArthur Ave.
Dallas, TX 75209
Phone: 214.220.0101
Fax: 214.220.0596
www.grayandcorealtors.com

The information contained herein is from sources deemed reliable; however, Gray & Co Realtors, Inc. makes no representations or warranties as to the accuracy hereof.







Thence South 89 Degrees 53 Minutes 13 Seconds West, along the North line of said Lot 6, Block D/2043, WHATABURGER OF MESQUITE - NORTHWEST HIGHWAY, a distance of 285.00 feet to the Point of Beginning and containing 140,087 square feet or 3.42 acres of land.

FINAL SURVEY	
HINSON C. DAVIS SURVEY, ABSTRACT NO. 410	
CITY OF DALLAS, DALLAS COUNTY, TEXAS	
205 EXECUTIVE DRIVE	