

# ANSON COMMERCIAL/ RETAIL SITES

I-65 & Whitestown Parkway Whitestown, IN 46075



MIDLAND ATLANTIC  
PROPERTIES



## PROPERTY OVERVIEW

+/- 8 acres available for sale, lease or build-to-suit located along I-65 and Whitestown Parkway. This site is adjacent to a new 300,000+/- square foot retail development, Shoppes at Whitestown, anchored by Hobby Lobby, Burlington Coat Factory, TJ Maxx, ULTA, Ross Stores and others.

## PROPERTY HIGHLIGHTS

- +/- 8 Acre Anson Development: Sites Available For Sale, Lease or Build-to-Suit
- Outlots Available
- Site Offers Excellent Interstate Visibility and Multiple Interstate Pylon Signage Opportunities
- Whitestown is One of the Fastest Growing Communities in Indiana
- New Shared Access Road Recently Completed
- All Utilities and Storm Water Retention Systems in Place

## DEMOGRAPHICS 3 MILES 5 MILES

	3 MILES	5 MILES
Total Population	16,202	38,020
Average HH Income	\$130,144	\$147,621
Businesses	467	1,453
Employees	4,491	10,526

## TRAFFIC COUNTS

Whitestown Parkway	25,269
Interstate 65	84,777



## MIDLAND ATLANTIC PROPERTIES

Indianapolis Office  
3801 East 82nd Street, Suite B  
Indianapolis, IN 46240

MIDLANDATLANTIC.COM

## PATRICK BOYLE

Direct: 317.597.1718  
Cell: 317.679.6322  
pjboyle@midlandatlantic.us

## SHAWN HEFFERN

Direct: 317.597.1715  
Cell: 317.695.8938  
sheffern@midlandatlantic.us

DEVELOPMENT • BROKERAGE • ACQUISITIONS • MANAGEMENT

Information contained herein has been obtained from sources deemed reliable but is not guaranteed and is subject to change without notice.

# ANSON COMMERCIAL/ RETAIL SITES

I-65 & Whitestown Parkway Whitestown, IN 46075



MIDLAND ATLANTIC  
PROPERTIES



**HOBBY  
LOBBY**

**Harmony  
Steakhouse**

**PERRY WORTH ROAD**



# ANSON COMMERCIAL/ RETAIL SITES

I-65 & Whitestown Parkway Whitestown, IN 46075



MIDLAND ATLANTIC  
PROPERTIES





# ANSON COMMERCIAL/ RETAIL SITES

I-65 & Whitestown Parkway Whitestown, IN 46075



MIDLAND ATLANTIC  
PROPERTIES



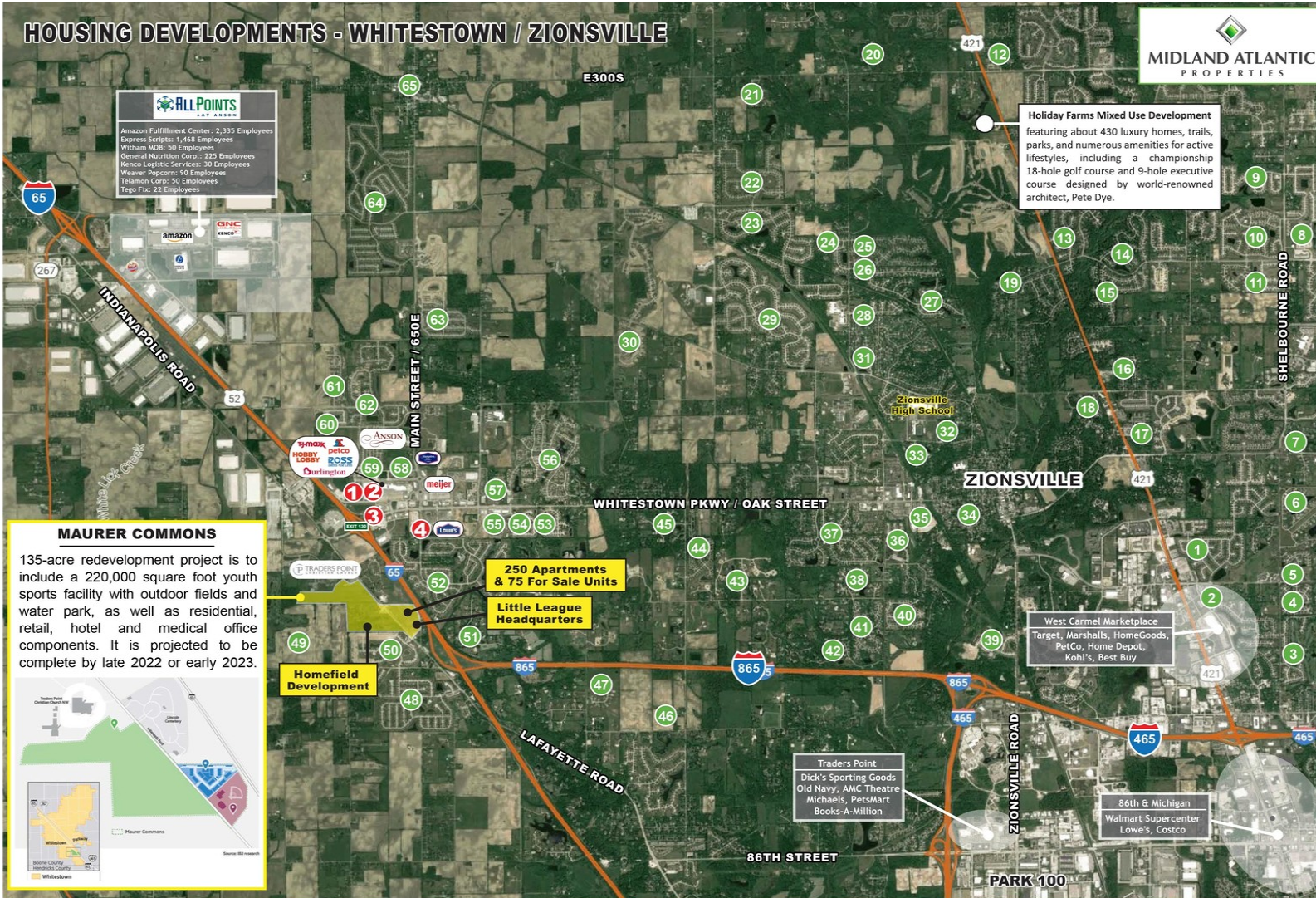
# ANSON COMMERCIAL/ RETAIL SITES

I-65 & Whitestown Parkway Whitestown, IN 46075



MIDLAND ATLANTIC  
PROPERTIES

## HOUSING DEVELOPMENTS - WHITESTOWN / ZIONSVILLE



MAP #	DEVELOPMENT NAME	UNITS/LOTS TOTAL	UNITS/LOTS SOLD	AVERAGE PRICE
1	The Westons	370	370	\$150,000 - 300,000
2	Ashbrooke	122	122	\$300,000 - 500,000
3	Shelbourne Green	335	335	\$150,000 - 300,000
4	Huntersfield	50	50	\$500,000
5	English Oaks	50	45	\$500,000
6	Bridlebourne	66	62	\$500,000 - 2,500,000
7	Long Branch	300	300	\$300,000 - 500,000
8	Aberdeen Bend	100	100	\$150,000 - 300,000
9	Longridge Estates	180	98	\$300,000 - 500,000
10	Hayden Run	100	70	\$150,000 - 300,000
11	Claybourne Estates	100	70	\$150,000 - 300,000
12	The Willows	242	151	\$155,000 - 475,000
13	Britany Chase	300	300	\$300,000 - 500,000
14	Willow Ridge	300	300	\$1,000,000
15	Austin Oaks	300	300	\$500,000 +
16	Hunter Glen	125	125	\$190,000 - 225,000
17	Cass Estates	70	31	\$150,000 - 250,000
18	Lost Run Farm	21	17	\$1,000,000 - 5,000,000
19	Ravinia	49	49	\$500,000 +
20	St. Clair Estates	50	50	\$500,000 +
21	Woods on Huddersfield	11	11	\$500,000 +
22	Rock Bridge	217	212	\$250,000 - 350,000
23	The Preserve at Spring Knoll	257	257	\$300,000 - 500,000
24	Smith Meadow	58	58	\$500,000 +
25	Cedar Bend	123	123	\$150,000 - 300,000
26	Pleasantview	14	12	\$1,000,000
27	Villa Francesca	23	2	\$500,000 - 1,000,000
28	Buttontown Farm	47	47	\$300,000 - 500,000
29	Cobblestone Lakes	418	418	\$300,000 - 500,000
30	Hampshire	244	19	\$300,000 - 500,000
31	Mulberry Place	16	16	\$300,000 - 500,000
32	Bloor Woods	24	24	\$150,000 - 300,000
33	Benderfield	11	11	\$500,000 +
34	The Hawthornes	300	300	\$150,000 - 500,000
35	Manchester Square	141	141	\$200,000 - 500,000
36	Hunt Club	13	13	\$500,000 +
37	Thornhill	191	191	
38	Cliffden Pond	50	50	\$500,000 +
39	Vonterra	57	39	\$325,000 - 500,000
40	Huntington Woods	100	100	\$300,000 - 500,000
41	Fox Hollow	100	100	\$500,000 - 1,000,000
42	Irishman's Run	104	104	\$1,000,000 - 3,000,000
43	Oldfield	37	21	\$280,000 +
44	The Enclave	117	117	\$300,000 - 550,000
45	Shannon Springs	16	4	\$800,000 +
46	Copper Ridge	37	37	\$200,000 - 300,000
47	Cheval De Selle	19	15	\$500,000 +
48	Eagle's Nest	549	549	\$200,000 +
49	Golf Club of Indiana	571	0	
50	Westwood Landing	204	39	\$250,000 - 400,000
51	Old Hunt Club	20	20	\$500,000 +
52	Royal Run	700	700	\$350,000 - 2,000,000
53	Blackstone	100	100	\$300,000 - 400,000
54	Maple Grove	91	89	\$200,000 +
55	The Villas by Watermark	266	266	Rentals
56	Stonegate	349	315	\$150,000 - 300,000
57	Westhaven	182	182	Rentals
58	Townhomes at Anson	73	73	\$150,000 - 250,000
59	The Boulevard at Anson	293	293	Rentals
60	The Woodlands	360	93	Rentals
61	Edmonds Creek	107		\$180,000 - 225,000
62	Clark Neighborhoods at Anson	468	264	\$180,000 - 350,000
63	Harvest Park	300	130	\$190,000 - 250,000
64	Walker Farms	1100	750	\$100,000 - 175,000
65	Legacy Core	250	0	
<b>TOTAL</b>		<b>13,214</b>	<b>10,218</b>	

**1 SITES AVAILABLE FOR SALE, LEASE OR BUILD-TO-SUIT**

**OUTLOTS • RETAIL  
HOTEL • ENTERTAINMENT  
MEDICAL • OFFICE**

**2 THE SHoppes AT WHITESTOWN**  
300,000 Square Foot New Retail Development  
Opening Spring 2019

**3 THE SHoppes AT ANSON**  
Opening Summer 2018

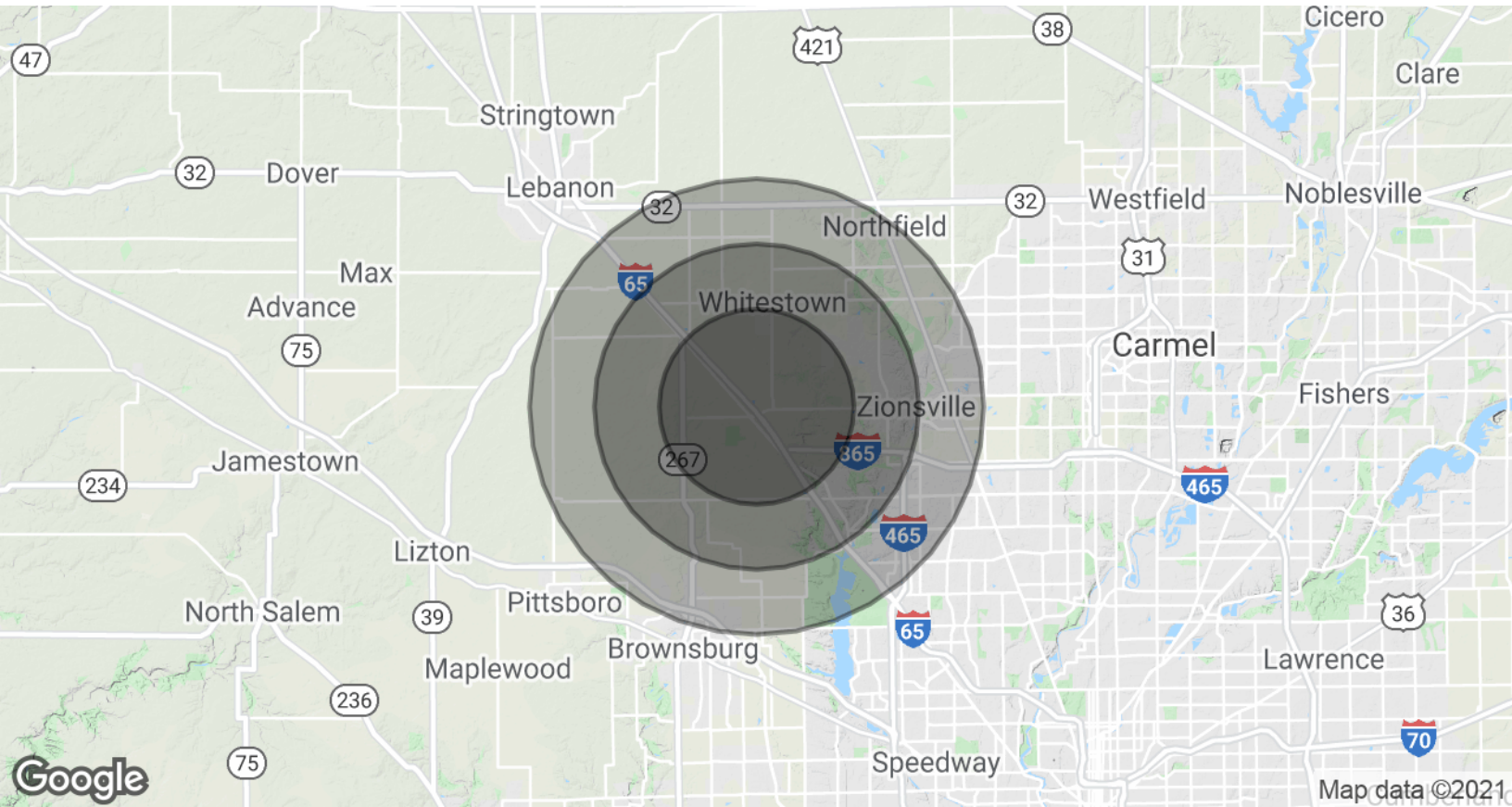
**4 THE MARKETPLACE AT ANSON**

# ANSON COMMERCIAL/ RETAIL SITES

I-65 & Whitestown Parkway Whitestown, IN 46075



MIDLAND ATLANTIC  
PROPERTIES



## POPULATION & HOUSING

	3 MILES	5 MILES	7 MILES
Total Population	16,202	38,020	72,916
Projected Annual Growth (2020-2025)	1.1%	1.3%	1.5%
Total Households	5,896	13,923	26,284
Median Home Value	\$272,287	\$319,843	\$316,679

## INCOME & BUSINESS

	3 MILES	5 MILES	7 MILES
Average HH income	\$130,144	\$147,621	\$155,113
Daytime Population (16+ years)	7,608	19,285	75,369
Total Businesses	467	1,453	4,381
Total Employees	4,491	10,526	57,819

### MIDLAND ATLANTIC PROPERTIES

Indianapolis Office  
3801 East 82nd Street, Suite B  
Indianapolis, IN 46240

### PATRICK BOYLE

Direct: 317.597.1718  
Cell: 317.679.6322  
pjboyle@midlandatlantic.us

### SHAWN HEFFERN

Direct: 317.597.1715  
Cell: 317.695.8938  
sheffern@midlandatlantic.us

MIDLANDATLANTIC.COM

DEVELOPMENT • BROKERAGE • ACQUISITIONS • MANAGEMENT

Information contained herein has been obtained from sources deemed reliable but is not guaranteed and is subject to change without notice.