

Overview

Aerial

Site Aerial

Site Plan

Development

Photos

Demos

## For Lease

### Property Description

Fremaux Town Center is seated in Slidell, LA at the second I-10 exit northeast of New Orleans. The center is a premier shopping destination as it sees 67,000 vehicles per day on I-10, in its' trade area with a population of 239,254. This daily 37% of the total trade area population promises an outstanding retail opportunity for a wide variety of retailers.

### Available

- 1,264 SF - 30,000 SF

### Price

- \$18 - \$27 PSF

### Total Land Size

- 80 Acres

### Retail Anchors

- Dillard's
- Best Buy
- DICK'S Sporting Goods
- T.J. MAXX
- KOHL'S
- PetSmart
- Ulta
- Michaels



**Ryan Pécot**

Office: 337-234-4481  
Direct: 337-572-0246  
rpecot@stirlingprop.com

Overview

**Aerial**

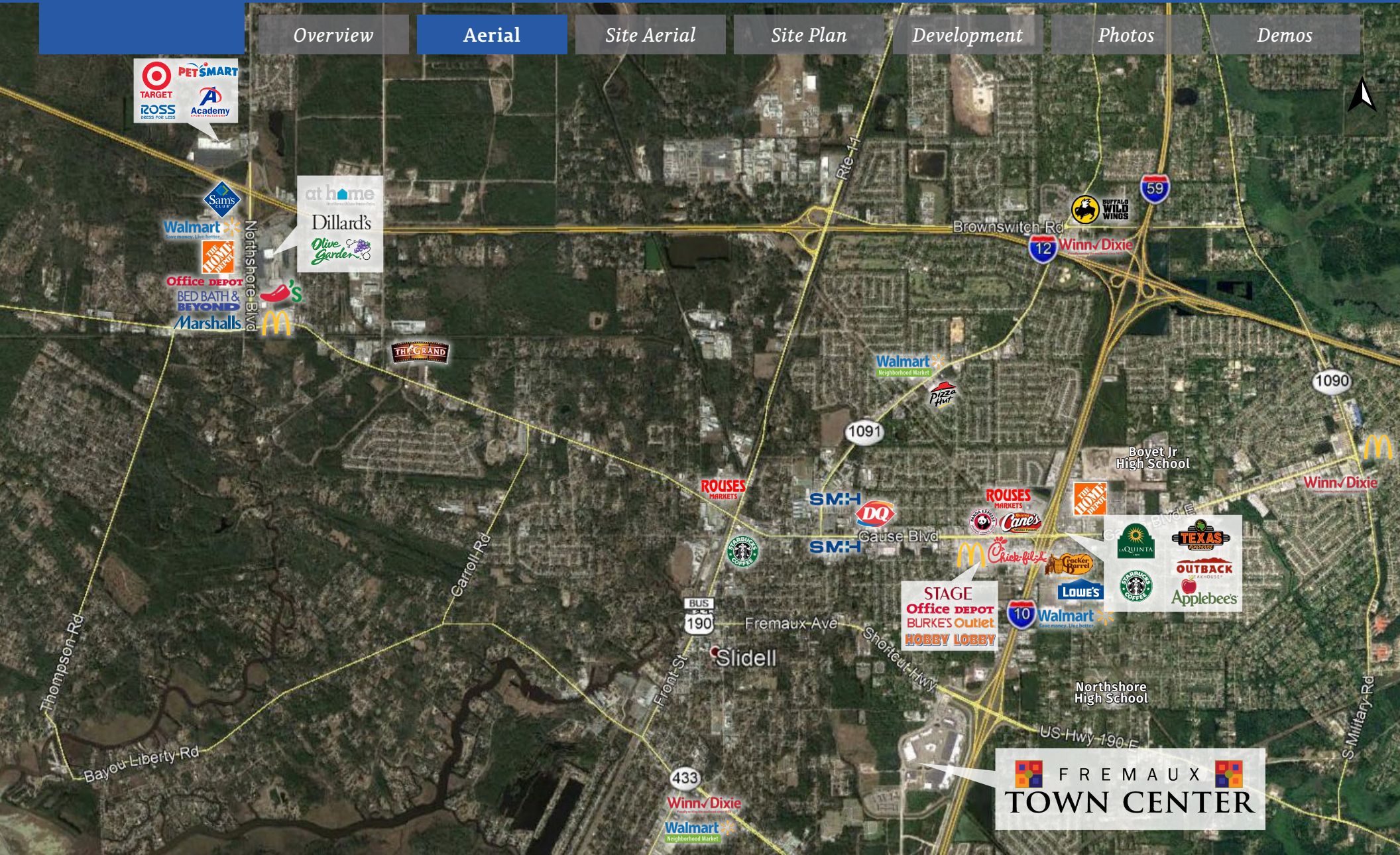
Site Aerial

Site Plan

Development

Photos

Demos



Overview

Aerial

Site Aerial

Site Plan

Development

Photos

Demos



Overview

Aerial

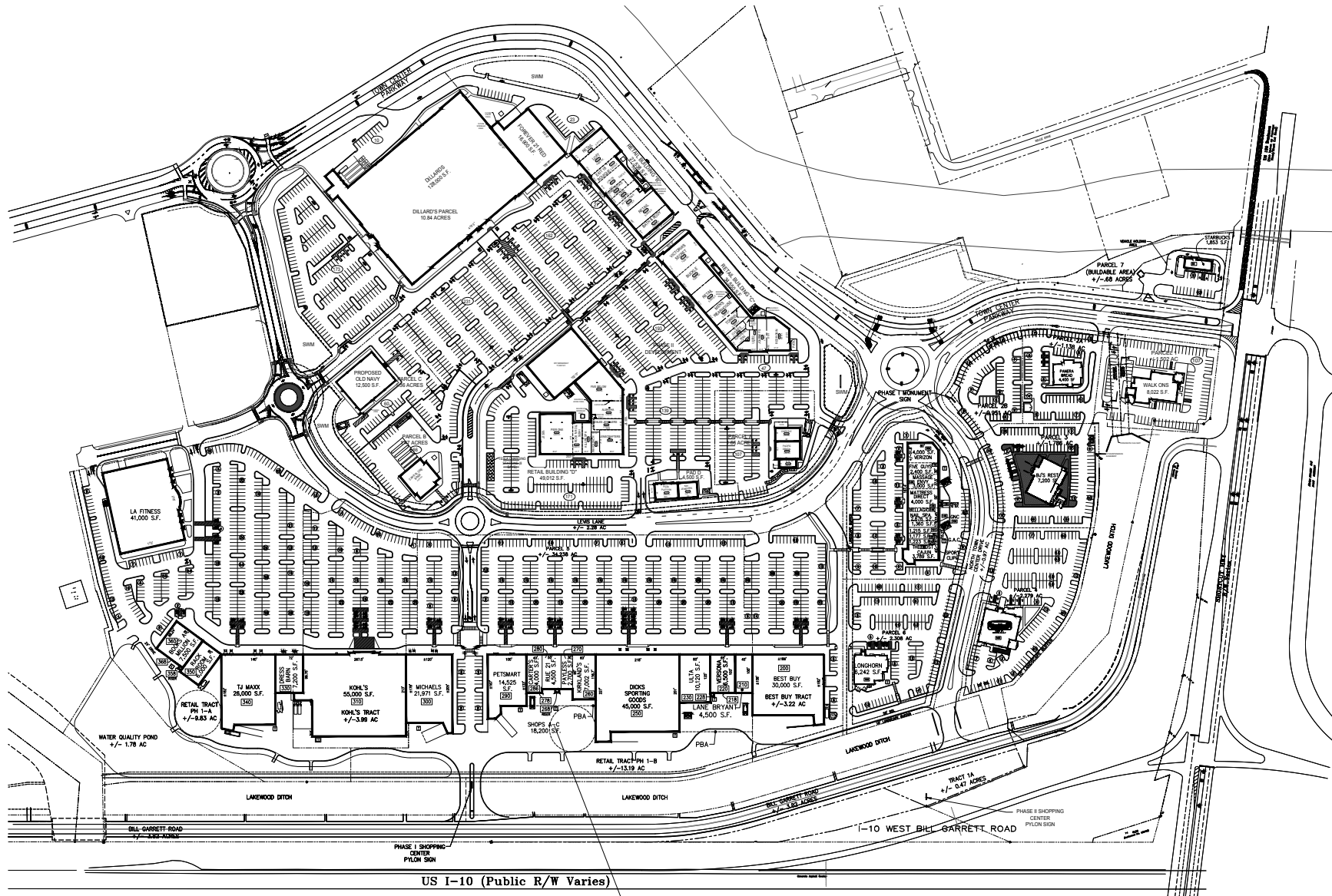
Site Aerial

**Site Plan**

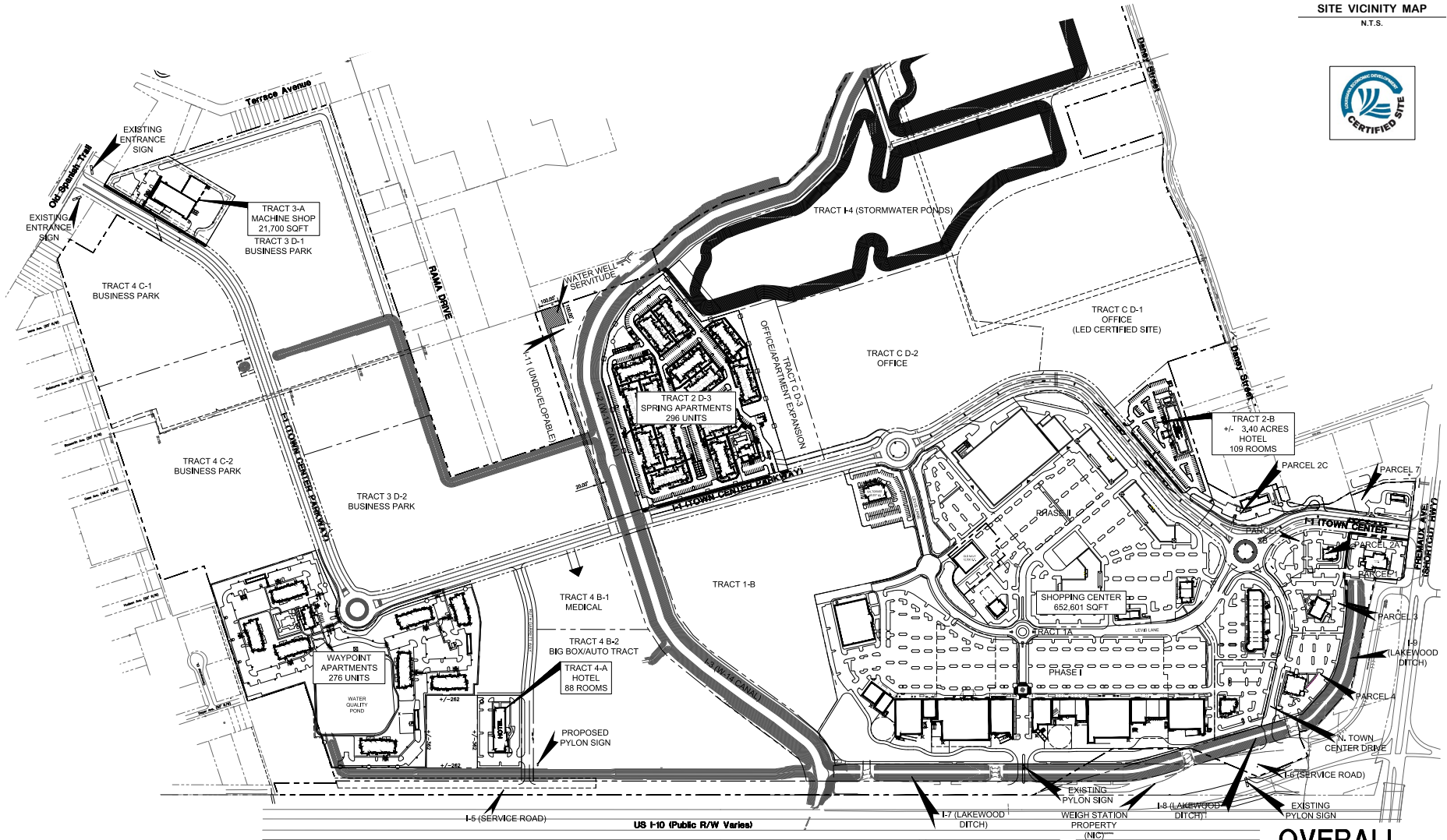
Development

Photos

Demos



SITE VICINITY MAP  
 N.T.S.



**OVERALL**

Click image for larger view

Overview

Aerial

Site Aerial

Site Plan

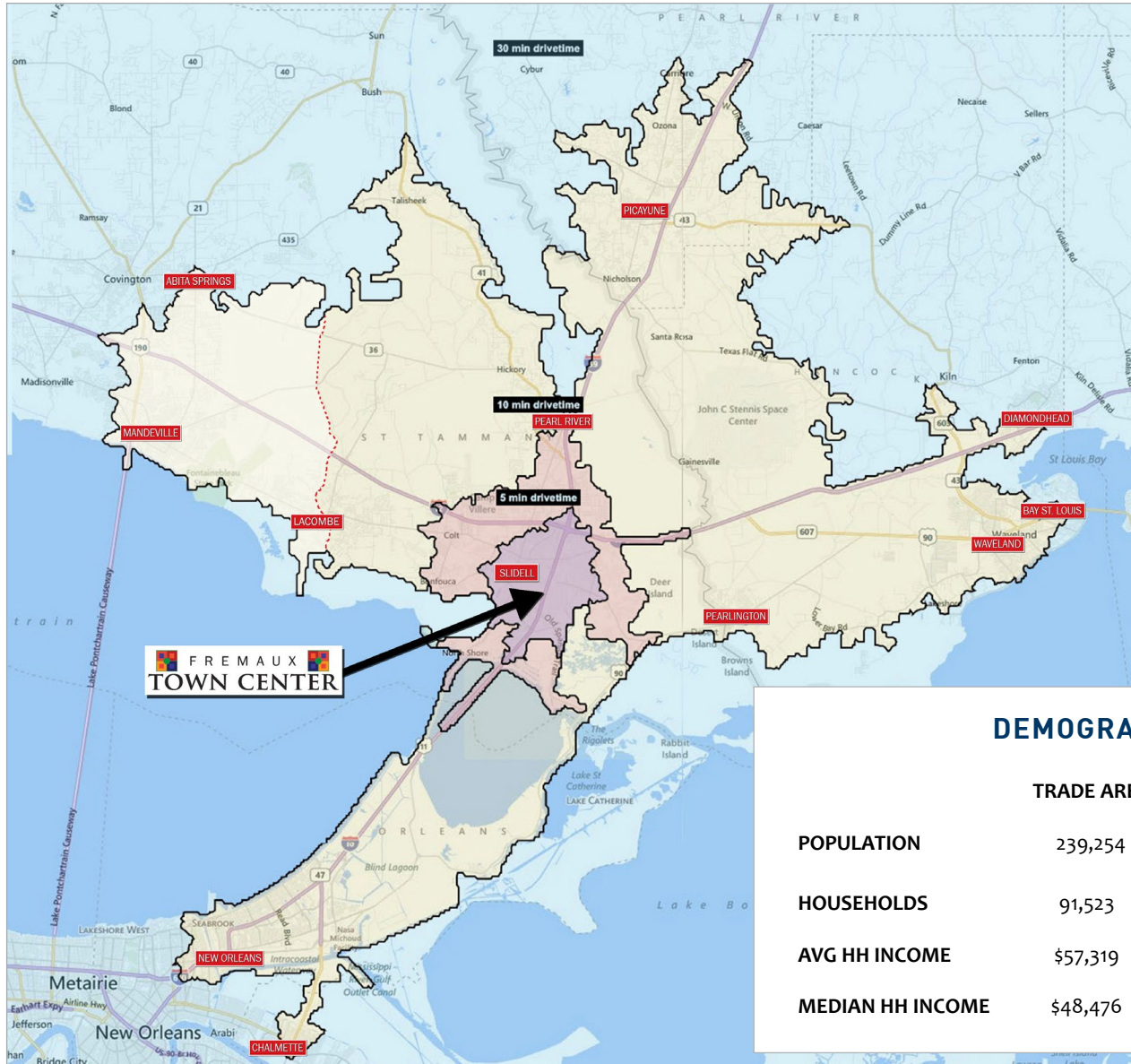
Development

Photos

Demos



- Overview
- Aerial
- Site Aerial
- Site Plan
- Development
- Photos
- Demos**



Because the 30 minute drive time encompasses a secondary trade area, the yellow shaded area represents the primary trade area while the black bordered area represents the 30 minute drive time.

**DEMOGRAPHICS - 2018 ESTIMATES**

	TRADE AREA	5 MIN	10 MIN	30 MIN
<b>POPULATION</b>	239,254	52,032	92,157	294,574
<b>HOUSEHOLDS</b>	91,523	20,660	34,665	111,208
<b>AVG HH INCOME</b>	\$57,319	\$72,241	\$75,085	\$69,658
<b>MEDIAN HH INCOME</b>	\$48,476	\$59,472	\$60,340	\$54,017