

For Sale

Office & Industrial Space
Price Reduced: \$510,000



Ollerich Building

2301 & 2229 E. Rice Street, Sioux Falls, SD 57104

Property Features

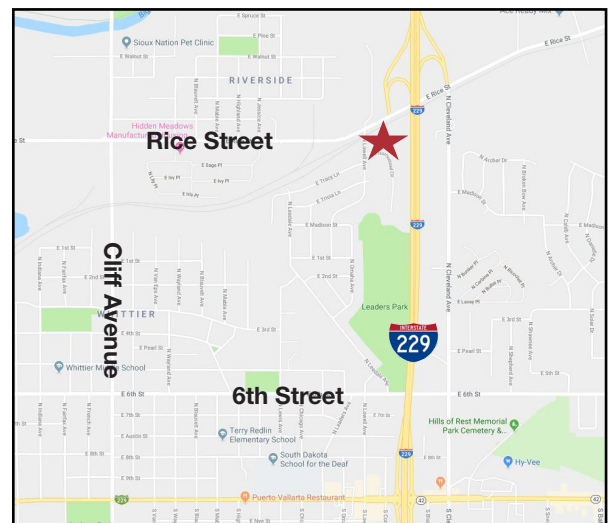
- Total building size: 7,296 sq. ft.
- Main building: 4,776 sq. ft.
 - Office 2,376 sq. ft.
 - Shop 2,400 sq. ft.
 - Year built: 1974
- Cold storage building: 2,520 sq. ft.
- Lot size: 1.57 acres (68,389 sq. ft.)

Pricing

- Price Reduced: \$510,000
- 2017 Real Estate Taxes: \$8,617.32

Location

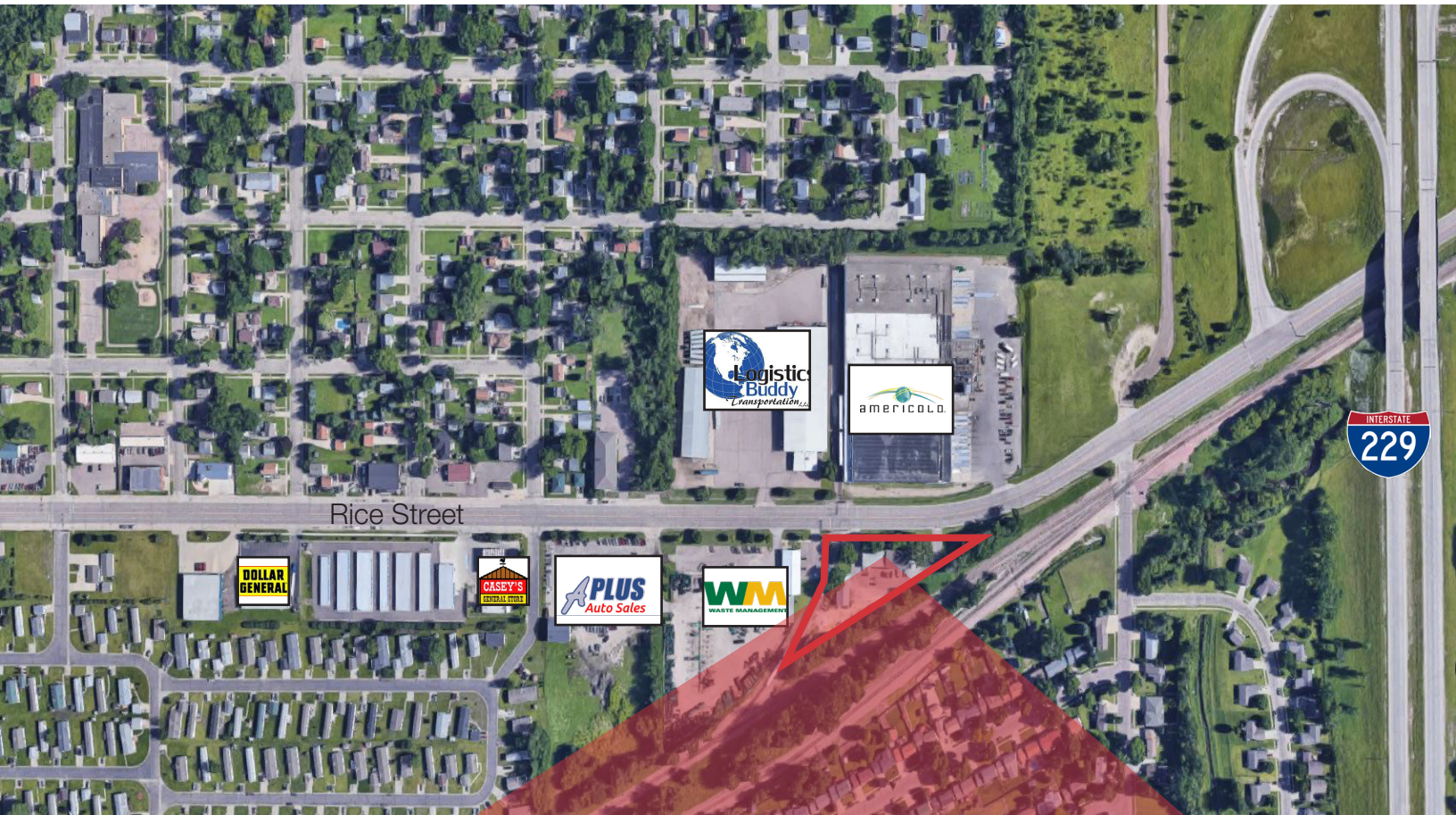
- Located just west of I-229 on Rice Street
- Area neighbors include: Waste Management, Americold Logistics, Logistics Buddy Transportation, Dollar General, A Plus Auto Sales, Casey's General Store, Sioux Merchant Patrol, Inc.



Bill Connolly

+1 605 444 7130 Office
+1 605 254 2360 Cell
bconnelly@naisiouxfalls.com

For Sale
Office & Industrial Space



For Sale
Office & Industrial Space

