

LAND FOR SALE



**0 Palmer Rd
Westland, Michigan**

**Insite
COMMERCIAL**

1111 W. Oakley Park Road
Suite 220
Commerce, Michigan 48390
(248) 359-9000 – Detroit Office
(616) 241-2200 – Grand Rapids Office
www.insitecommercial.com

TABLE OF CONTENTS

LAND FOR SALE

**0 Palmer Rd
Westland, Michigan**

SUMMARY	page 1
AERIAL	page 2
AREA MAPS	page 3
DEMOGRAPHICS	pages 4-6
TRAFFIC COUNTS	page 7



PROPERTY SUMMARY

Location: 0 Palmer Rd
Westland, MI 48186

Parcel ID: 067-99-0016-703

Total Land Size: 1.245 Acres

Sale Price: \$249,900

Utilities: All utilities at the road

Zoning: OB – Office Business

Demographics within

a 5 mile radius:	Population:	246,453 Persons
	Households:	99,869 Homes
	Avg. HH Income:	\$71,690 USD
	Traffic Count:	8,344 VPD

Comments: 1.245 Acres near the Northwest corner of Palmer and Venoy Rd. With 274 feet of frontage, all utilities available at the road, and adjacent to a medical office, this parcel allows for a great development opportunity.

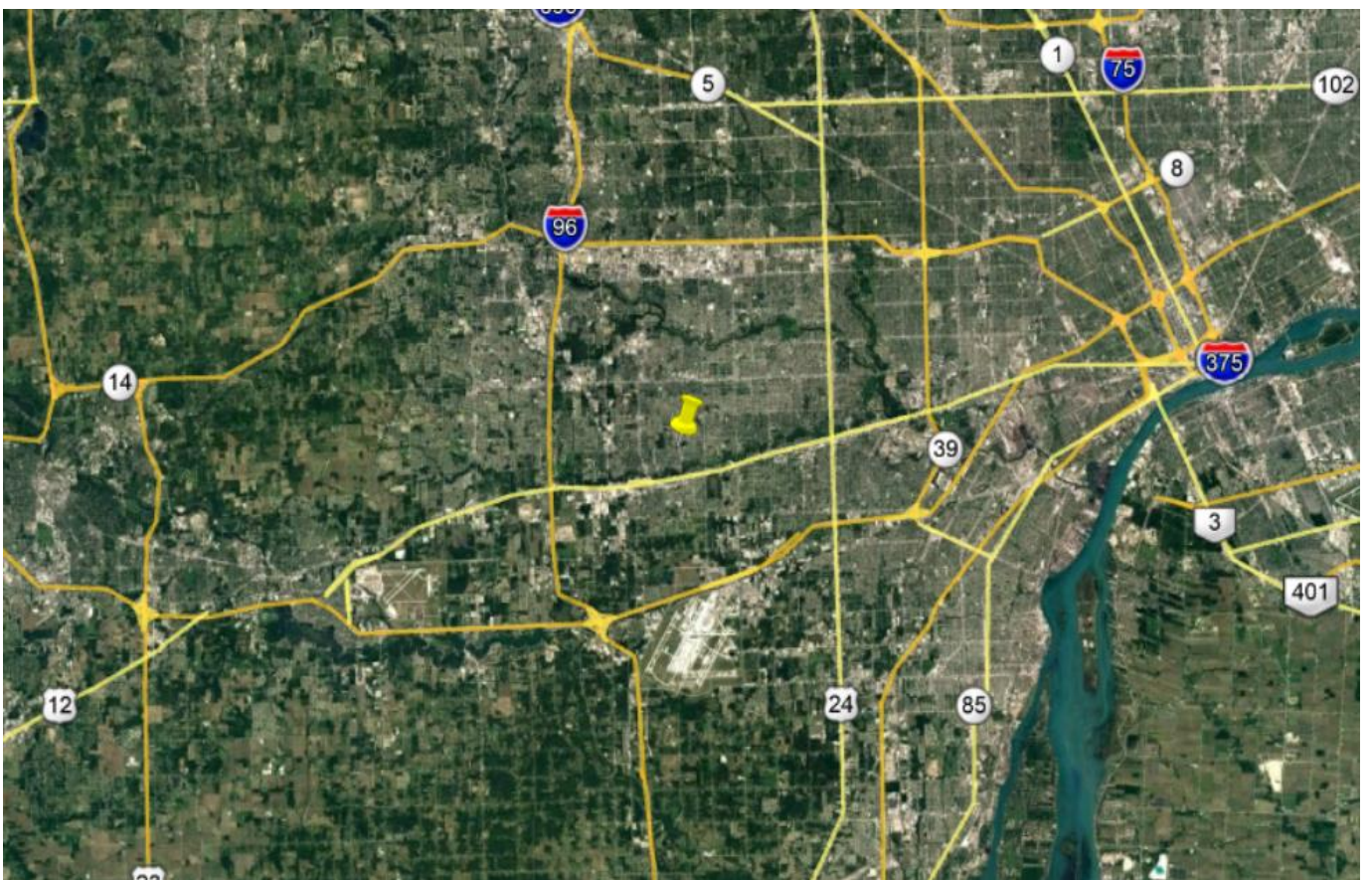
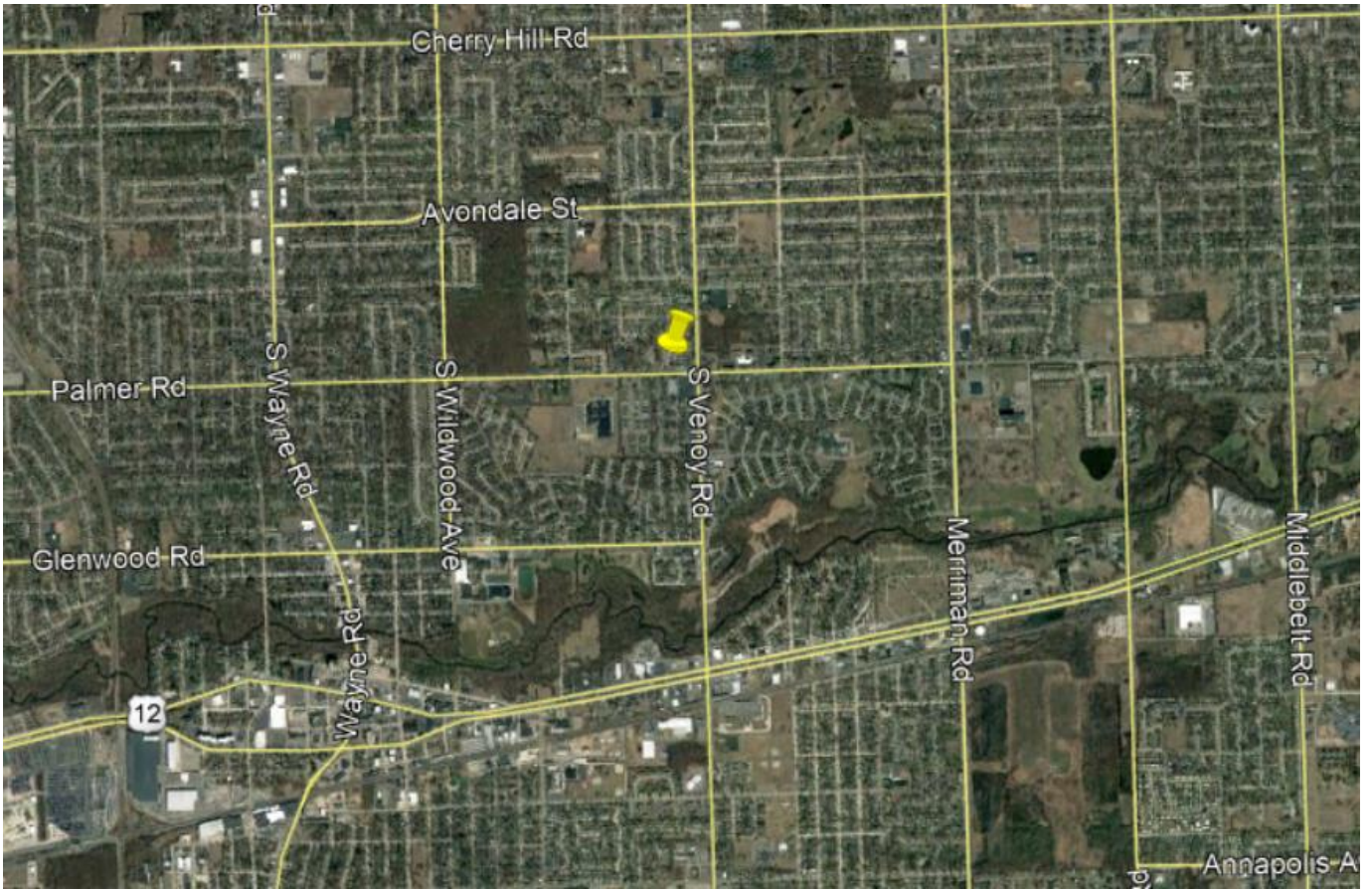
For Information Contact:

Mo Abubars

248-359-9000







DEMOGRAPHICS

FULL PROFILE

2000-2010 Census, 2021 Estimates with 2026 Projections

Calculated using Weighted Block Centroid from Block Groups



Mo Abubars

Lat/Lon: 42.2963/-83.3649

RF1

33000 Palmer Rd

Westland, MI 48186

1 mi radius 3 mi radius 5 mi radius

	1 mi radius	3 mi radius	5 mi radius	
POPULATION	2021 Estimated Population	15,626	101,350	246,453
	2026 Projected Population	15,541	100,709	245,644
	2010 Census Population	15,876	104,922	254,343
	2000 Census Population	17,323	111,581	263,740
	Projected Annual Growth 2021 to 2026	-0.1%	-0.1%	-
	Historical Annual Growth 2000 to 2021	-0.5%	-0.4%	-0.3%
HOUSEHOLDS	2021 Estimated Households	6,217	40,657	99,869
	2026 Projected Households	6,221	40,546	99,884
	2010 Census Households	6,257	41,852	102,438
	2000 Census Households	6,622	43,202	104,940
	Projected Annual Growth 2021 to 2026	-	-	-
	Historical Annual Growth 2000 to 2021	-0.3%	-0.3%	-0.2%
AGE	2021 Est. Population Under 10 Years	14.0%	12.9%	12.7%
	2021 Est. Population 10 to 19 Years	12.3%	12.2%	12.2%
	2021 Est. Population 20 to 29 Years	14.3%	13.8%	14.1%
	2021 Est. Population 30 to 44 Years	21.1%	19.9%	19.9%
	2021 Est. Population 45 to 59 Years	17.9%	18.8%	18.7%
	2021 Est. Population 60 to 74 Years	14.7%	16.3%	15.9%
	2021 Est. Population 75 Years or Over	5.6%	6.1%	6.6%
	2021 Est. Median Age	35.2	37.1	37.1
MARITAL STATUS & GENDER	2021 Est. Male Population	49.1%	48.4%	48.3%
	2021 Est. Female Population	50.9%	51.6%	51.7%
	2021 Est. Never Married	36.7%	38.2%	36.3%
	2021 Est. Now Married	32.7%	36.1%	39.6%
	2021 Est. Separated or Divorced	22.8%	18.7%	17.3%
	2021 Est. Widowed	7.9%	7.0%	6.8%
INCOME	2021 Est. HH Income \$200,000 or More	1.3%	1.7%	3.2%
	2021 Est. HH Income \$150,000 to \$199,999	2.3%	3.3%	4.2%
	2021 Est. HH Income \$100,000 to \$149,999	11.4%	12.0%	13.7%
	2021 Est. HH Income \$75,000 to \$99,999	13.8%	14.4%	14.1%
	2021 Est. HH Income \$50,000 to \$74,999	21.4%	20.7%	21.7%
	2021 Est. HH Income \$35,000 to \$49,999	18.2%	14.7%	13.9%
	2021 Est. HH Income \$25,000 to \$34,999	10.6%	11.1%	10.3%
	2021 Est. HH Income \$15,000 to \$24,999	9.5%	9.0%	8.1%
	2021 Est. HH Income Under \$15,000	11.5%	13.1%	10.9%
	2021 Est. Average Household Income	\$62,088	\$65,745	\$71,690
	2021 Est. Median Household Income	\$53,177	\$53,242	\$58,953
	2021 Est. Per Capita Income	\$24,830	\$26,453	\$29,134
	2021 Est. Total Businesses	242	2,656	7,152
2021 Est. Total Employees	2,469	24,649	77,469	

This report was produced using data from private and government sources deemed to be reliable. The information herein is provided without representation or warranty.

OFFICE | INDUSTRIAL | RETAIL | LAND | INVESTMENT | TENANT REPRESENTATION | CORPORATE SERVICES | PROPERTY MANAGEMENT | AVIATION SERVICES

DEMOGRAPHICS

FULL PROFILE

2000-2010 Census, 2021 Estimates with 2026 Projections

Calculated using Weighted Block Centroid from Block Groups



Mo Abubars

Lat/Lon: 42.2963/-83.3649

RF1

33000 Palmer Rd

Westland, MI 48186

1 mi radius 3 mi radius 5 mi radius

	1 mi radius	3 mi radius	5 mi radius	
RACE	2021 Est. White	72.5%	66.0%	68.2%
	2021 Est. Black	19.5%	26.2%	22.6%
	2021 Est. Asian or Pacific Islander	2.5%	2.6%	4.5%
	2021 Est. American Indian or Alaska Native	0.6%	0.5%	0.4%
	2021 Est. Other Races	5.0%	4.7%	4.2%
HISPANIC	2021 Est. Hispanic Population	879	4,811	11,744
	2021 Est. Hispanic Population	5.6%	4.7%	4.8%
	2026 Proj. Hispanic Population	6.0%	5.1%	5.1%
	2010 Hispanic Population	4.4%	3.5%	3.5%
EDUCATION (Adults 25 or Older)	2021 Est. Adult Population (25 Years or Over)	10,518	69,683	169,883
	2021 Est. Elementary (Grade Level 0 to 8)	3.0%	2.9%	2.9%
	2021 Est. Some High School (Grade Level 9 to 11)	9.1%	8.8%	7.5%
	2021 Est. High School Graduate	38.3%	36.5%	32.2%
	2021 Est. Some College	27.5%	26.2%	24.4%
	2021 Est. Associate Degree Only	7.1%	8.7%	9.3%
	2021 Est. Bachelor Degree Only	9.7%	11.4%	15.2%
	2021 Est. Graduate Degree	5.3%	5.5%	8.5%
HOUSING	2021 Est. Total Housing Units	7,179	46,001	112,114
	2021 Est. Owner-Occupied	48.4%	58.0%	59.9%
	2021 Est. Renter-Occupied	38.3%	30.4%	29.2%
	2021 Est. Vacant Housing	13.4%	11.6%	10.9%
HOMES BUILT BY YEAR	2021 Homes Built 2010 or later	0.8%	1.2%	1.5%
	2021 Homes Built 2000 to 2009	2.5%	4.2%	4.6%
	2021 Homes Built 1990 to 1999	4.1%	6.2%	7.7%
	2021 Homes Built 1980 to 1989	4.4%	5.1%	5.7%
	2021 Homes Built 1970 to 1979	9.4%	12.9%	13.6%
	2021 Homes Built 1960 to 1969	15.7%	15.7%	14.9%
	2021 Homes Built 1950 to 1959	29.2%	28.2%	28.2%
	2021 Homes Built Before 1949	20.5%	14.9%	12.8%
HOME VALUES	2021 Home Value \$1,000,000 or More	0.8%	0.4%	0.3%
	2021 Home Value \$500,000 to \$999,999	1.4%	1.4%	1.6%
	2021 Home Value \$400,000 to \$499,999	1.1%	0.9%	1.3%
	2021 Home Value \$300,000 to \$399,999	2.1%	2.3%	4.2%
	2021 Home Value \$200,000 to \$299,999	6.4%	8.9%	14.8%
	2021 Home Value \$150,000 to \$199,999	11.5%	16.1%	21.0%
	2021 Home Value \$100,000 to \$149,999	35.5%	30.4%	25.3%
	2021 Home Value \$50,000 to \$99,999	29.0%	27.7%	20.3%
	2021 Home Value \$25,000 to \$49,999	7.2%	6.5%	5.9%
	2021 Home Value Under \$25,000	5.0%	5.3%	5.2%
	2021 Median Home Value	\$105,211	\$113,108	\$136,455
	2021 Median Rent	\$729	\$729	\$775

This report was produced using data from private and government sources deemed to be reliable. The information herein is provided without representation or warranty.

FULL PROFILE

2000-2010 Census, 2021 Estimates with 2026 Projections

Calculated using Weighted Block Centroid from Block Groups

Mo Abubars

Lat/Lon: 42.2963/-83.3649



RF1

33000 Palmer Rd

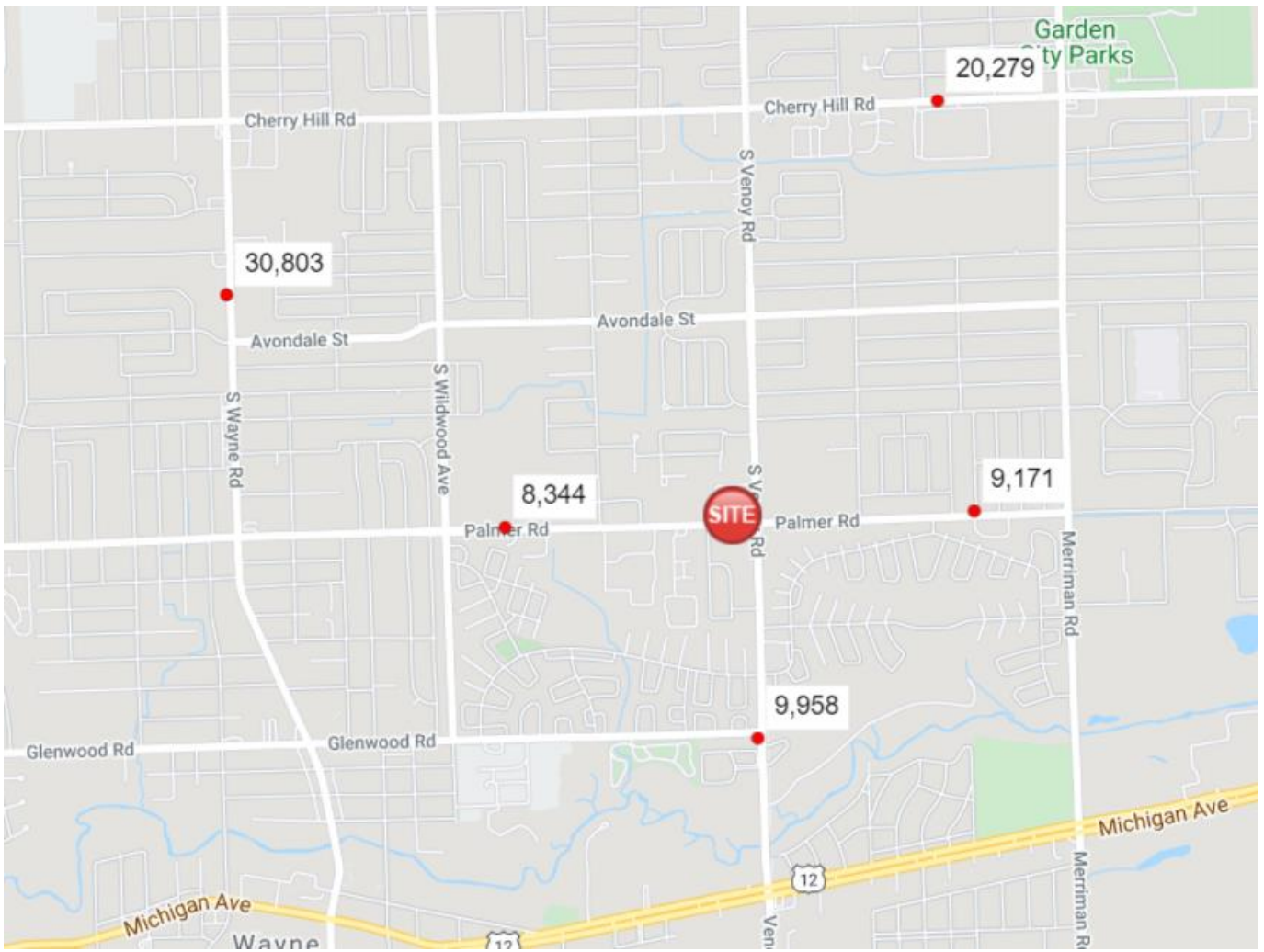
Westland, MI 48186

1 mi radius 3 mi radius 5 mi radius

	1 mi radius	3 mi radius	5 mi radius	
LABOR FORCE	2021 Est. Labor Population Age 16 Years or Over	12,227	80,711	196,715
	2021 Est. Civilian Employed	57.5%	55.9%	56.8%
	2021 Est. Civilian Unemployed	3.9%	3.9%	3.8%
	2021 Est. in Armed Forces	-	-	-
	2021 Est. not in Labor Force	38.6%	40.2%	39.3%
	2021 Labor Force Males	48.2%	47.4%	47.4%
	2021 Labor Force Females	51.8%	52.6%	52.6%
OCCUPATION	2021 Occupation: Population Age 16 Years or Over	7,029	45,142	111,710
	2021 Mgmt, Business, & Financial Operations	12.1%	11.1%	12.6%
	2021 Professional, Related	15.0%	16.7%	20.3%
	2021 Service	20.3%	19.7%	18.4%
	2021 Sales, Office	20.9%	21.3%	20.4%
	2021 Farming, Fishing, Forestry	-	0.3%	0.3%
	2021 Construction, Extraction, Maintenance	7.1%	7.4%	6.7%
	2021 Production, Transport, Material Moving	24.6%	23.5%	21.3%
	2021 White Collar Workers	48.0%	49.2%	53.3%
2021 Blue Collar Workers	52.0%	50.8%	46.7%	
TRANSPORTATION TO WORK	2021 Drive to Work Alone	79.2%	80.1%	80.5%
	2021 Drive to Work in Carpool	10.5%	10.0%	9.7%
	2021 Travel to Work by Public Transportation	3.5%	3.2%	3.1%
	2021 Drive to Work on Motorcycle	-	-	-
	2021 Walk or Bicycle to Work	2.1%	1.8%	1.9%
	2021 Other Means	1.7%	1.6%	1.5%
	2021 Work at Home	3.0%	3.3%	3.2%
TRAVEL TIME	2021 Travel to Work in 14 Minutes or Less	23.0%	22.7%	22.4%
	2021 Travel to Work in 15 to 29 Minutes	40.9%	44.2%	46.3%
	2021 Travel to Work in 30 to 59 Minutes	37.5%	34.3%	35.0%
	2021 Travel to Work in 60 Minutes or More	6.5%	6.2%	5.4%
	2021 Average Travel Time to Work	24.2	23.4	23.3
CONSUMER EXPENDITURE	2021 Est. Total Household Expenditure	\$313.03 M	\$2.13 B	\$5.56 B
	2021 Est. Apparel	\$10.88 M	\$74 M	\$193.71 M
	2021 Est. Contributions, Gifts	\$16.75 M	\$115.03 M	\$305.74 M
	2021 Est. Education, Reading	\$9.03 M	\$62.37 M	\$166.67 M
	2021 Est. Entertainment	\$17.22 M	\$117.99 M	\$309.93 M
	2021 Est. Food, Beverages, Tobacco	\$49.02 M	\$332.28 M	\$862.16 M
	2021 Est. Furnishings, Equipment	\$10.74 M	\$73.51 M	\$193.04 M
	2021 Est. Health Care, Insurance	\$29.3 M	\$199.57 M	\$517.78 M
	2021 Est. Household Operations, Shelter, Utilities	\$102.77 M	\$696.44 M	\$1.81 B
	2021 Est. Miscellaneous Expenses	\$5.9 M	\$40.13 M	\$104.97 M
	2021 Est. Personal Care	\$4.2 M	\$28.6 M	\$74.61 M
2021 Est. Transportation	\$57.22 M	\$389.84 M	\$1.02 B	

This report was produced using data from private and government sources deemed to be reliable. The information herein is provided without representation or warranty.

OFFICE | INDUSTRIAL | RETAIL | LAND | INVESTMENT | TENANT REPRESENTATION | CORPORATE SERVICES | PROPERTY MANAGEMENT | AVIATION SERVICES



OFFICE | INDUSTRIAL | RETAIL | LAND | INVESTMENT | TENANT REPRESENTATION | CORPORATE SERVICES | PROPERTY MANAGEMENT | AVIATION SERVICES

