

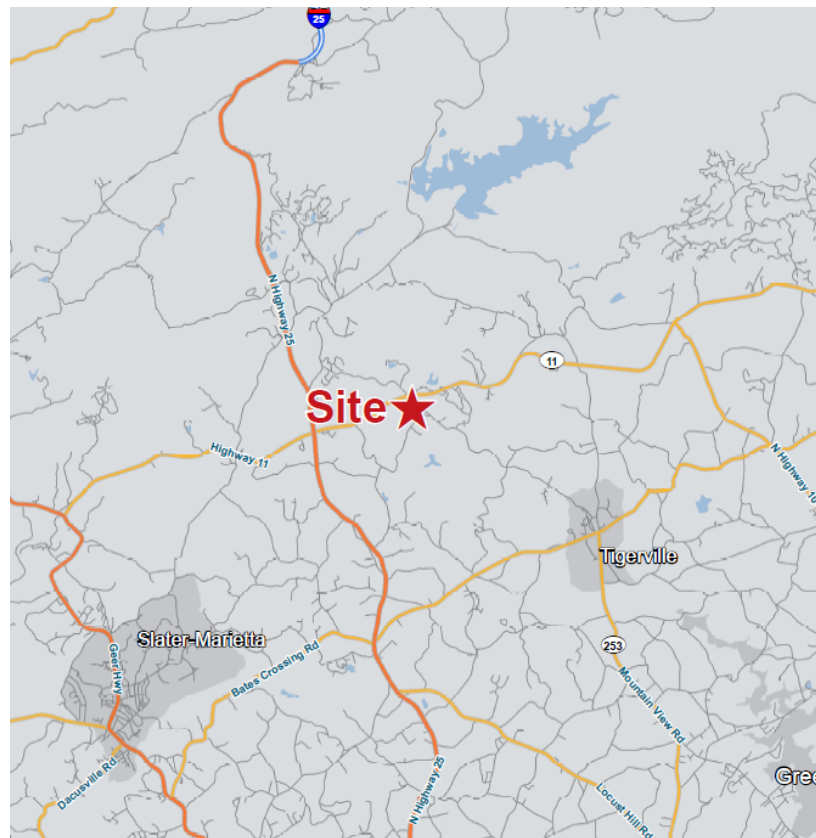
72.6± Acres

71 Airline Road Travelers Rest, SC 29690



Chinquapin Road Mountain Tract

- Approx 72.6± acres of timberland in Greenville County
- List Price : \$580,895
- Tax Map #'s 0662100101000
- Property Name : Chinquapin Road Mountain Estate
- Location: Travelers Rest, SC
- Access: State HWY 11 & Multiple Paved Roads
- Approximately Four Thousand Feet (4,000 FT) of Paved Road Frontage
- 2,480 +/- feet of mountain streams
- Frontage on SC Scenic HWY 11
- Views Include: Long Rang Mountain Views as well as Creeks & Streams



✉ William "Tripp" Taylor, III
+1 336 260 5523
ttaylor@naiearlefurman.com

✉ Timothy "Dallas" Wright
+1 843 505 2644
dwright@naiearlefurman.com

No Warranty Or Representation, Express Or Implied, Is Made As To The Accuracy Of The Information Contained Herein, And The Same Is Submitted Subject To Errors, Omissions, Change Of Price, Rental Or Other Conditions, Prior Sale, Lease Or Financing Or Withdrawal Without Notice, And Of Any Special Listing Conditions Imposed By Our Principals No Warranties Or Representations Are Made As To The Condition Of The Property Or Any Hazards Contained Therein Are Any To Be Implied.

📍 101 E Washington St
Greenville, SC 29601
naief.com

Property Description

71 Airline Road Travelers Rest, SC 29690



PROPERTY DESCRIPTION

Settled at the base of the Appalachian Mountains this 72 Acre property is prime for those who love the cooler temperatures, fall colors, & access to the outdoors. With multiple golf venues within minutes, this property could be a family mountain legacy property or future custom home development. With the hill top high point at 1,300 the property has diverse landscape with mountain streams intertwined between the natural growth timber. The Chinquapin Road - Mountain Tract offers solitude and convenience with approximately four thousand feet (4,000 FT) of paved road frontage, including direct access off of Scenic SC HWY 11. Just 2.35 Mi to The Cliffs Mountain Park golf club, 15 minutes to Travelers Rest, & 37 Minutes to booming Downtown Greenville.

LOCATION DESCRIPTION

Access:

State HWY 11

Multiple Paved Roads

Views:

Long Rang Mountain Views

Creeks & Streams

✉ William "Tripp" Taylor, III
+1 336 260 5523
ttaylor@naiearlefurman.com

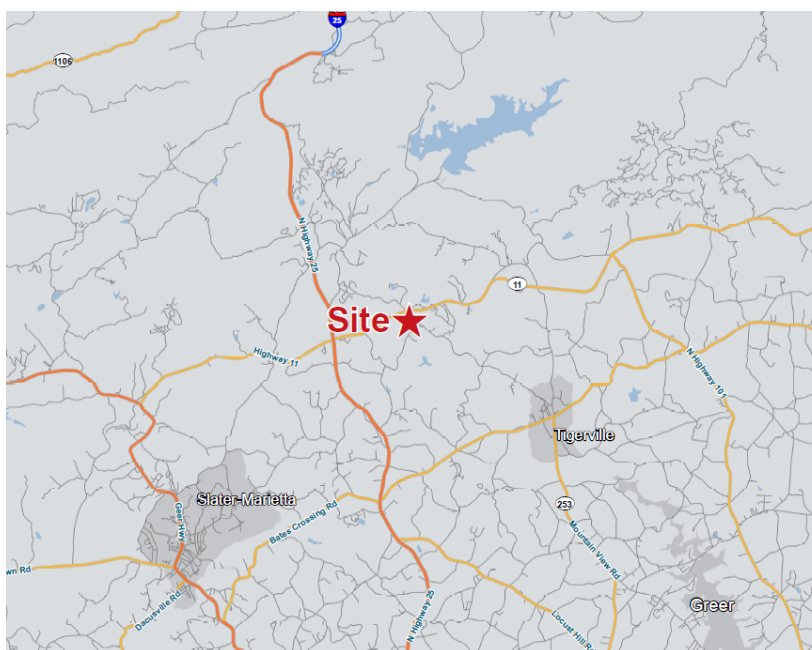
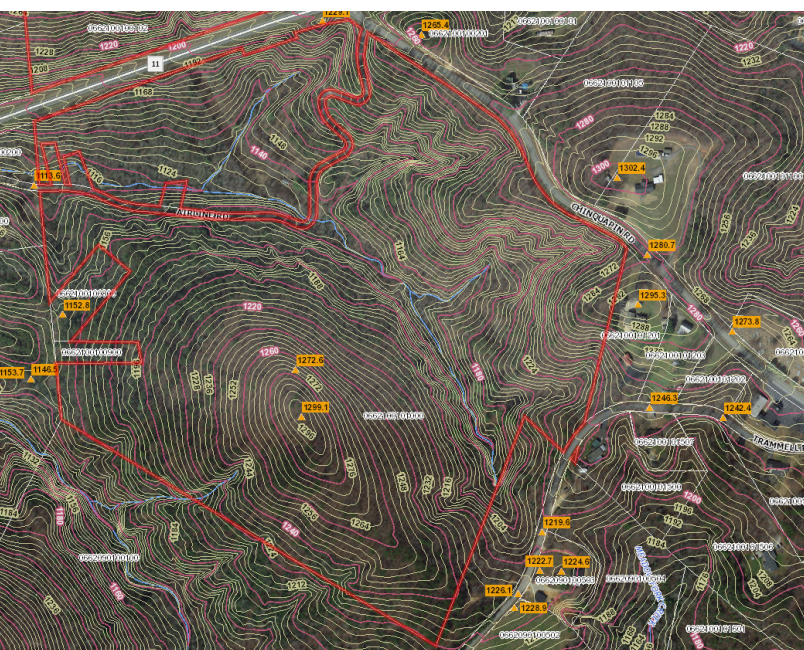
✉ Timothy "Dallas" Wright
+1 843 505 2644
dwright@naiearlefurman.com

No Warranty Or Representation, Express Or Implied, Is Made As To The Accuracy Of The Information Contained Herein, And The Same Is Submitted Subject To Errors, Omissions, Change Of Price, Rental Or Other Conditions, Prior Sale, Lease Or Financing Or Withdrawal, Without Notice, And Of Any Special Listing Conditions Imposed By Our Principals No Warranties Or Representations Are Made As To The Condition Of The Property Or Any Hazards Contained Therein Are Any To Be Implied.



Additional Photos

71 Airline Road Travelers Rest, SC 29690



✉ William "Tripp" Taylor, III
+1 336 260 5523
ttaylor@naiearlefurman.com

✉ Timothy "Dallas" Wright
+1 843 505 2644
dwright@naiearlefurman.com

No Warranty Or Representation, Express Or Implied, Is Made As To The Accuracy Of The Information Contained Herein, And The Same Is Submitted Subject To Errors, Omissions, Change Of Price, Rental Or Other Conditions, Prior Sale, Lease Or Financing Or Withdrawal Without Notice, And Of Any Special Listing Conditions Imposed By Our Principals No Warranties Or Representations Are Made As To The Condition Of The Property Or Any Hazards Contained Therein Are Any To Be Implied.

