

FOR LEASE

Anne Arundel County, MD

THE PARKWAY BUILDING

200 HARRY S. TRUMAN PARKWAY | ANNAPOLIS, MARYLAND 21401

AVAILABLE

2nd floor: 3,745 sf

4th floor: 762 sf - 4,951 sf

RENTAL RATE

Withheld

PARKING RATIO

4 per 1,000 sf

OCCUPANCY

Immediate

HIGHLIGHTS

- ▶ High visibility along Riva Road and Harry S. Truman Parkway
- ▶ Close proximity to Anne Arundel County office buildings and Board of Education
- ▶ Immediate access to Rt. 50, I-97 and Aris T. Allen Boulevard
- ▶ Large conference and meeting room facilities available for tenants use
- ▶ Free on-site deck and surface parking



Trish Farrell | Senior Vice President & Principal

☎ 410.974.9003 ✉ tfarrell@mackenziecommercial.com

Mackenzie Commercial Real Estate Services, LLC • 410-974-9336 • 410 Severn Avenue | Annapolis, Maryland 21403 • www.MACKENZIECOMMERCIAL.com

E. Hayes Merkert, SIOR | Senior Vice President

☎ 443.798.9344 ✉ hmerkert@mackenziecommercial.com

FOR LEASE

Anne Arundel County, MD

NEWLY RENOVATED LOBBY AND COMMON AREA

200 HARRY S. TRUMAN PARKWAY | ANNAPOLIS, MARYLAND 21401



 **MACKENZIE**
COMMERCIAL REAL ESTATE SERVICES, LLC

Trish Farrell | Senior Vice President & Principal
☎ 410.974.9003 ✉ tfarrell@mackenziecommercial.com

Mackenzie Commercial Real Estate Services, LLC • 410-974-9336 • 410 Severn Avenue | Annapolis, Maryland 21403 • www.MACKENZIECOMMERCIAL.com

E. Hayes Merkert, SIOR | Senior Vice President
☎ 443.798.9344 ✉ hmerkert@mackenziecommercial.com

FOR LEASE

Anne Arundel County, MD

SHARED CONFERENCE ROOM FACILITIES

200 HARRY S. TRUMAN PARKWAY | ANNAPOLIS, MARYLAND 21401



Trish Farrell | Senior Vice President & Principal
☎ 410.974.9003 ✉ tfarrell@mackenziecommercial.com

MacKenzie Commercial Real Estate Services, LLC • 410-974-9336 • 410 Severn Avenue | Annapolis, Maryland 21403 • www.MACKENZIECOMMERCIAL.com

E. Hayes Merkert, SIOR | Senior Vice President
☎ 443.798.9344 ✉ hmerkert@mackenziecommercial.com

FOR LEASE

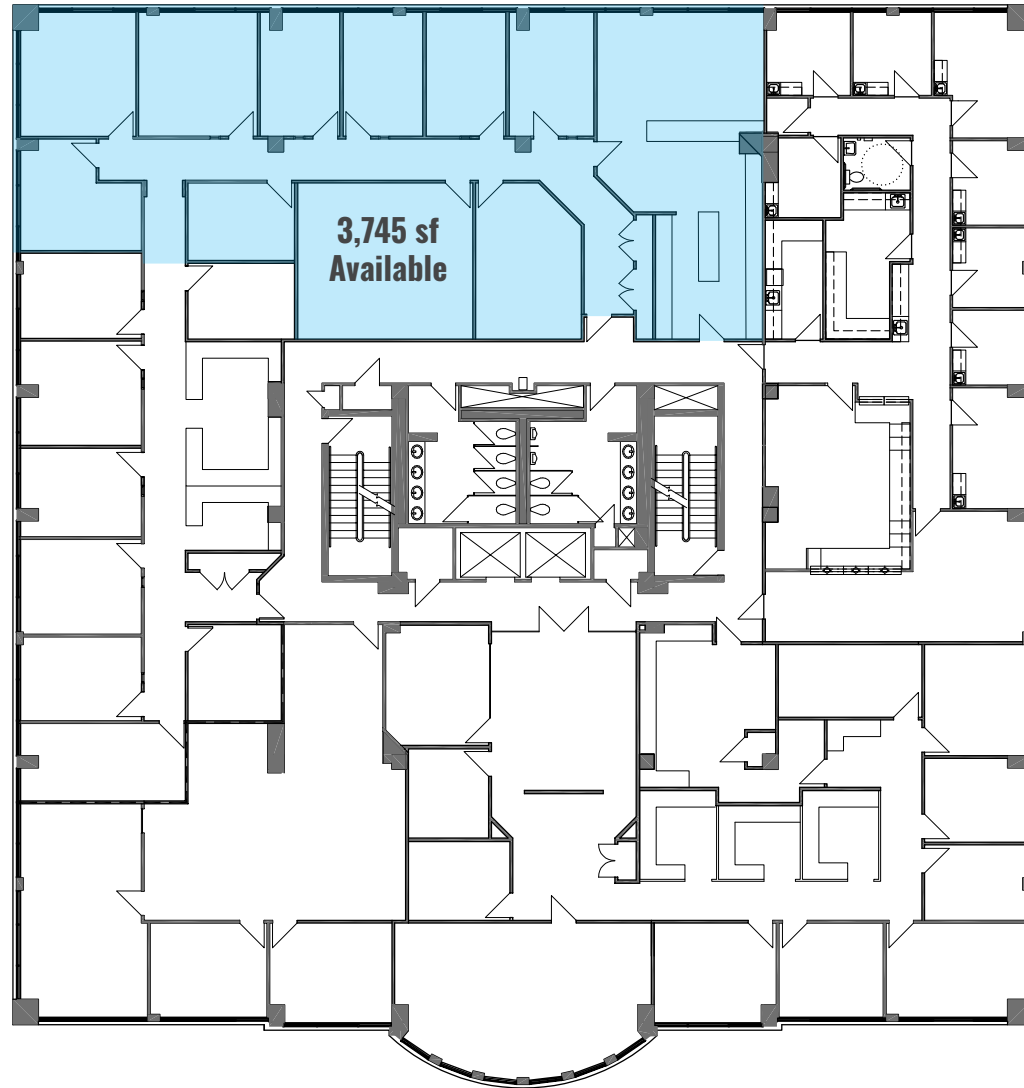
Anne Arundel County, MD

2ND FLOOR PLAN

200 HARRY S. TRUMAN PARKWAY | ANNAPOLIS, MARYLAND 21401

COVID BUILDING PROTOCOLS

- ▶ Enhanced pre-opening cleaning protocols
- ▶ Enhanced cleaning & sanitation throughout the day
- ▶ Social distancing prompts throughout the property
- ▶ Directional signage throughout the property
- ▶ Self-serve sanitizer and wipe stations
- ▶ Increased training/PPE for property staff



FOR LEASE

Anne Arundel County, MD

4TH FLOOR PLAN

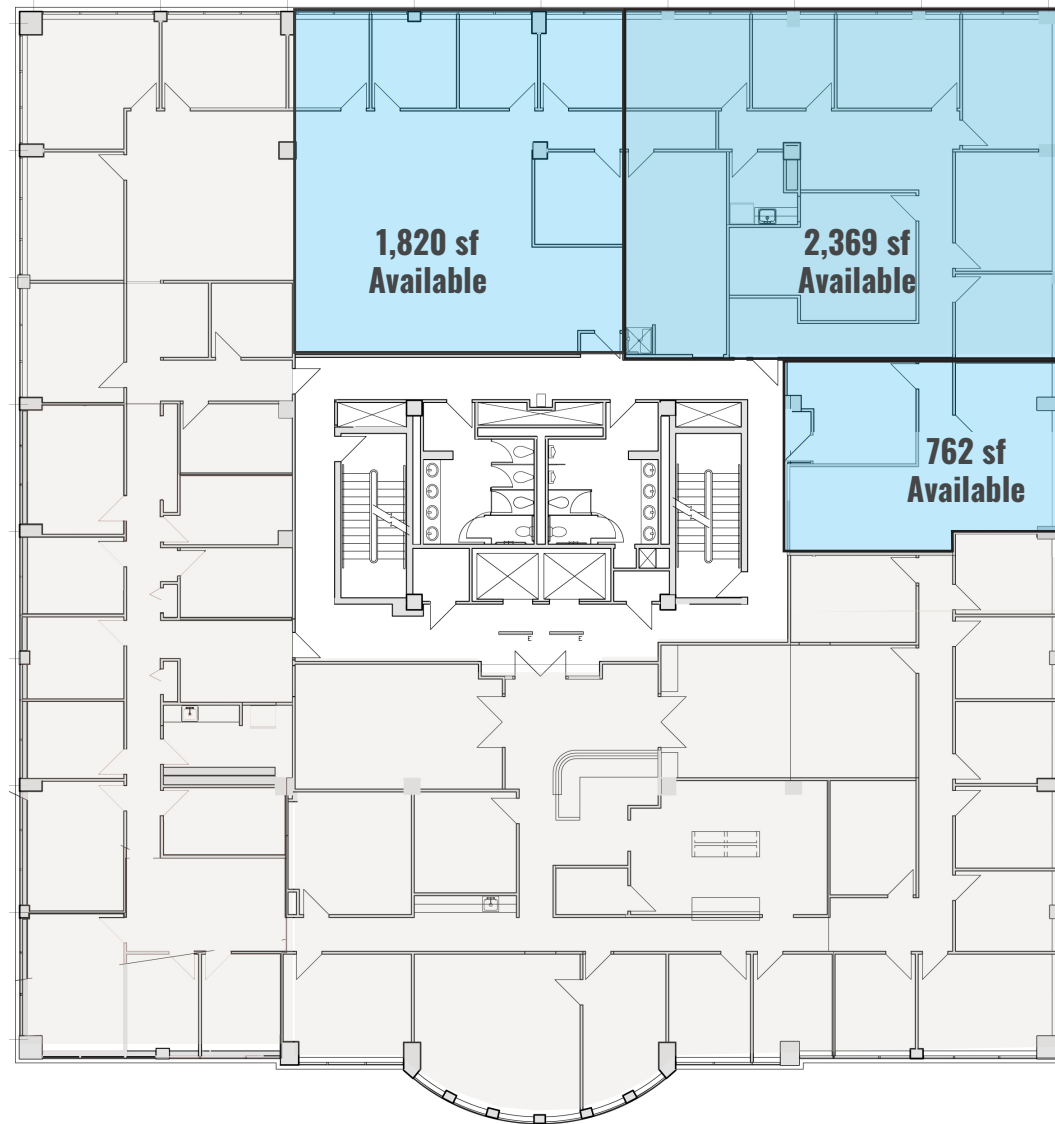
200 HARRY S. TRUMAN PARKWAY | ANNAPOLIS, MARYLAND 21401

COVID BUILDING PROTOCOLS

- ▶ Enhanced pre-opening cleaning protocols
- ▶ Enhanced cleaning & sanitation throughout the day
- ▶ Social distancing prompts throughout the property
- ▶ Directional signage throughout the property
- ▶ Self-serve sanitizer and wipe stations
- ▶ Increased training/PPE for property staff



Contiguous up to 4,951 sf



FOR LEASE

Anne Arundel County, MD

200 HARRY S. TRUMAN PARKWAY

ANNAPOLIS | MARYLAND 21401

