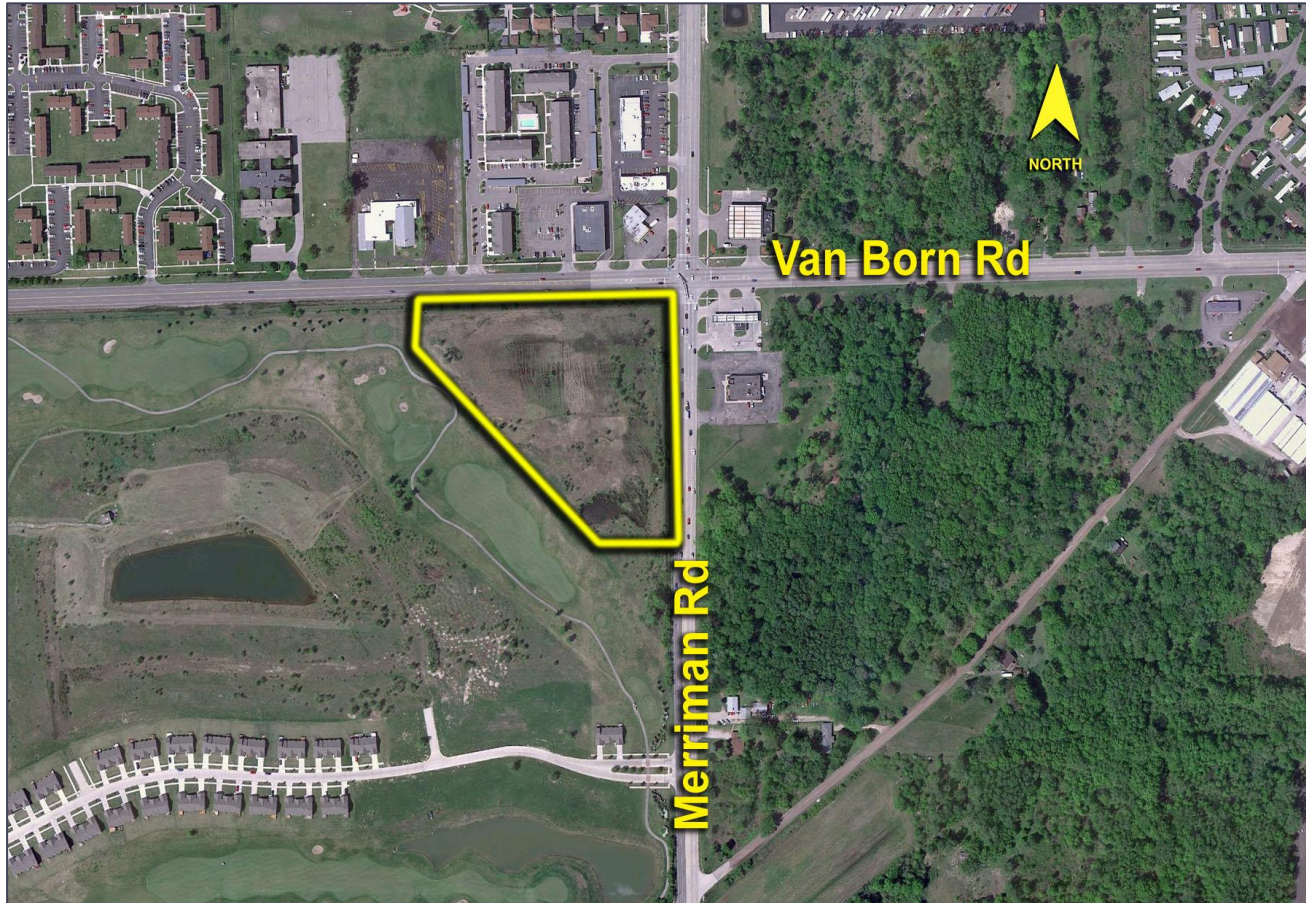


MERRIMAN ROAD ROMULUS, MICHIGAN

LAND FOR SALE
7.91 Acres Available

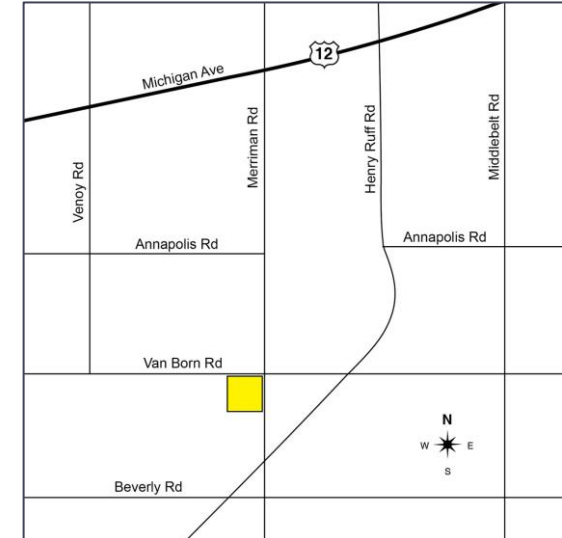


GREAT FOR ANY DEVELOPMENT



PROPERTY FEATURES

- 7.91 acres available
- R1A/PDA Zoning
- Excellent corner near golf course and new housing
- Perfect for retail, medical or any development
- Near Metro Airport
- Sale Price: \$593,250 (\$75,000/acre)



For more information, please contact:

JUSTIN GAFFREY
(248) 799 3143
jgaffrey@signatureassociates.com

PETER WALOCKO
(248) 948 0106
pwalocko@signatureassociates.com

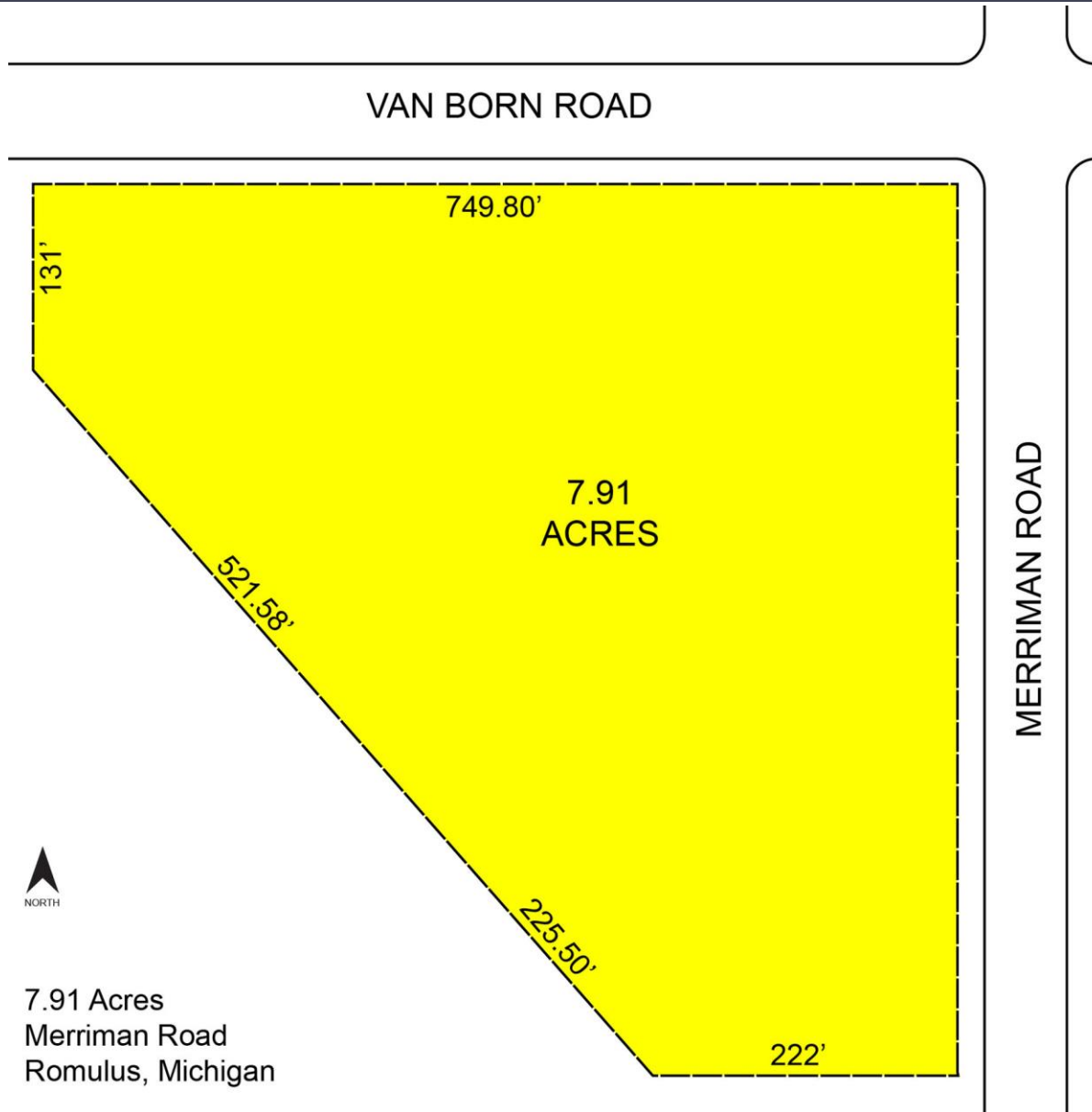
SIGNATURE ASSOCIATES
One Towne Square, Suite 1200
Southfield, MI 48076
www.signatureassociates.com

Merriman Road, Lot – Romulus, Michigan

7.91 Acres for Sale

7.91
Acres
AVAILABLE

Site Plan



For more information, please contact:

JUSTIN GAFFREY

(248) 799 3143

jgaffrey@signatureassociates.com

PETER WALOCKO

(248) 948 0106

pwalocko@signatureassociates.com

SIGNATURE ASSOCIATES

One Towne Square, Suite 1200

Southfield, MI 48076

www.signatureassociates.com