



1223 N. MILWAUKEE AVE.

CHICAGO, IL 60642



FOR RENT | RETAIL & OFFICE

RETAIL AND OFFICE SPACE AVAILABLE AT THE PRIME INTERSECTION OF ASHLAND, DIVISION, AND MILWAUKEE. GREAT VISIBILITY AND WALKING TRAFFIC PAST STOREFRONT.

- SPACE AVAILABLE** | 181 SF SECOND FLOOR OFFICES
- ANNUAL NET RENT*** | \$500 / MONTH FOR OFFICE SPACE
- CAM & TAX** | \$5.50 / SF
- POPULATION** | 230,000+ WITHIN 2 MILE
- AVERAGE HH INCOME** | \$117,000 WITHIN 2 MILE
- TRAFFIC** | 20,000+ VEHICLES PER DAY
- WALK SCORE** | 98

*Available space only.



NEARBY



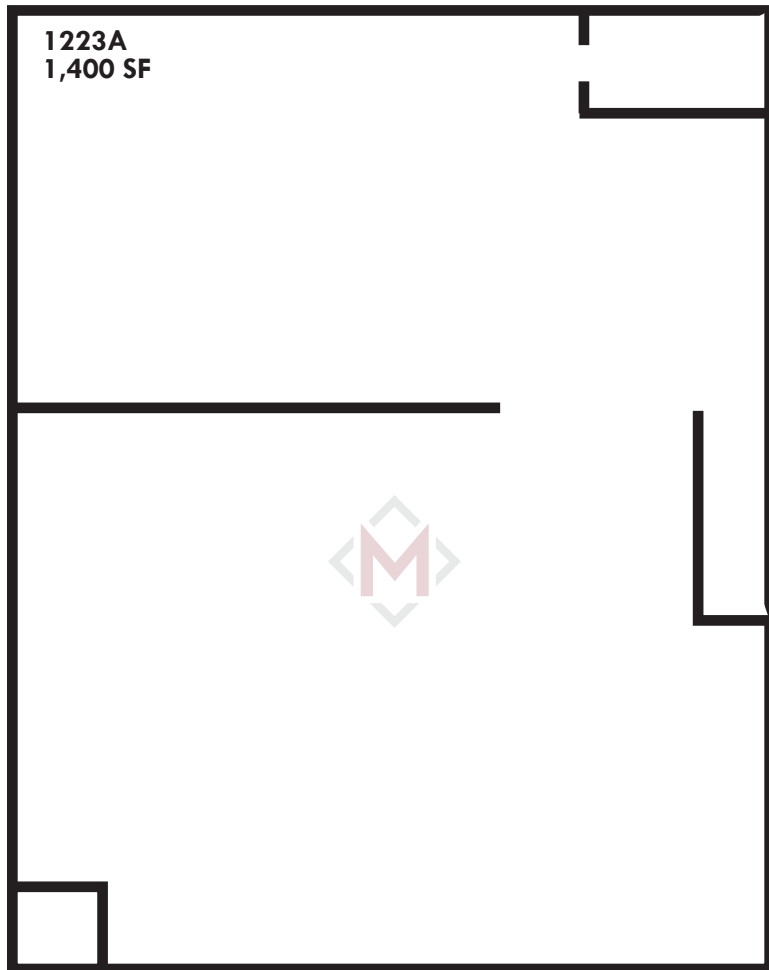
CONTACT

TERRI COX | 312-337-1001 ext. 2028 | tcox@matanky.com

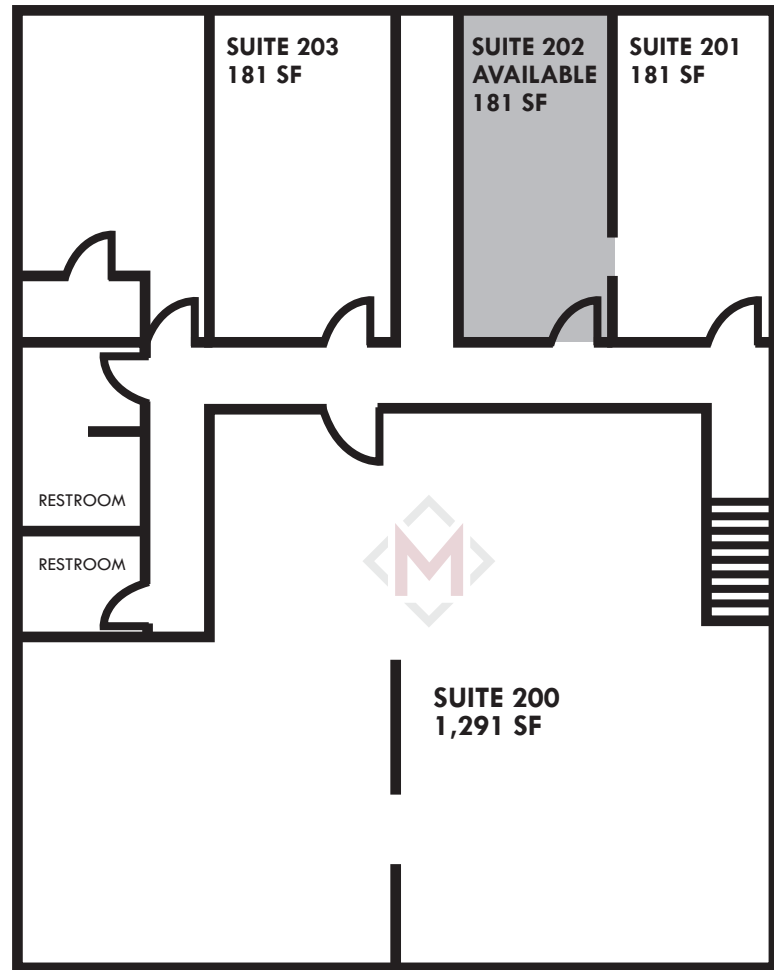
1223 N. MILWAUKEE AVE.

CHICAGO, ILLINOIS 60642

FIRST FLOOR



SECOND FLOOR



SITE PLAN

AERIAL



MAP



312-337-1001



TERRI COX

JOIN US ON:



WWW.MATANKY.COM



MATANKY REALTY GROUP