

# LINCOLN SQUARE

## LINCOLN SQUARE NORTH

10401 NE 8<sup>th</sup>

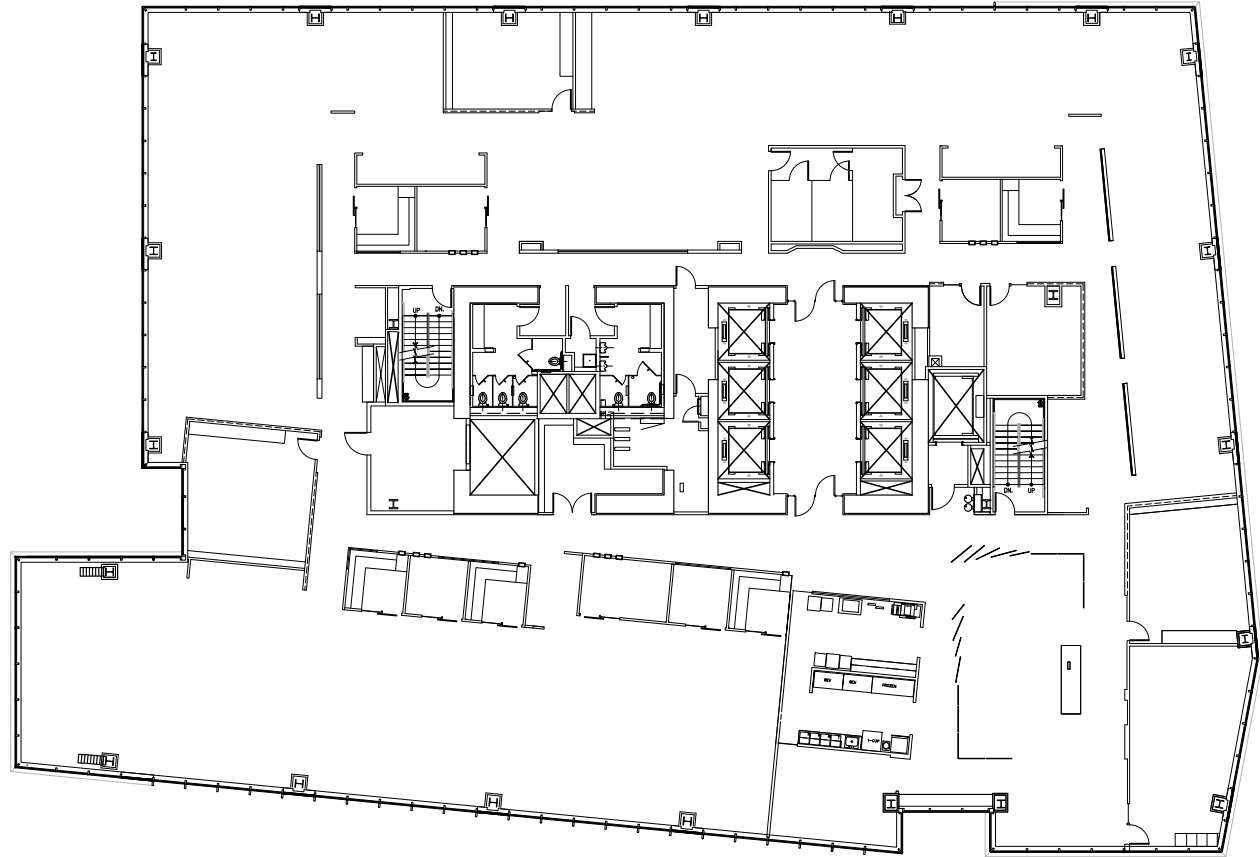
Bellevue, WA 98004

# LINCOLN SQUARE NORTH

Floor 20 • 22,375 RSF • As-Built Plan

## SPACE FEATURES

- Available with 120 days notice
- Unobstructed Lake Washington and Seattle Skyline views
- Former Microsoft floor



For more information or to schedule a tour, please contact:

**PAUL SWEENEY**

425.646.5225

sweeney@broderickgroup.com

**JIM KINERK**

425.646.5221

kinerk@broderickgroup.com

**CLAYTON HOLM**

425.274.4287

holm@broderickgroup.com



[BACK TO AVAILABILITIES](#)