



# FOR LEASE

Park 100 | Building 118  
5273-5307 Lakeview Parkway S. Drive  
Indianapolis, Indiana

W. 71st Street

Lakeview Pkwy S. Drive

11,716 SF - 2 Units

## Property Features



35,700 SF building size



4.49 acres total site size



Ample car parking



Nearby amenities



Common picnic area



## Current Availabilities

Suite 5303 - 7,539 SF [VIRTUAL TOUR](#)

Suite 5297 - 4,177 SF [VIRTUAL TOUR](#)

Owned By



Ed Beehner  
MapleTree Investments  
+1 312 761 9477  
ed.beehner@mapletree.com.sg

Leased By



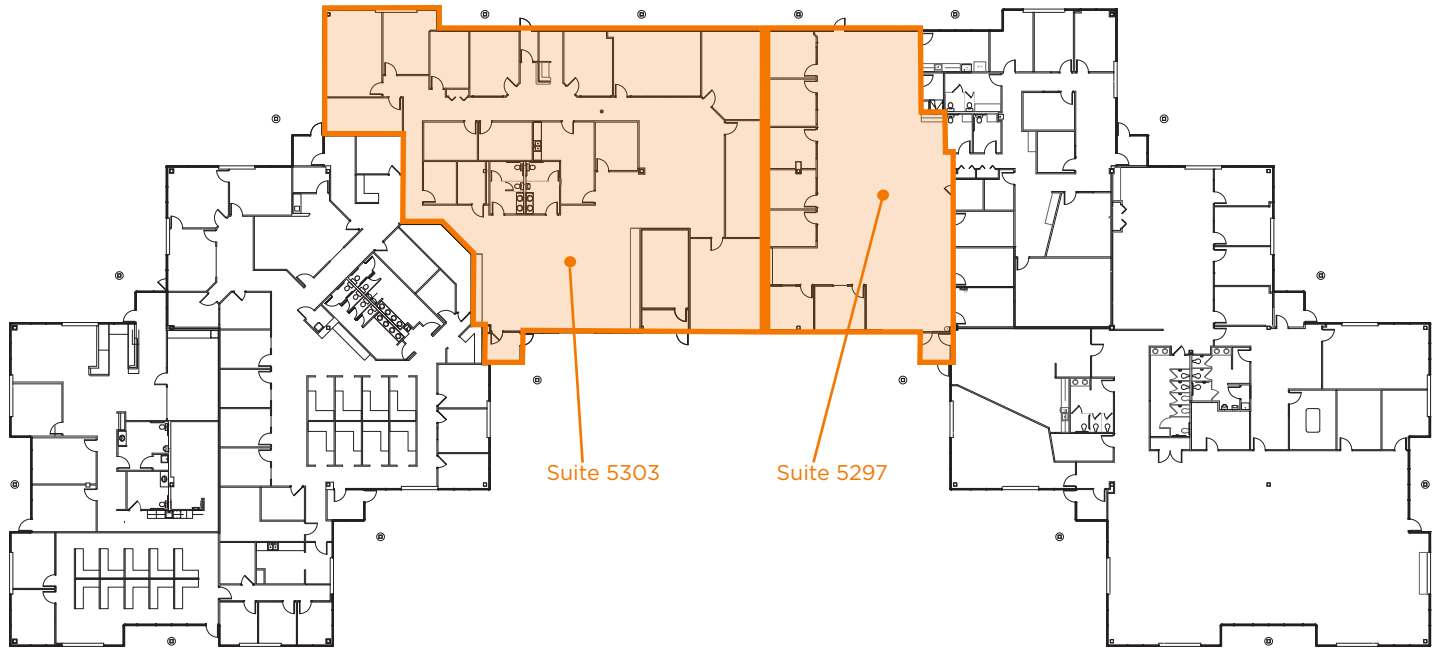
Kevin Archer  
Director  
+1 317 218 7217  
kevin.archer@cushwake.com

Joshua Graham  
Director  
+1 317 639 0491  
joshua.graham@cushwake.com

Jon R. Owens, SIOR  
Managing Director  
+1 317 639 0447  
jon.owens@cushwake.com

# 5273-5307 LAKEVIEW PARKWAY S. DRIVE

## SITE PLAN



## Current Availabilities

### Suite 5303

>>> 7,539 SF available

>>> 100% office

### Suite 5297

>>> 4,177 SF available

>>> 100% office

Owned By

**mapleiree**

Ed Beehner  
Mapletree Investments  
+1 312 761 9477  
ed.beehner@mapletree.com.sg

Leased By

 **CUSHMAN & WAKEFIELD**

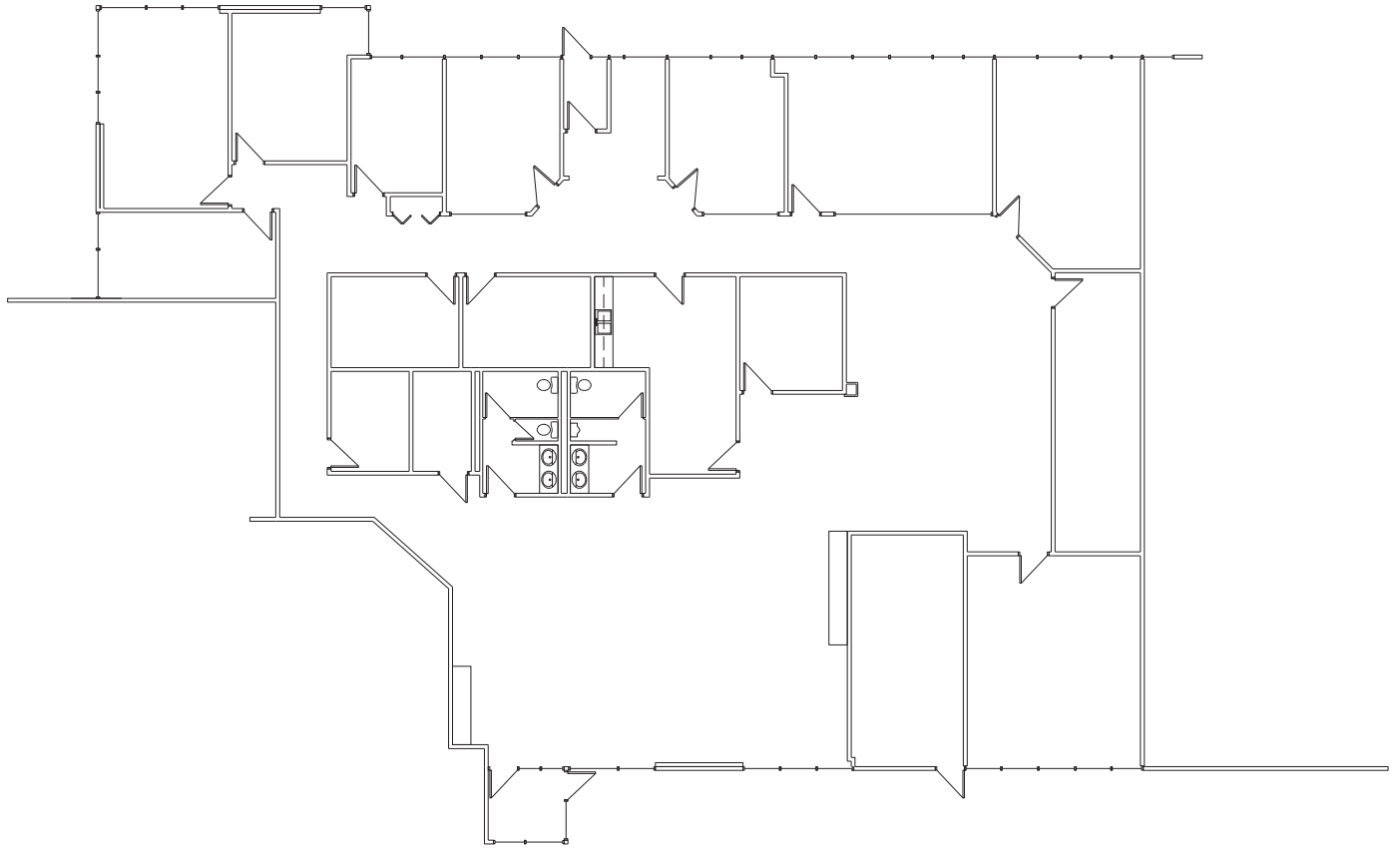
Kevin Archer  
Director  
+1 317 218 7217  
kevin.archer@cushwake.com

Joshua Graham  
Director  
+1 317 639 0491  
joshua.graham@cushwake.com

Jon R. Owens, SIOR  
Managing Director  
+1 317 639 0447  
jon.owens@cushwake.com

# 5273-5307 LAKEVIEW PARKWAY S. DRIVE

## SUITE 5303 - 7,539 SF



- >>> 7,539 SF available
- >>> 100% office available
- >>> Abundant natural light
- >>> Multiple private offices
- >>> Breakroom
- >>> Open cubicle area

Owned By

**maple**tree

Ed Beehner  
Mapletree Investments  
+1 312 761 9477  
ed.beehner@mapletree.com.sg

Leased By

 **CUSHMAN & WAKEFIELD**

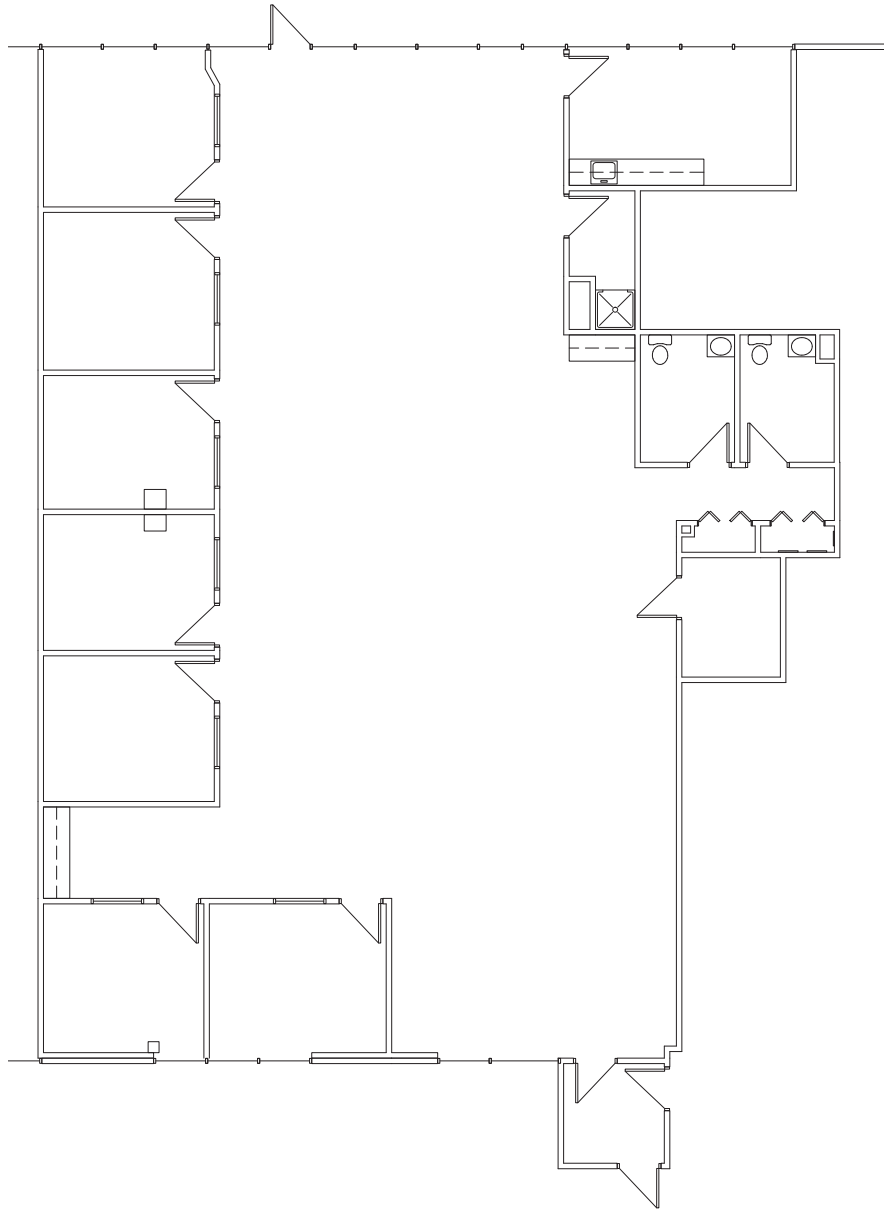
Kevin Archer  
Director  
+1 317 218 7217  
kevin.archer@cushwake.com

Joshua Graham  
Director  
+1 317 639 0491  
joshua.graham@cushwake.com

Jon R. Owens, SIOR  
Managing Director  
+1 317 639 0447  
jon.owens@cushwake.com

# 5273-5307 LAKEVIEW PARKWAY S. DRIVE

## SUITE 5297 - 4,177 SF



- >>> 4,177 SF available
- >>> 100% office available
- >>> Open cubicle area
- >>> Private offices along perimeter

Owned By

**maple<sup>tree</sup>**

Ed Beehner  
Mapletree Investments  
+1 312 761 9477  
ed.beehner@mapletree.com.sg

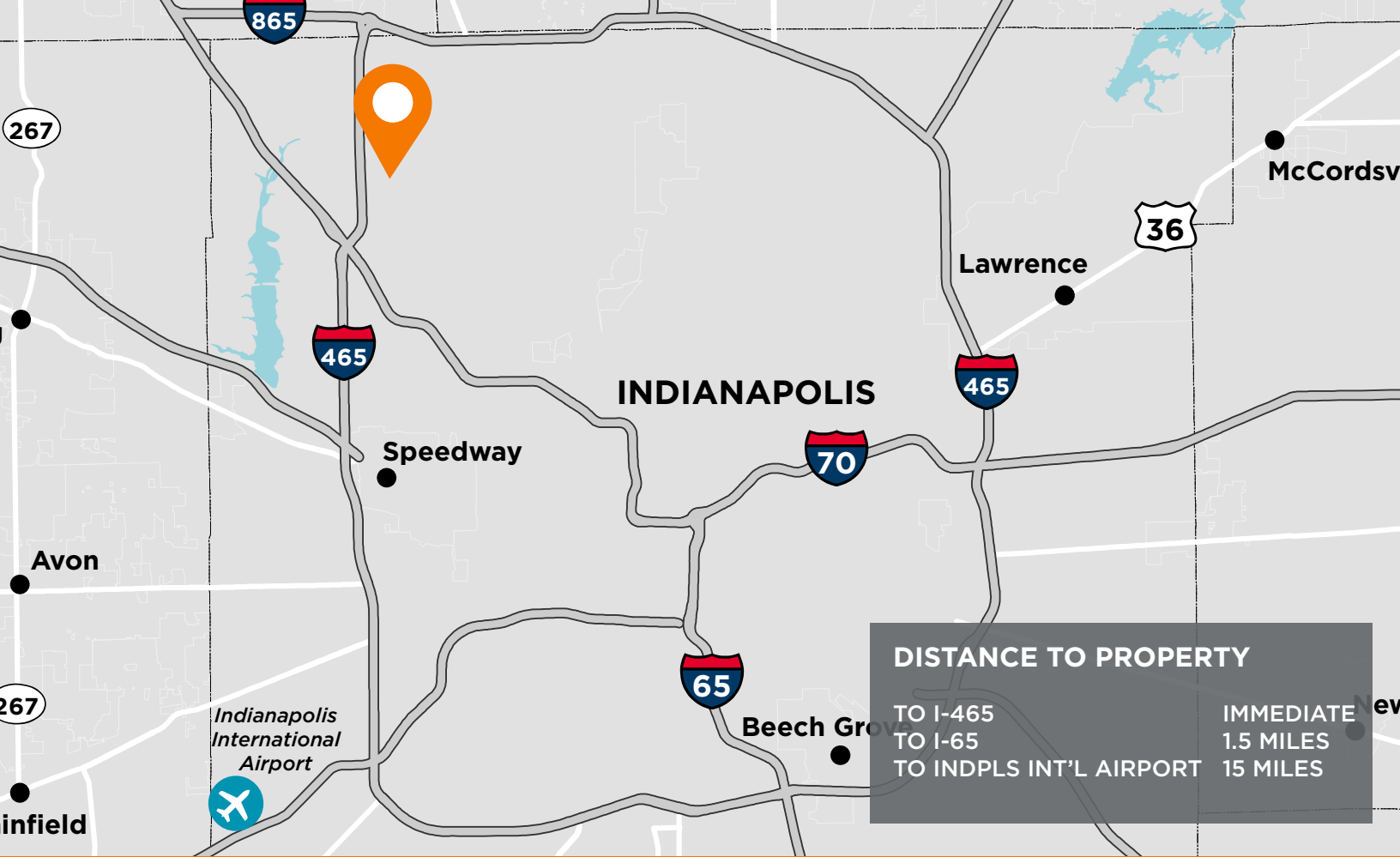
Leased By

 **CUSHMAN & WAKEFIELD**

Kevin Archer  
Director  
+1 317 218 7217  
kevin.archer@cushwake.com

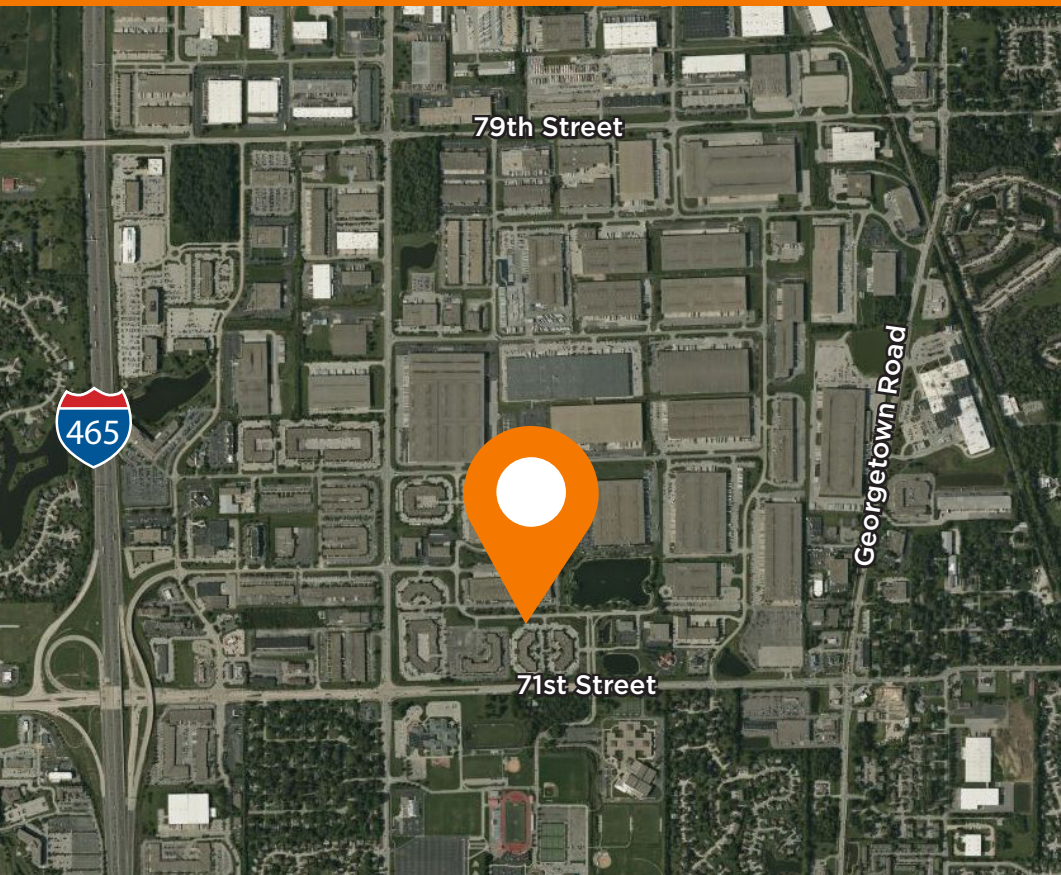
Joshua Graham  
Director  
+1 317 639 0491  
joshua.graham@cushwake.com

Jon R. Owens, SIOR  
Managing Director  
+1 317 639 0447  
jon.owens@cushwake.com



**DISTANCE TO PROPERTY**

TO I-465	IMMEDIATE
TO I-65	1.5 MILES
TO INDPLS INT'L AIRPORT	15 MILES



**Strategic Location**

Park 100 provides direct access to central Indiana's highways. Conveniently located on I-465 and minutes from I-65 and Indianapolis International Airport

**About Us**

Mapletree is a leading global real estate developer, investor and manager headquartered in Singapore. Mapletree owns and manages more than 42 million square feet of logistics and industrial properties across 26 states with offices in New York, Chicago, Atlanta, Dallas and Los Angeles.

[www.mapletree.com.sg](http://www.mapletree.com.sg)

Owned By



Ed Beehner  
Mapletree Investments  
+1 312 761 9477  
ed.beehner@mapletree.com.sg

Leased By



Kevin Archer  
Director  
+1 317 218 7217  
kevin.archer@cushwake.com

Joshua Graham  
Director  
+1 317 639 0491  
joshua.graham@cushwake.com

Jon R. Owens, SIOR  
Managing Director  
+1 317 639 0447  
jon.owens@cushwake.com