

AVAILABLE FOR LEASE - INDUSTRIAL CONDO VALLEY BUSINESS PARK

1039 Serpentine Lane, Unit B, Pleasanton



PROPERTY INFORMATION

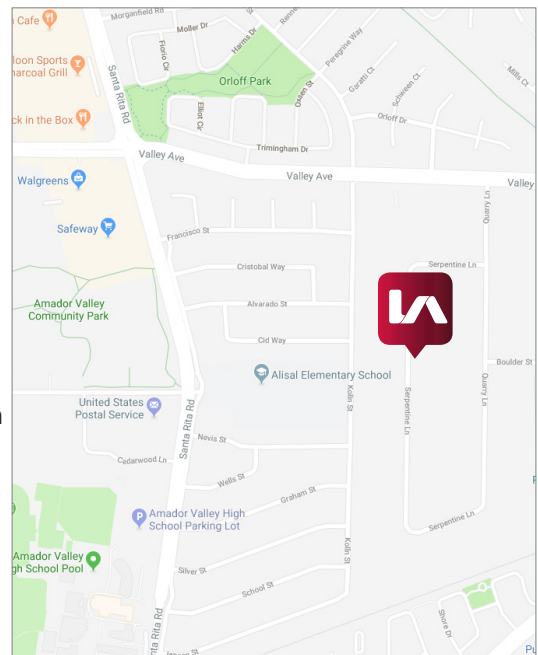
TOTAL SF: 1,854 SF
OFFICE SF: 648 SF
PROPERTY TYPE: Industrial Condominium

COMMENTS:

Light industrial condominium unit, consisting of one (1) grade level roll-up door and two (2) private offices, work area and open bullpen. Air conditioned offices & Bathroom.

ECONOMIC DATA

LEASE RATE: \$1.70/Industrial Gross

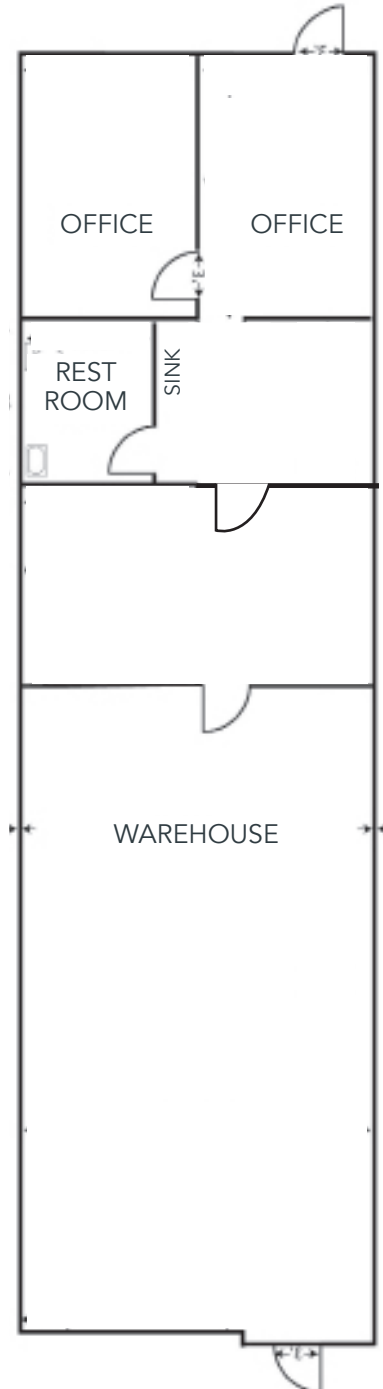


Simon Vogt
Principal | Lic.ID#01879314
svogt@lee-associates.com
D 925.737.4157

All information furnished regarding property for sale, rental or financing is from sources deemed reliable, but no warranty or representation is made to the accuracy thereof and same is submitted to errors, omissions, change of price, rental or other conditions prior to sale, lease or financing or withdrawal without notice. No liability of any kind is to be imposed on the broker herein.

AVAILABLE FOR LEASE - INDUSTRIAL CONDO VALLEY BUSINESS PARK

1039 Serpentine Lane, Unit B, Pleasanton



Simon Vogt
Principal | Lic.ID#01879314
svogt@lee-associates.com
D 925.737.4157

All information furnished regarding property for sale, rental or financing is from sources deemed reliable, but no warranty or representation is made to the accuracy thereof and same is submitted to errors, omissions, change of price, rental or other conditions prior to sale, lease or financing or withdrawal without notice. No liability of any kind is to be imposed on the broker herein.