

AVAILABILITIES

CLICK SUITE/FLOOR ROW TO VIEW FLOOR PLAN

8521 FALLBROOK	
Suite 150	7,297 RSF
Suite 220	1,402 RSF
Suite 320	10,197 RSF
\$2.40/RSF	

8511 FALLBROOK	
1st Floor	2,890 - 12,276 RSF
Suite 450	6,219 RSF
\$2.55/RSF	

8501 FALLBROOK	
Suite 150	17,715 RSF
Suite 230	13,812 RSF
3rd floor	75,349 RSF
\$2.40/RSF	

8407 FALLBROOK	
Suite 110	8,035 RSF
Suite 140	17,023 RSF
\$2.30/RSF	

8413 FALLBROOK	
1st Floor (storage space)	6,265 RSF
\$2.15/RSF	



© 2019 CBRE, Inc. All rights reserved. This information has been obtained from sources believed reliable, but has not been verified for accuracy or completeness. You should conduct a careful, independent investigation of the property and verify all information. Any reliance on this information is solely at your own risk. CBRE and the CBRE logo are service marks of CBRE, Inc. All other marks displayed on this document are the property of their respective owners, and the use of such logos does not imply any affiliation with or endorsement of CBRE. Photos herein are the property of their respective owners. Use of these images without the express written consent of the owner is prohibited.

8521 FALLBROOK

[« Back to Availabilities Summary](#)

SUITE 150



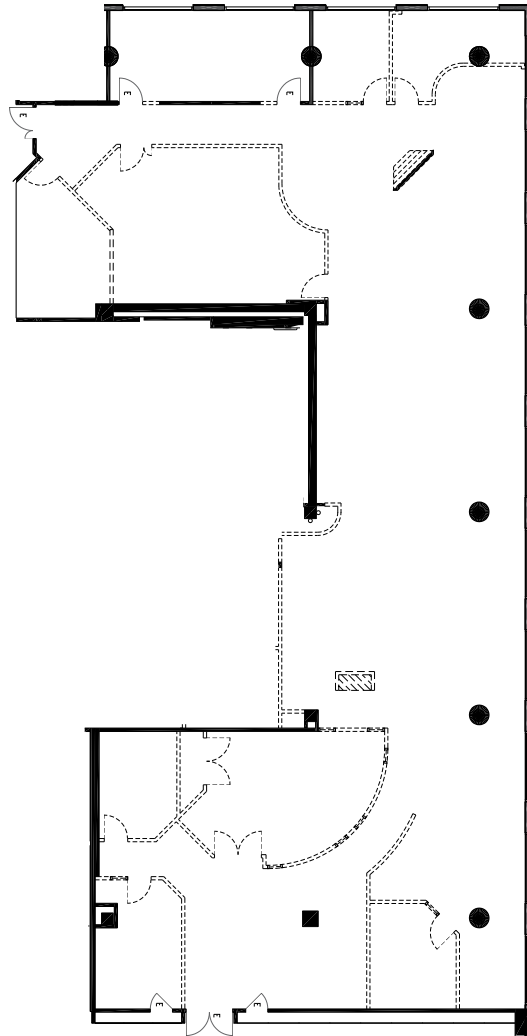
SIZE:
7,297 RSF

TOTAL BUILDING SF:
166,237 RSF

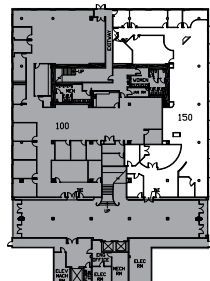
ASKING RATE:
\$2.40 PSF

FIBER CONNECTIVITY PROVIDERS:
AT&T and Verizon FIOS

PARKING RATIO:
5/1000



AS-BUILT PLAN



8521 FALLBROOK

[« Back to Availabilities Summary](#)

SUITE 220



SIZE:

1,402 RSF

TOTAL BUILDING SF:

166,237 RSF

ASKING RATE:

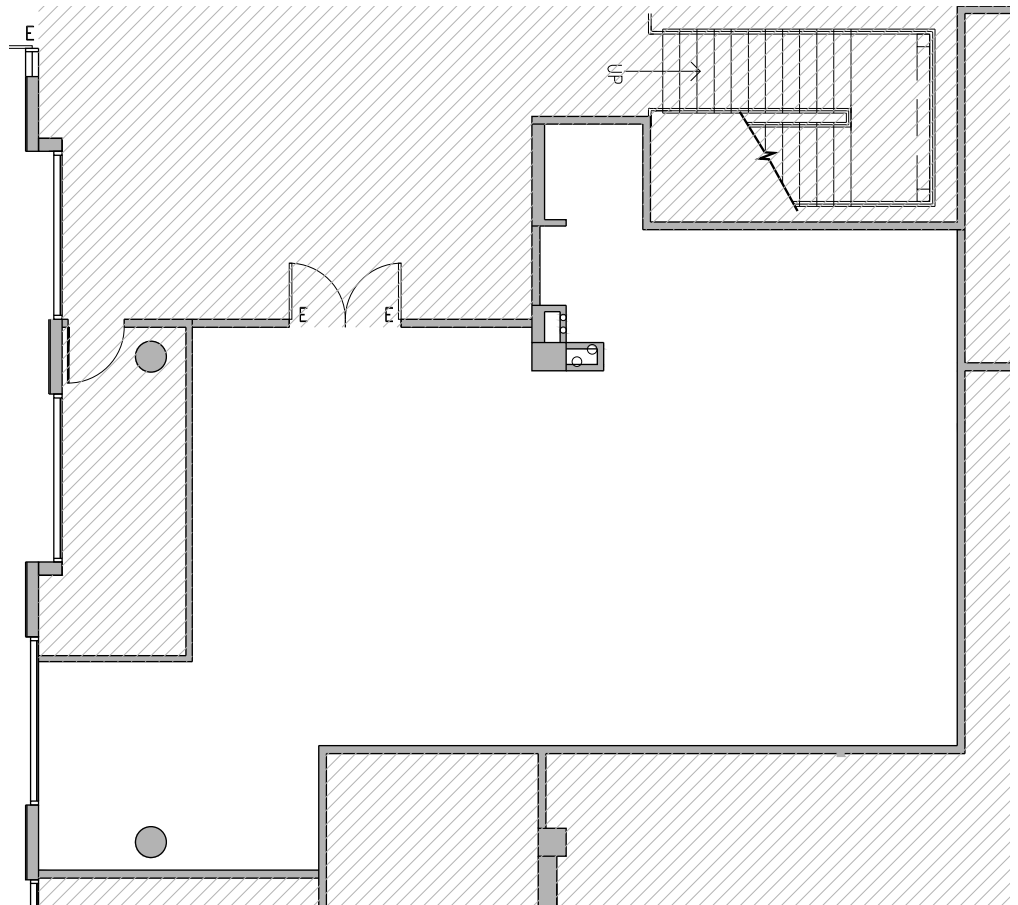
\$2.40 PSF

FIBER CONNECTIVITY PROVIDERS:

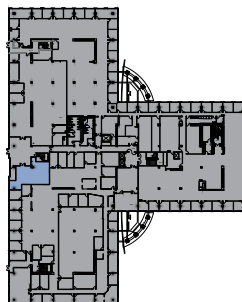
AT&T and Verizon FIOS

PARKING RATIO:

5/1000



AS-BUILT PLAN



**8521
FALLBROOK**

[« Back to Availabilities Summary](#)

SUITE 320



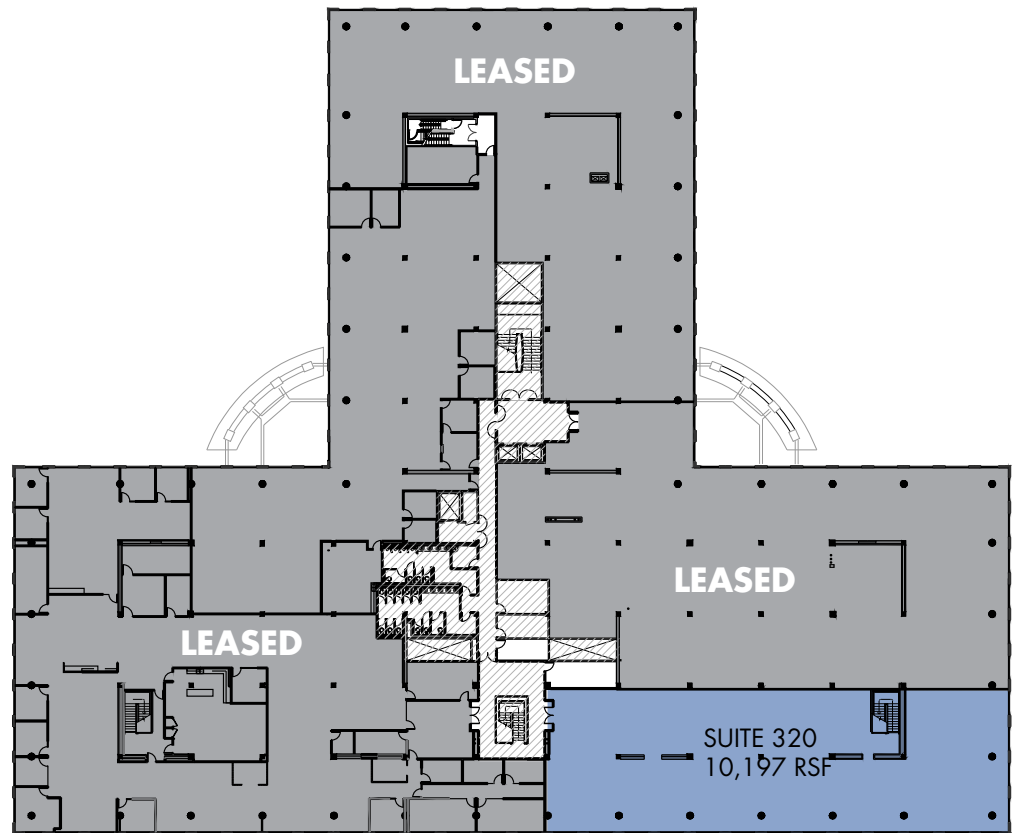
SIZE:
10,197 RSF

TOTAL BUILDING SF:
166,237 RSF

ASKING RATE:
\$2.40 PSF

FIBER CONNECTIVITY PROVIDERS:
AT&T and Verizon FIOS

PARKING RATIO:
5/1000



AS-BUILT PLAN



« Back to Availabilities Summary

8511 FALLBROOK

1ST FLOOR



SIZE:
2,890 - 12,276 RSF

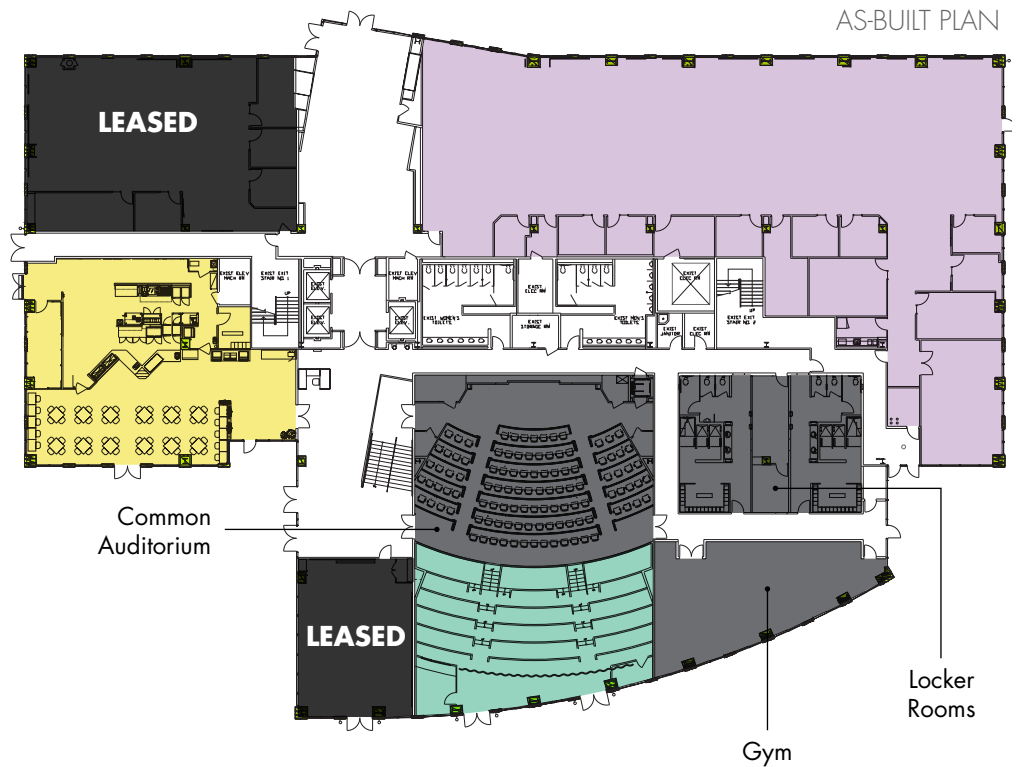
TOTAL BUILDING SF:
138,734 RSF

ASKING RATE:
\$2.55 PSF

FIBER CONNECTIVITY PROVIDERS:
AT&T and Verizon FIOS

PARKING RATIO:
5/1000

- 4,004 RSF
- 12,276 RSF
- 2,890 RSF (Storage)



© 2019 CBRE, Inc. All rights reserved. This information has been obtained from sources believed reliable, but has not been verified for accuracy or completeness. You should conduct a careful, independent investigation of the property and verify all information. Any reliance on this information is solely at your own risk. CBRE and the CBRE logo are service marks of CBRE, Inc. All other marks displayed on this document are the property of their respective owners, and the use of such logos does not imply any affiliation with or endorsement of CBRE. Photos herein are the property of their respective owners. Use of these images without the express written consent of the owner is prohibited.

**8511
FALLBROOK**

[« Back to Availabilities Summary](#)

SUITE 450



SIZE:

6,219 RSF

TOTAL BUILDING SF:

138,734 RSF

ASKING RATE:

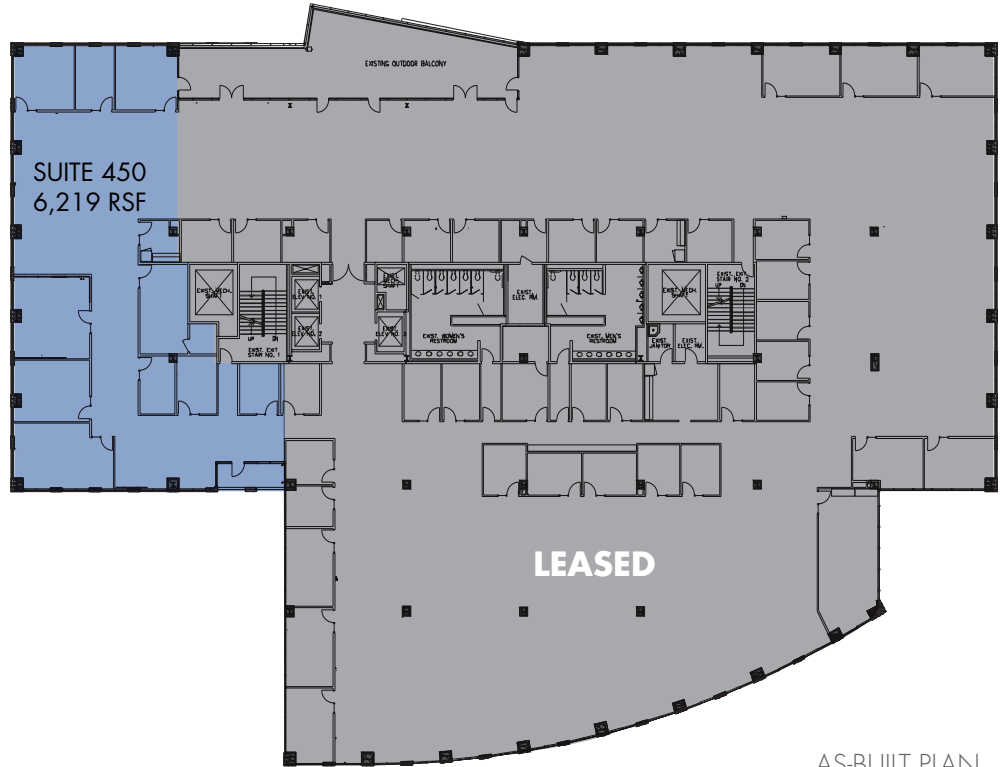
\$2.55 PSF

FIBER CONNECTIVITY PROVIDERS:

AT&T and Verizon FIOS

PARKING RATIO:

5/1000



AS-BUILT PLAN



**8501
FALLBROOK**

[« Back to Availabilities Summary](#)

SUITE 150



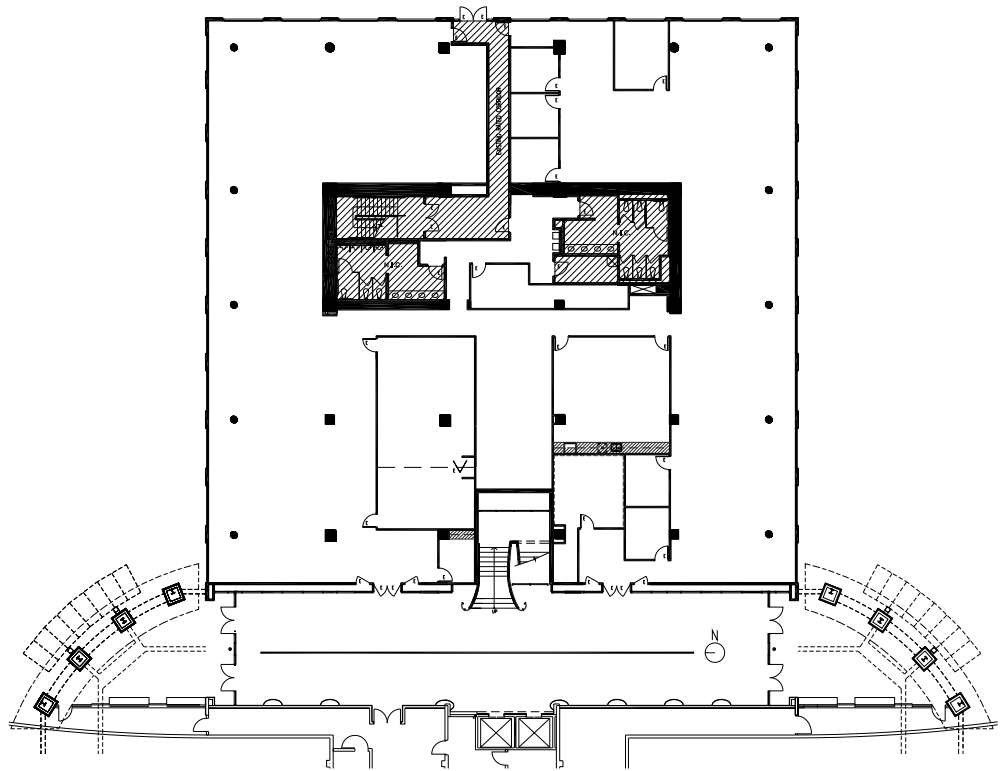
SIZE:
17,715 RSF

TOTAL BUILDING SF:
167,154 RSF

ASKING RATE:
\$2.40 PSF

FIBER CONNECTIVITY PROVIDERS:
AT&T and Verizon FIOS

PARKING RATIO:
5/1000



AS-BUILT PLAN



© 2019 CBRE, Inc. All rights reserved. This information has been obtained from sources believed reliable, but has not been verified for accuracy or completeness. You should conduct a careful, independent investigation of the property and verify all information. Any reliance on this information is solely at your own risk. CBRE and the CBRE logo are service marks of CBRE, Inc. All other marks displayed on this document are the property of their respective owners, and the use of such logos does not imply any affiliation with or endorsement of CBRE. Photos herein are the property of their respective owners. Use of these images without the express written consent of the owner is prohibited.

[« Back to Availabilities Summary](#)

8501 FALLBROOK

SUITE 230



SIZE:

13,812 RSF

TOTAL BUILDING SF:

167,154 RSF

ASKING RATE:

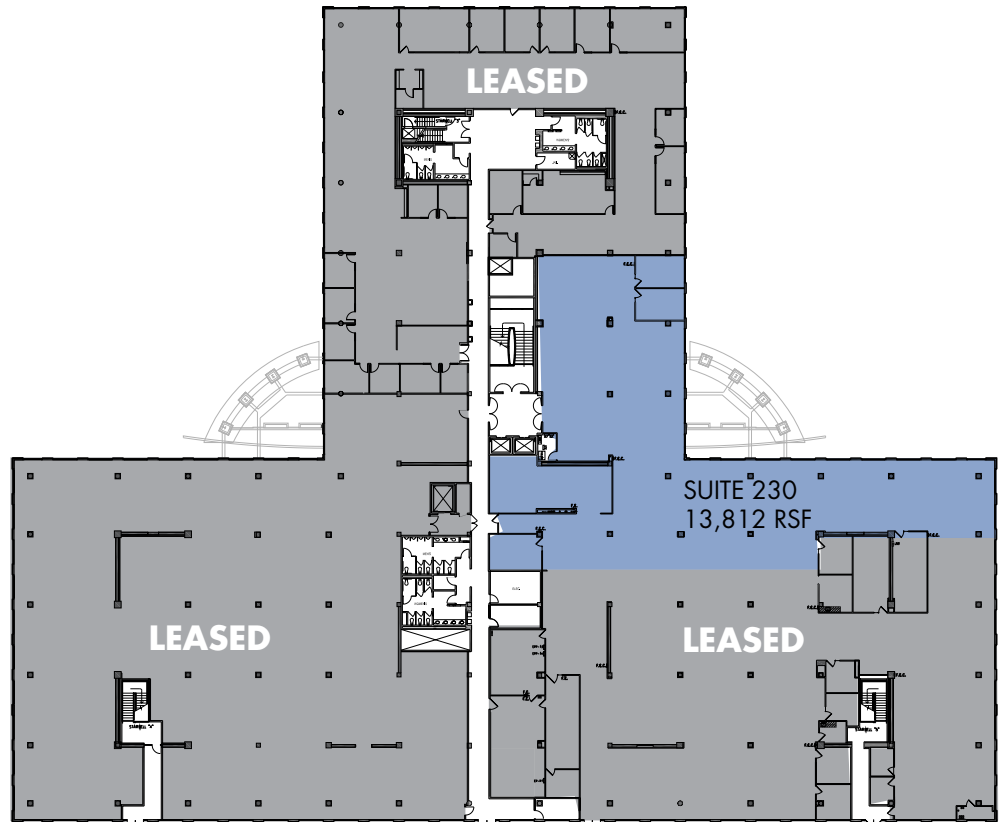
\$2.40 PSF

FIBER CONNECTIVITY PROVIDERS:

AT&T and Verizon FIOS

PARKING RATIO:

5/1000



8501 FALLBROOK

[« Back to Availabilities Summary](#)

3RD FLOOR



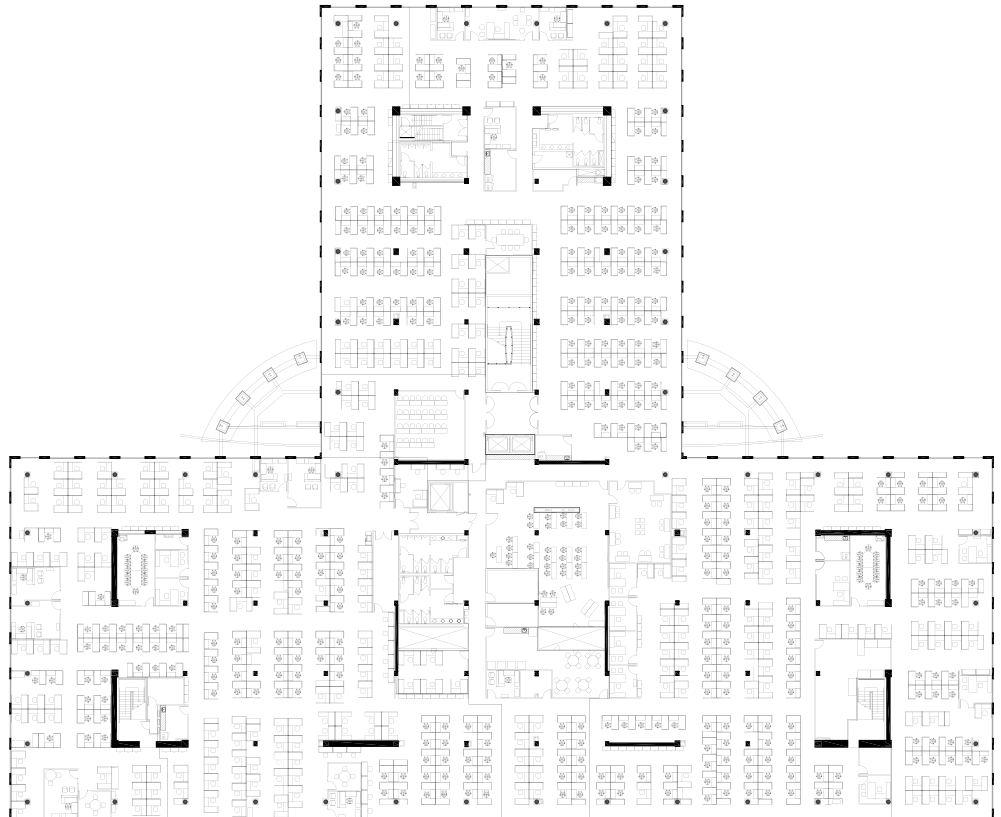
SIZE:
75,349 RSF

TOTAL BUILDING SF:
167,154 RSF

ASKING RATE:
\$2.40 PSF

FIBER CONNECTIVITY PROVIDERS:
AT&T and Verizon FIOS

PARKING RATIO:
5/1000



[« Back to Availabilities Summary](#)

8407 FALLBROOK

SUITE 110



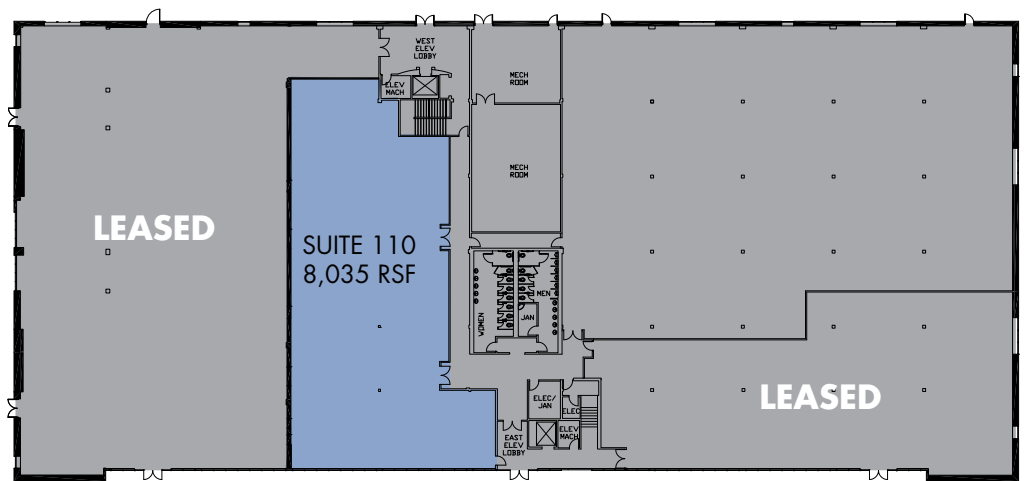
SIZE:
8,035 RSF

TOTAL BUILDING SF:
86,229 RSF

ASKING RATE:
\$2.30 PSF

FIBER CONNECTIVITY PROVIDERS:
AT&T and Verizon FIOS

PARKING RATIO:
5/1000



[« Back to Availabilities Summary](#)

8407 FALLBROOK

SUITE 140



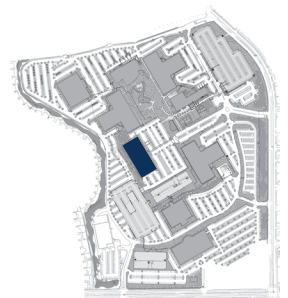
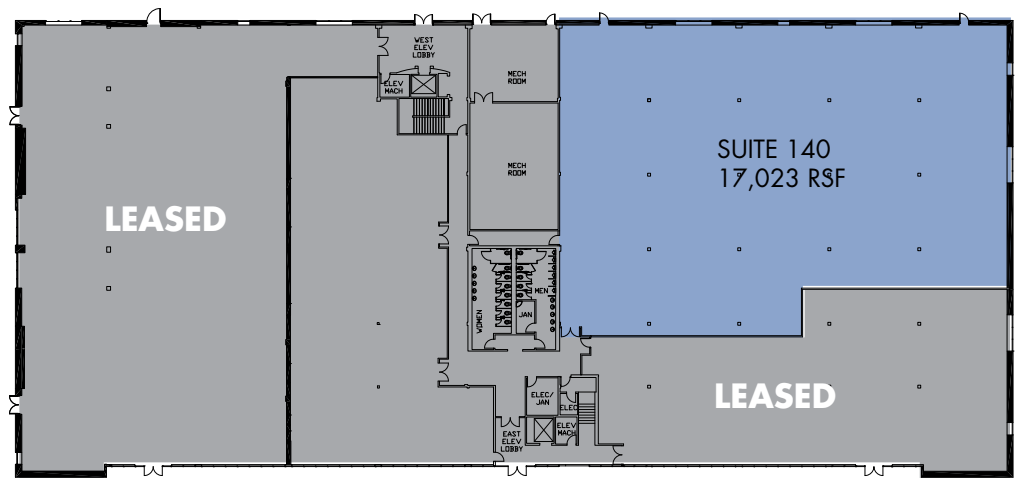
SIZE:
17,023 RSF

TOTAL BUILDING SF:
86,229 RSF

ASKING RATE:
\$2.30 PSF

FIBER CONNECTIVITY PROVIDERS:
AT&T and Verizon FIOS

PARKING RATIO:
5/1000



© 2019 CBRE, Inc. All rights reserved. This information has been obtained from sources believed reliable, but has not been verified for accuracy or completeness. You should conduct a careful, independent investigation of the property and verify all information. Any reliance on this information is solely at your own risk. CBRE and the CBRE logo are service marks of CBRE, Inc. All other marks displayed on this document are the property of their respective owners, and the use of such logos does not imply any affiliation with or endorsement of CBRE. Photos herein are the property of their respective owners. Use of these images without the express written consent of the owner is prohibited.

[« Back to Availabilities Summary](#)

8413 FALLBROOK

1ST FLOOR



SIZE:

6,265 RSF (storage space)

TOTAL BUILDING SF:

31,823 RSF

ASKING RATE:

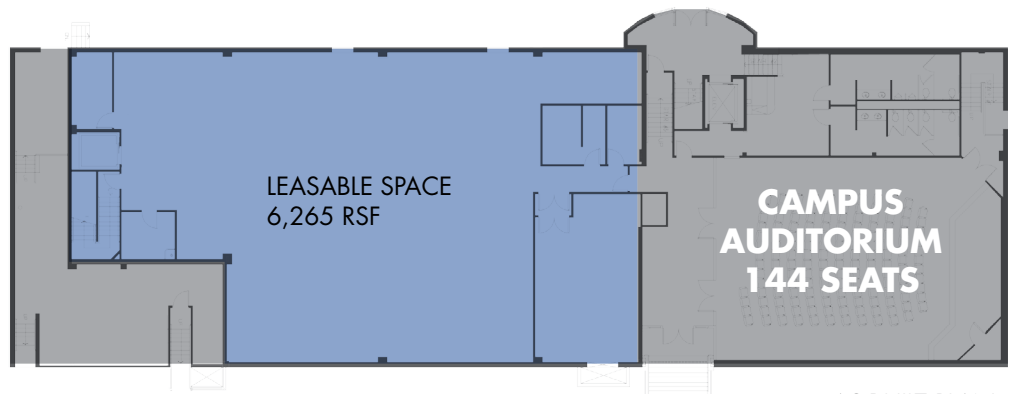
\$2.15 PSF

FIBER CONNECTIVITY PROVIDERS:

AT&T and Verizon FIOS

PARKING RATIO:

5/1000



AS-BUILT PLAN

