

SOUTH OF MARKET

642 HARRISON

SAN FRANCISCO, CALIFORNIA

SOUTH OF MARKET

642 HARRISON

SAN FRANCISCO, CALIFORNIA

T TRANSWESTERN®

101 2nd Street
Suite 300
San Francisco, CA 94105

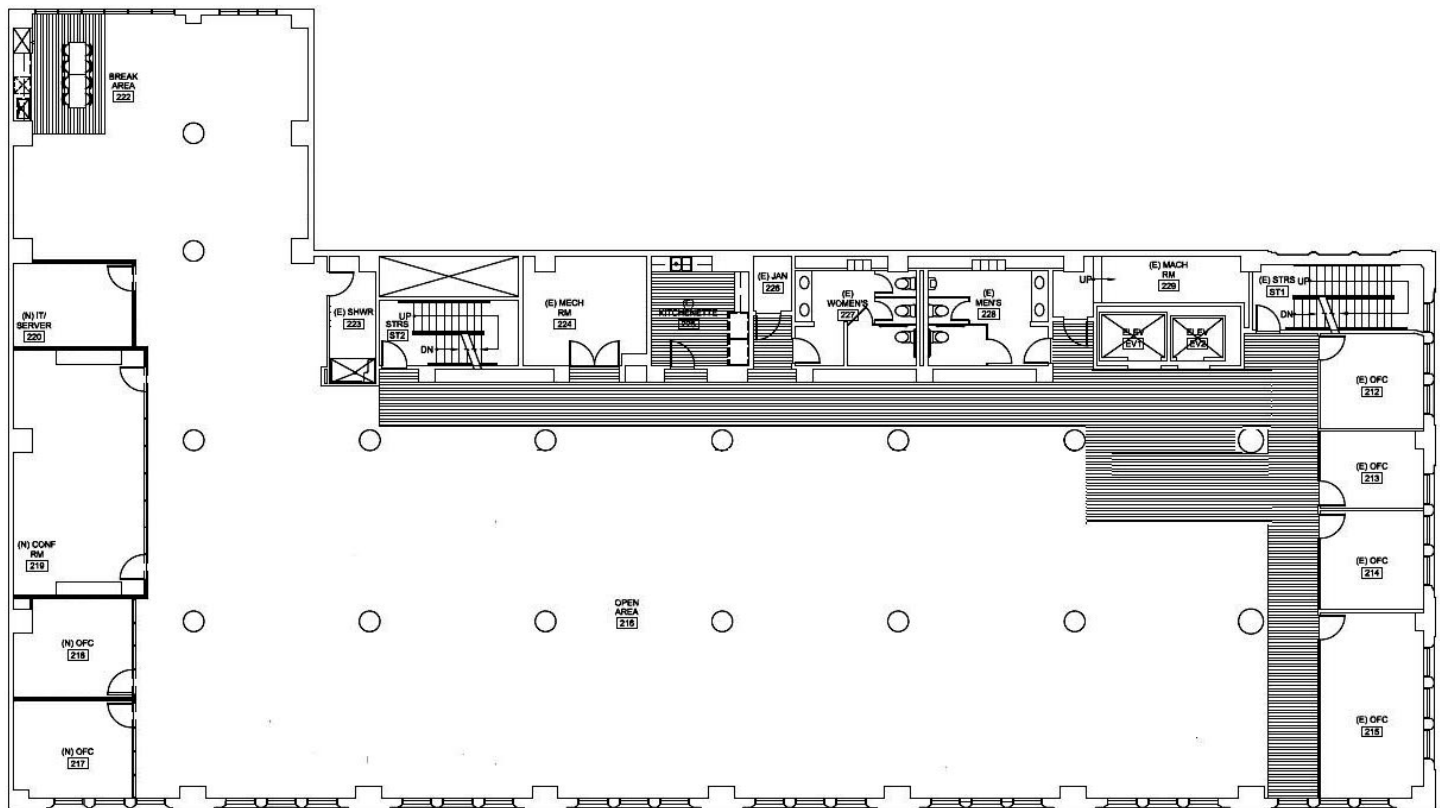
SUITE 200: 12,877 SF

BUILDING HIGHLIGHTS

- High ceilings abundant natural light
- On-site Parking
- Bike Parking
- Walking distance to BART/MUNI Station
- One block to Moscone Center
- Two blocks to South Park

SECOND FLOOR SUITE HIGHLIGHTS

- Suite 200
- 7 Conference Rooms/Private Offices
- Large open Kitchen
- Shower
- Available 3/1/2020
- Asking Rate: Low \$80's IG



Harrison Street

CONTACT

MIKE MCCARTHY

LIC# 00929942

mike.mccarthy@transwestern.com

415.489.1756

BRIAN MCCARTHY

LIC# 01840990

brian.mccarthy@transwestern.com

415.489.1753

MADDIE MEYERSIECK

LIC# 01961652

maddie.meyersieck@transwestern.com

415.489.1757

